

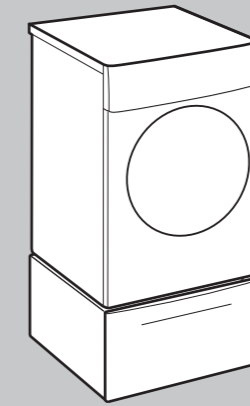
## **i** Note for use

- The maximum load capacity is 15 kg.
- Keep the drawer close while the appliance is running.
- The pedestal must be installed at the fixed position, all feet must be firmly on the floor, And do not move around.

## **?** Faults and what to do about them

Faults	Cause/Remedy
Excessive noise, vibration and "wandering" while the appliance is running.	Appliance aligned? Align the appliance. Appliance feet fixed? Secure appliance feet. → "Installation(for washer and washer dryer)"-step 8 "Installation(for dryer)"-step 4
The drawer slide in and out difficulty	Check the slide for obstructions or foreign matter.

Robert Bosch Hausgeräte GmbH  
Carl-Wery-Straße 34  
81739 München, GERMANY



## Pedestal

WMZ20530GW WMZ20530SW WMZ20530WW  
WMZ20540WW WMZ20540GW

You have chosen a Bosch pedestal.  
Please take a few minutes to read and become familiar with your pedestal.  
For more information on our products, accessories, replacement parts and services,  
see our website [www.bosch-home.com](http://www.bosch-home.com) or contact our after-sales centres.  
Read this instruction before using the pedestal.

## Contents

• Intended use .....	1
• Environmental protection .....	2
• Safety instructions .....	2
• Standard accessories .....	2
• Installation(for washer and washer dryer) .....	3
• Installation(for dryer) .....	4
• Note for use .....	5
• Faults and what to do about them .....	5

## **S** Intended use

- For private domestic use only.
- The pedestal can store your laundry, detergents, and care products, and other laundry supplies.
- The pedestal may be operated by person who have limited physical, sensory or mental abilities and by persons who have inadequate experience or knowledge, provide they are supervised or have been instructed by a responsible person.

- Keep children away from the pedestal.
  - Keep pets away from the pedestal.
- Before using the pedestal:** Read the instruction and all other information enclosed with the pedestal, and use the pedestal accordingly.  
Retain documents for subsequent use.

## Environmental protection

### Packaging/Old pedestal

Please deal with the waste pedestal according to the local rule.  
Dispose of packaging in an environmentally friendly manner.  
Keep packaging out of the reach of children, the packaging is not a toy.

Reprocessing and recycling can save the raw material, and reduce waste.  
All packaging material accorded with the environment quality requirement, and recyclable.

## Safety instructions

### Safety for children

- Danger of death!  
Children may lock themselves in pedestal, putting their lives at risk.
- Do not leave children unattended near the pedestal.
- Do not let children play with the pedestal.
- Risk of choking  
Children may become wrapped in packaging film or packing parts if allowed to play with them, or they may pull them over their heads and suffocate.
- Keep packing, film and packaging parts out of the reach of children.

### Risk of poisoning

Detergents and care products may be poisonous if consumed.  
Keep detergents and care products out of the reach of children.  
Eye/skin irritation detergents and care products may cause irritation if they come into contact with eyes or skin..

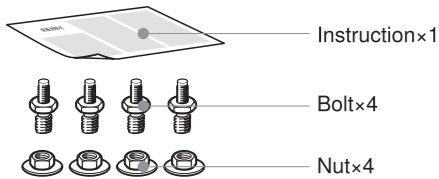
### Risk of injury

If you climb onto the pedestal, the housing may break and cause injuries.  
Do not climb onto the pedestal.

A single pedestal only connect to one appliance.

After the pedestal connected with the appliance, if you lean/support yourself on the appliance, the appliance may overturn and cause injuries.  
Do not lean on the appliance.

## Standard accessories (for washer and washer dryer)

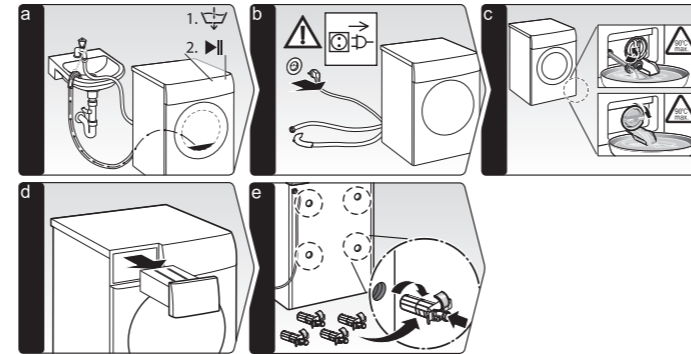


**Note:**  
Check the pedestal for transport damage. Never use a damaged pedestal. If you have any complaints, contact the dealer from whom you purchased the pedestal or our customer services.

**Note:**  
If you buy the pedestal for your dryer, we have a specially designed connecting fittings for dryer, please contact with our after-sales service centres and tell us you need it.

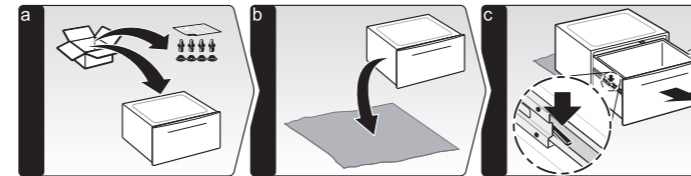
## Installation (for washer and washer dryer)

1.\*

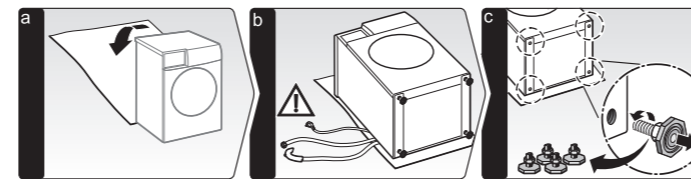


\* If you buy a new washer/washer dryer with pedestal, please pull off the drawer of washer/washer dryer first, and then starting the installation from step 2.

2.

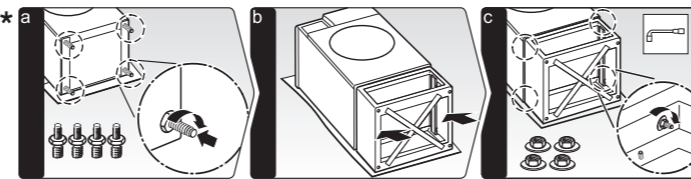


3.\*\*



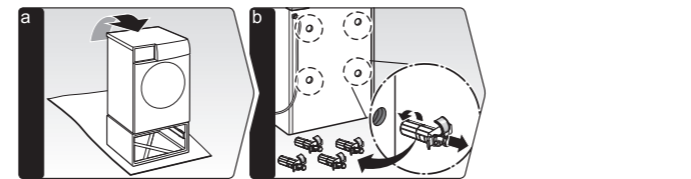
\*\* Remove the 4 feet of the washer/washer dryer and keep them in a safe place before pedestal installation.

4.\*\*\*

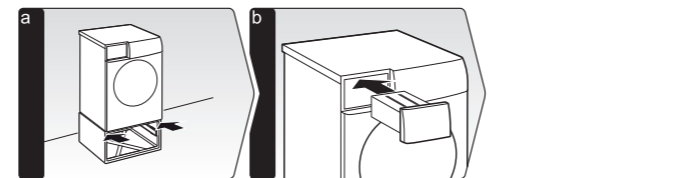


\*\*\* **Note:**  
4-a Get the bolt tight with hand, and then use a tool locks to tighten it about 90 degrees.  
4-c Get the nut tight with a tool  
**Warning!**  
When installing the nut, avoid contacting the screw for fear of scuffing.

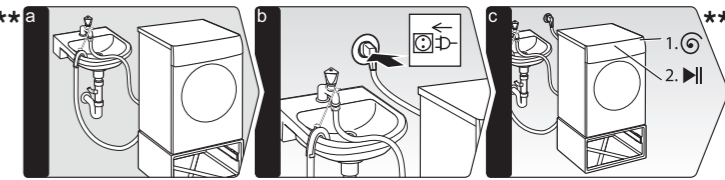
5.



6.

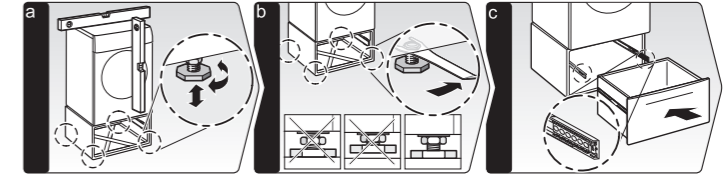


7.\*\*\*\*



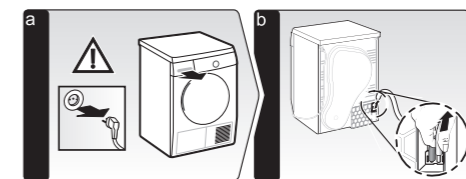
\*\*\*\* Reconnect the water supply hose, drain hose and power cord, run the single spin programme with a wet towel to check the stability of installation.

8.



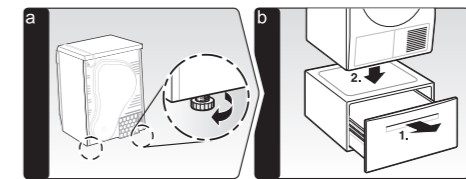
## Installation (for dryer, and use the specially designed connecting fittings for dryer)

1.\*

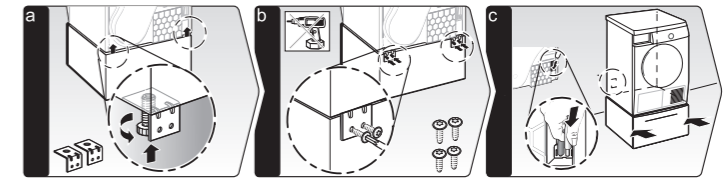


\* If you buy a new dryer with pedestal, please pull off the condensation container of dryer first, and then starting the installation from step 2.

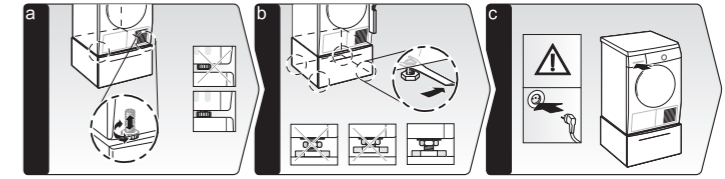
2.



3.



4.



## Free Manuals Download Website

<http://myh66.com>

<http://usermanuals.us>

<http://www.somanuals.com>

<http://www.4manuals.cc>

<http://www.manual-lib.com>

<http://www.404manual.com>

<http://www.luxmanual.com>

<http://aubethermostatmanual.com>

Golf course search by state

<http://golfingnear.com>

Email search by domain

<http://emailbydomain.com>

Auto manuals search

<http://auto.somanuals.com>

TV manuals search

<http://tv.somanuals.com>