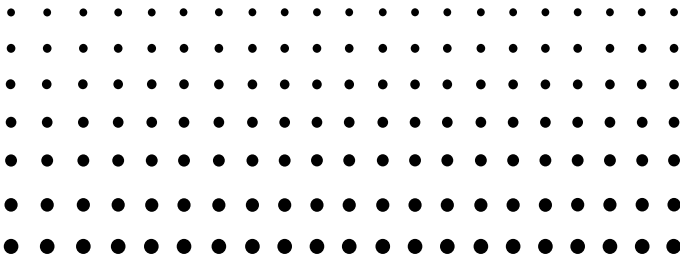


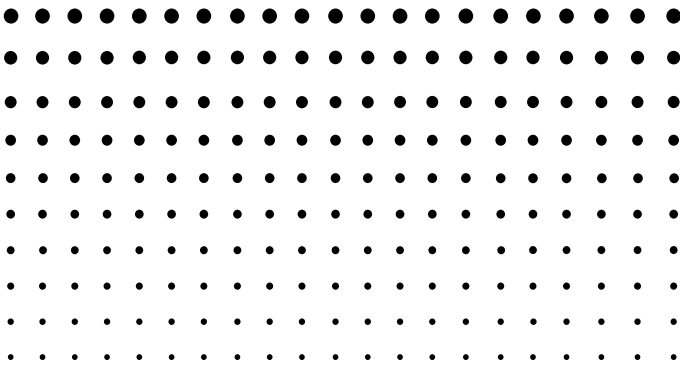
For fx-9860G Slim

E



# *fx-9860G Slim Manager PLUS*

## *User's Guide*



CASIO Worldwide Education Website

<http://edu.casio.com>

CASIO EDUCATIONAL FORUM

<http://edu.casio.com/forum/>

**CASIO**®

**Note**

Screen shots shown in this User's Guide are intended for illustrative purposes only. The actual text and values that appear on display may differ from the examples shown in this User's Guide.

# Getting Started

- fx-9860G Slim Manager PLUS is an emulator that lets you perform fx-9860G Slim operations on your computer.
- You can record key operations you perform on the emulator as “Key-Log records”, and edit Key-Log records as required.
- The keys on the Key-Log editor screen as well as the emulator LCD screen contents can be pasted into other applications. This means that emulator data can be used to create assignments, tests, and other materials.
- A presentation feature lets you play back saved Key-Log records.
- You can connect your fx-9860G Slim unit to your computer and display its contents on your computer screen.

## ***Important!***

- Be sure to install the fx-9860G Slim Manager PLUS before you connect fx-9860G Slim to your computer. Connecting before you install the fx-9860G Slim Manager PLUS can result in improper operation.

## **■ Using This Manual**

- This manual covers the software included on the fx-9860G Slim Manager PLUS CD-ROM. For details about operation of the fx-9860G Slim Graphing Calculator, see the user documentation that comes with the calculator.
- The procedures in this manual assume that you are already familiar with the following standard computer operations.
  - Menu operations using the mouse, including: clicking, double-clicking, dragging, etc.
  - Text input using the keyboard
  - Icon operations, general window operations, etc.
  - If you are not familiar with these types of operations, refer to the user documentation for your computer.
- The screen shots shown in this manual are all from the English version of Windows® XP.
- Note that the actual appearance of the screen that appears when using this software depends on your computer system setup and on the operating system you are using.

# Contents

<b>1. Installing and Uninstalling fx-9860G Slim Manager PLUS .....</b>	<b>E-3</b>
<b>2. Screen Configuration .....</b>	<b>E-8</b>
Menu Bar .....	E-9
Toolbar .....	E-14
Status Bar .....	E-15
<b>3. Emulator Mode and Key-Log Editor Mode .....</b>	<b>E-16</b>
<b>4. Emulating fx-9860G Slim Calculator Operation .....</b>	<b>E-17</b>
<b>5. Using the Emulator Key-Log .....</b>	<b>E-23</b>
<b>6. Configuring Options Dialog Box Setting .....</b>	<b>E-28</b>
<b>7. Other Functions .....</b>	<b>E-29</b>
Printing .....	E-29
Shortcut Menu .....	E-31
<b>8. File Types Supported by fx-9860G Slim Manager PLUS .....</b>	<b>E-32</b>
<b>9. Differences between fx-9860G Slim Calculator and fx-9860G Slim     Manager PLUS Functions .....</b>	<b>E-33</b>
<b>10. Using Screen Receiver to Display the Calculator Screen Image on     Your Computer .....</b>	<b>E-39</b>
<b>11. Error Message Table .....</b>	<b>E-44</b>

# 1. Installing and Uninstalling fx-9860G Slim Manager PLUS

This section explains how to install and uninstall fx-9860G Slim Manager PLUS.

## To install fx-9860G Slim Manager PLUS

1. Place the CD-ROM into your computer's CD-ROM drive.
  - After a short while, the CASIO Manager PLUS for fx-9860G Series screen will appear on the display.



The following describes what each item on this screen does.

fx-9860G Slim Manager PLUS ... Installs fx-9860G Slim Manager PLUS.

fx-9860G Manager PLUS ... Installs fx-9860G Manager PLUS.

GRAPH85 Manager PLUS ... Installs GRAPH85 Manager PLUS.

Add-In Application ... Displays the Add-In application screen, which shows folders that contain

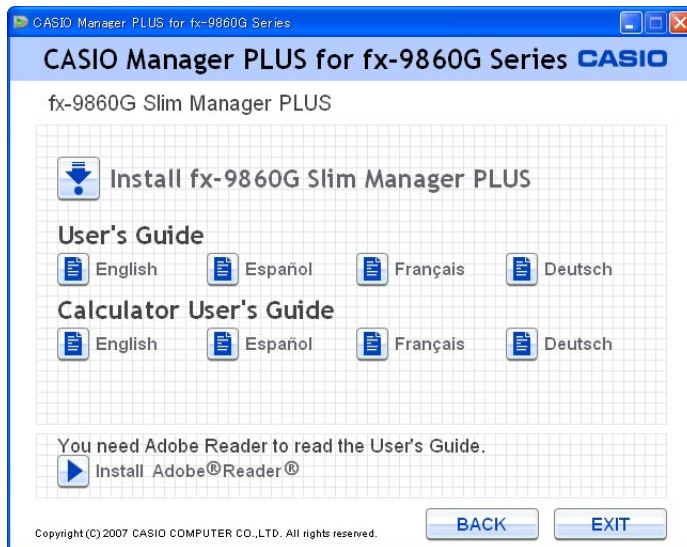
Add-In applications and provides access to Add-In application documentation.

CASIO Web Site ... Goes to the website at <http://edu.casio.com>

Open folder to view files ... Opens a folder on the CD-ROM.

Français ... Displays the screens in steps 1 and 2 in French.

2. Click “fx-9860G Slim Manager PLUS”.
- This displays the screen shown below.



The following describes what each item on this screen does.

Install fx-9860G Slim Manager PLUS ... Starts installation of fx-9860G Slim Manager PLUS.

User's Guide ... Click a language to open the corresponding user's guide.

Calculator User's Guide ... Click a language to open the corresponding calculator user's guide.

Install Adobe® Reader® ... Installs Adobe® Reader®.

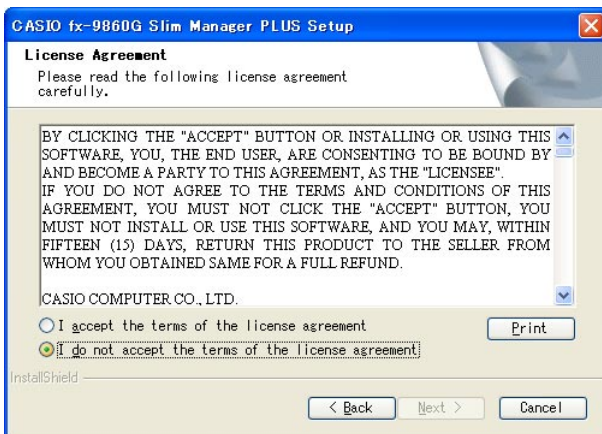
3. Click “Install fx-9860G Slim Manager PLUS”.

- This displays a language selection menu.



- The option you select here specifies the language of the screen text that appears during installation. The screen text language of the fx-9860G Slim Manager PLUS application itself is English, regardless of what you select here.
- The setting you select here will determine the language version for installation of the fx-9860G Slim and fx-9860G Slim Manager PLUS manuals.

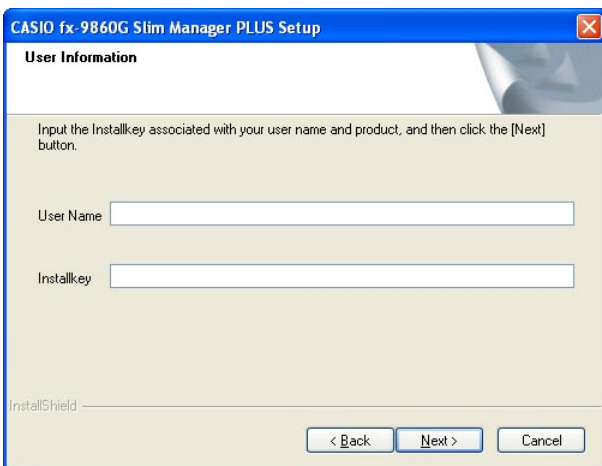
4. Select a language and then click the [OK] button to advance to the next screen.
- If the [Next] button appears, click it.
  - This displays the end user license agreement (EULA).
  - The EULA will appear in the language you selected in step 3, except if you selected Spanish. The EULA appears in English when Spanish is selected in step 3.



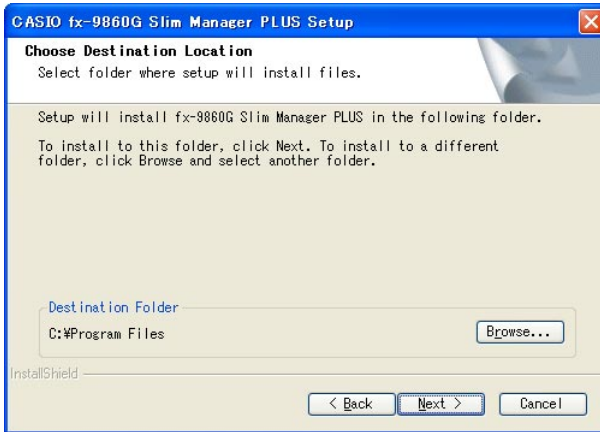
5. Carefully read the EULA.

6. If you agree to be bound by the terms and conditions of the EULA, choose "I accept the terms...", and then click [Next]. This will display the user registration screen.

- If you do not want to agree, choose "I do not accept the terms ..." and then click [Cancel] to exit the installation operation.



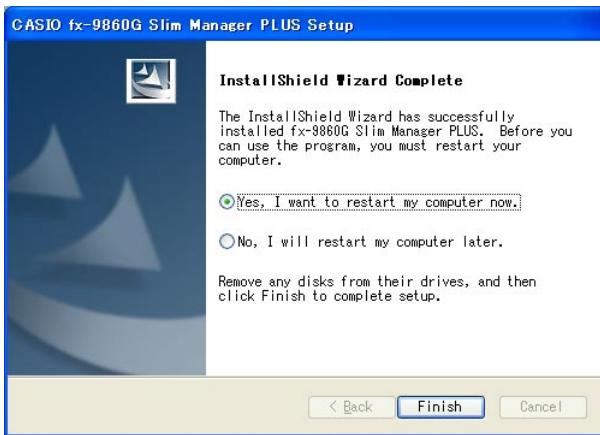
7. Input the appropriate information in the following boxes and then click [Next].  
User Name ... Input your name.  
Installkey ... Input the Install Key sticker number on the software package.



8. Perform either of the two following steps to specify the installation drive and folder.

- **To use the default settings**  
Simply click the [Next] button.
- **To specify a different folder**  
Click the [Browse...] button. Select the folder you want and then click [Next].

9. Click the [Next] button to start the installation.



10. When a message appears telling you that installation is complete, click the [Finish] button.

- This completes installation and will restart your computer automatically.

**Note**

- Installing the software will put a “9860SlimManager+” shortcut icon on your Windows desktop.

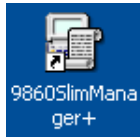


## To uninstall fx-9860G Slim Manager PLUS

1. Display the Windows Control Panel.
2. Click [Add/Remove Program].
3. On the list of applications that appears, select “fx-9860G Slim Manager PLUS”.
4. Click the [Add/Remove] button.
  - This will display the program maintenance wizard.
5. Click the [Yes] button.
  - This completes the uninstall operation.

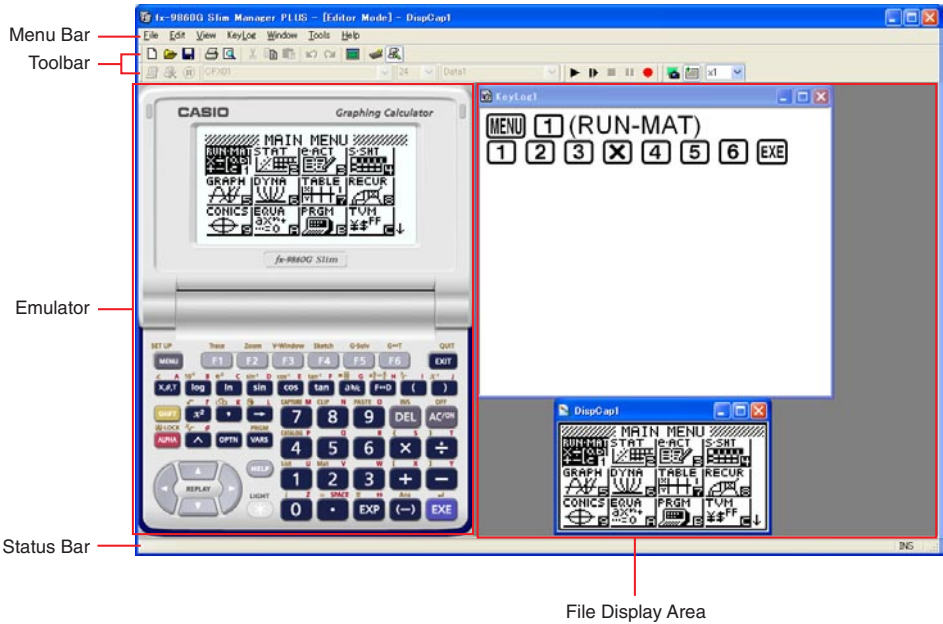
## To start up fx-9860G Slim Manager PLUS

1. On your computer’s desktop, click the “9860SlimManager+” icon.
  - You could also start up the application by clicking [Start] - [Program] - [CASIO] - [fx-9860G Slim Manager PLUS] - [fx-9860G Slim Manager PLUS].



# 2. Screen Configuration

The following shows the fx-9860G Slim Manager PLUS screen.



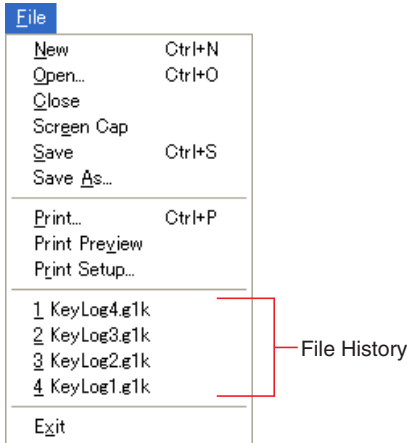
\* A pixel resolution setting of 1024 × 768 is recommended for your computer screen.







\* When you have both the emulator window and Key-Log (or bitmap file) window open on the display, the emulator window always will be displayed on top.

# Menu Bar

- This section explains the fx-9860G Slim Manager PLUS menu bar.
- If a menu command can also be executed by clicking a toolbar button, the applicable toolbar button is also provided.




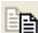

## ■ File Menu



Menu	Toolbar Button	Description
New		Creates a new Key-Log file.
Open		Opens an existing file.
Close		Closes the currently open file.
Screen Cap		Captures the emulator screen.
Save		Saves the current work file, overwriting the previous (unedited) version.
Save As		Saves the current work file under a new name.
Print		Prints the currently displayed bitmap file.
Print Preview		Displays a preview of the print image.
Print Setup		Displays the print setup dialog box.
(File History)		Shows up to four of the last files you worked on.
Exit		Exits fx-9860G Slim Manager PLUS.

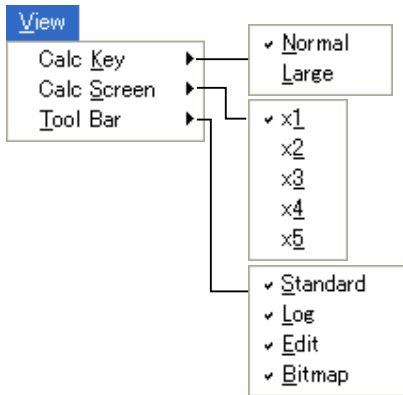
## ■ Edit Menu

Edit	
<u>U</u> ndo	Ctrl+Z
<u>R</u> edo	Ctrl+Y
<u>C</u> ut	Ctrl+X
<u>C</u> opy	Ctrl+C
<u>P</u> aste	Ctrl+V
<u>C</u> lear	Del
<u>S</u> elect All	Ctrl+A

Menu	Toolbar Button	Description
Undo		Undoes the last operation.
Redo		Redoes the last undone operation.
Cut		Cuts the currently selected screen area and places it onto the clipboard.
Copy		Copies the currently selected screen area to the clipboard.
Paste		Pastes the clipboard contents.
Clear		Deletes the currently selected area.
Select All		Selects all Key-Log records.

\* The Edit menu is disabled during emulator operation.

## ■ View Menu



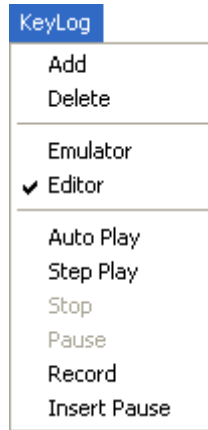
Menu	Submenu	Description
Calc Key	Normal	Selects normal-size calculator keys.
	Large	Selects large-size calculator keys.
Calc Screen	x1	Specifies an actual size display.
	x2	Specifies a 2X size display.
	x3	Specifies a 3X size display.
	x4	Specifies a 4X size display.
	x5	Specifies a 5X size display.
Tool Bar	Standard	Toggles display of the standard toolbar on and off.
	Log	Toggles display of the log toolbar on and off.
	Edit	Toggles display of the edit toolbar on and off.
	Bitmap	Toggles display of the bitmap toolbar on and off.

## ■ Key-Log Menu

Emulator mode

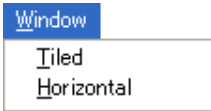


Key-Log editor mode



Menu	Toolbar Button	Description
Add		Adds a new Key-Log record.
Delete		Deletes the currently displayed Key-Log record.
Emulator		Enters the emulator mode.
Editor		Enters the Key-Log editor mode.
Auto Play		Starts Key-Log auto playback.
Step Play		Starts Key-Log manual playback.
Stop		Stops Key-Log playback or recording.
Pause		Pauses Key-Log playback.
Record		Starts Key-Log recording.
Insert Pause		During Key-Log editing, inserts a pause character into Key-Log playback.

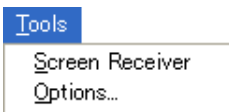
## ■ Window Menu




Menu	Description
Tiled	Displays all windows in a tiled configuration.
Horizontal	Displays all windows in a horizontal line.

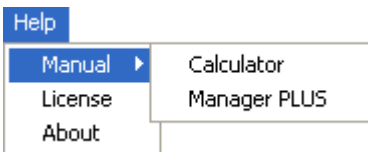
- The Window menu also shows the names of files that you have open. When you have multiple files open, the file name at the top of the list is the one you are currently working with the active file.

## ■ Tools Menu



Menu	Toolbar Button	Description
Screen Receiver		Starts up Screen Receiver.
Options		Displays a dialog box for configuring optional settings.

## ■ Help Menu



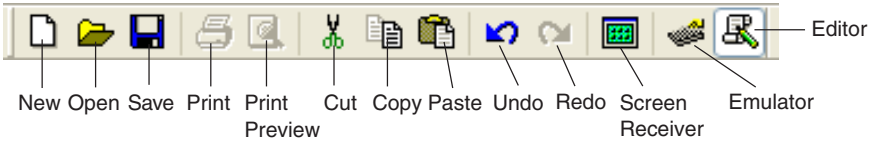
Menu	Submenu	Description
Manual	Calculator	Displays the fx-9860G Slim Graphing Calculator User's Guide.
	Manager PLUS	Displays the fx-9860G Slim Manager PLUS User's Guide.
License		Displays the end user license agreement.
About		Displays version information.

---

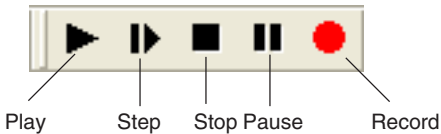
## Toolbar

- This section explains the fx-9860G Slim Manager PLUS toolbar buttons.
- The toolbar buttons correspond to menu bar commands. See the section of this manual that explains the menu bar for details about each button's function.

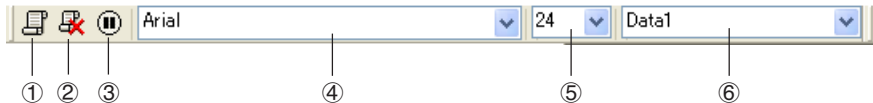
### ■ Standard Toolbar



### ■ Log Toolbar



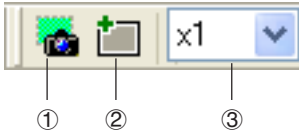
### ■ Edit Toolbar



- ① Add
- ② Delete
- ③ Insert Pause
- ④ Font ... Specifies the font of input text.
- ⑤ Font Size ... Specifies the font size of input text.
- ⑥ Key-Log Record ... Selects the Key-Log record to be played back or edited.



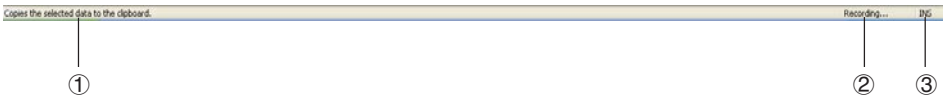
## ■ Bitmap Toolbar



- ① Screen Cap
- ② Outer Frame  
Specifies an outer frame for screen captures.
- ③ Bitmap Size  
Specifies the bitmap size. A setting of 1 through 10 can be selected.

---

## Status Bar




- ① Help text is displayed here.
- ② Displays the process currently being performed.
- ③ Toggles between the insert and overwrite modes.  
Clicking here while in the Key-Log editor mode toggles between the insert mode and overwrite mode.

# 3. Emulator Mode and Key-Log Editor Mode

fx-9860G Slim Manager PLUS has two modes.

You can use either of the following to operations to select the mode you want.

- On the [KeyLog] menu, select either [Emulator] or [Editor].
- On the standard toolbar, click  or  .

## Emulator Mode

Use this mode when you want to perform mainly emulator operations.

## Key-Log Editor Mode

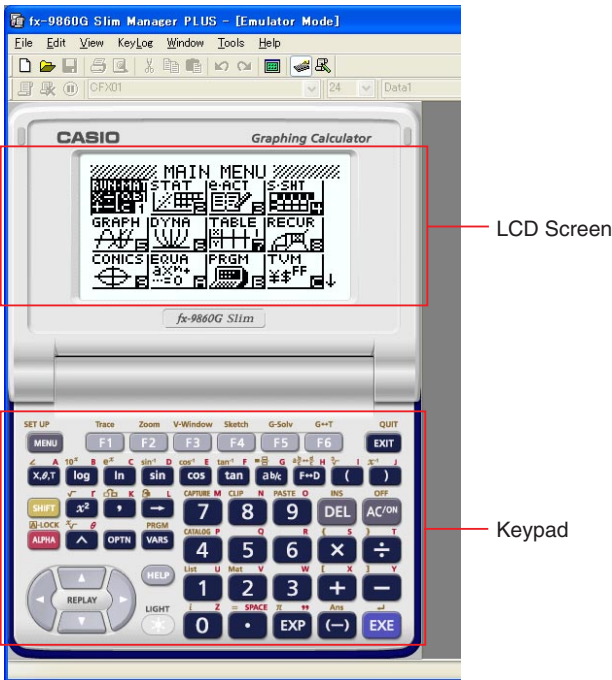
Use this mode when you want to perform mainly Key-Log data operations.

# 4. Emulating fx-9860G Slim Calculator Operation

- The emulator makes it possible to mimic fx-9860G Slim calculator operation using your computers mouse and keyboard.
- For details about emulator operations, see the fx-9860G Slim User’s Guide. You can view the User’s Guide by selecting [Manual] - [Calculator] on the Help menu.
- Note that some emulator functions are different from the functions of the fx-9860G Slim calculator. For details, see “9. Differences between fx-9860G Slim Calculator and fx-9860G Slim Manager PLUS Functions” (page E-33).

## ■ Using the Emulator

- Key operations are identical to those you perform on the calculator.
- Operation results appear on the LCD screen.



In the Emulator Mode, you use your computer keyboard to operate the emulator. The following explains the keyboard keys you should use to perform each emulator key operation.

(1) Computer keyboard keys that have the same key markings as the emulator keys



(2) Computer keyboard keys that have different key markings as the emulator keys

Computer Key	Emulator Key
[Tab]	AC
[Insert]	SHIFT
[Home]	OPTN
[Page Up]	VAR
[Page Down]	MENU
[End]	ALPHA
[Esc]	EXIT
[Delete]	DEL
[Back Space]	DEL
[Enter]	EXE
[*]	X
[/]	÷

### ***Important!***

- Always use the emulator's keys whenever creating eActivity Guide operations. Computer key operations cannot be recorded. For details about the eActivity Guide function, see "10-6 eActivity Guide" in the fx-9860G Series Software Version 1.10 User's Guide.

## **■ Changing the Size of the Emulator**

You can select one of two sizes for the emulator's keypad and one of five sizes for the display area.

### **To specify the size of the keypad**

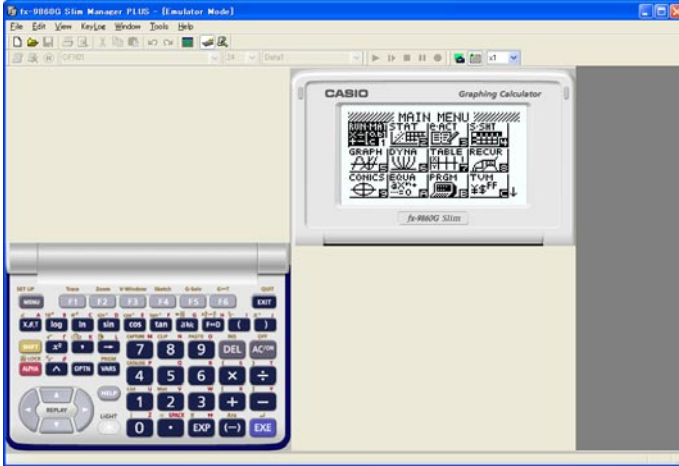
1. On the [View] menu, select [Calc Key].
2. From the submenu that appears, select the keypad size you want.

### **To specify the size of the LCD screen**

1. On the [View] menu, select [Calc Screen].
2. From the submenu that appears, select the LCD screen size you want.

## ■ Moving the LCD Screen Area and Keypad

- You can drag the LCD screen and the keypad to any location you want on your computer screen.

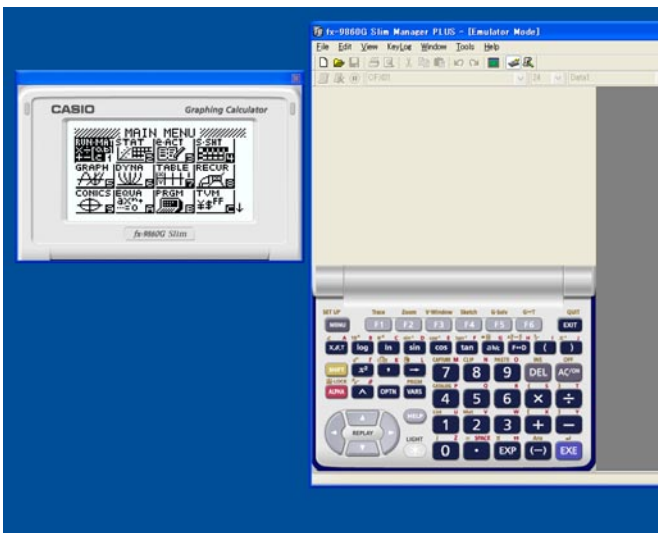


## ■ Using the Floating Emulator Feature

- You can display the emulator LCD screen and its keypad in their own windows that are separate from the fx-9860G Slim Manager PLUS window.

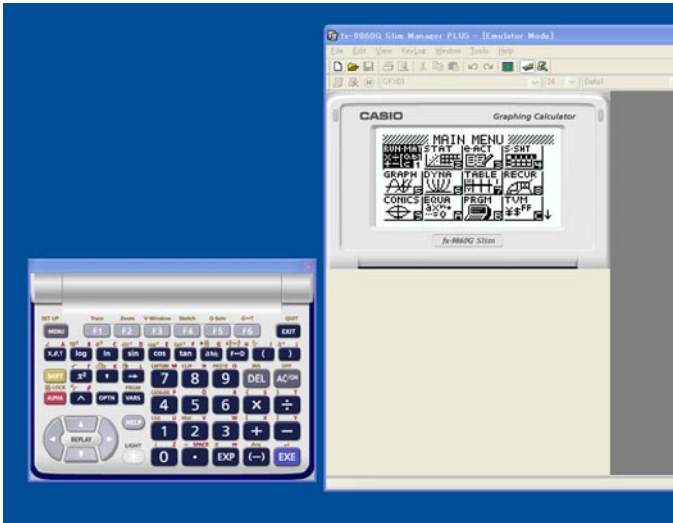
### To make the LCD screen a floating window

1. Double-click the LCD screen.
2. Drag the LCD screen to the left so it is outside of the main application window, and drop it there.



## To make the keypad a floating window

1. Double-click the keypad.
2. Drag the keypad to the left so it is outside of the main application window, and drop it there.



## ■ Moving the LCD Screen and Keypad Back into the Main Window

- Perform the following steps to move the LCD screen and/or keypad back into the fx-9860G Slim Manager PLUS main window from independent floating windows.
  - Double-click the floating LCD screen and/or keypad.
  - Drag the LCD screen and/or keypad back to the left side of the fx-9860G Slim Manager PLUS main window.

### ***Important!***

- You can return an independent floating window to the main window by dragging the floating window to the left side of the main window only. Dragging top, bottom, or right side of the main window will not work.

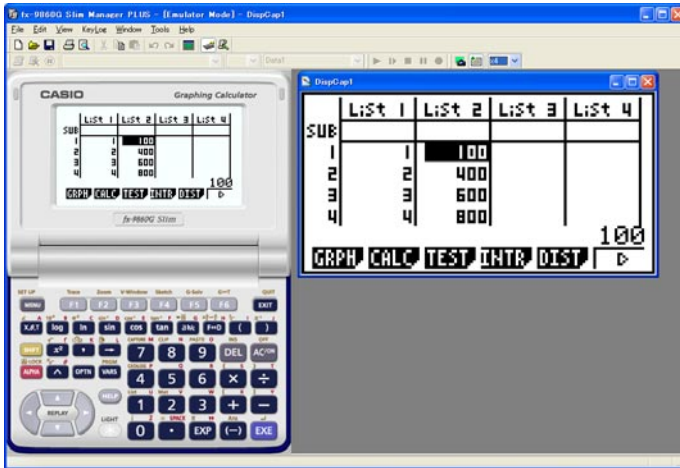
## ■ Capturing the Emulator LCD Screen Image

- You can use the following procedure to capture an image of the emulator LCD screen.

### To capture the emulator LCD screen image

1. On the [File] menu, select [Screen Cap] to display a capture of the emulator LCD screen.

- You could also click  on the bitmap toolbar.



- You can also add a frame to the captured image or change the image zoom factor, if you want. For details, see “Bitmap Toolbar” (page E-15) and “LCD Screen Capture Settings” (page E-28).
- If either a window containing of a captured image or the Key-Log screen is currently maximized (using the Windows maximize command) on your computer display, any window produced by the capture operation will also be maximized. This is true regardless of the size setting specified for screen capture on the Options dialog box (page E-28).

2. Select the captured screen image window and then click  to save it to a file.

\* You can save a screen capture as either of the two following file formats.



- Monochrome bitmap format
- JPEG format

This application uses libraries by the Independent JPEG Group.

## ■ Opening a Saved LCD Screen Image

- You can open a saved LCD screen image and display it on your computer. You can have multiple screen images open at the same time.
- LCD screen images can be copied and pasted into other applications in order to create operation example handouts, assignments, etc.
  - \* Only bitmap files can be opened using this procedure. Opening of JPEG files is not supported.

## To copy an LCD screen image and paste it into another application

1. Click  and then open the file that contains the LCD screen image you want to copy.
2. Select the LCD screen image window and then click  to copy it to the clipboard.
3. Open the other application and then paste the contents of the clipboard.

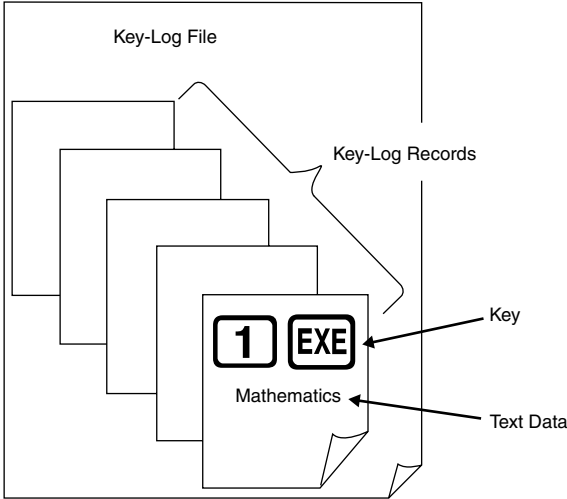


# 5. Using the Emulator Key-Log

This section explains how to use the Key-Log, which is a log of the emulator's key operations. It also covers playback of recorded key operations and editing of Key-Log records. All of the operations in this section are performed using toolbar buttons.

## ■ Key-Log File Structure

A Key-Log file can contain multiple Key-Log records. Key-Log records contain recorded key operations and text. The following shows the Key-Log file structure.




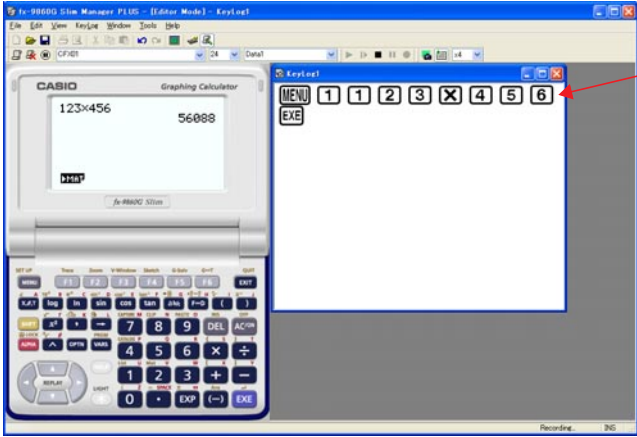
- You can assign names (up to 20 single-byte characters) to Key-Log records.

### **Important!**



- Key-Log data processing can take a long time when there is a lot of data. This is normal and does not indicate malfunction.
- Only key operation procedures are stored in a Key-Log file. Because of this, replaying Key-Log contents starting from an initial screen that is different from the one that was displayed when the data was originally stored may produce different results.
- A key operation may not be stored to a Key-Log if you click it while an emulator calculation operation is in progress.

# To record emulator key operations using Key-Log



- 1. Click  to start Key-Log recording.
- 2. Perform operations on the emulator.

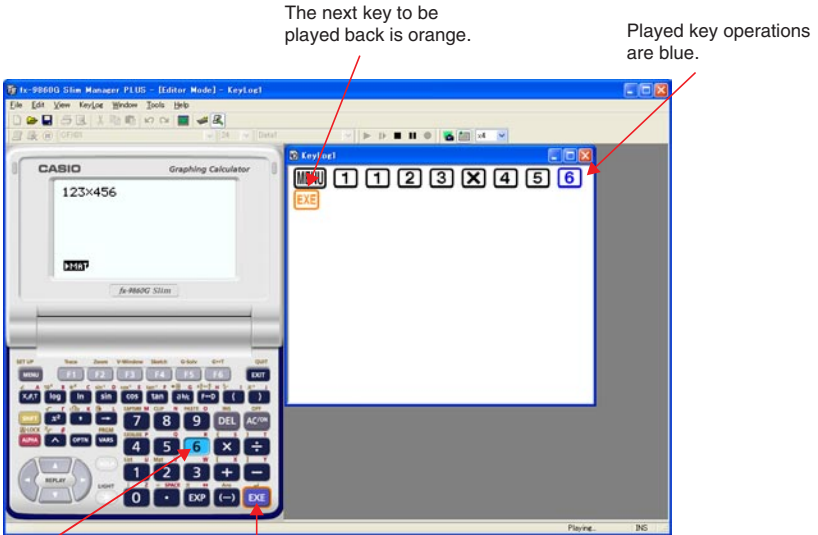


Keys appear in the sequence you press them.

- 3. Click  to stop Key-Log recording.
- 4. Click  to save the Key-Log file.



# To perform Key-Log auto play of a recorded key operation


1. Click  and then open the Key-Log file you want to play.
2. Click  to start playback.



The last played key is blue.

The next key to be played is framed in orange.

- Click  to pause playback.
- Click  to restart playback after pausing it.





3. To stop playback, click . Stopping playback causes all keys to return to their original colors.

### Note


- You can use the optional settings dialog box (page E-28) to configure playback settings like the key playback interval following a pause, the color of playback keys, etc.
- Simultaneous playback of multiple Key-Log files is not supported. If you try to open a Key-Log file while another Key-Log file is already open, the currently open file will close automatically. If the currently open file has been edited, a message will appear asking if you want to save it before closing.



## To playback a Key-Log record manually (STEP playback)

1. Click  and then open the Key-Log file you want to play.
2. Click  to play the first key operation in the Key-Log.
3. Keep pressing  to play Key-Log contents one step at a time.
4. To stop playback, click .

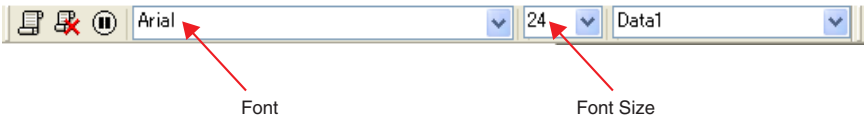
## To edit a Key-Log record

1. Click  and then open the Key-Log file you want to edit.
2. Select the Key-Log record you want to edit.




Select the Key-Log record from this menu.

3. Edit the key operations and text of the Key-Log record.
  - You can use normal text input and editing operations to edit the keys in a Key-Log record.
  - When inputting text, you can specify the font and font size you want to use.



4. Click  to save the Key-Log file.

## To add a Key-Log record to the currently open Key-Log file


After opening the Key-Log file to which you want to add the record, click .

This automatically assigns the Key-Log record a name (Example: “Data1”) and displays it in the menu.

## To rename a Key-Log record

1. Select the Key-Log record you want to rename from the menu.
2. Click the name of the Key-Log record and then change it.
3. Press the [Enter] key.

## To delete a Key-Log record

1. Select the Key-Log record you want to delete from the menu.
2. Click  to delete the selected Key-Log record and display the next one.

### **Note**

- There must be at least one Key-Log record in memory. You will not be able to delete a Key-Log record if it is the only one left in memory.

## ■ Inputting a Pause Character


A pause character causes Key-Log playback to pause automatically when it reaches the character.

To input a pause character, click .

## ■ Copying Keys or Text and Pasting It into Another Application

Keys and text can be copied and pasted into other applications in order to create operation example handouts, assignments, etc.

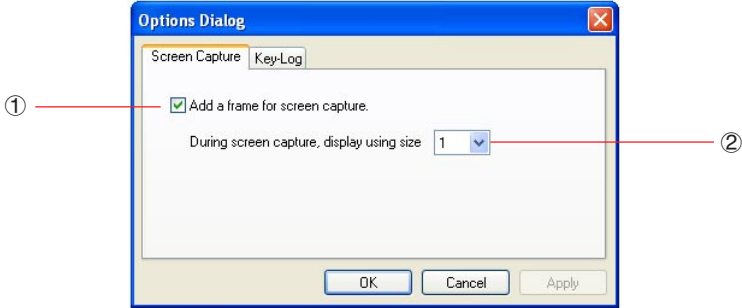
## To copy keys or text and paste it into another application

1. Drag the cursor across the keys or text you want to copy.
2. Click  to copy the selected keys or text to the clipboard.
3. Open the other application and then paste the contents of the clipboard.

# 6. Configuring Options Dialog Box Setting

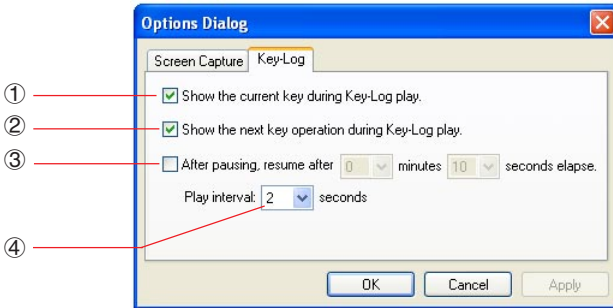
- This section explains the settings on the Options dialog box.

## ■ LCD Screen Capture Settings



- ① Select this option to add a frame to an LCD screen capture.
- ② Specifies the screen size during LCD screen capture. You can select a setting in the range of 1 through 10.

## ■ Key-Log Playback




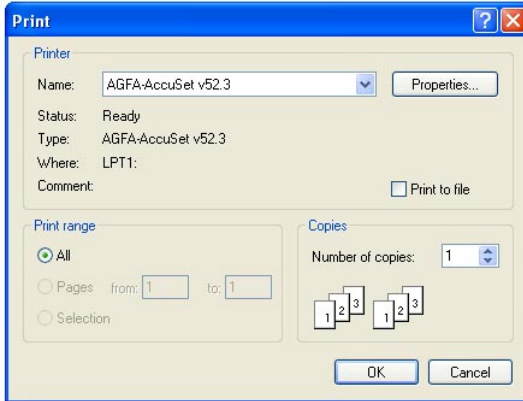
- ① Select this option to highlight the current key in blue.
- ② Select this option to frame the next key in orange.
- ③ Specifies how much time should be allowed to elapse to resume paused playback. You can set an interval in the range of 10 seconds to 10 minutes in 10-second steps.
- ④ Specifies the key playback interval during auto play. You can set an interval of 0.1 second, or any interval in the range of 0.5 to 5 seconds, in 0.5-second steps.

# 7. Other Functions

## Printing

- You can use the following procedure to print LCD screen captures.

- Click the window of the LCD screen capture that you want to print to select it.
- Click . This will display the Print dialog box.



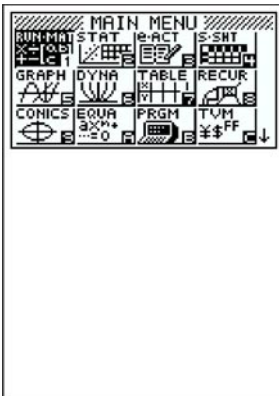
- Click [OK] to start printing.

### Important!

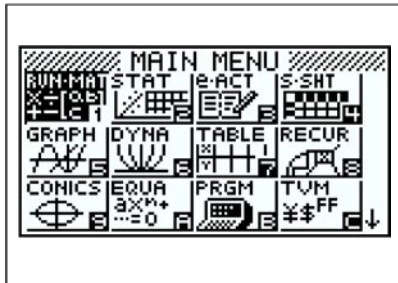
- Each screen image is printed on a separate page.
- Images are printed in accordance with width setting of the paper size selected on the Print dialog box.

Examples:

Portrait Orientation



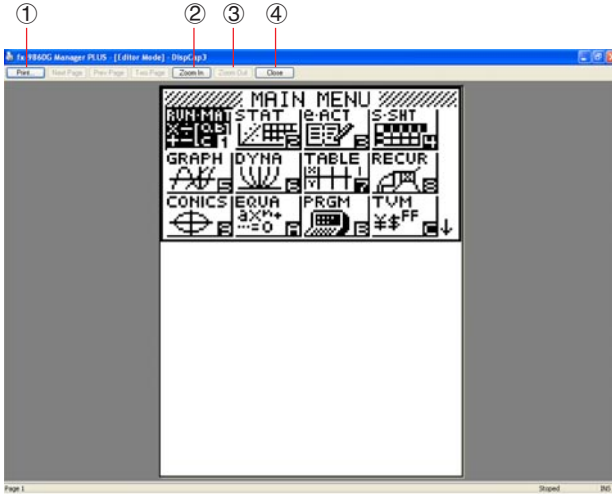
Landscape Orientation



- If you are printing a bitmap image that was created using another application and does not fit within the preview area, only the part within the preview area will be visible. Also, only that part will be printed.

## ■ Print Preview

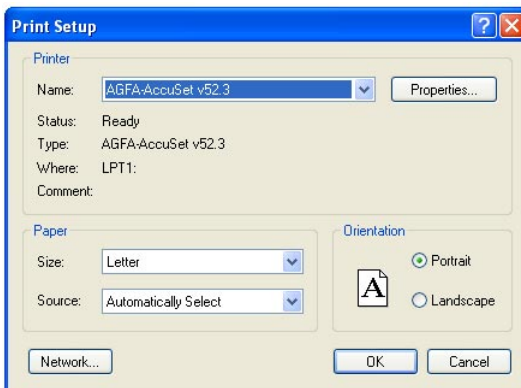
- Selecting [Print Preview] on the [File] menu displays the print preview image.



- ① Displays the Print dialog box.
- ② Enlarges the preview image.
- ③ Reduces the size of the preview image.
- ④ Closes the print preview window image.

## ■ Print Setup Dialog Box

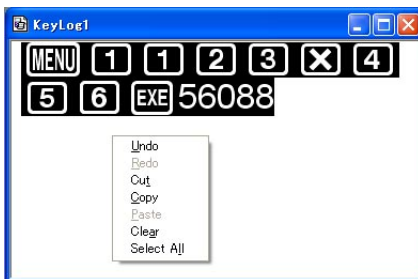
- Selecting [Print Setup] on the [File] menu displays the Print Setup dialog box.



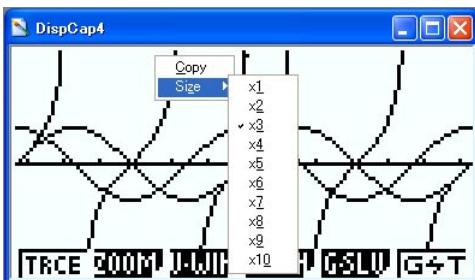


## Shortcut Menu

- Right-clicking the mouse displays one of the shortcut menus shown below.
- During Key-Log Editing

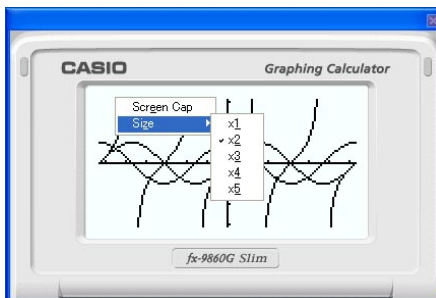


- During Bitmap Display of the Calculator Screen



A screen zoom operation affects only the screen where you display the shortcut menu. If you have multiple screens on the display, the other screens are not affected by the zoom operation.

- When Using the Emulator



- On the Emulator Keypad



# 8. File Types Supported by fx-9860G Slim Manager PLUS

- fx-9860G Slim Manager PLUS supports files with the file name extensions described below.

Extension	Description
g1m	Emulator or calculator user memory data file (variables, programs, etc.)
g1e	eActivity file
g1a	Add-In application
g1l	Add-In message
g1n	Add-In menu
g1k	fx-9860G Slim Manager PLUS Key-Log file

**Note**

- You can use the MEMORY application to import all file types (except g1k) into the emulator.
- Files with the extension g1k can be used in Key-Log files.

## 9. Differences between fx-9860G Slim Calculator and fx-9860G Slim Manager PLUS Functions

### PLUS Functions

- This section explains the differences between fx-9860G Slim calculator functions and fx-9860G Slim Manager PLUS emulator functions.

#### ■ eActivity Applications (SD Card Access)

Calculator: SD card access not supported.

Emulator: Performing an operation that accesses an SD card displays a dialog box, which can be used to open an eActivity saved on your computer or save an eActivity on your computer. Trying to perform an optimize operation while accessing an SD card will cause an error.

**Example:** To use the emulator to create a new eActivity file (ABC.g1e) on an SD card (actually your computer's hard disk)

1. From the Main Menu, enter the e-ACT mode.



2. Click **F6** (SD).

- This displays the SD access screen.



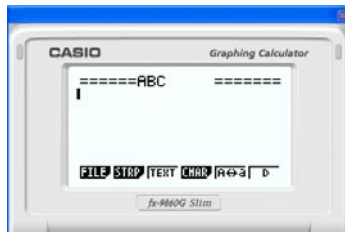
3. Click **F2** (NEW).

- This displays a file name input dialog box.



4. Select the location on your computer where you want to save the file, input the file name (ABC.g1e), and then click [Save].

- This displays the eActivity file editing screen.



\* Subsequent operations are identical to those you would perform on the calculator.

\* After you are finished, perform the required operation to save the file.

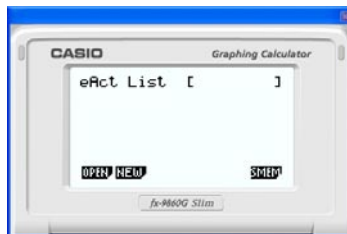
**Example:** To use the emulator to open an eActivity file (ABC.g1e) that is stored on an SD card (actually your computer's hard disk)

1. From the Main Menu, enter the e-ACT mode.



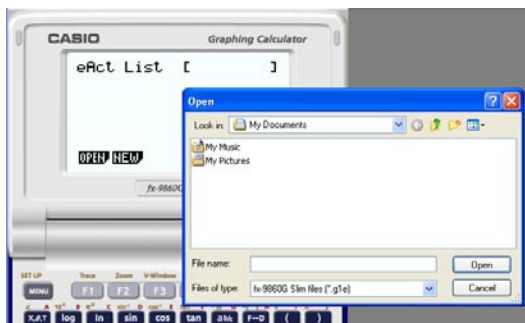
2. Click [F6] (SD).

- This displays the SD access screen.



3. Click [F1] (OPEN).

- This displays a file selection dialog box.



4. Type in the file name (ABC.g1e), and then click [Open].

- This displays the eActivity file editing screen.

## ■ LINK Application

Calculator: Data transfer execution supported.

Emulator: Data send/receive, and configuring cable, wakeup, and capture settings are not supported. Attempting to perform any of these operations causes an error.

## ■ MEMORY Applications (SD Card Access)

Calculator: SD card access not supported.

Emulator: Performing an operation that accesses an SD card displays a dialog box, which can be used to store data to a computer file and to import a file.

Trying to perform the SD card optimize operation on the emulator will cause an error.

SD card (actually your computer's hard disk) access can be performed by selecting either a folder or a file. What you select depends on the type of operation you want to perform.

### When to select a folder on your computer's hard disk

Select a folder on your computer's hard disk when you want to perform any one of the following operations.

- Copying main memory or storage memory contents to an SD card (actually your computer's hard disk)
- Loading backup data from an SD card (actually your computer's hard disk)
- Saving backup data to an SD card (actually your computer's hard disk)

**Example:** To use the emulator to save backup data to your computer

1. From the Main Menu, enter the MEMORY mode.



2. Click **F4**(BKUP) **F1**(SAVE).

- This displays the save location selection screen.



3. Click [2].

- This displays the folder selection screen.



4. Select the folder you want and then click [OK].

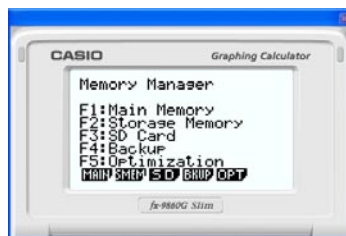
- The backup data is saved to the folder you select.

### When to select a file on your computer's hard disk

Select a file on your computer's hard disk when you want to perform the following operation.

- Copying a file on an SD card (actually your computer's hard disk) to main memory or storage memory

1. From the Main Menu, enter the MEMORY mode.



2. Click [F3] (SD).

- This displays the file selection screen.



3. Select the file you want and then click [Open].

- This displays the main memory/storage memory selection screen.
- Selecting a destination (main memory or storage memory) will start the copy operation.

## ■ SYSTEM Applications (Contrast, Auto Power Off, Reset)

Calculator: Contrast adjustment and auto power off setting configuration supported.

Emulator: Contrast adjustment and auto power off setting configuration not supported. Attempting to perform any of these operations causes an error.

## ■ Installing an Add-In

You can perform the following procedure on the emulator to install an Add-In application, Add-In language, or an eActivity.

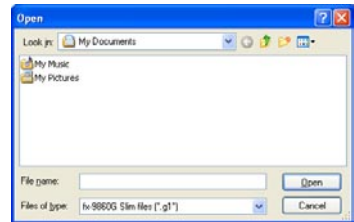
**Example:** To install an Add-In application

1. From the Main Menu, enter the MEMORY mode.



2. Click [F3] (SD).

- This displays a dialog box for opening a file.



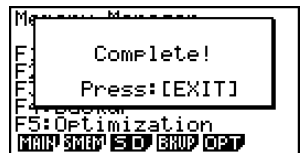
3. Select the Add-In file you want and then click [Open].



4. Click [2].



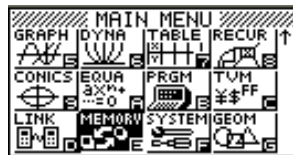
5. Click [EXE].



6. Click [EXIT].

7. Click **MENU**.

- The icon of the application you just installed should be visible on the Main Menu.



- Some Add-In applications may act differently on the fx-9860G Slim calculator than they do on the emulator.

## ■ LIGHT Key

Calculator: Turns on the display backlight.

Emulator: No operation

## ■ HELP Key

Calculator: Enables the HELP function.

Emulator: Enables the HELP function only if Key-Log recording is stopped or paused. The HELP key is disabled while Key-Log recording or playback is in progress.

## ■ OFF (**SHIFT** + **AC**)

Calculator: Turns off power.

Emulator: Does not turn off the emulator. (**SHIFT** + **OFF** does not perform any operation.)

## ■ COPY & PASTE

Calculator: COPY & PASTE supported on the calculator.

Emulator: COPY & PASTE supported on the calculator, and between the calculator and other applications running on the computer. Note, however, that in the case of spreadsheet formulas and values, copy and paste of the values only is supported. Copy and paste of error data is not supported.

Copy and paste of fx-9860G Slim calculator-specific input codes between fx-9860G Slim Manager PLUS and other applications is not supported in some cases. Windows® 98 SE in particular is not able to display a relatively large number of input codes. Because of this, use of Windows® Me, Windows® 2000, Windows® XP, or Windows Vista™ is recommended.



# 10. Using Screen Receiver to Display the Calculator Screen Image on Your Computer

This section explains how to connect an fx-9860G Slim calculator to a computer and display the calculator screen image on the computer.

### **Important!**

- Check to make sure that the operating system version of the fx-9860G Slim calculator is 1.02 or greater. If it isn't, you will need to update your operating system. For details, see the information about updating the operating in the readme.txt file on the fx-9860G Slim Manager PLUS CD-ROM.
- A USB driver install dialog box will appear the first time you connect the fx-9860G Slim calculator to your computer with the USB cable. Follow the instructions that appear on the dialog box. Screen Receiver will not operate properly if you cancel the install operation.

### **Attention Windows® XP Users**

1. Connecting fx-9860G Slim to a computer running Windows® XP causes the screen shown below to appear on your computer display.



2. Select “Install the software automatically (Recommended)” and then click [Next].



3. Though a message appears to let you know that the software has not passed the “Windows Logo Test”, there is no need for concern. Simply click [Continue Anyway] and proceed with installation.



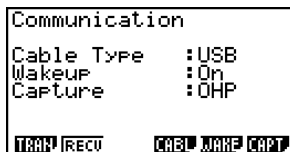
4. Click [Finish].

## ■ Configuring fx-9860G Slim Communication Settings


Before you can connect the calculator to your computer, you first need to perform the following procedure and configure the calculator's communication settings.

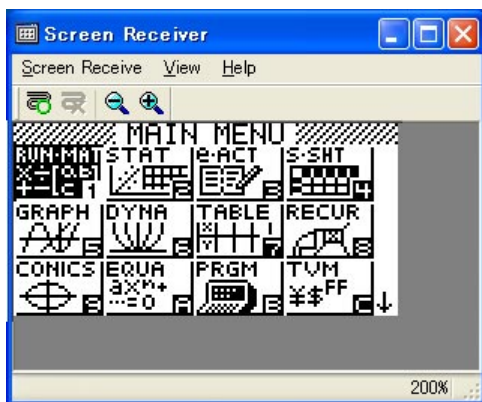
### To configure the fx-9860G Slim calculator communication settings

1. From the Main Menu, enter the LINK mode.
2. Press **F4** (CABL).
  - This displays the Select Cable Type screen.
3. Press **F1** (USB).
4. Press **F6** (CAPT).
  - This displays the Capture Set Mode screen.
5. Press **F3** (OHP).
  - This displays the screen shown nearby, which indicates that the setup procedure is complete.





### To display the calculator screen image on your computer

1. Use the USB cable that comes with the calculator to connect the calculator to your computer.
2. On the [Tools] menu, select [Screen Receiver], or click  on the toolbar.
3. A short while after Screen Receiver starts up, an image of the calculator screen will appear on your computer.



4. Operate the calculator. When you do, the calculator screen image will change in real time on your computer.

5. You can enlarge the calculator screen image by clicking  and reduce its size by clicking .

6. To close the calculator screen image, click .

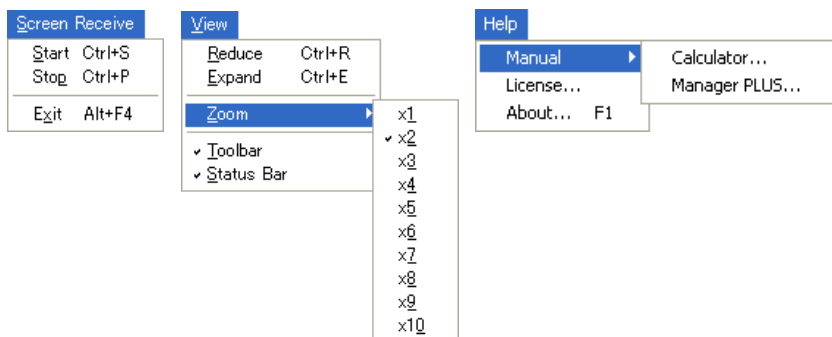
7. Disconnect the USB cable.

### Important!



- If the calculator screen does not appear, try disconnecting the USB cable and then restart the above procedure from the beginning. If the calculator screen still does not appear, check the points described below.

If this is the problem:	Do this:
The USB cable is disconnected.	Reconnect the USB cable.
There are multiple calculators connected.	Disconnect the other calculators so there is only one left connected.
There is another CASIO product connected with a USB cable.	Disconnect the other CASIO product.
The message "ICESG502" appears on the Device Manager screen which indicates that the USB driver is not installed correctly.	Reinstall fx-9860G Slim Manager PLUS.



## ■ Screen Receiver Menus



### Screen Receive Menu

Menu	Toolbar Button	Description
Start		Displays the calculator screen image.
Stop		Closes the calculator screen image.
Exit		Exits Screen Receiver.

## View Menu

Menu	Submenu	Toolbar Button	Description
Expand			Enlarges the calculator screen image.
Reduce			Reduces the size of the calculator screen image.
Zoom*	×1		Shows the calculator screen image in actual size.
	×2		Shows the calculator screen image is ×2 size.
	×3		Shows the calculator screen image is ×3 size.
	×4		Shows the calculator screen image is ×4 size.
	×5		Shows the calculator screen image is ×5 size.
	×6		Shows the calculator screen image is ×6 size.
	×7		Shows the calculator screen image is ×7 size.
	×8		Shows the calculator screen image is ×8 size.
	×9		Shows the calculator screen image is ×9 size.
	×10		Shows the calculator screen image is ×10 size.
Toolbar			Toggles display of the toolbar on and off.
Status Bar			Toggles display of the status bar on and off.

\* The allowable zoom size is limited by the resolution of the computer.

## Help Menu

Menu	Submenu	Description
Manual	Calculator	Displays the fx-9860G Slim Graphing Calculator User's Guide.
	Manager PLUS	Display the fx-9860G Slim Manager PLUS User's Guide.
License		Displays the end user license agreement.
About		Displays version information.

# 11. Error Message Table

## ■ fx-9860G Slim Manager PLUS

Message	Description	Required Action
An error occurred while reading the file <file name>. The file may be corrupted.	Wrong file format.	Check the file to see if it is corrupted.
There is no more playable data.	There are no playable keys to the right of the input cursor.	Move the input cursor to the left of the keys you want to play back, and perform the play operation.
You cannot delete all Key-Log records. Before deleting the selected record, first add a new record.	You are trying to delete all Key-Log records, which is not allowed.	To delete all of the current records, first add a different record. At least one Key-Log record must be remaining in memory.
This application cannot run on this computer's operating system.	You are trying to run the application under an operating system that is not supported.	Run the application on a computer that is using a supported operating system.
<file name> This file is read-only. Use a different file name.	You are trying to save a read-only Key-Log file after editing or recording to it.	Save the Key-Log file under a different file name.
A problem occurred while adding a Key-Log record. After confirming there is enough memory capacity to store the record, try again.	Some problem occurred while adding a Key-Log record.	Make sure there is enough free memory remaining to complete the operation and try again.
Make sure that you are logged on with administrator privileges.	You currently are logged on with non-administrator privileges.	Make sure that you are logged on with administrator privileges.
A problem occurred while writing to the file <file name> because not enough disk space is available. Check the remaining capacity of your disk and try again.	There is not enough disk space available to save the file.	Make sure there is enough free memory available and try again.
This application cannot be started up because the DLL version is wrong. This may be due to a problem during installation. Re-install the application.	Your computer has the wrong DLL version.	Installation may have failed, so re-install the application.

Message	Description	Required Action
<p>A problem occurred while reading file &lt;file name&gt;. The disk being read from may be damaged or may not exist. Check the disk and try again.</p>	<p>A problem occurred while reading from a disk.</p>	<p>Check the disk for data corruption and confirm that the disk exists. Then try again.</p>
<p>A problem occurred while writing file &lt;file name&gt;. The disk being written to may be damaged or may not exist. Check the disk and try again.</p>	<p>A problem occurred while writing to a disk.</p>	<p>Check the disk for data corruption and confirm that the disk exists. Then try again.</p>
<p>A problem occurred while reading file &lt;file name&gt;. The file may have been moved or deleted.</p>	<p>A problem occurred when you tried opening a file from the list of previously opened files on the File menu.</p>	<p>Check to see if the file has been moved or deleted.</p>
<p>There is not enough memory. Increase memory capacity and try again.</p>	<p>There is not enough memory to perform the operation.</p>	<p>Increase memory capacity and try again.</p>
<p>A problem occurred while launching the emulator. Try re-starting the application. If you still cannot launch, it could mean that the emulator is damaged. Update the emulator or reinstall it.</p>	<p>A problem occurred during emulator startup.</p>	<p>Try restarting the application. If this does not work, it could mean that the emulator is damaged. Update the emulator or reinstall it.</p>
<p>A problem occurred while launching the manual (***.pdf) viewer. Download the viewer from the site below and reinstall it. <a href="http://www.adobe.com/products/acrobat/readstep2_allversions.html">http://www.adobe.com/products/acrobat/readstep2_allversions.html</a></p>	<p>A problem occurred during manual viewer startup.</p>	<p>Download and install a new viewer from <a href="http://www.adobe.com/products/acrobat/readstep2_allversions.html">http://www.adobe.com/products/acrobat/readstep2_allversions.html</a>.</p>
<p>The following characters cannot be used in a Key-Log record name. :\/?*[]</p>	<p>The Key-Log record name you are trying to use contains an illegal character.</p>	<p>The following characters are not allowed in Key-Log record names. :\/?*[]</p>
<p>A system error has occurred. Exit the emulator and restart it. If this does not correct the problem, it could mean that the emulator file is damage. Reinstall the emulator.</p>	<p>—</p>	<p>Follow the steps that are shown on the display and try again.</p>

Message	Description	Required Action
<p>A system error has occurred.</p> <p>(1) Shut down all other applications that you are not currently using.</p> <p>(2) Check how much free space is available on your computer's hard disk.</p> <p>(3) Exit the emulator and restart it.</p> <p>If this does not correct the problem, it could mean that the emulator file is damaged. Reinstall the emulator.</p>	—	Follow the steps that are shown on the display and try again.
<p>A problem occurred while accessing the registry. Check to make sure that the emulator is installed correctly.</p>	fx-9860G Slim Manager PLUS cannot be started up. The USB driver is not installed correctly.	Reinstall the USB driver.
<p>The path and/or filename exceeds the maximum length allowed by your Windows operating system.</p>	The number of letters in the path or file name you specified exceeds the allowable limit.	Shorten the specified path or file name.
<p>A problem occurred while importing &lt;file name&gt;. Note that import of a file created on another model is not supported.</p>	Some problem occurred while importing the file.	Make sure that the file was created using a calculator with the same model name as this calculator.
<p>A Key-Log file cannot be created or opened while Key-Log data is being played back or recorded. Stop playback or recording and try again.</p>	You are trying to create a new Key-Log file or open an existing Key-Log file while Key-Log data is being played back or recorded on the calculator.	Stop playback or recording and try again.
<p>File Extension Error</p>	The file you selected has an invalid file name extension.	Make sure that the extension of the file you are selecting is bmp or jpg.
<p>&lt;path&gt; Invalid Extension</p>	The file path you selected has an invalid file name extension.	Make sure that the extension of the file path you are selecting is bmp or jpg.
<p>A problem occurred while accessing the registry. Check to make sure that the emulator is installed correctly.</p>	Some problem occurred during registry access.	Re-installation of the emulator is recommended.
<p>A system error has occurred. Exit the emulator and restart it. If this does not correct the problem, it could mean that the emulator file is damaged. Reinstall the emulator.</p>	A system error occurred.	Re-installation of the emulator is recommended.



<b>Message</b>	<b>Description</b>	<b>Required Action</b>
Invalid File Name	You specified an invalid file name.	Make sure that you are specifying the file name correctly.
Invalid Folder Name	You specified an invalid folder name.	Make sure that you are specifying the folder name correctly.
Too Many Files Selected	The number of files you selected exceeds the allowable limit.	Reduce the number of selected files.

## ■ Screen Receiver

<b>Message</b>	<b>Description</b>	<b>Required Action</b>
A connection could not be established. Either the calculator is not connected or the connected calculator is not in the OHP Mode. Correct the problem and try again. For details, select the following on the menu bar: Help - Manual - Manager PLUS, or refer to the Manager PLUS user's guide.	You started a data communication operation while the USB cable was not connected.	Check for proper connection of the calculator to the computer and confirm that the calculator is in the OHP mode. Then try again. See "10. Using Screen Receiver to Display the Calculator Screen Image on Your Computer" for details.
A problem occurred during communication. Disconnect the USB cable, check the setup of the calculator, and try again. For details, select the following on the menu bar: Help - Manual - Manager PLUS, or refer to the Manager PLUS user's guide.	Some problem occurred during data communication.	Disconnect the USB cable and check the setup of the calculation. Then try again. See "10. Using Screen Receiver to Display the Calculator Screen Image on Your Computer" for details.
Multiple calculators have been detected. To start communication, make sure there is a USB connection with a single calculator.	Multiple calculators are connected to the computer.	Make sure that there is only one USB connection to a single calculator before starting communication. See "10. Using Screen Receiver to Display the Calculator Screen Image on Your Computer" for details.

<b>Message</b>	<b>Description</b>	<b>Required Action</b>
<p>The image could not be sent from the calculator.</p> <p>(1) Try pressing a key on the calculator.</p> <p>(2) Check to make sure that the calculator is in the OHP Mode.</p> <p>If the screen is not sent after you perform the above steps, disconnect the USB cable and check the calculator setup. Next, reconnect and try again. For details, select the following on the menu bar: Help - Manual - Manager PLUS, or refer to the Manager PLUS user's guide.</p>	<p>The calculator screen image cannot be sent for some reason.</p>	<p>Follow the steps that are shown on the display and try again.</p> <p>See "10. Using Screen Receiver to Display the Calculator Screen Image on Your Computer" for details.</p>
<p>The connection has been broken for some reason and is being restored.</p> <p>If data communication does not resume after some time, perform the operation described below.</p> <p>Try pressing a key on the calculator. If the screen is not sent after you perform the above steps, disconnect the USB cable and check the calculator setup. Next, reconnect and try again. For details, select the following on the menu bar: Help - Manual - Manager PLUS, or refer to the Manager PLUS user's guide.</p>	<p>—</p>	<p>Follow the steps that are shown on the display and try again.</p>

**CASIO®**

**CASIO COMPUTER CO., LTD.**

6-2, Hon-machi 1-chome  
Shibuya-ku, Tokyo 151-8543, Japan

## Free Manuals Download Website

<http://myh66.com>

<http://usermanuals.us>

<http://www.somanuals.com>

<http://www.4manuals.cc>

<http://www.manual-lib.com>

<http://www.404manual.com>

<http://www.luxmanual.com>

<http://aubethermostatmanual.com>

Golf course search by state

<http://golfingnear.com>

Email search by domain

<http://emailbydomain.com>

Auto manuals search

<http://auto.somanuals.com>

TV manuals search

<http://tv.somanuals.com>