

Release Notes

English

oXYgen Scan

Version 2.5.5

including

oXYgen Scan for Scientific Research

Copyright



© 2005 Kodak. All rights reserved.

Creo, EverSmart, and oXYgen are trademarks of Kodak.

Adobe, Acrobat, Adobe Illustrator, Distiller, Photoshop, PostScript, and PageMaker are trademarks of Adobe Systems Incorporated.

Apple, iMac, Power Macintosh, Mac OS, AppleShare, AppleTalk, TrueType, ImageWriter, and LaserWriter are registered trademarks of Apple Computer, Inc. Macintosh is a trademark of Apple Computer, Inc., registered in the U.S.A. and other countries.

PANTONE, Hexachrome, PANTONE Hexachrome, and PANTONE MATCHING SYSTEM are the property of Pantone, Inc.

PEARL, PEARLsetter, PEARLhdp, PEARLdry, and PEARLgold are registered trademarks of Presstek, Inc.

XEROX® is a trademark of XEROX CORPORATION.

<http://graphics.kodak.com/>

Internal 739-00249A-EN Rev A

Revised December 2005

Contents

Overview	1
oXYgen Scan for Scientific Research.....	1
Version Highlights.....	2
Minimum System Requirements.....	2
Installation Procedure on Mac OS X	3
Application Folder.....	4
Registration	4
Recommendations	5
Documentation Folder	5
Feature Details.....	6
Numbered Mask Display	6
Removing the Moire Effect in Copydot Scans	7
16-bit B/W Mode	8
Producing a Gray Image from a Black-and-white or Color Original	10
Defining a Crop Area for Analysis	11
Using a Naming Convention	12
Quick Balance in Negative Mode.....	13
Known Limitations.....	14

Overview



Kodak oXYgen Scan version 2.5.5 software (CD 634-00277D) supports *Kodak EverSmart Supreme II* and *Kodak EverSmart Select II* scanners, as well as *Kodak EverSmart Supreme* and *Kodak EverSmart Select* scanners with *FireWire* connectivity. Its features include a 16-bit mode for black-and-white originals, custom crop analysis, as well as automatic naming and numbering that suit image-indexing requirements. *oXYgen Scan* version 2.5.5 enables you to further improve the high quality of your scans and ensure the integrity of your workflow.

oXYgen Scan for Scientific Research



From *oXYgen Scan* version 2.5.5, you can also install *Kodak oXYgen Scan for Scientific Research*, the specialized software designed for use in scientific research labs. With an interface that's straightforward and easy to use, it provides automatic and manual focus, and enables batch scans that span the height of multiple sections.

Benefit from the flexibility of choosing from a variety of file types for your scanned files including 16-bit Raw (as RGB or separate red, green, or blue channels) and toned 16-bit or 8-bit RGB that give you the added value of our advanced image-processing algorithms and high-quality color tools.

Version Highlights

oXYgen Scan version 2.5.5 software provides the following new features and enhancements:

- Direct access to oXYgen Scan for Scientific Research software. For details about this software, which includes specialized tools and new Setup dialog box options, see the oXYgen Smart Tips: Scientific Research Tools document.
- 16-bit B/W scanning mode for B/W or RGB images. You can now scan a B/W original negative as a color RGB 16-bit and obtain a neutral image. New options are available in the Setup dialog box that are specifically designed for this workflow. For details, see “16-bit B/W Mode” on page 8.
- With RGB 16-bit files, you can include an output profile to simulate an RGB working space such as Adobe 1998 and ProFoto.
- In the Setup dialog box, the focus mode list includes **Auto**, which provides automatic focus-selection for reflective scans.
- You can specify width and height values to define an area for crop analysis, during setup or interactively in Preview. For details, see “Defining a Crop Area for Analysis” on page 11.
- Automatic image-indexing support especially useful for archiving. For details, see “Using a Naming Convention” on page 12.
- New numbered mask display.
- With copydot scans, **Excellent** scanning mode prevents moire effects with screens of over 175 lpi with 0 in. and 45 in. mesh angles. For details, see “Removing the Moire Effect in Copydot Scans” on page 7.



For detailed scanner cleaning procedures, see http://graphics.kodak.com/us/product/scanners/prepress_scanners/cleaning_videos.htm.

For more information about digital archiving, see the documents oXYgen Smart Tips: Digital Archiving with Creo Scanners and oXYgen Smart Tips: Scanning Photographic Glass Plates.

For more information about oXYgen Scan software, see the oXYgen Scanning Application User Guide and the oXYgen Scanning Application User Guide Addendum.

Minimum System Requirements

- *Apple Power Macintosh* G5 or G4 computer
- *Mac OS X* only (version 10.3.x or version 10.4.x)
- 200 MB RAM for the scanning software (not including memory for the system software)
- Minimum 2 GB of free internal hard disk space
- 24-bit color display
- Color monitor with a display resolution of 1024 x 768 pixels

Installation Procedure on Mac OS X



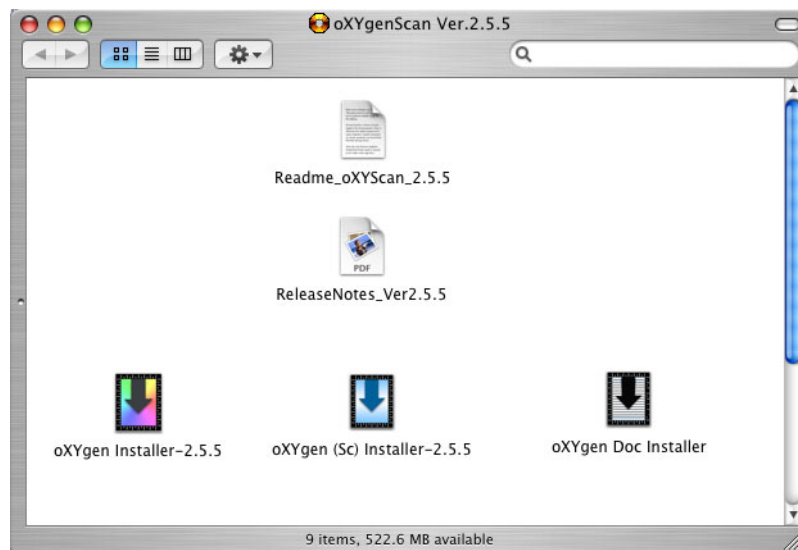
Notes:

You must create all scanner hardware tables using the Install&Utils program.

Full installation of either *oXYgen* Scan version 2.5.5 or *oXYgen* Scan for Scientific Research provides you with access to both on your system.

You must have administrator rights to install the software.

1. Insert the software CD and leave it in the CD-ROM during installation.
2. Double-click the **oXYgen Scan 2.5.5** icon.
3. In the *oXYgen* Scan Ver. 2.5.5 window, you can install any or all of the following items by double-clicking the related icon:
 - *oXYgen* Scan version 2.5.5
 - *oXYgen* Scan for Scientific Research version 2.5.5
 - Scanner and *oXYgen* documentation in one or more languages



4. In the Authenticate window, enter your user name and password, and then click **OK**.
5. In the *oXYgen* Installer window, click **Continue**.
6. In the *oXYgen* Installer Read Me window, read the information provided and click **Continue**.
7. In the Choose Folder window that opens, select the **Mac Application Folder**.



Notes:

It is important that you install the software on the hard drive not on the desktop.

A message informs you that the *Macintosh* computer may need to be restarted after installation is complete.

8. Click **Choose**. The installation starts.
When the installation is complete, a message informs you that the software is successfully installed.
9. Click **Quit**.
10. Restart the computer. The oXYgen Version Folder window opens.
11. Install the other version if you require.

Application Folder

Following installation, the **oXYgen Version 2.5.5** folder contains the following items:

- **oXYgen Scan**: Software version 2.5.5 for *EverSmart* scanners
- **Install&Utils**: Software required for installation and setting of parameters required for scanner operation
- **EverSmart Tables** folder: Contains a set of tables used by the software
- **CreoScannersExplorer**: Software for checking scanner *FireWire* connectivity
- **Open Registration**: Registration form
- **Photoshop Plugins** folder: *Adobe Photoshop* software plug-ins
- **Send to Support**: Software utility that automatically generates log files as you work.



WARNING: When you use Send to Support, detailed information from the System Profiler is automatically included in the **Send to Support** folder.

- **Read Me First** folder: Contains the software release notes for the *oXYgen Scan* version.

Registration

After running the *oXYgen Scan* software, a registration prompt appears. It is highly recommended that you register the software. As a registered user, you can access current product information.

- You can access the registration form on the software CD in the documentation folder or at http://graphics.kodak.com/us/product/scanners/prepress_scanners/everSMART_select_ii/scanners_registration_form.htm.



Note: If you do not register the software, a registration prompt appears bi-weekly until you complete the Registration Form and register the application.

Recommendations

On the internal hard disk, you should have free space that is at least three times the size of the scanned file. This space is for temporary use by the scanner.



For further information, see the oXYgen Scanning Application User Guide (399Z1P555C), Chapter 11, page 174.

Documentation Folder

The following documents are located in the **Documentation** folder on the *oXYgen* Scan software CD.

- oXYgen Scan Version 2.5.5 Release Notes (in English)
- Feedback Form for EverSmart Users (English)
- oXYgen Scanning Application User Guide (English, French, German, Italian, Spanish, Dutch, and Swedish) and the oXYgen Scanning Application User Guide Addendum (most up-to-date version in English; older version in French, German, Italian, Spanish, Dutch, and Swedish)
- Creo Smart Scanners Quick Reference Guide (English, French, German, Italian, Spanish, Chinese, and Japanese)
- Installation and user guides for *EverSmart* scanners (English, French, German, Italian, Spanish, Dutch, and Swedish)
- oXYgen Smart Tips:
 - Scientific Research Tools
 - Digital Archiving with Creo Scanners
 - Scanning Photographic Glass Plates
 - Viewing and Retouching DT Files
 - Producing Quality Scans
 - Opening Scanned Images with Photoshop Software
- Creo oXYgen DTi Scanning Procedure
- oXYgen DOT User Guide (English, French, German, Italian, Spanish, Dutch, and Swedish)

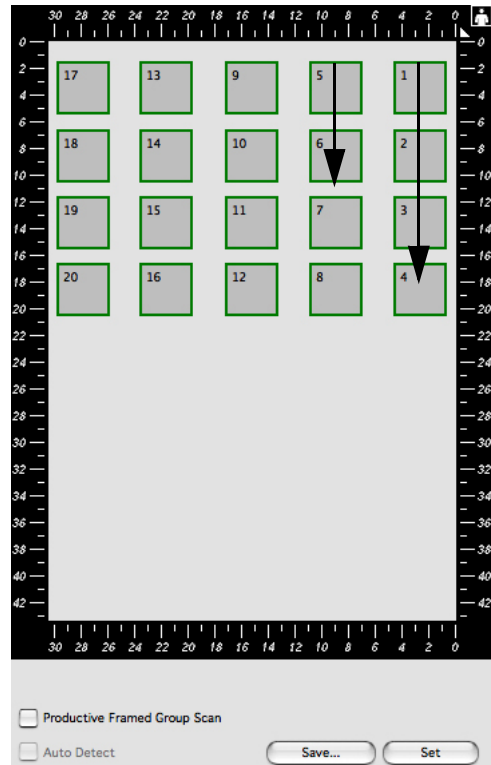
Feature Details

Numbered Mask Display

Numbers appear on the mask display, indicating the order in which the images are scanned.



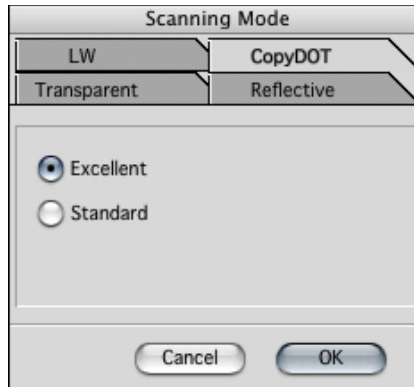
Tip: The recommended scanning order is to start from the top of the right column, downwards, and continuing from the top of the next column to the left.



Removing the Moire Effect in Copydot Scans

To remove the moire effect that appears with screens of more than 175 lpi that have mesh angles of 0 in. and 45 in. use the **Excellent** scanning mode.

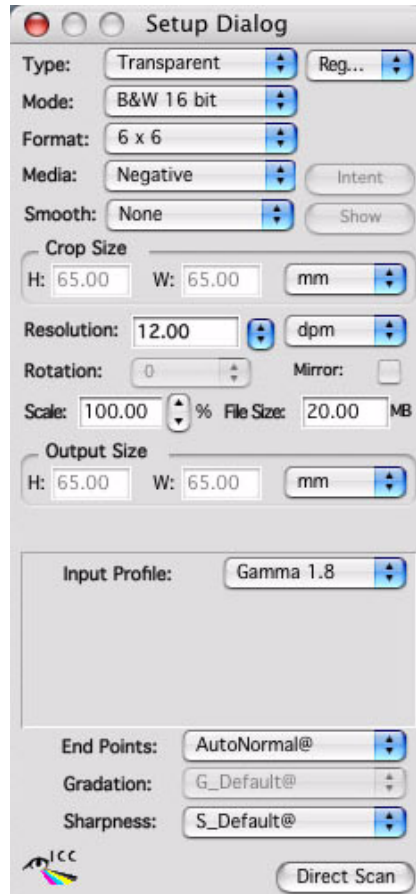
1. On the keyboard, press CMD + L to open the Scanning Mode dialog box.
2. On the **CopyDOT** tab, select **Excellent**.
3. Click **OK**.



16-bit B/W Mode

16-bit B/W is a new scanning mode for scanning B/W images, as well as RGB images, that addresses the ever-increasing need for archival of analog images as digital media. Many analog originals are historical black-and-white negative images. To ensure that these images are preserved digitally, the maximum amount of image information must be captured in digital form.

1. From the **Mode** list, select **B&W 16 bit**.

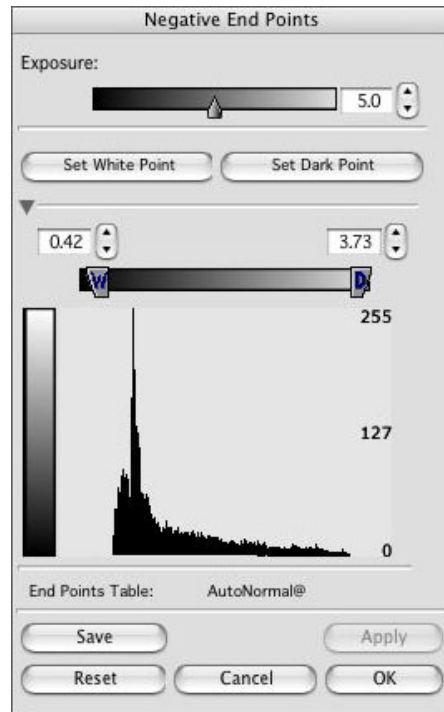


Note: In the Setup dialog box, in the **Media** list, **Negative** is selected. For positives, from the **Media** list, select **Positive**.

2. From the **Input Profile** list, select **Gamma 1.8** or **Gamma 2.2**.

Negative End Points Dialog Box

The Negative End Points dialog box for use in B/W Negative mode has less options than the Negative End Points dialog box used for general purposes.



Producing a Gray Image from a Black-and-white or Color Original

To produce a gray image from a black-and-white or color original, you can use either of the following input profiles:

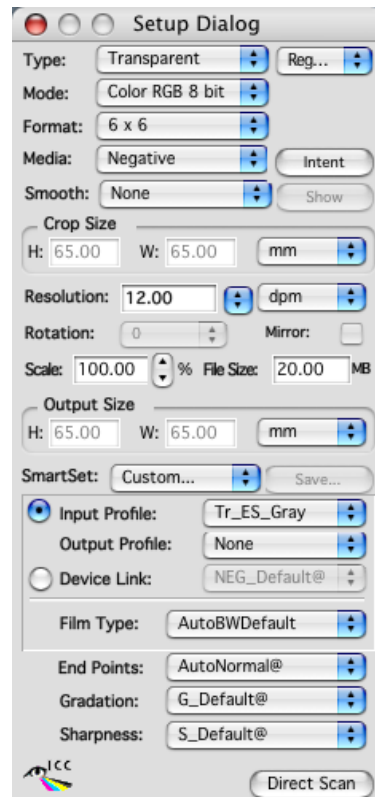
- **Tr_ES_Gray:** For use with transparent originals
- **Ref_ES_Gray:** For use with reflective originals



Note: R, G, and B values may not be equal. The input profile converts these values to grays.

Scanning Black-and-white or Color Negative Originals

In the Setup dialog box, select the following options:



- **Type: Transparent**
- **Mode: Color RGB 16 bit** or **Color RGB 8 bit**
- **Media: Negative**
- **Intent: Balanced**



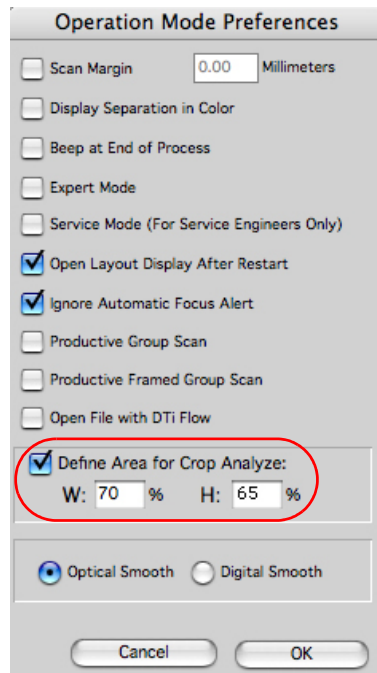
Note: If you are producing a color output, in **Intent** make sure to select **Vivid**.

- **Input Profile: Tr_ES_Gray**
- **Film Type: AutoBWDefault**

Defining a Crop Area for Analysis

You can specify that only part of the crop is used for the crop analysis. If you do not use this option to define a crop area, the default for the crop analysis is 90%.

1. Select **Setup>Operations Modes** or on the keyboard press **CMD+K**.
2. In the Operation Mode Preferences dialog box, select the **Define Area for Crop Analyze** check box.
3. In the **W** box (width or x-axis) and in the **H** box (height or y-axis), enter a value from 40% to 100%.



4. With the Preview window open, press **SHIFT** to display the image area currently designated for crop analysis.

5. Press **SHIFT** and the up and down arrow keys to adjust the area for the crop analysis, if necessary.



6. In the Setup dialog box, click **Apply** to perform the crop analysis.

Using a Naming Convention

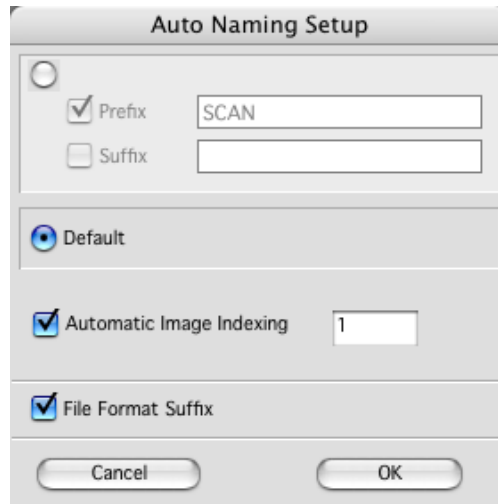
Use the **Automatic Naming Setup** option in *oXYgen* Scan software to assign a prefix, suffix, and indexed numbering to the image files in a collection.

1. From the *oXYgen* menu, select **Setup>Automatic Naming Setup**.
2. To include a prefix:
 - a. In the Automatic Naming Setup dialog box, click the top button.
 - b. Click the **Prefix** check box.
 - c. Enter a prefix.



Note: If you select **Default**, **SCAN** is automatically used as the prefix and **1** as the first number for indexing.

3. To include a suffix:
 - a. Click the top button in the dialog box.
 - b. Click the **Suffix** check box.
 - c. Enter a suffix. The suffix appears after the indexing numbers in the filename (for example, if red is the suffix, then the filename might be house_1_red).
4. To set the first index number for a series of image, select the **Automatic Image Indexing** check box and then enter a number. Other images in the series are automatically numbered sequentially according to this first number (for example, SCAN_1, SCAN_2, and so on).



5. If you want the file format suffix (such as JPEG or TIFF) to appear as part of the filename, click the **File Format Suffix** check box. This is useful if you are intending to use the files on a *Microsoft Windows* system.



Note: In *oXYgen Scan for Scientific Research*, the **File Format Suffix** check box is automatically selected.

Quick Balance in Negative Mode

If you are working in **Negative** mode, you can hide or show the Quick Balance tool in the following ways:

- From the menu, select **Image>Show Quick Balance** or **Image>Hide Quick Balance**
- On the keyboard, press **CMD+N**.

Known Limitations

- The metadata feature is not fully functional.
- If you open a DT file created with an earlier *oXYgen* Scan version, you must use input profiles from an earlier *oXYgen* Scan version.
- After you manually adjust cast factors, you must quit and restart the *oXYgen* Scan software.
- **Rotate** is disabled for all Line Art scans (such as Bitmap, De-screen).
- **Auto Detect** does not support the **Delete Crop** and the **Duplicate Crop** options.
- When you work with DT files, you can use up to a maximum of 24 characters in a file name (including the suffix).
- The toning curve that results from the scan of a DT file that includes crop analysis, is used by the DT Toning plugin with *Adobe Photoshop* software; however, if you open the DT file with *oXYgen* software, a new toning curve is automatically created based on the current value in the Operation Mode Preferences dialog box, in the **Define Area for Crop Analyze** box.
- With *oXYgen* Scan, you can use file names of no more than 29 characters.
- File size and scaling should not be changed in the Setup dialog box when scanning in Copydot mode.
- If *oXYgen* Scan software crashes while you are working, in order for the software to open correctly for the next user, you must login again, and then quit.
- Scanner *FireWire* driver is not compatible with Leaf digital camera backs
- If you click **Abort Scan** and then quit the software, turn the scanner off and then on again.
- You can scan files to a maximum size of 4 GB (64,000 pixels x 64,000 pixels).
- LAB densitometer does not function consistently.
- In Input Grey Levels, settings you save in the input profile are not always correct.

Free Manuals Download Website

<http://myh66.com>

<http://usermanuals.us>

<http://www.somanuals.com>

<http://www.4manuals.cc>

<http://www.manual-lib.com>

<http://www.404manual.com>

<http://www.luxmanual.com>

<http://aubethermostatmanual.com>

Golf course search by state

<http://golfingnear.com>

Email search by domain

<http://emailbydomain.com>

Auto manuals search

<http://auto.somanuals.com>

TV manuals search

<http://tv.somanuals.com>