



Steps to configure  
Linksys - PAP2 Analog Telephone Adaptor

# Configuration Guide



**LINKSYS**<sup>®</sup>  
A Division of Cisco Systems, Inc.

# Overview

This guide shows how to configure Linksys PAP2 Analog Telephone Adaptor (ATA) so you can use the Owtalk service. But first you must be an Owtalk subscriber.

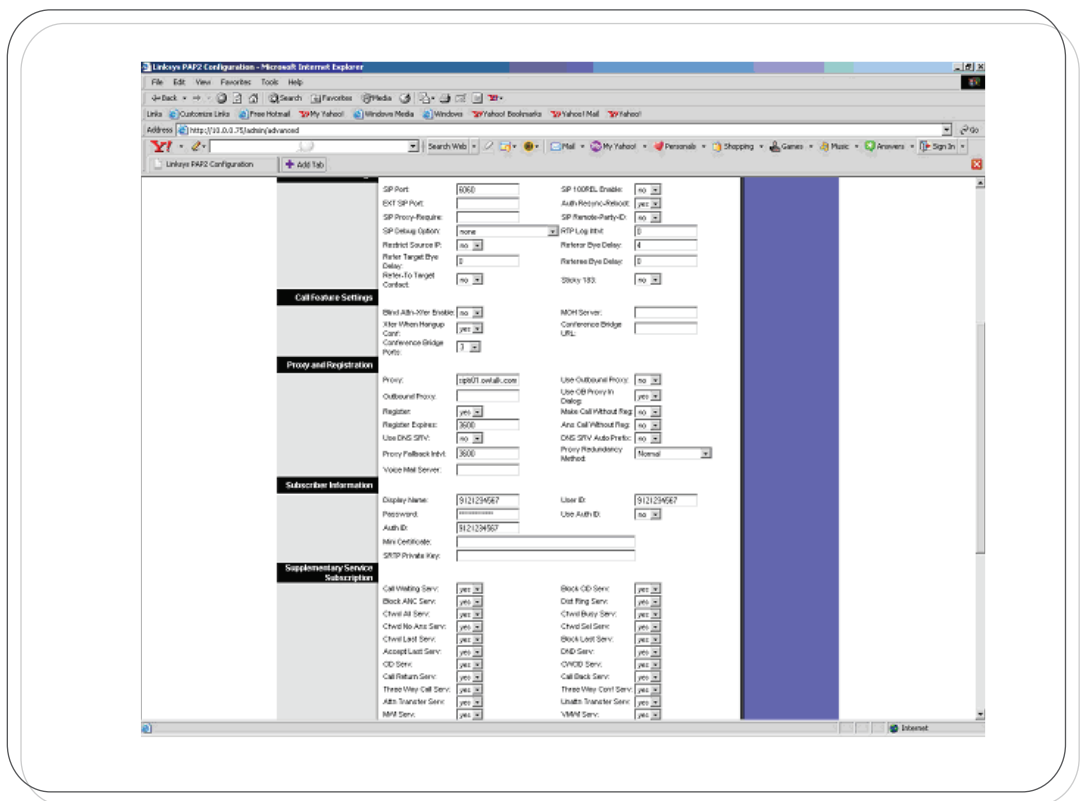
Linksys ATA can be available in preconfigured mode, labeled as Owtalk Preconfigured on the surface of the packaging box. Under the preconfigured mode, all Owtalk SIP account information are pre-programmed, you don't need to go through the following procedures. Please refer to Appendix A on how to activate an Owtalk preconfigured device.

## Steps to self-configure Linksys ATA

- 1** Sign up for Owtalk at <http://www.owtalk.com> to get your self-configuration information for Linksys ATA.
- 2** Plug the power cord and connect the WAN port on the back of the ATA to your cable/ADSL modem, router, or broadband Internet connection.
- 3** The factory default network setting of most of the ATA is set as DHCP mode, i.e. the device obtains the IP address automatically from the network. Follow the steps below if your ATA is in DHCP mode. Otherwise please refer to the device user manual on how to configure your device to connect to a LAN or Internet under Static IP or PPPoE mode.
- 4** To obtain the IP address of the Analog Telephone Adaptor PAP2, press **110#** on your traditional landline phone after connected to the adaptor to get your IP address.

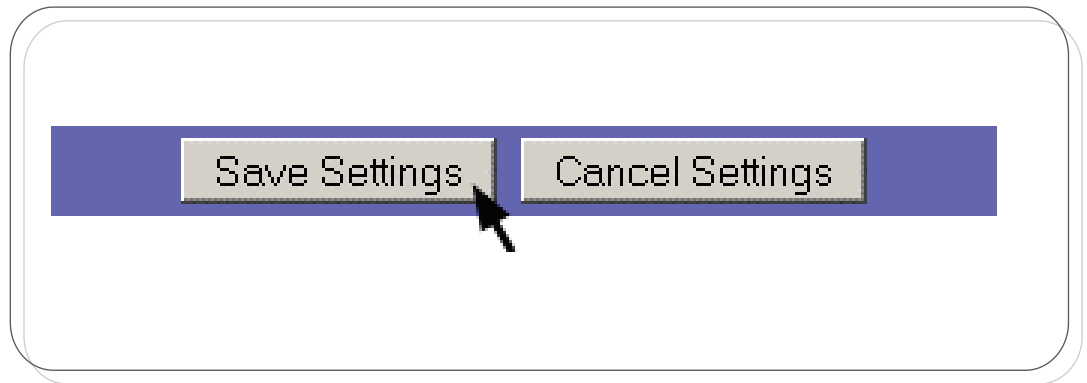


- 5 Open Internet Explorer (or any other) web browser on your computer. Enter the IP address of the ATA in the address field. For example, if it is 192.168.0.109, please type **http://192.168.0.109** in the address field.
- 6 A login screen will appear. Leave the User Name Field blank. Enter **admin** in the Password field. Then click **OK** button.
- 7 Click **Line 1** to enter the SIP Configuration. The configuration information is available in the self-configuration tab in Owtalk after sign-up or click **View SIP Account Configuration** in Owtalk **My Account** page.
  - Fill in the 10-digits Owtalk SIP User Name in the field of Display Name, User ID and Auth ID.
  - Fill in the Owtalk SIP Password in the field of Password.
  - Fill in the Owtalk SIP Proxy/Server in the field of Proxy.



**8** The SIP port number is set at **6060**. For the remaining tabs, you can accept the default settings, or you change them to suit your setup.

**9** Click **Save Settings** to enable the settings.



**10** After the ATA set up procedure is complete, the device is ready for use and you can now receive and make outgoing calls.

# Appendix A

## Owtalk Preconfigured Linksys ATA

To activate your Owtalk preconfigured device, you need to obtain an activation number. Go to **My Account** after sign-up for Owtalk at <http://www.owtalk.com>. Press **Port to Preconfigured** and click **Next** to get the activation number.

Simply dial the activation number after connecting your ATA to your cable/ADSL modem, router, or broadband Internet connection. Your ATA is then all set and ready for use.

Welcome to Owtalk owtalk1004 Owtalk Credit balance \$0.01 ([Add Credits](#)) | [My Account](#) | [Logout](#)


**Owtalk**

[Owtalk Home](#) [Owtalk Out](#) [Owtalk In](#) [Owtalk VAS](#) [Tell a Friend](#) [Store](#) [Partners](#)

**My Account**

- Buy Owtalk Credit
- Buy Owtalk In Number
- Buy Owtalk Voicemail
- Call Record
- Call Forwarding
- Owtalk for Business
- View Your Order History
- Account Settings
  - Change Web Password
  - Change SIP Password
  - Change Email Address
  - Change Currency Display
- My Monthly Purchase Limits
- Owtalk Directory
  - Owtalk Out
  - Owtalk In
  - Owtalk VAS
  - Owtalk Store
- Logout

### Port to Preconfigured

 owtalk1004, your activation number is 005677288. Dial this number from your Preconfigured device.

[My Account](#) → Port to Preconfigured

**I have an Owtalk Preconfigured Device and wish to activate it**

When you activate your Owtalk Preconfigured Device, your Owtalk number and SIP Account information will be replaced with that of your new device.

## Free Manuals Download Website

<http://myh66.com>

<http://usermanuals.us>

<http://www.somanuals.com>

<http://www.4manuals.cc>

<http://www.manual-lib.com>

<http://www.404manual.com>

<http://www.luxmanual.com>

<http://aubethermostatmanual.com>

Golf course search by state

<http://golfingnear.com>

Email search by domain

<http://emailbydomain.com>

Auto manuals search

<http://auto.somanuals.com>

TV manuals search

<http://tv.somanuals.com>