

The official seal is your assurance that this product is licensed or manufactured by Nintendo. Always look for this seal when buying video game systems, accessories, games and related products.



Ce sceau officiel est votre garantie que le présent produit est agréé ou manufacturé par Nintendo. Recherchez-le toujours quand vous achetez des appareils de jeu vidéo, des accessoires, des jeux et d'autres produits apparentés.

El sello oficial es tu ratificación de que este producto está autorizado o ha sido fabricado por Nintendo. Busca siempre este sello al comprar sistemas de videojuegos, accesorios, juegos y otros productos relacionados.

### Product recycling information:

visit [recycle.nintendo.com](http://recycle.nintendo.com)



### Information sur le recyclage des produits :

Visitez : [recycle.nintendo.com](http://recycle.nintendo.com)

### Información sobre reciclaje de productos:

Visita [recycle.nintendo.com](http://recycle.nintendo.com)

### NEED HELP WITH INSTALLATION, MAINTENANCE OR SERVICE?

Nintendo Customer Service

[SUPPORT.NINTENDO.COM](http://SUPPORT.NINTENDO.COM)

or call 1-800-255-3700

### BESOIN D'AIDE POUR L'INSTALLATION, L'ENTRETIEN OU LA RÉPARATION?

Service à la clientèle de Nintendo

[SUPPORT.NINTENDO.COM](http://SUPPORT.NINTENDO.COM)

ou composez le 1 800 255-3700

### ¿NECESITAS AYUDA DE INSTALACIÓN, MANTENIMIENTO O SERVICIO?

Servicio al cliente de Nintendo

[SUPPORT.NINTENDO.COM](http://SUPPORT.NINTENDO.COM)

o llama al 1-800-255-3700



NINTENDO OF AMERICA INC.  
P.O. BOX 957, REDMOND, WA  
98073-0957 U.S.A.

PRINTED IN CHINA

71909A

Nintendo

MAA-RVL-A-WR-USZ-C0

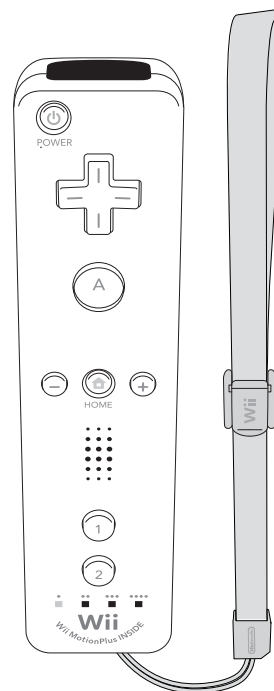
# Wii Remote™ Plus Controller

# Wii™

Operations Manual

Mode d'emploi - page 7

Manual de operaciones - página 13



**PLEASE CAREFULLY READ THE Wii™ OPERATIONS MANUAL COMPLETELY BEFORE USING THIS ACCESSORY. THIS MANUAL CONTAINS IMPORTANT HEALTH AND SAFETY INFORMATION.**

**THE Wii REMOTE™ PLUS CONTROLLER MUST BE SYNCHRONIZED WITH YOUR Wii CONSOLE BEFORE USE. SEE THE Wii OPERATIONS MANUAL FOR COMPLETE INSTRUCTIONS.**

#### **⚠ WARNING - Radio Frequency Interference**

The Wii console and Wii Remote Plus can emit radio waves that can affect the operation of nearby electronics, including cardiac pacemakers.

- Do not operate the Wii console or remote within 9 inches of a pacemaker.
- If you have a pacemaker or other implanted medical device, do not use the Wii console or remote without first consulting your doctor or the manufacturer of your medical device.

#### **⚠ WARNING - Battery Leakage**

Leakage of battery fluid can cause personal injury as well as damage to your remote. If battery leakage occurs, thoroughly wash the affected skin and clothes. Keep battery fluid away from your eyes and mouth. Leaking batteries may make popping sounds.

#### **To avoid battery leakage:**

- Do not mix used and new batteries (replace all batteries at the same time).
- Do not mix different brands of batteries.
- Nintendo recommends alkaline batteries. Do not use Lithium ion, nickel cadmium (nicad), or carbon zinc batteries.
- Do not leave batteries in the Wii Remote Plus for long periods of non-use.
- Do not recharge alkaline or non-rechargeable batteries.
- Do not put the batteries in backwards. Make sure that the positive (+) and negative (-) ends are facing in the correct directions. Insert the negative end first. When removing batteries, remove the positive end first.
- Do not use damaged, deformed or leaking batteries.
- Do not dispose of batteries in a fire.

#### **IMPORTANT SAFETY INFORMATION WHEN USING THE Wii SYSTEM**

Before setup and use of the Wii system, please review this safety information to insure an enjoyable and safe play experience.

#### **1. WEAR THE WRIST STRAP WHEN USING THE Wii REMOTE PLUS CONTROLLER.**

- Make sure all players use the wrist strap and that the strap lock is correctly tightened.
- When sharing Wii Remote accessories between multiple players, make sure each person uses the wrist strap properly.
- Wearing the wrist strap will prevent you from accidentally dropping or throwing the remote during game play, which could damage the remote or surrounding objects, or cause injury to other people.

#### **2. DO NOT LET GO OF THE REMOTE DURING GAME PLAY.**

- Read the Instruction booklet for the game you are playing and follow all game control instructions for correct use of the Wii Remote Plus or accessory controllers.
- Hold the remote securely and avoid excessive motion, as it may cause you to let go of the remote and may break the wrist strap.
- If your hands become moist, stop and dry your hands.

#### **3. ALLOW ADEQUATE ROOM AROUND YOU DURING GAME PLAY.**

- Stay at least three (3) feet away from the television.
- As you may move around during game play, make sure objects and other people are out of your range of movement or arm motion to prevent damage or injury.

#### **4. USE THE Wii REMOTE JACKET.**

#### **Unlicensed Accessories**

Do not attach unlicensed accessories to the Wii Remote Plus, as the use of unlicensed accessories may lead to injury to yourself or others and may cause performance issues and/or damage to the system. Use of any such unlicensed accessories will invalidate your Nintendo product warranty.

NOTE: This product does not contain latex.

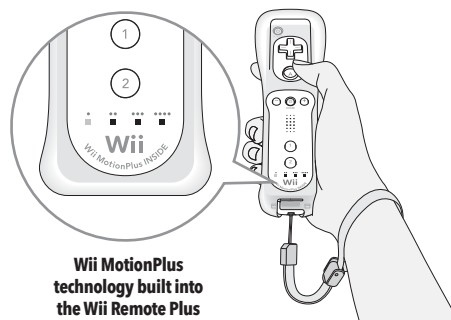
This product complies with applicable laws barring the use of toxic materials such as lead, mercury, cadmium, hexavalent chromium, PBB or PBDE in consumer products.

## Wii Remote Plus Features

The Wii Remote Plus controller incorporates the technology of the Wii MotionPlus™ accessory, allowing more precise and detailed control of gameplay. The Wii Remote Plus is compatible with both standard Wii games and all Wii MotionPlus games, without having to attach the Wii MotionPlus accessory.

- **Some software may require additional accessories.**

**NOTE:** The Wii MotionPlus accessory can be attached to the Wii Remote Plus without damaging it or affecting its operation, **however this is unnecessary and will not provide any additional features or benefit when using the Wii Remote Plus.**



Original Wii Remote controller



Wii Remote Plus controller

- **If the cursor on the TV screen moves even if the Wii Remote Plus is not being moved, or moves differently than when the Wii Remote Plus is moved, the remote may need to be recalibrated due to the following:**

1. Changing batteries in the Wii Remote Plus during gameplay.
2. Moving the Wii Remote Plus from a cold environment into a warm environment.

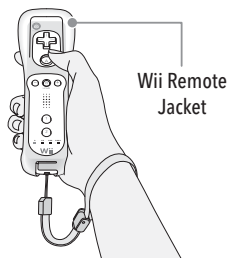
To recalibrate the Wii Remote Plus, place it on a flat horizontal surface with the buttons facing down. **It should be 20" or more from your television and Wii console for correct calibration.** Wait for a few seconds and check the operation. Also, review the instruction manual for the game you are playing for more information.

**NOTE:** This procedure must be done during gameplay.

## Setup of the Wii Remote Plus

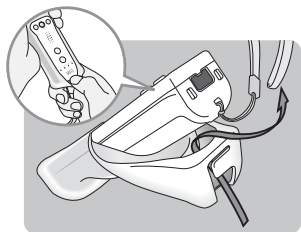
The Wii Remote Plus comes with the Wii Remote Jacket installed.

- **Be sure that the Wii Remote Jacket is installed during gameplay to reduce the risk of harm to the remote, surrounding objects, or people.**
- **It may be necessary to remove the Wii Remote Jacket - for example, to replace the batteries in the Wii Remote Plus. If you do remove the Wii Remote Jacket, be sure to replace it before further play.**

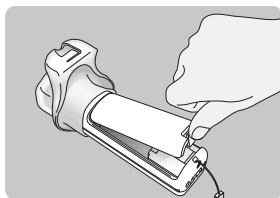


## Installing Batteries

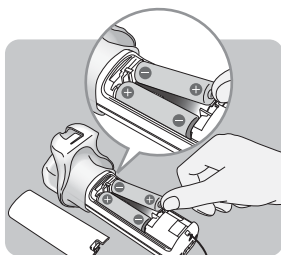
The Wii Remote Plus uses AA batteries. Nintendo recommends high quality alkaline batteries for best performance and longevity of battery life. **If you use rechargeable nickel metal hydride (NiMH) batteries, be sure to follow the manufacturer's guidelines for safety and proper usage.**



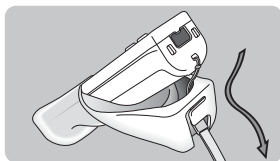
- 1.** Pull the Wii Remote Jacket off the base of the Wii Remote Plus and pull the wrist strap out of the hole in the bottom of the jacket.



- 2.** Pull the jacket up the remote far enough to expose the entire battery door and remove the door.



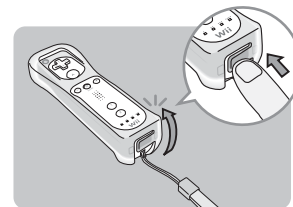
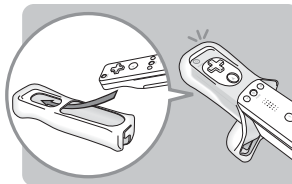
- 3.** Insert the batteries into the battery chamber. Be sure to insert the minus (-) end first when inserting new batteries, and remove the plus (+) end first when replacing the batteries.



- 4. IMPORTANT: If this is the first time you have installed batteries in the Wii Remote Plus, you must synchronize the remote with the Wii console before using it. See the next page, Synchronizing your Wii Remote Plus with the Wii console, for instructions. Then return to Step 4.**

Replace the battery cover, thread the wrist strap through the hole in the bottom of the jacket and pull the jacket back over the bottom of the remote.

## Installing Batteries (continued)

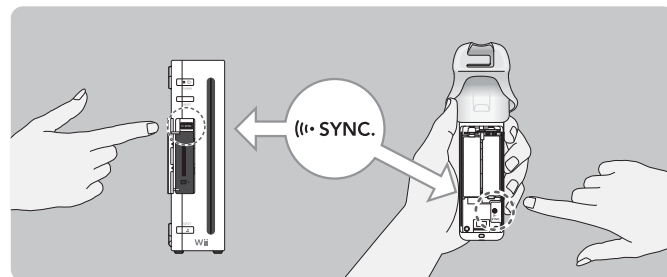


- 5.** If you remove the jacket from the remote, replace it by inserting the top of the remote into the large hole on the front of the jacket. Be sure to push it all the way into the inside of the jacket.

- 6.** Insert the connector cover into the External Extension Connector on the bottom of the remote.

Thread the wrist strap through hole in the bottom of the jacket, as shown in step 4, above.

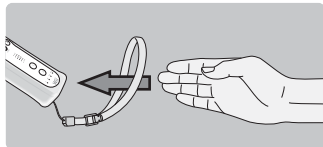
## Synchronizing your Wii Remote Plus with the Wii console



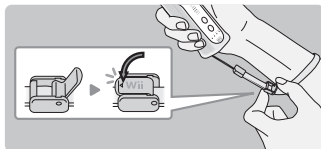
**This procedure must be followed for each additional Wii Remote Plus added to your system.**

- 1.** Press the Power button on the Wii console to turn it on.
- 2.** Remove the battery cover on the back of the remote. Press and release the SYNC button inside the cover. The Player LEDs will blink.
- 3.** Open the SD Card Slot cover on the front of the Wii console. Press and release the SYNC button on the inside of the compartment.
- 4.** When the Player LED blinking stops, connection is complete. The LED that is illuminated indicates the player number.
- 5.** Close the SD Card Slot cover on the front of the Wii console and replace the battery cover on the Wii Remote Plus.

## Wearing the Wii Remote Wrist Strap



**1.** Open the lever on the strap lock and place your hand through the wrist strap. Hold the remote firmly in your hand.



**2.** Slide the strap lock up so that the strap will not fall off your wrist. Do not over tighten the strap lock so that it's uncomfortable. It should just be tight enough to hold the wrist strap in place. Close the lever to hold the strap lock in place.

## FCC and Industry Canada Information

### Regulations for Equipment Use in U.S.A. and Canada

This device complies with Part 15 of the FCC rules and RSS-210 of Industry Canada. Operation is subject to the following two conditions: (1) this device may not cause harmful interference, and (2) this device must accept any interference received, including interference that may cause undesired operation. Changes or modifications not expressly approved by the manufacturer could void the user's authority to operate this device.

This equipment has been tested and found to comply with the limits for a Class B digital device, pursuant to part 15 of the FCC Rules. These limits are designed to provide reasonable protection against harmful interference in a residential installation. This equipment generates, uses and can radiate radio frequency energy and, if not installed and used in accordance with the instructions, may cause harmful interference to radio communications. However, there is no guarantee that interference will not occur in a particular installation. If this equipment does cause harmful interference to radio or television reception, which can be determined by turning the equipment off and on, the user is encouraged to try to correct the interference by one or more of the following measures:

- Reorient or relocate the receiving antenna.
- Increase the separation between the equipment and receiver.
- Connect the equipment into an outlet on a circuit different from that to which the receiver is connected.
- Consult the dealer or an experienced radio/TV technician for help.

The term IC before the certification/registration number only signifies that the Industry Canada technical specifications were met.

## Warranty and Service Information

Rev. R

**You may need only simple instructions to correct a problem with your product. Try our web site at [support.nintendo.com](http://support.nintendo.com) or call our Consumer Assistance Hotline at 1-800-255-3700, rather than going to your retailer.** Hours of operation are 6 a.m. to 7 p.m., Pacific Time, Monday - Sunday (times subject to change). If the problem cannot be solved with the troubleshooting information available online or over the telephone, you will be offered express factory service through Nintendo. Please do not send any products to Nintendo without contacting us first.

### HARDWARE WARRANTY

Nintendo of America Inc. ("Nintendo") warrants to the original purchaser that the hardware product shall be free from defects in material and workmanship for twelve (12) months from the date of purchase. If a defect covered by this warranty occurs during this warranty period, Nintendo will repair or replace the defective hardware product or component, free of charge.\* The original purchaser is entitled to this warranty only if the date of purchase is registered at point of sale or the consumer can demonstrate, to Nintendo's satisfaction, that the product was purchased within the last 12 months.

### GAME & ACCESSORY WARRANTY

Nintendo warrants to the original purchaser that the product (games and accessories) shall be free from defects in material and workmanship for a period of three (3) months from the date of purchase. If a defect covered by this warranty occurs during this three (3) month warranty period, Nintendo will repair or replace the defective product, free of charge.\*

### SERVICE AFTER EXPIRATION OF WARRANTY

Please try our web site at [support.nintendo.com](http://support.nintendo.com) or call the Consumer Assistance Hotline at 1-800-255-3700 for troubleshooting information and repair or replacement options and pricing.\*

\* In some instances, it may be necessary for you to ship the complete product, **FREIGHT PREPAID AND INSURED FOR LOSS OR DAMAGE**, to Nintendo. Please do not send any products to Nintendo without contacting us first.

### WARRANTY LIMITATIONS

THIS WARRANTY SHALL NOT APPLY IF THIS PRODUCT: (a) IS USED WITH PRODUCTS NOT SOLD OR LICENSED BY NINTENDO (INCLUDING, BUT NOT LIMITED TO, NON-LICENSED GAME ENHANCEMENT AND COPIER DEVICES, ADAPTERS, SOFTWARE, AND POWER SUPPLIES); (b) IS USED FOR COMMERCIAL PURPOSES (INCLUDING RENTAL); (c) IS MODIFIED OR TAMPERED WITH; (d) IS DAMAGED BY NEGLIGENCE, ACCIDENT, UNREASONABLE USE, OR BY OTHER CAUSES UNRELATED TO DEFECTIVE MATERIALS OR WORKMANSHIP; OR (e) HAS HAD THE SERIAL NUMBER ALTERED, DEFACED OR REMOVED.

ANY APPLICABLE IMPLIED WARRANTIES, INCLUDING **WARRANTIES OF MERCHANTABILITY** AND FITNESS FOR A PARTICULAR PURPOSE, ARE HEREBY LIMITED IN DURATION TO THE WARRANTY PERIODS DESCRIBED ABOVE (12 MONTHS OR 3 MONTHS, AS APPLICABLE). IN NO EVENT SHALL NINTENDO BE LIABLE FOR CONSEQUENTIAL OR INCIDENTAL DAMAGES RESULTING FROM THE BREACH OF ANY IMPLIED OR EXPRESS WARRANTIES. SOME STATES DO NOT ALLOW LIMITATIONS ON HOW LONG AN IMPLIED WARRANTY LASTS OR EXCLUSION OF CONSEQUENTIAL OR INCIDENTAL DAMAGES, SO THE ABOVE LIMITATIONS MAY NOT APPLY TO YOU.

This warranty gives you specific legal rights. You may also have other rights which vary from state to state or province to province.

Nintendo's address is: Nintendo of America Inc., P.O. Box 957, Redmond, WA 98073-0957 U.S.A.  
This warranty is only valid in the United States and Canada.

## Free Manuals Download Website

<http://myh66.com>

<http://usermanuals.us>

<http://www.somanuals.com>

<http://www.4manuals.cc>

<http://www.manual-lib.com>

<http://www.404manual.com>

<http://www.luxmanual.com>

<http://aubethermostatmanual.com>

Golf course search by state

<http://golfingnear.com>

Email search by domain

<http://emailbydomain.com>

Auto manuals search

<http://auto.somanuals.com>

TV manuals search

<http://tv.somanuals.com>