

Tanaka

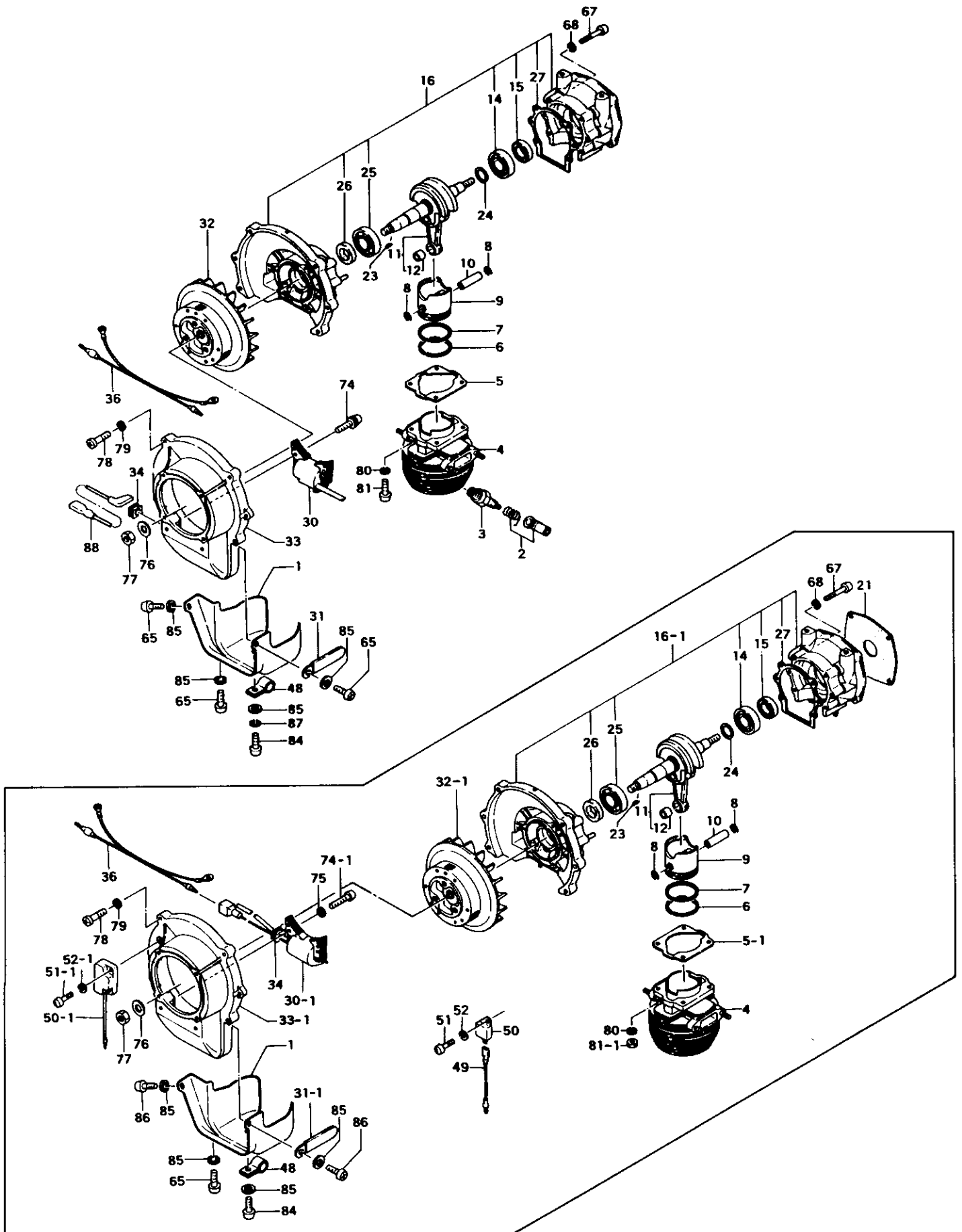
Parts Catalog

Trimmer/Brushcutter

Model: TBC-501

All Units Prior To Serial Number: -J235750

FIG.1 ENGINE

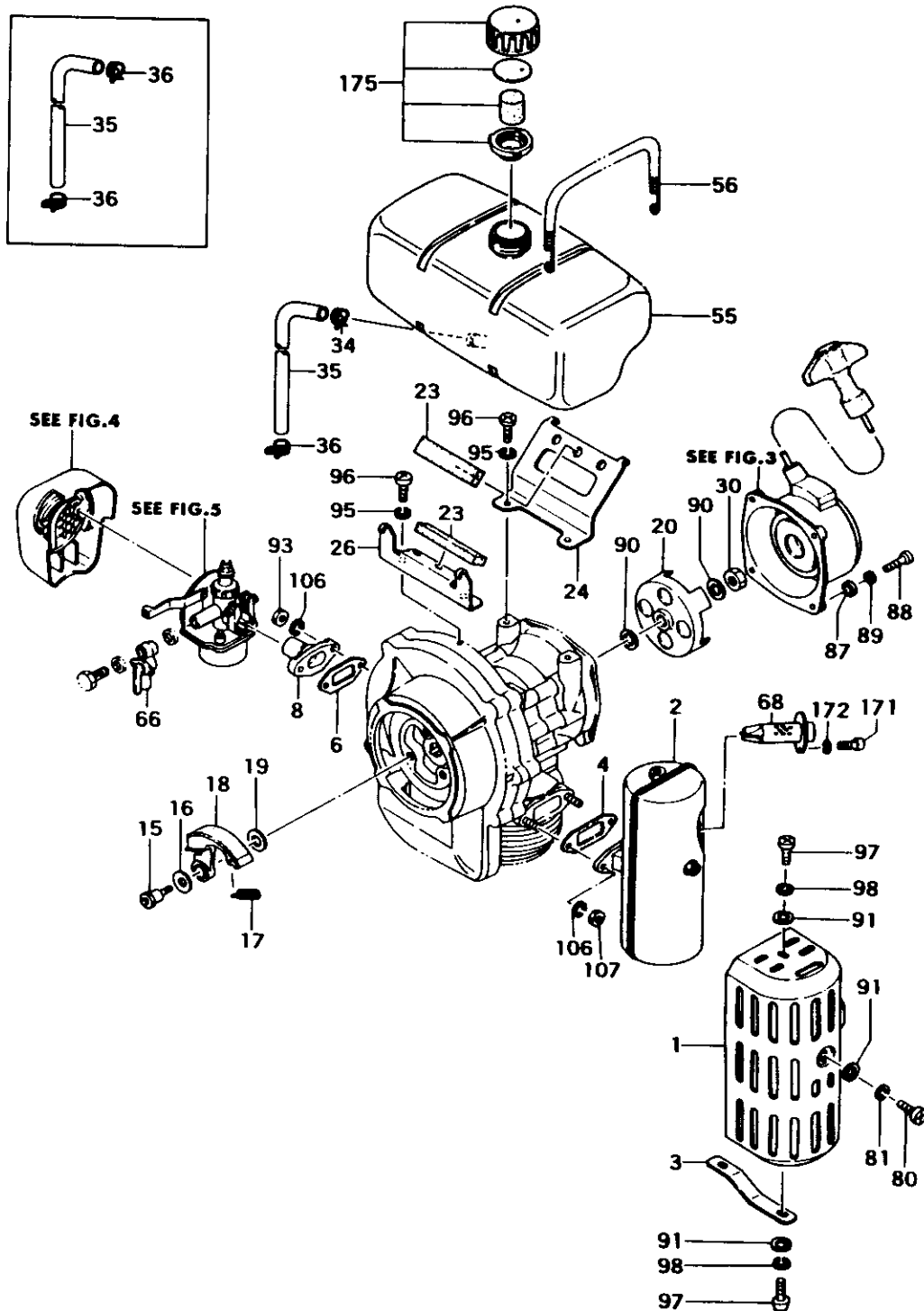


REF. NBR	PART NBR	PART NAME	QTY	SERIAL NBR	REMARKS
1-001	016-10205-210	CYLINDER COVER	1		
1-002	157-04000-900	SPARK PLUG CAP ASS'Y	1		
1-003	018-00502-200	SPARK PLUG BM6A	1		
1-004	002-10200-802	CYLINDER COMP.	1	R -C020116	
1-004	002-10239-800	CYLINDER COMP.	1	-J234750	
1-004	002-10239-801	CYLINDER COMP.	1	P J234751-	
1-005, 1	017-10200-201	CYLINDER GASKET	1	R -E180255	
1-005	017-10200-202	CYLINDER GASKET	1	E180256-	
1-006	040-10100-200	PISTON RING	1		
1-007	041-10100-201	PISTON RING	1		
1-008	039-02000-201	PISTON PIN CIRCLIP	2		
1-009	031-10100-210	PISTON	1		
1-010	037-10100-200	PISTON PIN 10X35	1		
1-011	046-10230-801	CRANK SHAFT COMP.	1	R -B048855	
1-011	046-10230-802	CRANK SHAFT COMP. TTI TYPE	1	-J234750	
1-011	046-10230-810	CRANK SHAFT COMP.	1	N J234751-	
1-012	999-82101-004	NEEDLE BEARING F1010B	1		
1-014	999-81620-200	BALL BEARING #6202, 35MM/OD	1		
1-015	999-86153-000	OIL SEAL 15307	1		
1-016, 1	072-10201-900	CRANK CASE ASS'Y	1	-C048744	
1-016, 1	072-10206-900	CRANK CASE ASS'Y	1	N -E180255	
1-016, 1	072-10241-900	CRANK CASE ASS'Y	1	N -J234750	
1-016	072-10242-910	CRANK CASE ASS'Y	1	N J234751-	
1-021	810-10200-200	RECOIL STARTER GASKET	1	D J234751-	
1-023	068-02000-200	WOOD-RUFF KEY 3X13X5	1		
1-024	071-02007-210	CRANK SHAFT SHIM 0.10	V		
1-024	071-02007-220	CRANK SHAFT SHIM 0.15	V		
1-024	071-02007-230	CRANK SHAFT SHIM 0.20	V		
1-024	071-02007-240	CRANK SHAFT SHIM 0.30	V		
1-025	999-81620-300	BALL BEARING #6203, 40MM/OD	1		
1-026	999-86173-000	OIL SEAL 17307	1		
1-027	090-10200-201	CRANK CASE GASKET	1	I -E180255	
1-027	090-10200-202	CRANK CASE GASKET	1	E180256-	
1-030, 1	167-21508-800	IGNITION COIL COMP.	1	R -C203602	
1-030, 1	167-20751-801	IGNITION COIL COMP.	1	-J234750	
1-030	167-21954-800	IGNITION COIL COMP.	1	N J234751-	
1-031, 1	198-01201-201	CORD CLAMP	1	R -A312360	
1-031	198-01046-900	CORD CLAMP ASS'Y	1	I -J234750	
1-031	198-05015-800	CORD CLAMP COMP.	1	J234751-	
1-032, 1	155-21714-800	MAGNETO ROTOR COMP.	1	R -E249775	
1-032, 1	155-21714-801	MAGNETO ROTOR COMP.	1	-J234750	
1-032	155-21715-801	MAGNETO ROTOR COMP.	1	N J234751-	
1-033, 1	112-10239-200	FAN CASE	1	-J234750	
1-033	112-10239-210	FAN CASE	1	N J234751-	
1-034	202-10200-201	GROMMET	1		
1-036	178-10239-800	STOP CORD COMP.	1	I -A312360	
1-036	178-10239-801	STOP CORD COMP.	1	A312361-	
1-048	198-11109-200	CORD CLAMP L	1		
1-049	173-0075G-800	IGNITOR LEAD WIRE COMP., B75M	1	N E180256-	
1-049	173-0075G-800	IGNITOR LEAD WIRE COMP., B75M	1	D J234751-	
1-050, 1	159-21401-870	IGNITOR COMP. TTI-1D	1	-C203602	
1-050, 1	159-21401-871	IGNITOR COMP. TTI-1E	1	N -E180255	
1-050	159-21401-872	IGNITOR COMP. TTI-1F	1	N E180256-	
1-050	159-21401-872	IGNITOR COMP. TTI-1F	1	D J234751-	
1-051, 1	990-11040-141	SCREW 4X14	2	-E180255	
1-051	990-11040-081	SCREW 4X8	1	N E180256-	
1-051	990-11040-081	SCREW 4X8	1	D J234751-	
1-052, 1	992-10040-012	S. WASHER 4	2	-E180255	
1-052	992-10040-012	S. WASHER 4	1	E180256-	
1-052	992-10040-012	S. WASHER 4	1	D J234751-	
1-065	990-11050-101	SCREW 5X10	1	M	
1-065	990-11050-101	SCREW 5X10	3		
1-067	990-11060-301	SCREW 6X30	4		

- To be cont'd -

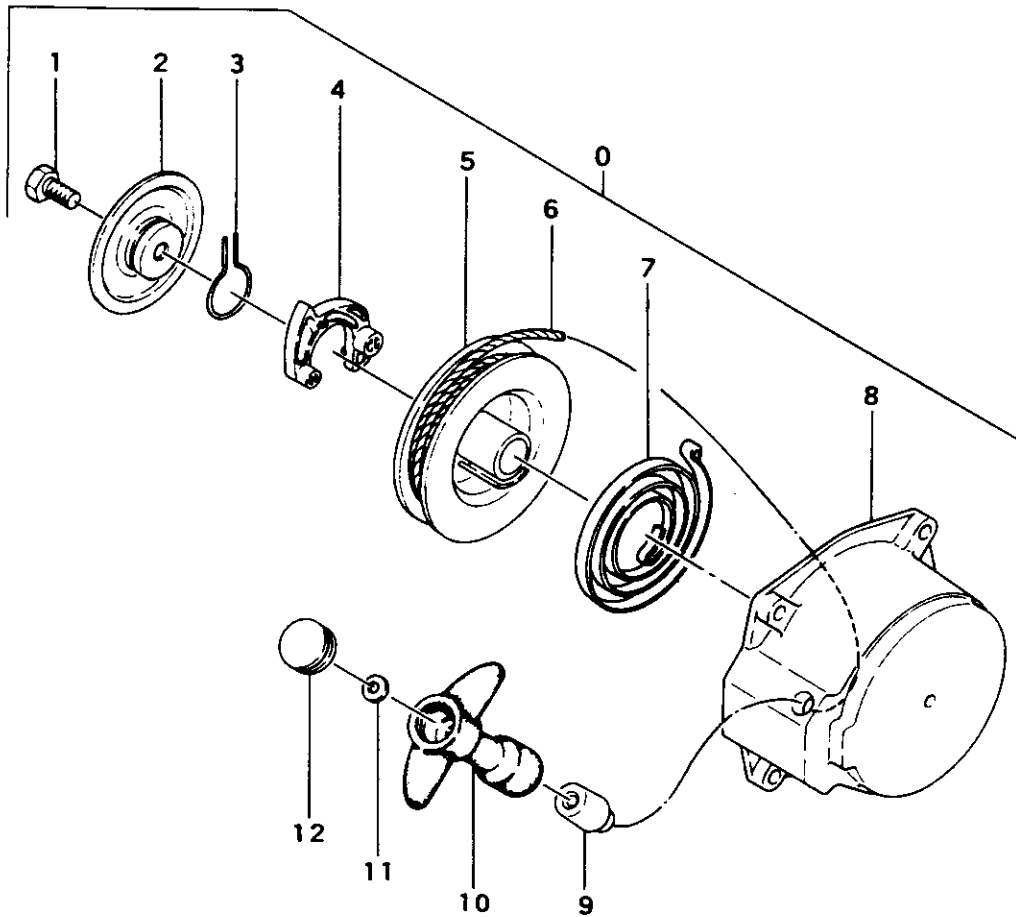
REF. NBR	PART NBR	PART NAME	QTY	SERIAL NBR	REMARKS
1-088	992-11080-012	S.WASHER 6	4		
1-068	992-10080-012	S.WASHER 6	4		
1-074.1	990-11040-181	SCREW 4X18	2		
1-074	994-16040-226	SCREW 4X22/WS	2		
1-075	992-11040-012	S.WASHER 4	2		
1-076	992-00100-011	SMALL WASHER 10	1		
1-076	992-01100-011	WASHER 10	1		
1-077	991-09100-001	NUT 10 (L.H. THREAD)	1		
1-078	990-11080-251	SCREW 6X25	4		
1-079	992-11080-012	S.WASHER 6	4		
1-079	992-10080-012	S.WASHER 6	4		
1-080	992-11080-012	S.WASHER 6	4		
1-080	992-10080-012	S.WASHER 6	4		
1-081.1	991-01080-011	NUT 6	4	-J234750	
1-081	990-11080-181	SCREW 8X18	4	J234751-	
1-084	990-11050-121	SCREW 5X12	1		
1-085	992-01050-011	WASHER 5	4		
1-086	990-11050-121	SCREW 5X12	2	D J234751-	
1-087	992-10050-012	S.WASHER 5	1	N J234751-	
1-088	178-0136M-800	STOP CORD COMP.	1	N J234751-	

FIG.2 ENGINE COMPONENTS



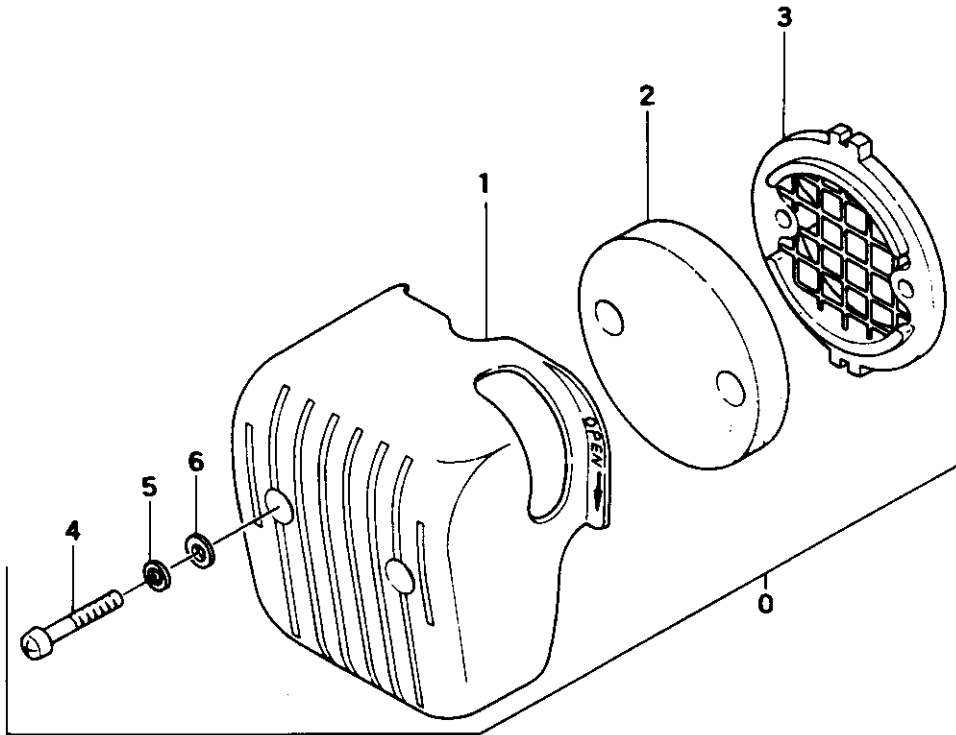
REF. NBR	PART NBR	PART NAME	QTY	SERIAL NBR	REMARKS
2-001	738-10219-200	MUFFLER PROTECTOR	1		
2-002	706-10239-800	MUFFLER COMP.	1	-C048744	
2-002	706-10239-801	MUFFLER COMP.	1	C048745-	
2-003	733-10219-200	MUFFLER STAY	1	-C048744	
2-003	733-10219-201	MUFFLER STAY	1	C048745-	
2-004	737-10100-200	MUFFLER GASKET	1		
2-006	403-02000-201	INLET MANIFOLD GASKET	1		
2-008	393-04001-201	INLET MANIFOLD	1		
2-015	357-02110-202	CLUTCH STEP BOLT	3	-J234750	
2-015	357-10112-204	CLUTCH STEP BOLT	3	M J234751-	
2-016	358-02103-200	WASHER	3	-J234750	
2-016	358-10112-200	CLUTCH WASHER A	3	M J234751-	
2-017	342-01515-200	CLUTCH SPRING	3	-J234750	
2-017	342-10205-220	CLUTCH SPRING	3	M J234751-	
2-018	290-02110-802	CLUTCH ARM COMP.	3	-J234750	
2-018	290-10243-800	CLUTCH ARM COMP.	3	M J234751-	
2-018	338-10243-800	CLUTCH ARM COMP.	3	M J234751-	
2-019	359-02103-200	CLUTCH WASHER B	3	-J234750	
2-019	359-10239-200	2.6 CLUTCH WASHER B	3	M J234751-	
2-020	774-10205-201	STARTER PULLEY	1	M	
2-020	798-10205-200	STARTER PULLEY	1		
2-023	655-10209-201	FUEL TANK CUSHION RUBBER	2		
2-024	653-10239-200	FUEL TANK BRACKET	1		
2-026	654-10219-201	FUEL TANK BRACKET B	1		
2-030	991-09100-003	NUT 10 (L.H.THREAD)	1	M	
2-030	991-11100-013	SMALL NUT 10	1		
2-034	680-10239-200	CLIP	1	M C048745-	
2-035	700-08012-280	FUEL PIPE	1		
2-036	680-02101-200	CLIP	2	-C048744	
2-036	680-02101-200	CLIP	1	C048745-	
2-055	591-10239-200	TANK	1		
2-056	648-01550-215	FUEL TANK BAND	2		
2-066	592-00750-900	PET-COCK ASS'Y	1		
2-068	721-10239-800	TAIL PIPE COMP.	1	-A312360	
2-068	721-10239-801	TAIL PIPE COMP.	1	P A312361-	
2-080	990-11060-081	SCREW 6X8	1		
2-081	992-11060-012	S.WASHER 6	1	M	
2-081	992-10060-012	S.WASHER 6	1		
2-087	992-01050-011	WASHER 5	4	M J234751-	
2-088	990-11050-251	SCREW 5X25	4	-J234750	
2-088	990-11050-181	SCREW 5X18	4	M J234751-	
2-089	992-11050-012	S.WASHER 5	4	M	
2-089	992-10050-012	S.WASHER 5	4		
2-090	801-10205-202	PULLEY WASHER	2		
2-091	992-01060-011	WASHER 6	3		
2-093	991-01060-011	NUT 6	2		
2-095	992-11060-012	S.WASHER 6	4	M	
2-095	992-10060-012	S.WASHER 6	4		
2-096	990-11060-161	SCREW 6X16	4	M	
2-096	990-11060-141	SCREW 6X14	4		
2-097	990-11060-101	SCREW 6X10	2		
2-098	992-11060-012	S.WASHER 6	2	M	
2-098	992-10060-012	S.WASHER 6	2		
2-106	992-11060-012	S.WASHER 6	4	M	
2-106	992-10060-012	S.WASHER 6	4		
2-107	991-01060-011	NUT 6	2		
2-171	990-11040-081	SCREW 4X8	3		
2-172	992-10040-012	S.WASHER 4	3		
2-175	595-0141Y-900	TANK CAP ASS'Y, RED	1	I -A312360	
2-175	595-10239-900	TANK CAP ASS'Y, ORANGE	1	A312361-	

FIG.3 RECOIL STARTER



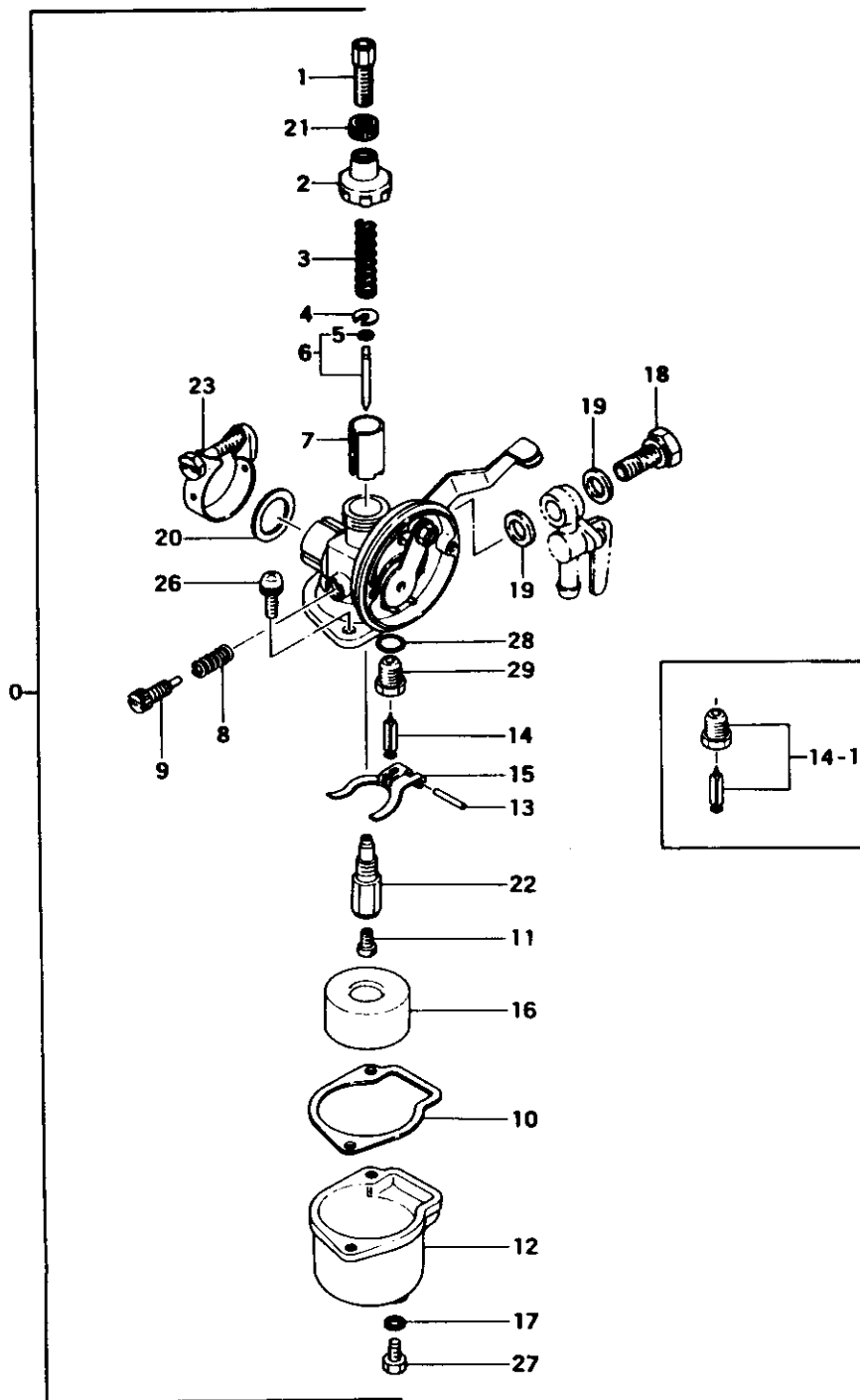
REF. NBR	PART NBR	PART NAME	QTY	SERIAL NBR	REMARKS
3-000	756-10205-900	RECOIL STARTER ASS'Y	1		
3-000	762-10205-900	RECOIL STARTER BODY ASS'Y	1	-J234750	
3-000	762-10244-900	RECOIL STARTER BODY ASS'Y	1	J234751-	
3-001	839-10205-200	SET BOLT	1	-J234750	
3-001	990-21060-121	BOLT 6X12	1	J234751-	
3-002	837-10205-200	FRICTION PLATE	1		
3-003	836-10205-200	FRICTION SPRING	1		
3-004	788-10205-200	STARTER PAWL	1		
3-005	769-10205-800	STARTER ROPE REEL COMP.	1	-J234750	
3-005	774-10246-800	STARTER ROPE REEL COMP.	1	J234751-	
3-006	783-10205-200	STARTER ROPE	1		
3-007	779-10205-200	RECOIL SPRING	1		
3-008	772-10205-200	RECOIL STARTER BODY	1	-J234750	
3-008	772-10244-200	RECOIL STARTER BODY	1	J234751-	
3-009	780-10118-200	ROPE GUIDE	1	-J234750	
3-009	780-10108-200	ROPE GUIDE	1	J234751-	
3-010	785-10118-200	STARTER HANDLE	1		
3-011	992-01040-011	WASHER 4	1	-J234750	
3-011	795-10243-200	ROPE STOPPER	1	J234751-	
3-012	839-10118-200	STARTER HANDLE CAP	1	-J234750	
3-012	835-10246-200	STARTER HANDLE CAP	1	J234751-	

FIG.4 AIR CLEANER



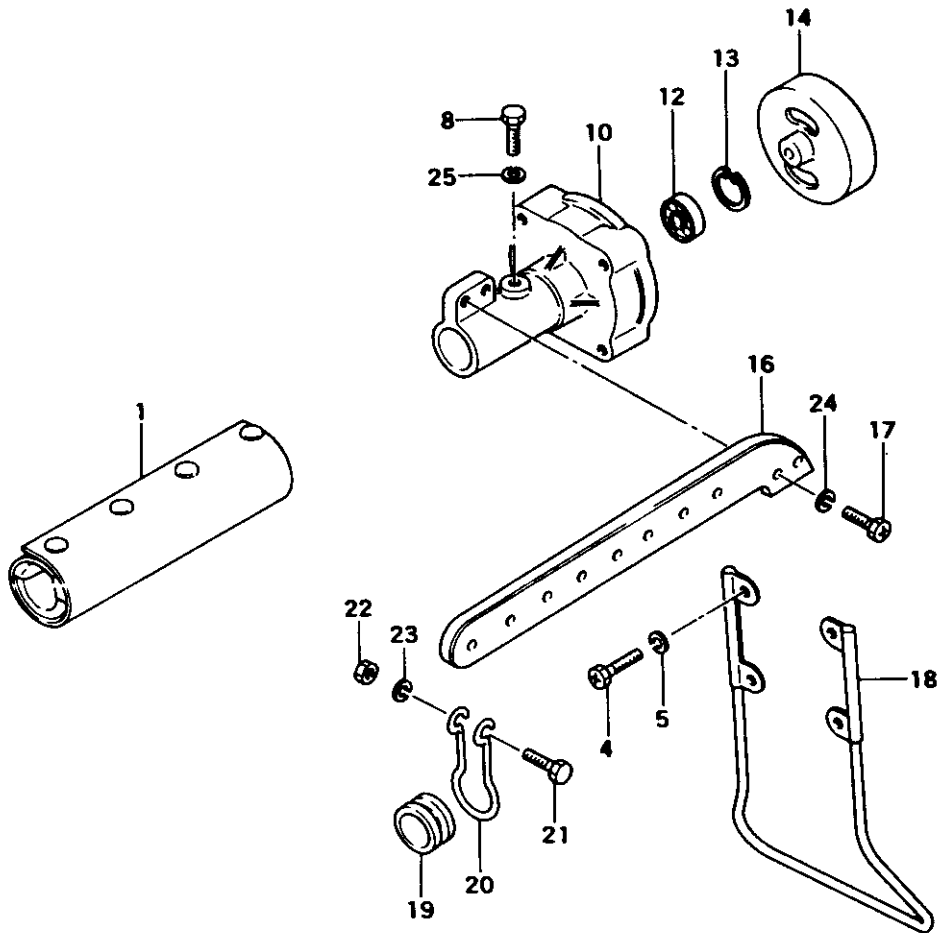
REF. NBR	PART NBR	PART NAME	QTY	SERIAL NBR	REMARKS
4-000	410-01310-900	CLEANER ASS'Y	1		
4-001	423-01310-201	CLEANER BODY	1		
4-002	448-00810-200	CLEANER ELEMENT	1		
4-003	436-00810-211	CLEANER FIXING BASE	1		
4-004	990-11040-251	SCREW 4X25	2		
4-005	992-10040-012	S. WASHER 4	2		
4-006	992-00040-011	SMALL WASHER 4	2		

FIG.5 CARBURETOR



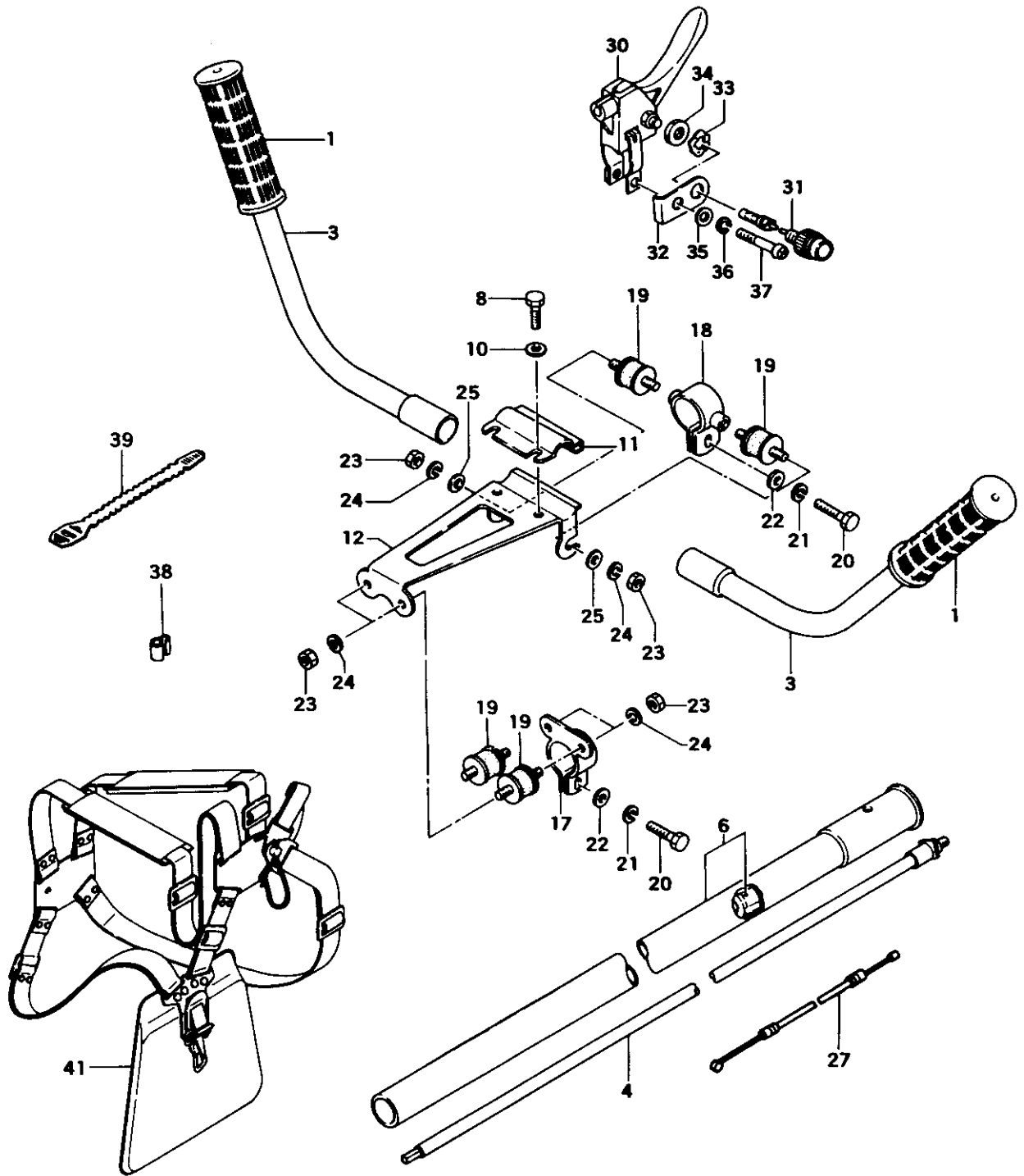
REF. NBR	PART NBR	PART NAME	QTY	SERIAL NBR	REMARKS
5-000	455-20110-900	CARBURETOR ASS'Y	1		
5-001	597-20400-200	CABLE ADJUSTER	1	M	
5-001	597-20110-200	CABLE ADJUSTER	1		
5-002	595-20400-200	BODY CAP	1	M	
5-002	595-20430-200	BODY CAP	1		
5-003	594-20400-200	THROTTLE VALVE SPRING	1	M	
5-003	594-20110-200	THROTTLE VALVE SPRING	1		
5-004	619-20200-200	THROTTLE SPRING RECEIVER	1	M	
5-004	619-20110-200	THROTTLE SPRING RECEIVE	1		
5-005	593-20400-200	JET NEEDLE CLIP	1		
5-006	592-20433-900	JET NEEDLE ASS'Y #004	1	M	
5-006	592-2002T-920	JET NEEDLE ASS'Y 004	1		
5-007	581-20110-200	THROTTLE VALVE	1	M	
5-007	591-2000T-200	THROTTLE VALVE 0.5X1.5	1		
5-008	623-20400-200	ADJUSTER SPRING	1	M	
5-008	623-20110-200	ADJUSTER SPRING	1		
5-009	622-20400-200	ADJUSTER SCREW	1	M	
5-009	622-20110-200	ADJUSTER SCREW	1		
5-010	607-20200-200	FLOAT CHAMBER GASKET	1	M	
5-010	607-20110-200	FLOAT CHAMBER GASKET	1		
5-011	599-20110-262	MAIN JET	1	M	
5-011	599-2001T-640	MAIN JET #64	1		
5-012	606-20400-200	FLOAT CHAMBER	1		
5-013	605-20110-200	FLOAT ARM PIN	1	M	
5-013	605-21700-200	FLOAT ARM PIN	1		
5-014.1	603-20110-900	NEEDLE VALVE ASS'Y	1	M	
5-014	603-20110-200	NEEDLE VALVE	1		
5-015	628-20110-200	FLOAT ARM	1	M	
5-015	628-20202-200	FLOAT ARM	1		
5-016	604-20200-200	FLOAT	1	M	
5-016	604-20110-200	FLOAT	1		
5-017	629-20200-200	DRAIN PLUG GASKET	1		
5-018	501-20110-200	FUEL INLET BOLT	1		
5-019	500-20110-200	FUEL INLET GASKET	2	I	-E180255
5-019	500-21700-200	FUEL INLET GASKET	2		E180256-
5-020	571-20400-200	FLANGE GASKET	1		
5-021	596-20200-200	CABLE ADJUSTER LOCK NUT	1		
5-022	598-20110-200	NEEDLE JET	1	M	
5-022	598-2004T-900	NEEDLE JET 2090	1		
5-023	581-20400-900	BODY BAND ASS'Y	1		
5-026	994-14040-100	SCREW 4X10/S	2	M	
5-026	994-34040-100	SCREW 4X10/S	2		
5-027	627-20200-200	DRAIN SCREW	1		
5-028	550-21700-200	O-RING	1	N	E180256-
5-029	602-20110-200	NEEDLE SEAT	1	N	E180256-

FIG.6 CLUTCH CASE



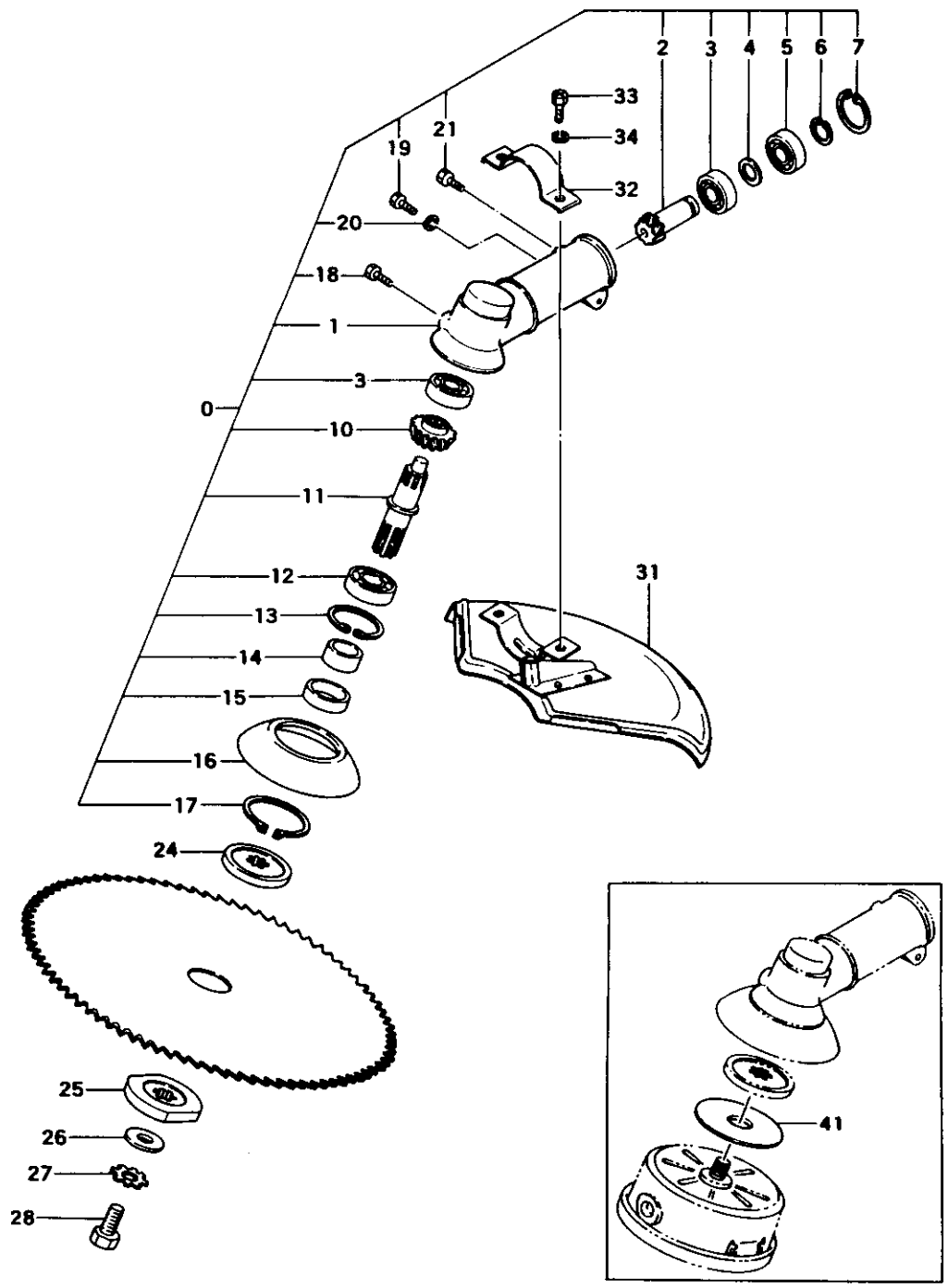
REF. NBR	PART NBR	PART NAME	QTY	SERIAL NBR	REMARKS
6-001	336-33800-800	CUSHION RUBBER COMP.	1	I -C203602	
6-001	336-33800-810	CUSHION RUBBER COMP.	1	C203603-	
6-004	990-23060-351	PLUS BOLT 6X35	4		
6-005	992-10060-012	S.WASHER 6	4		
6-008	990-21060-081	BOLT 6X8	1		
6-010	331-33800-200	CLUTCH CASE	1		
6-012	999-61620-201	BALL BEARING #6202ZZ. 35MM/OD	1		
6-013	993-51035-002	STOP RING C-35 IN	1		
6-014	332-33800-800	CLUTCH DRUM COMP.	1		
6-016	335-33800-200	LIFTING METAL	1		
6-017	990-21060-151	BOLT 6X15	2	I -J234750	
6-017	990-23060-151	BOLT 6X15 W/PLUS	2	J234751-	
6-018	741-33800-800	STAND COMP.	1		
6-019	359-33800-200	DRIVE SHAFT PROTECTOR	1		
6-020	337-33800-200	LIFTING METAL STAY	1		
6-021	990-21060-181	BOLT 6X18	1		
6-022	991-01060-011	NUT 6	1		
6-023	992-10060-012	S.WASHER 6	1		
6-024	992-10060-012	S.WASHER 6	2	D J234751-	
6-025	992-10060-012	S.WASHER 6	1		

FIG.7 HANDLE



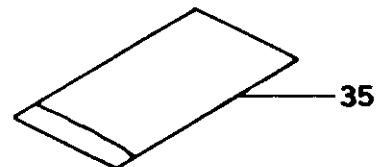
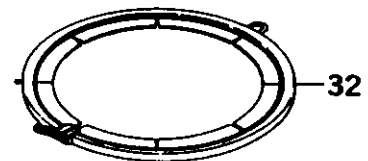
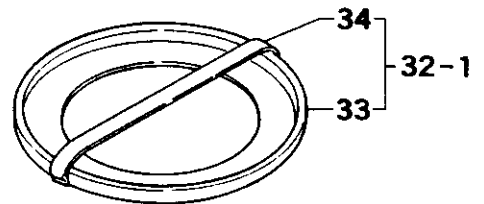
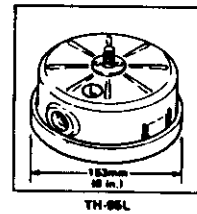
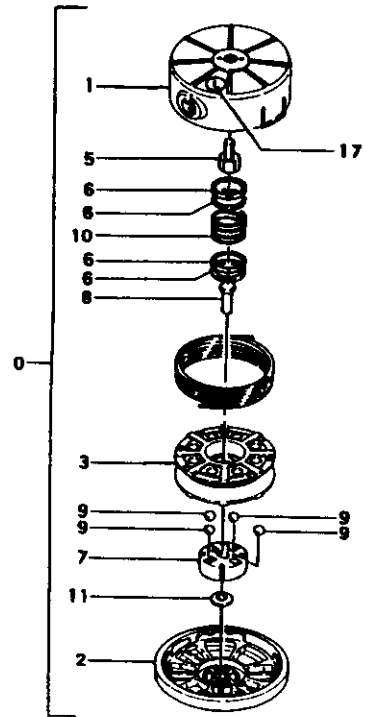
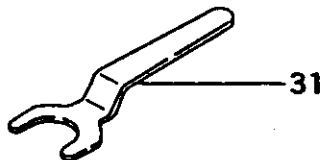
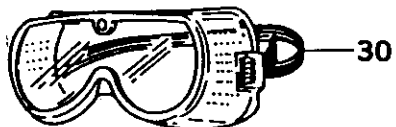
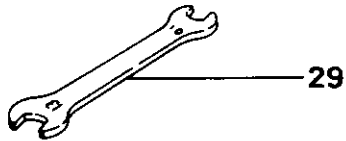
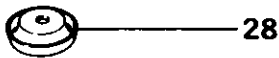
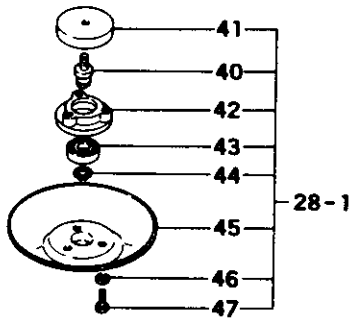
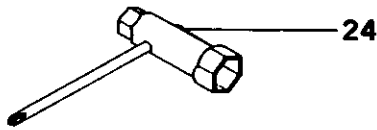
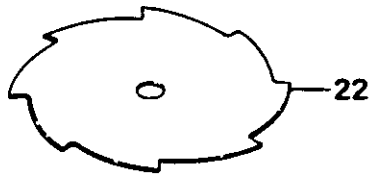
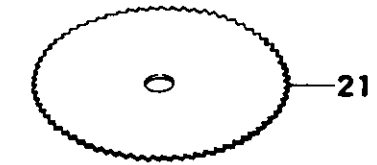
REF. NBR	PART NBR	PART NAME	QTY	SERIAL NBR	REMARKS
7-001	503-33800-200	HANDLE GRIP	2		
7-003	500-33800-200	HANDLE	2		
7-004	343-33800-200	DRIVE SHAFT	1		
7-006	341-33800-800	DRIVE SHAFT PIPE COMP.	1		
7-008	990-21080-251	BOLT 8X25	2		
7-010	992-01080-011	WASHER 8	2		
7-011	506-33800-200	HANDLE BRACKET A	1		
7-012	507-33800-800	HANDLE BRACKET B COMP.	1		
7-017	448-33800-800	STOPPER A COMP.	1		
7-018	449-33800-800	STOPPER B COMP.	1		
7-019	319-33800-800	CUSHION RUBBER COMP	4		
7-020	990-21080-201	BOLT 8X20	2		
7-021	992-10080-012	S.WASHER 8	2		
7-022	992-00080-011	SMALL WASHER 8	2	D	J234751-
7-023	991-01060-011	NUT 6	6		
7-024	992-10060-012	S.WASHER 6	6		
7-025	992-01060-011	WASHER 6	2		
7-027	885-10239-900	THROTTLE WIRE ASS'Y	1		
7-030	870-10239-900	THROTTLE LEVER	1		-A312360
7-030	870-10239-910	THROTTLE LEVER ASS'Y	1	P	A312361-
7-031	170-01004-801	STOP BUTTON COMP.	1		
7-032	640-0062M-200	STOP BUTTON BRACKET	1	I	-D107499
7-032	640-0062M-201	STOP BUTTON BRACKET	1		D107500-
7-033	992-04080-031	WAVE WASHER 8	1		
7-034	180-01004-200	STOP BUTTON FIXING NUT	1	N	J234751-
7-035	992-01050-011	WASHER 5	1		
7-036	992-11050-012	S.WASHER 5	1	M	
7-036	992-10050-012	S.WASHER 5	1		
7-037	990-11050-251	SCREW 5X25	1		
7-038	778-36100-200	CORD CLAMP	3		
7-039	903-32201-200	WIRE CLAMP BAND	2		
7-041	746-33800-900	SHOULDER BELT ASS'Y	1	R	-C100830
7-041	746-33674-901	SHOULDER BELT ASS'Y.DOUBLE W/P	1		C100831-

FIG.8 GEAR CASE



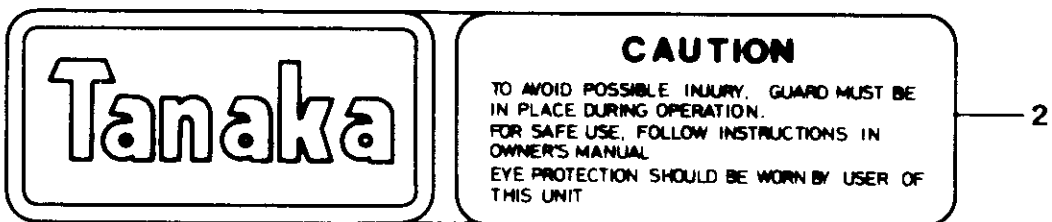
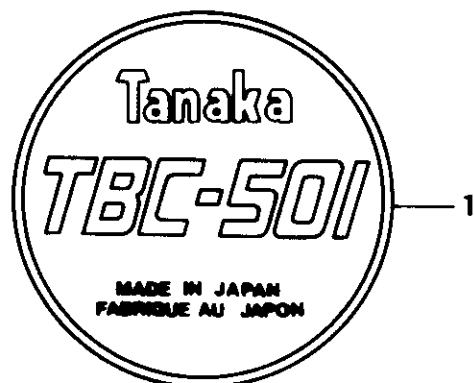
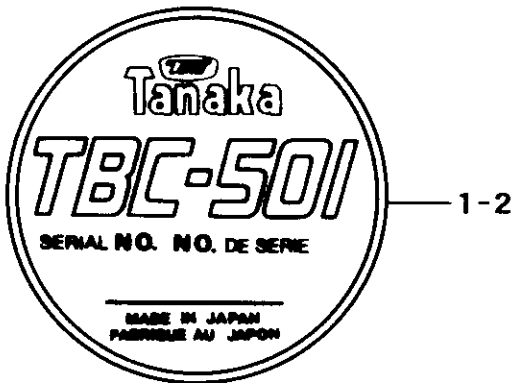
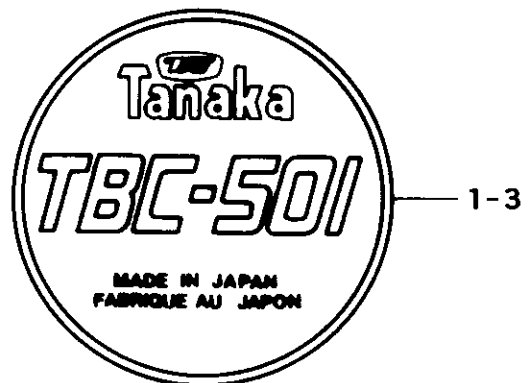
REF. NBR	PART NBR	PART NAME	QTY	SERIAL NBR	REMARKS
8-000	300-33800-900	GEAR CASE ASS'Y	1		
8-001	300-33800-200	GEAR CASE	1		
8-002	302-33800-200	PINION	1		
8-003	999-61600-000	BALL BEARING #6000, 26MM/OD	2		
8-004	320-33800-200	SPACER	1		
8-005	999-61600-002	BALL BEARING #6000Z, 26MM/OD	1		
8-006	993-50010-002	STOP RING C-10 EX	1		
8-007	993-51026-002	STOP RING C-26 IN	1		
8-010	301-33800-200	GEAR	1		
8-011	304-33800-200	GEAR SHAFT	1		
8-012	999-61600-200	BALL BEARING #6002, 32MM/OD	1		
8-013	993-51032-002	STOP RING C-32 IN	1		
8-014	371-33800-200	CUTTER SHAFT SPACER	1		
8-015	999-66223-225	OIL SEAL 22327	1	-J234750	
8-015	999-66223-203	OIL SEAL 22326	1	P J234751-	
8-016	307-33800-200	PROTECTION COVER	1		
8-017	993-50040-002	STOP RING C-40 EX	1		
8-018	990-21080-101	BOLT 8X10	1		
8-019	990-21060-221	BOLT 6X22	1	-J234750	
8-019	990-23060-251	BOLT 6X25	1	N J234751-	
8-020	992-10060-012	S.WASHER 6	1	D J234751-	
8-021	990-21060-101	BOLT 6X10	1	-J234750	
8-021	314-33800-200	SPECIAL BOLT 6X8.5	1	P J234751-	
8-024	310-33800-200	CUTTER HOLDER	1		
8-025	311-33800-200	CUTTER HOLDER CAP	1		
8-026	992-01080-011	WASHER 8	1		
8-027	992-29080-000	TOOTHED LOCK WASHER 8 L/H	1		
8-028	312-33411-200	CUTTER FIXING BOLT/L.H.T.	1	M	
8-028	312-37623-200	FIXING BOLT (L.H. THREAD)	1		
8-031	441-33800-800	SAFETY COVER COMP.	1		
8-032	442-33800-200	COVER BRACKET	1		
8-033	990-23060-201	PLUS BOLT 6X20	2		
8-034	992-10060-012	S.WASHER 6	2		
8-041	320-33670-200	SPACER, NYLON HEAD	1	M	

FIG.9 TOOLS & NYLON HEAD



REF. NBR	PART NBR	PART NAME	QTY	SERIAL NBR	REMARKS
9-000	783-33670-900	NYLON CUTTING HEAD ASS'Y 95L	1	N C203603-	
9-000	783-33670-900	NYLON CUTTING HEAD ASS'Y 95L	1	R -D151595	
9-000	783-33670-910	NYLON HEAD ASS'Y (TH-95L)	1	R -E064290	
9-000	783-33670-911	NYLON HEAD ASS'Y (TH-95L)	1	R -E275599	
9-000	783-33670-912	NYLON HEAD ASS'Y (TH-95L)	1	R E275600-	
9-001	786-33670-800	CUTTING BODY COMP.	1	R -D151595	
9-001	786-33670-810	CUTTING BODY COMP.	1	R -E064290	
9-001	786-33670-811	CUTTING BODY COMP.	1	R -E275599	
9-001	786-33670-812	CUTTING BODY COMP.	1	R E275600-	
9-002	789-33670-200	BODY CAP	1	R -D151595	
9-002	789-33670-210	BODY CAP L	1	R -E275599	
9-002	789-33670-211	BODY CAP L	1	R E275600-	
9-003	787-33670-200	REEL	1	R -D151595	
9-003	787-33670-210	CORD REEL	1	R D151596-	
9-005	314-33670-200	8X1.25 L/H BOLT (GOLD)	1		
9-006	792-33004-200	REEL WASHER	4		
9-007	790-33004-200	REEL SLIDER	1		
9-008	791-33004-200	REEL SLIDER HOOK	1		
9-009	673-35600-200	STEEL BALL 5/16"	4		
9-010	793-33670-200	REEL SPRING	1	R -D151595	
9-010	793-33910-200	REEL SPRING (SILVER)	1	N D151596-	
9-011	358-02103-200	WASHER	1		
9-017	926-33670-200	IDENTIFICATION MARK, L	1	N E275600-	
9-021	809-33441-200	BLADE 80 TEETH 230	1		
9-022	808-33411-200	MOWING BLADE 8 TEETH 255	1	D J234751-	
9-024	826-20000-200	BOX SPANNER 17X19	1	M	
9-024	829-20000-800	COMBI. BOX SPANNER 13X19 .PLUS	1		
9-026	862-20000-200	PLUS DRIVER 4	1	M	
9-028, 1	601-33411-900	FREE WHEELING DISK ASS'Y	1	R -J234750	
9-028	316-33410-200	BOLT PROTECTION COVER	1	N J234751-	
9-029	808-20000-200	SPANNER 10X13	1	D J234751-	
9-030	540-33671-900	GOGGLE ASS'Y	1	N E064291-	
9-031	809-20000-202	SPANNER 41	1	N C203603-	
9-032, 1	615-33411-900	CUTTER COVER ASS'Y	1	N E064291-	
9-032, 1	615-33411-900	CUTTER COVER ASS'Y	1	I -J234750	
9-032	615-33680-200	CUTTER COVER (255MM)	1	R J234751-	
9-033	615-33411-200	CUTTER COVER	1	N E064291-	
9-033	615-33411-200	CUTTER COVER	1	D J234751-	
9-034	616-33411-200	CUTTER COVER BAND	1	N E064291-	
9-034	616-33411-200	CUTTER COVER BAND	1	D J234751-	
9-035	948-39907-200	TOOL BAG	1		
9-040	604-33411-203	DISK FIXING BOLT	1	I -D146125	
9-040	604-33411-204	DISK FIXING BOLT	1	R D146126-	
9-040	604-33411-204	DISK FIXING BOLT	1	D J234751-	
9-041	603-33411-200	FREE WHEELING DISK COVER	1	D J234751-	
9-042	602-33411-200	FREE WHEELING DISK METAL	1	R -C182861	
9-042	602-33411-201	FREE WHEELING DISK METAL	1	P C182862-	
9-042	602-33411-201	FREE WHEELING DISK METAL	1	D J234751-	
9-043	999-61600-204	BALL BEARING #6002DD, 32MM/OD	1	D J234751-	
9-044	993-50015-002	STOP RING C-15 EX	1	D J234751-	
9-045	601-33411-200	FREE WHEELING DISK	1	D J234751-	
9-046	992-10060-012	S. WASHER 6	3	D J234751-	
9-047	990-21060-121	BOLT 6X12	3	M	
9-047	990-21060-151	BOLT 6X15	3	D J234751-	

FIG.10 MARKS



REF. NBR	PART NBR	PART NAME	QTY	SERIAL NBR	REMARKS
10-001,1	906-43801-200	NAME PLATE	1 R	-C048744	
10-001,2	906-43801-210	NAME PLATE	1 R	-C203602	
10-001,3	906-43801-220	NAME PLATE	1 R	-J234750	
10-001	906-43801-221	NAME PLATE	1	J234751-	
10-002	929-33802-200	SYMBOL MARK	1 N	J234751-	

Free Manuals Download Website

<http://myh66.com>

<http://usermanuals.us>

<http://www.somanuals.com>

<http://www.4manuals.cc>

<http://www.manual-lib.com>

<http://www.404manual.com>

<http://www.luxmanual.com>

<http://aubethermostatmanual.com>

Golf course search by state

<http://golfingnear.com>

Email search by domain

<http://emailbydomain.com>

Auto manuals search

<http://auto.somanuals.com>

TV manuals search

<http://tv.somanuals.com>