

## HAVING TROUBLE W/ YOUR SOUND SYSTEM?

### CONDITION

No Sound (power LED off)

Charge Indicator LED off  
No Sound (power LED on)

Shortened Battery Life

Distorted Sound  
Excessive Hum or Noise

### POSSIBLE SOLUTION

- turn POWER switch ON
- charge battery or plug in AC cord
- leave plugged in for 48 hours to repair battery
- check for output from source
- set Internal Speaker switch to ON
- make sure all cables are completely plugged in
- turn up volume control of input used
- remove plug from speaker output if not using external speaker output
- charge battery fully; if battery life continues to deteriorate, contact Anchor Audio customer service: (888) 444-6077
- lower system volume control
- use shielded cables
- use balanced microphone

## HAVING TROUBLE W/ YOUR WIRELESS SYSTEM? (WIRELESS MODELS ONLY)

### CONDITION

No Sound (RX Indicator: ON)

No Sound (RX Indicator: OFF)

### POSSIBLE SOLUTION

- set MUTE switch to on (handheld mic only)
- turn up WIRELESS volume control
- make sure mic is plugged into body pack transmitter
- push mic power button
- turn Acclaim POWER switch on
- make sure transmitter power switch is on
- set receiver and transmitter to same channel
- replace battery in transmitter

## ANCHOR AUDIO CUSTOMER SERVICE

**888/444-6077      310/784-2300**

## ACCLAIM TECHNICAL SPECIFICATIONS

Rated Power Output	22 watts	<i>Sensitivity For Rated Output</i>	
Max SPL @ Rated Power	114 dB @ 1 meter	Lo-Z Microphone	-52 dBV (2.5 mVrms)
Frequency Response	60 Hz - 15 kHz ± 3 dB	Hi-Z Microphone	-43 dBV (7.5 mVrms)
AC Power Requirements	90 - 264 VAC, 50/60 Hz, 50 W max	Auxiliary (line)	-14 dBV (200 mVrms)
Dimensions		<i>Outputs</i>	
Base (HWD)	14 x 22.5 x 13.5" / 35.6 x 57 x 34.3 cm	Line (post fader)	Lo-Z (<1k ohm), buffered, 1/4" phone
Table Top	22.5 x 19" / 57 x 48 cm	Microphone	Lo-Z, balanced, XLR
Weight	30 pounds / 13.6 Kg	Speaker	switched - 8ohm, 1/4" phone unswitched - 4ohm, 1/4" phone
<i>Inputs</i>		<i>ACL-BASE</i>	
Lectern Mic	Lo-Z, balanced, phantom power, XLR	Dimensions (HWD)	30.5 x 21.5 x 18.5" / 77.5 x 54.6 x 47 cm
Auxiliary Mic	Lo-Z, balanced, phantom power, XLR	Weight	38 pounds / 17.2 Kg
Line	Hi-Z, unbalanced, 1/4" phone		

(Specifications subject to change without notice)



**Anchor Audio, Inc.**

Portable Sound Systems

Torrance, California

Download from [www.somanuals.com](http://www.somanuals.com). All Manuals Search And Download.

For Setup & Operation Videos Go To:  
[www.anchoraudio.com](http://www.anchoraudio.com)



## ACCLAIM

### PORTABLE LECTERN SOUND SYSTEM



### OWNER'S MANUAL

### CONTENTS


GETTING STARTED .....	2
CARING FOR YOUR BUILT-IN BATTERIES .....	3
ACCLAIM LECTERN BASIC SYSTEM OPERATION.....	4/5
OPERATING THE BUILT-IN UHF WIRELESS RECEIVER .....	6
ACCLAIM ACCESSORIES .....	6
OPERATING THE WIRELESS MICROPHONE / TRANSMITTER.....	7
HAVING TROUBLE W/ YOUR SOUND SYSTEM? .....	8
ACCLAIM SOUND SYSTEM TECHNICAL SPECIFICATIONS .....	8

100-0163-000/C - 4/09

## A MESSAGE FROM THE OWNER

Thank you for choosing an Anchor Audio portable sound system. Our products incorporate state-of-the-art design and the finest quality of materials and workmanship. We're proud of our products and appreciate the confidence which you have shown by selecting an Anchor system.

I hope you'll take a few minutes to review this manual. We've incorporated several unique features into our products, and your knowledge of how to use them will enhance the performance and your enjoyment of the system.

  
Janet Jacobs - President  
on behalf of all Anchor Employees

## GETTING STARTED

Please check your new unit carefully for any damage which may have occurred during shipment. Each Anchor product is carefully inspected at the factory and packed in specially designed boxes for safe transport.

Notify the freight carrier immediately of any damage to the shipping box or product. Repack the unit in the original box and wait for inspection by the carrier's claim agent. Notify your dealer of the pending freight claim.

**NOTE: All damage claims must be made with freight carrier!**

### RETURNING SYSTEMS FOR SERVICE OR REPAIR

For service or repair, please contact the dealer you purchased your system from or Anchor Audio Customer Service at (888) 444-6077 to obtain a RA (Return Authorization) number. All shipments to Anchor Audio must include an RA number and must be shipped prepaid. C.O.D. shipments will be refused and returned at your expense.

**IMPORTANT: Save the shipping box & packing materials, they were specially designed to ship your unit!**

### WARRANTY REGISTRATION

Visit our website at [www.anchoraudio.com](http://www.anchoraudio.com) and select "Warranty Registration". Complete the online form to activate the six-year limited warranty on your Acclaim lectern sound system and two-year limited warranty for microphones.

## CERTIFICATION

This system conforms to part 74 and part 15 of the FCC rules, contact the FCC office for filling forms.

Frequency Range: 682 MHz - 698 MHz

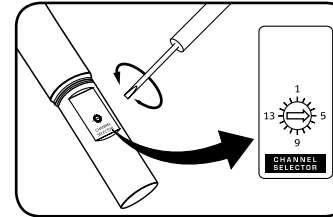
WH-6000EU and WB-6000EU transmitters meet the essential requirements of the European R&TTE Directive 99/5/EC and are eligible to carry the CE marking. CE 0336 !

European Frequency Range: 863.125 MHz - 864.875 MHz

## OPERATING THE WIRELESS MICROPHONE / TRANSMITTER

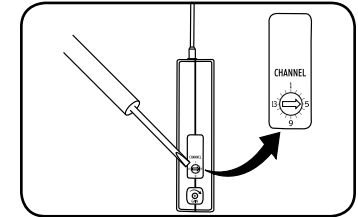
### CHANNEL SELECTION - HANDHELD TRANSMITTER

1. Unscrew battery cover on bottom of microphone
2. Set the CHANNEL SELECTOR dial to match the channel setting of your receiver
3. Replace battery cover and tighten firmly



### CHANNEL SELECTION - BODY-PACK TRANSMITTER

1. The channel selection dial is located on the side of the transmitter
2. Set the CHANNEL selection dial to match the channel setting of the receiver



**NOTE: When using dual wireless, each microphone must be set to a different channel!**

## USING YOUR WIRELESS MICROPHONES

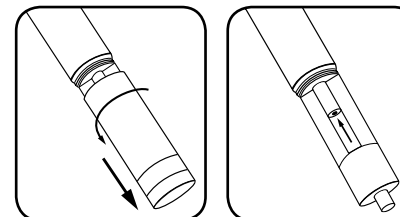
After you have set the transmitter channel (see above) you are ready to use your wireless microphone:

1. Body-pack transmitter users must insert the mic plug into the transmitter jack marked MIC
2. Turn the transmitter power switch to ON  
(The red LED will flash when the mic is turned on. If the red LED stays on, the battery is low)
3. Turn the Acclaim power switch to ON
4. The RX indicators will light (only one indicator will light at a time) when the wireless signal is being transmitted and received

**CAUTION: Harmful feedback may occur when walking in front of a sound system or speaker with a wireless microphone. Always point microphone away from speakers!**

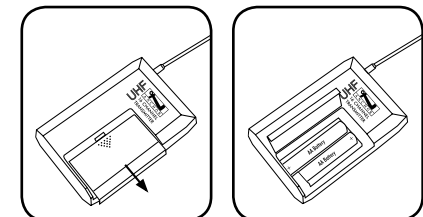
### REPLACE BATTERY - HANDHELD TRANSMITTER

1. Unscrew battery cover on bottom of microphone
2. Replace old batteries with 2 fresh size 'AA' alkaline batteries
3. Replace battery cover and tighten firmly



### REPLACE BATTERY - BODY-PACK TRANSMITTER

1. Slide open battery cover on front of transmitter
2. Replace old batteries with 2 fresh size 'AA' alkaline batteries
3. Replace battery cover by sliding firmly into place



**NOTE: Transmitter power must be OFF when changing batteries!**

## DIVERSITY WIRELESS BY ANCHOR AUDIO

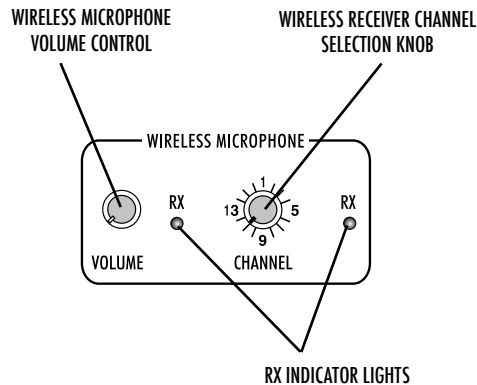
Anchor Audio UHF wireless is a 16 channel, diversity wireless system that receives signals with two independent antennae. With diversity wireless the receiver processes the stronger signal, effectively minimizing dropouts and interference from other transmitting sources. The antennae are mounted internally so there are no obstructions or risk of damage.

### CHANNEL SELECTION - BUILT-IN RECEIVER

Select a channel, set the built-in receiver and microphone transmitter to that channel before using your wireless system.

1. Choose any available wireless channel/frequency from 1 thru 16 (transmitter instructions - page 7)
2. Set the Wireless Channel Selector Knob to the channel/frequency you choose in step 1 above

Remember, to operate the receiver & transmitter pair must be set to the same channels.



**NOTE: Ongoing wireless interference? The frequency you selected may be in use by other systems in the area! Change channels until you find a clear frequency!**

**NEED MORE HELP? View demonstration videos on proper system setup and operation: [www.anchoraudio.com](http://www.anchoraudio.com)**

## ACCLAIM ACCESSORIES

AN-1001X - Companion Speaker  
Unpowered companion speaker (speaker cable not included)

SC-50 - Heavy Duty Speaker Cable  
50' speaker cable, connect AN-1001X to powered Acclaim

SS-550 - Heavy Duty Speaker Stand  
Adjustable stand made of black, anodized aluminum

ACC-BASE - Base for Acclaim  
Acclaim lectern base & traveling case

MIC-90 - Handheld Wired Microphone  
Anchor's dynamic, balanced, low impedance microphone w/ unidirectional pick-up pattern, mic "on/off" switch & 20' cable

## ANCHOR WIRELESS - 16 CHANNEL UHF

WH-6000 - Handheld Microphone/Transmitter  
Wireless transmitter & microphone in one unit

Body Pack Transmitter Microphones:

CM-60 - Collar Microphone  
Lightweight, low-profile mic

EM-60T - UltraLite Microphone  
Hands free "Over-the-Ear" mic

WB-6000 - Body Pack Transmitter  
Works w/ hands free microphones (mic not included)

LM-60 - Lapel Microphone  
Lightweight, clip-on lapel mic

HBM-TA4F - Headband Microphone  
Ultra-lightweight headband mic

## CARING FOR YOUR BUILT-IN BATTERIES

It is very important that you fully charge the batteries in your new sound system before the first time its used. To preserve battery life it is also recommended that batteries be fully charged as soon as possible after every use regardless of the length of operation.

### UNDERSTANDING THE BATTERY LEVEL INDICATOR LIGHT

- |                  |  |
|------------------|--|
| LED Flashing Red | Battery charge is very low, in 15-30 minutes the Battery Protection Circuit will turn the system off |
| LED Off          | Battery is completely drained and must be charged  |

**NOTE: System Can Be Used When Batteries Are Being Charged!**

### OPERATING ACCLAIM IN AC MODE

Plug your sound system into an AC outlet and operate as normal while charging the built-in batteries at the same time. The Charger LED will light during charging and flash when the battery is fully charged.

### BATTERY SERVICE TIME

With the batteries fully charged you can expect approx.:

6-8 hrs @ Medium Volume

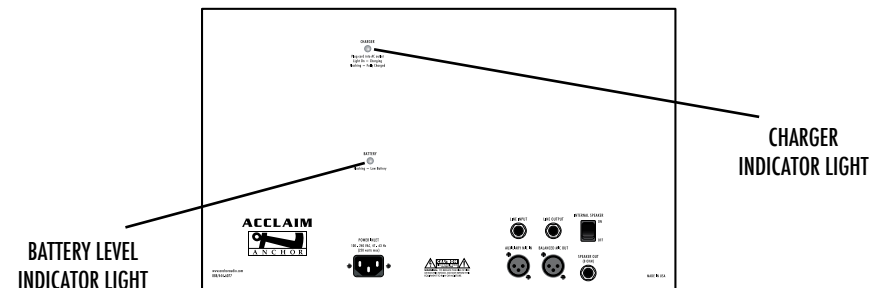
2-4 hrs @ Full Volume

Of continuous music input (longer for speech). However service time will vary depending on control settings and the use of accessories (built-in CD player, wireless receivers and/or a companion speaker).

**IMPORTANT: Always Store Your System w/ Batteries Fully Charged!**

### SYSTEM STORAGE & BATTERIES

Always store your sound system with the batteries fully charged. For extended periods of storage leave the system plugged into an AC outlet. If this is not possible, charge the system at least once each month for a minimum of 24 hours.



## CHARGING YOUR BUILT-IN BATTERIES

An automatic charging system is built-in to your Acclaim Lectern Sound System. It is designed to properly charge and maintain the systems built-in batteries. To charge the batteries:

1. Plug the power cord into your sound system
2. Plug the other end of the cord into AC outlet (Charger LED will stay on during charging)
3. Batteries will be fully charged in approximately 6-8 hrs (Charger LED will flash)

When in AC mode the system automatically transfers power from the battery charger to the power amplifier at high volume output, causing the Charger LED to flicker.

## BASIC SYSTEM OPERATION

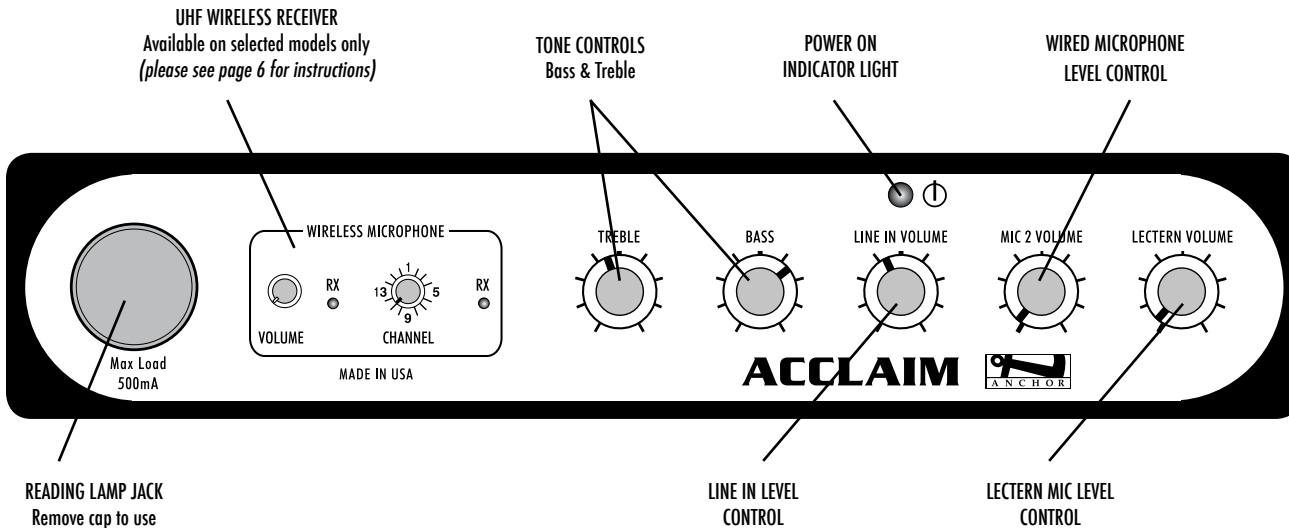
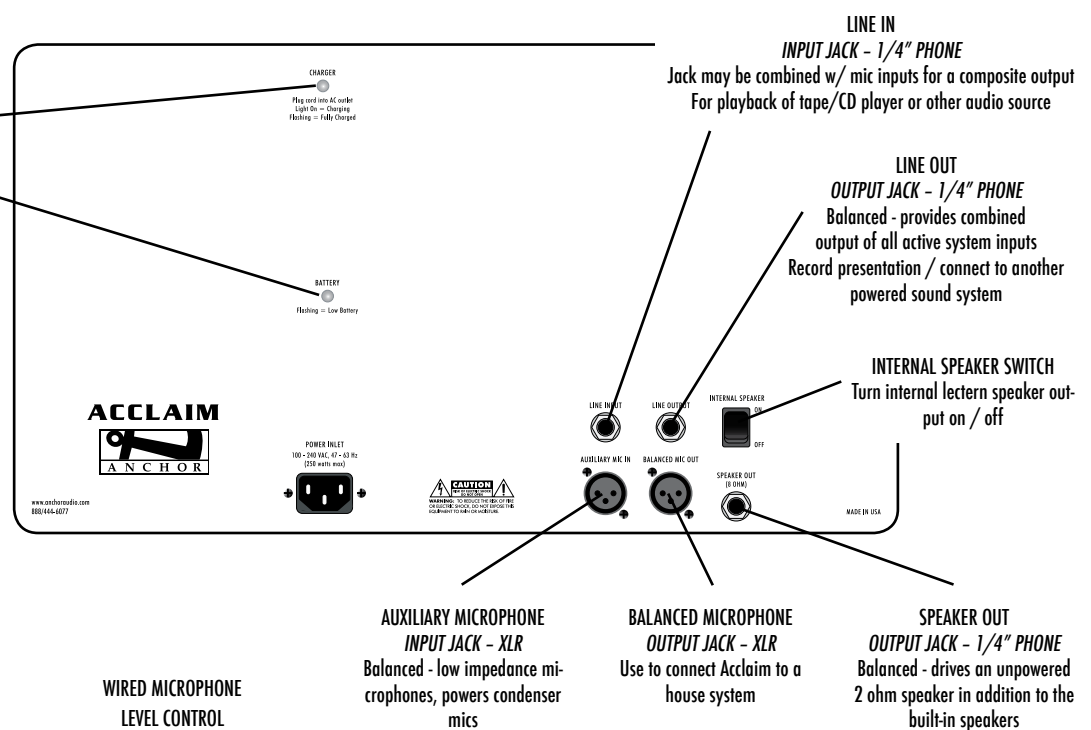
### NOTE: Fully Charge Battery Before First DC Use!

1. Set all Input Level Controls to minimum & Tones Controls to flat (*the middle setting*) before turning your system on
2. Plug lectern gooseneck microphone into the Lectern Mic Jack located on the tabletop
3. Plug reading light into the Reading Lamp Jack on control panel
4. Switch POWER to ON, the BATTERY LED will light
5. Slowly increase the Level Control for the input jacks used to the desired volume
6. Adjust BASS & TREBLE controls to desired sound quality

**IMPORTANT: Make all connections w/ shielded cables to avoid hum, buzzing or interference.**

## ACCLAIM LECTERN - CONNECTION PANEL

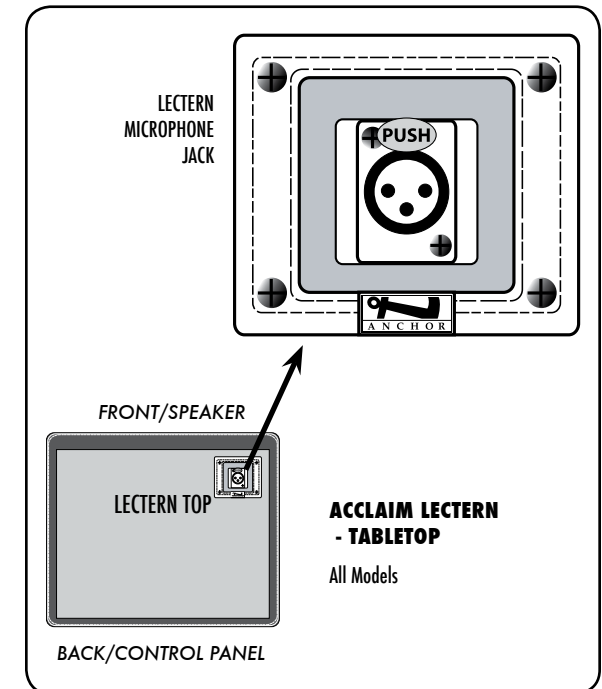
Model Shown: ACL-7500U1



## ACCLAIM LECTERN - CONTROL PANEL

Model Shown: ACL-7500U1

Waste electrical and electronic products must not be disposed of with household waste. Please recycle where facilities exist. Check with your Local Authority or Retailer for recycling advice.



## Free Manuals Download Website

<http://myh66.com>

<http://usermanuals.us>

<http://www.somanuals.com>

<http://www.4manuals.cc>

<http://www.manual-lib.com>

<http://www.404manual.com>

<http://www.luxmanual.com>

<http://aubethermostatmanual.com>

Golf course search by state

<http://golfingnear.com>

Email search by domain

<http://emailbydomain.com>

Auto manuals search

<http://auto.somanuals.com>

TV manuals search

<http://tv.somanuals.com>