

ASUS[®]

Vintage-AE1

Barebone System

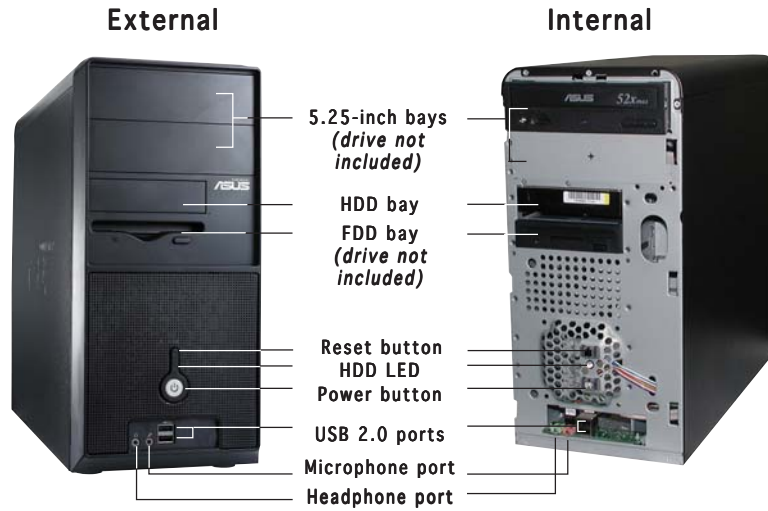
Quick Start Guide



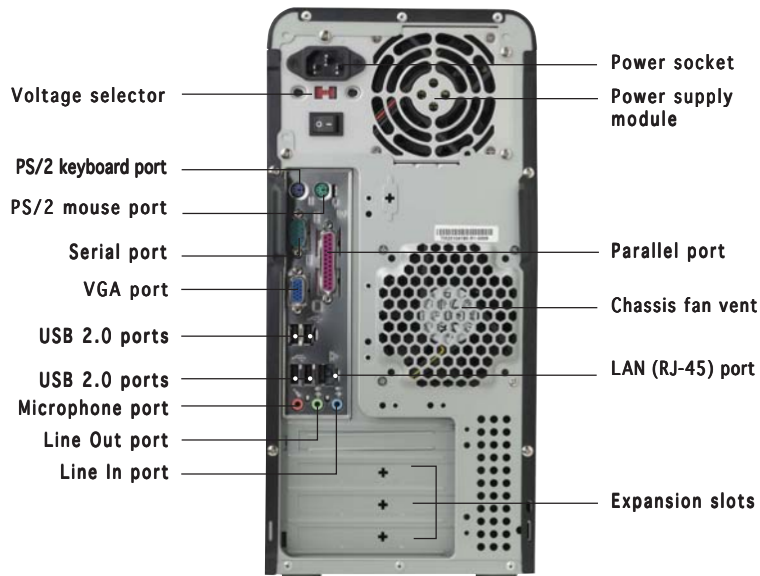
Front panel features



NOTE. The photos in this guide are for reference only. For detailed information on your system's specifications, refer to the user guide.



Rear panel features

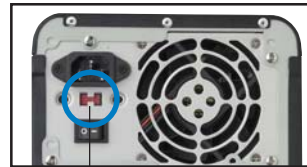


Voltage selector

The switching power supply that came with the system has a voltage selector switch below the power socket. Use this switch to select the appropriate voltage according to the voltage supply in your area.

If the voltage supply in your area is 100-127V, set the switch to 115V.

If the voltage supply in your area is 200-240V, set the switch to 230V.



115V/230V
Voltage selector



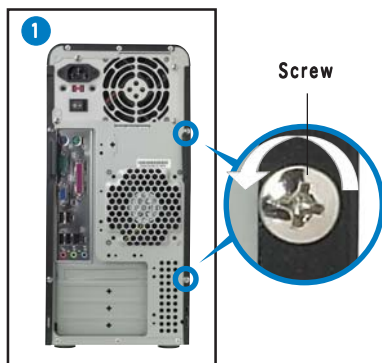
CAUTION. Setting the switch to 115V in a 230V environment will seriously damage the system!

Internal components



- | | |
|---------------------------------|--------------------------|
| 1. PFC power supply | 4. 3.5" HDD drive bay |
| 2. Motherboard | 5. 3.5" Floppy drive bay |
| 3. Two 5.25" optical drive bays | 6. Hard disk drive bays |

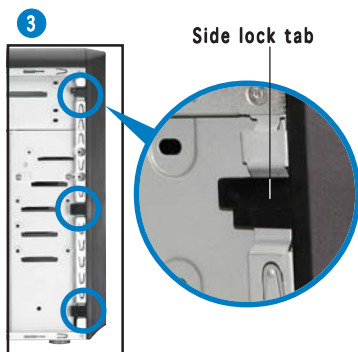
Removing the side plate and front cover



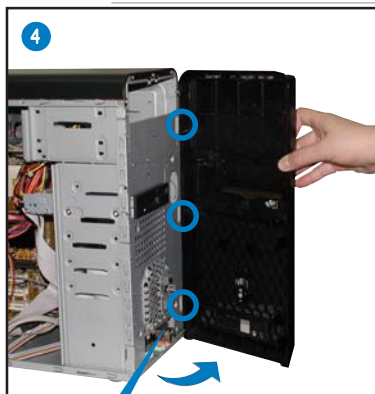
Remove the two screws on the rear panel.



IMPORTANT. Repeat steps 1 and 2 to remove the other side plate.



Release the side lock tabs.



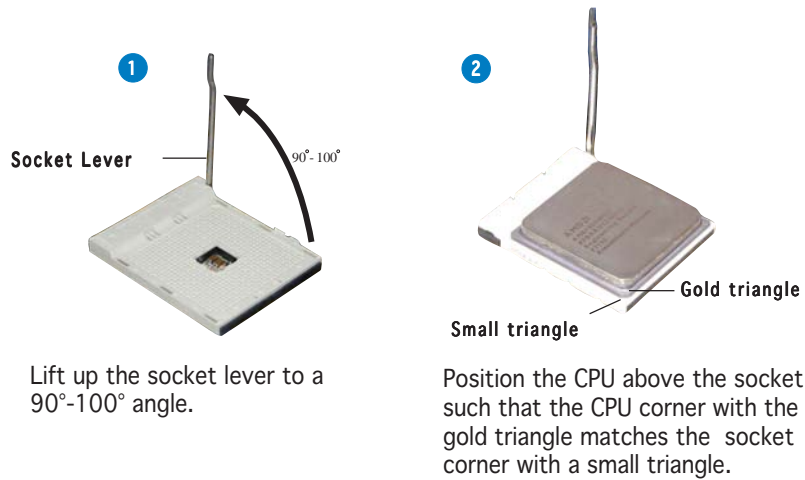
Hinge-like tab

Swing the left edge of the front panel outward, then unhook the hinge-like tabs from the holes on the right side of the front panel.

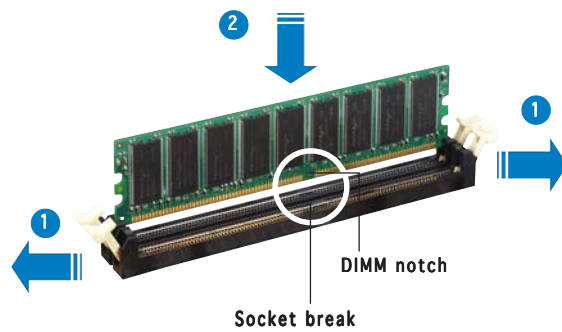
Installing a CPU



CAUTION. Incorrect installation of the CPU into the socket may bend the pins and severely damage the CPU!



Installing system memory

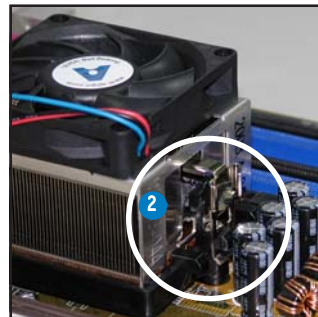
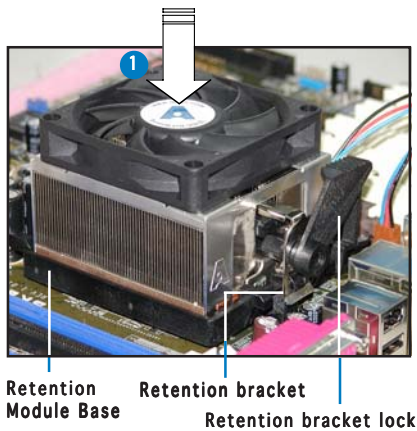


CAUTION. A DDR DIMM is keyed with a notch so that it fits in only one direction. DO NOT force a DIMM into a socket to avoid damaging the DIMM.

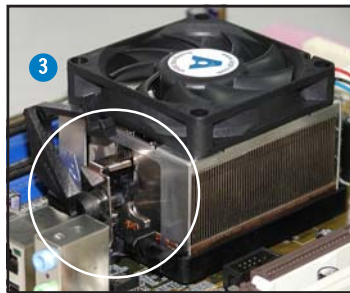
Installing the fan and heatsink assembly



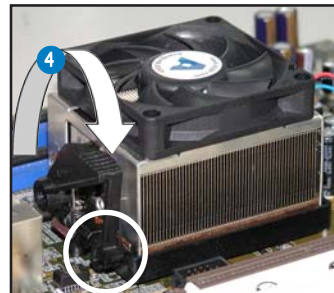
- The retention module base is already installed on the motherboard upon purchase. You do not have to remove the retention module base when installing the CPU or installing other motherboard components.
- If you purchased a separate CPU heatsink and fan assembly, make sure that a Thermal Interface Material is properly applied to the CPU heatsink or CPU before you install the heatsink and fan assembly.



Attach one end of the retention bracket to the retention module base.



Align the other end of the retention bracket to the retention module base. A clicking sound denotes that the retention bracket is in place.

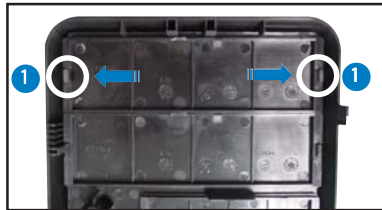


Push down the retention bracket lock on the retention mechanism to secure the heatsink and fan to the module base.



IMPORTANT. Do not forget to connect the CPU fan connector! Hardware monitoring errors can occur if you fail to plug this connector.

Installing an optical drive

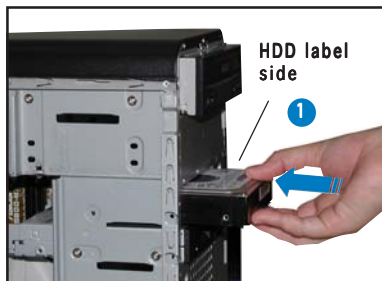


Remove the drive bay plate.



Audio cable
IDE ribbon cable
Red stripe to pin 1
Power cable

Installing a hard disk drive



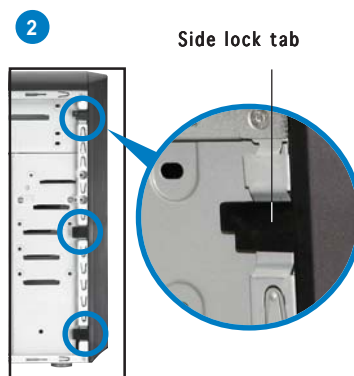
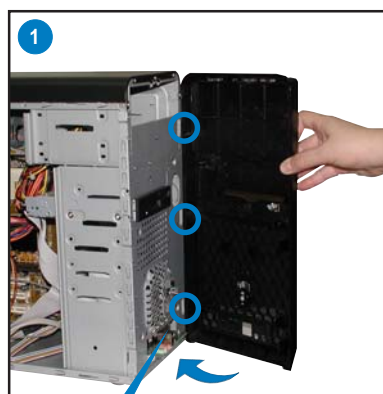
Primary IDE connector



IDE ribbon cable
Power cable

Connect the blue interface of the IDE ribbon cable to the primary IDE connector (blue connector labeled PRI_IDE1) on the motherboard.

Replacing the side plate and front cover



Snap the side lock tabs to secure the front panel.



Drive in two screws on the rear panel.



IMPORTANT. Repeat steps 3 and 4 to replace the other side plate.

Free Manuals Download Website

<http://myh66.com>

<http://usermanuals.us>

<http://www.somanuals.com>

<http://www.4manuals.cc>

<http://www.manual-lib.com>

<http://www.404manual.com>

<http://www.luxmanual.com>

<http://aubethermostatmanual.com>

Golf course search by state

<http://golfingnear.com>

Email search by domain

<http://emailbydomain.com>

Auto manuals search

<http://auto.somanuals.com>

TV manuals search

<http://tv.somanuals.com>