

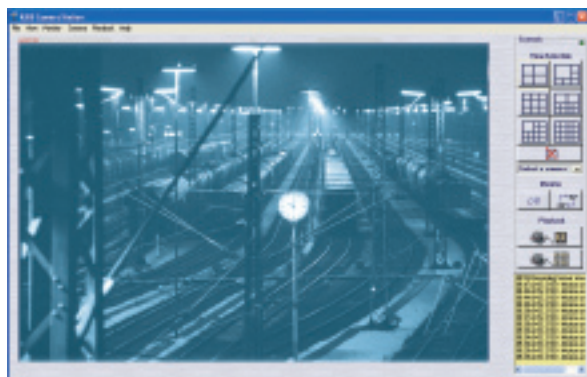
AXIS 231D+/AXIS 232D+ Network Dome Cameras

*For professional video
surveillance applications*

For demanding security surveillance and remote monitoring applications, the AXIS 231D+/232D+ Network Dome Cameras deliver superior quality Motion JPEG and MPEG-4 video in all light conditions over IP networks. As with all true domes, the Axis network dome cameras enable a continuous 360-degree pan operation and support 50 preset positions and guard tour. Fast, high precision PTZ control using mouse or Joystick makes it easy to track objects of interest. The cameras also include a complete set of network security features such as HTTPS and IP address filtering and an 18x optical zoom, autofocus lens.

The AXIS 231D+/232D+ can capture color video in light conditions down to 0.3 lux, and the AXIS 232D+, with its automatic or manually removable IR-cut filter, is able to capture black and white video in dark conditions as low as 0.005 lux.

The AXIS 231D+/AXIS 232D+ are perfect for professional security installations at airports, railway stations, prisons, warehouses, manufacturing facilities, shopping centers and school campuses.



- Full frame rate: up to 30/25 frames per second for all resolutions
- Support simultaneous streams of Motion JPEG and MPEG-4
- Built-in 18x optical + 12x digital zoom lens with auto focus
- Day/night functionality with images down to 0.005 lux (AXIS 232D+)
- Preset positions and Guard tour
- High precision controllability using mouse or Joystick

AXIS[®]
COMMUNICATIONS

AXIS 231D+/AXIS 232D+ Network Dome Cameras



Specifications

Models	AXIS 231D+ 50 Hz/PAL AXIS 231D+ 60 Hz/NTSC AXIS 232D+ 50 Hz/PAL (Automatic day/night) AXIS 232D+ 60 Hz/NTSC (Automatic day/night)	Operating conditions	5 - 50 °C (41 - 122 °F) Humidity 20 - 80% RH (non-condensing)
Image Sensor	1/4" Sony EXview HAD CCD	Installation, management and maintenance	AXIS Camera Management tool on CD and web-based configuration Configuration of backup and restore Firmware upgrades over HTTP or FTP, firmware available at www.axis.com
Lens	F1.4-3.0, f=4.1 mm wide to 73.8 mm tele, autofocus Focus range: 35 mm (wide) or 800 mm (tele) to infinity	Video access from Web browser	Camera live view, video recording to file (ASF), sequence tour for up to 20 PTZ presets or Axis video sources, Customizable HTML pages
Angle of view	2.8° - 48° horizontal	Minimum Web browsing requirements	Pentium III CPU 500 MHz or higher, or equivalent AMD 128 MB RAM AGP graphics card 32 MB RAM, Direct Draw, Windows XP, 2000, DirectX 9.0 or later Internet Explorer 6.x or later For other operating systems and browsers see www.axis.com/techsup
Zoom	18x optical, 12x digital	System integration support	Open API for software integration available at www.axis.com , including AXIS VAPIX API, AXIS Media Control SDK, event trigger data in video stream, PTZ control with Windows compatible Joystick Quality of Service (QoS) Layer 3, DiffServ Model. Embedded operating system: Linux
Minimum illumination	Color: 0.3 lux at 30IRE B/W: 0.005 lux at 30IRE (Only AXIS 232D+)	Supported protocols	IPv4/v6, HTTP, HTTPS, SSL/TLS*, TCP, SNMPv1/v2c/v3 (MIB-II), RTP, RTP, UDP, IGMP, RTCP, SMTP, FTP, ICMP DHCP, UPnP, Bonjour, ARP, DNS, DynDNS, SOCKS, IEEE802.1X. More information on protocol usage available at www.axis.com <i>*This product includes software developed by the Open SSL Project for use in the Open SSL Tool kit (www.openssl.org)</i>
Pan range	360° endless	Included accessories	Power supply: 24 V AC, 1.5 A Hard ceiling mounting bracket Drop ceiling mounting bracket Transparent bubble CD with installation tool, software, User manual, MPEG-4 licenses (1 encoder, 1 decoder), MPEG-4 decoder (Windows) Quick installation guide Connection module for power and alarm in/out
Tilt range	0° - 90° (± 3°)	Video management software (not incl.)	AXIS Camera Station - Surveillance application for viewing, recording and archiving up to 25 cameras See www.axis.com/partner/adp_partners.htm for more software applications via partners
Max speed	Pan 360°/s, Tilt 360°/s	Accessories (not incl.)	Housings for adverse indoor/outdoor environments Smoked bubble Outdoor rated power supply IR Illumination (Only AXIS 232D+) AXIS 295 Video Surveillance Joystick AXIS 292 Network Video Decoder MPEG-4 Decoder multi-user license pack
Video compression	Motion JPEG MPEG-4 Part 2 (ISO/IEC 14496-2), Profiles: ASP and SP	Approvals	EN 55022 Class A, EN 61000-3-2, EN 61000-3-3, EN 55024, FCC Part 15 Subpart B Class A, ICES-003 Class A, VCCI Class A, C-tick AS/NZS CISPR 22 Class A, EN 60065 Power supply: EN 60950, UL, CSA
Resolution	4CIF, 2CIFExp, 2CIF, CIF, QCIF Max 704x480 (NTSC) 704x576 (PAL) Min 160x120 (NTSC) 176x144 (PAL)	Dimensions (HxWxD) and weight	225 x 144 x 144 mm (8.9" x 5.7" x 5.7") 1.8 kg (4.0 lb) excluding power supply
Frame rate (NTSC/PAL)	Motion JPEG: Up to 30/25 fps in all resolutions MPEG-4: Up to 25/21 fps at 4CIF/2CIFExp Up to 30/25 fps at 2CIF/CIF/QCIF		
Video streaming	Simultaneous Motion JPEG and MPEG-4 Controllable frame rate and bandwidth Constant and variable bit rate (MPEG-4)		
Image settings	Compression levels: 11 (Motion JPEG)/23 (MPEG-4) Configurable brightness, sharpness, white balance, exposure control, backlight compensation Overlay capabilities: time, date, text, custom logo or image De-interlacing (4CIF resolution)		
PTZ control	50 preset positions, Guard tour, Control queue Supports Windows compatible joysticks		
Shutter time	1 sec to 1/10.000 sec		
Security	Multiple user access levels with password protection IP address filtering, HTTPS encryption, IEEE 802.1X authentication		
Alarm and event management	Events triggered by video motion detection, PTZ preset position external inputs or according to a schedule, Image upload over FTP,email and HTTP, Notification over TCP, email, HTTP and external outputs Pre- and post alarm buffer of 9 MB per channel		
Connectors	Ethernet 10BaseT/100BaseTX, RJ-45 4 alarm inputs, 4 outputs		
Processors and memory	CPU: ETRAX 100LX 32bit Video processing and compression: ARTPEC-2 Memory: 32 MB RAM, 8 MB Flash Battery backed up real-time clock		
Power	19 - 28 VAC, max 25 VA 24 - 40 VDC, max 20 W		

28849JEN/R5/0704

©2007, Axis Communications AB. The Axis trademark is registered by Axis AB. All other company names and products are trademarks or registered trademarks of their respective companies. We reserve the right to introduce modifications without notice.

www.axis.com



Free Manuals Download Website

<http://myh66.com>

<http://usermanuals.us>

<http://www.somanuals.com>

<http://www.4manuals.cc>

<http://www.manual-lib.com>

<http://www.404manual.com>

<http://www.luxmanual.com>

<http://aubethermostatmanual.com>

Golf course search by state

<http://golfingnear.com>

Email search by domain

<http://emailbydomain.com>

Auto manuals search

<http://auto.somanuals.com>

TV manuals search

<http://tv.somanuals.com>