



## **USER GUIDE**

# **WIRELESS USB HUB AND ADAPTER KIT/ WIRELESS USB DEVICE ADAPTER KIT**

**Model: 29570 (4-port Hub) /29571 (1-port Device Adapter)**

# TABLE OF CONTENTS

Introduction.....	2
Features.....	3
System Requirements.....	4
Package Contents.....	5
Device Overview	
Wireless USB Adapter.....	6
Wireless USB Hub.....	7
Wireless USB Device Adapter.....	8
Software/Device Installation.....	9
Using the Wireless USB Kit.....	16
Technical Specifications.....	21
Cables To Go One Year Warranty.....	22
Important Safety Information.....	23
FCC Statement.....	24
Appendix	
Cable association with other devices.....	25
Cable Association Procedure.....	26
Pin Association Procedure.....	28
Pin Change Procedure.....	30

# INTRODUCTION

Thank you for purchasing the TruLink™ Wireless USB Hub and Adapter Kit. This product utilizes the latest in wireless technology, so you can connect USB enabled devices such as printers, external hard drives, and digital cameras up to 30 feet away. With a highly secure connection you can use this product in settings such as corporate offices, classrooms, or in your home office/entertainment system. **We recommend that you read this manual thoroughly and retain for future reference.**

# FEATURES

- ❖ Full support for printers, scanners, cameras, MP3 players, external hard drives, and other USB peripherals
- ❖ Access and device-sharing support for as many as three associated computers
- ❖ Certified by the USB-IF, guaranteeing connectivity with all Certified Wireless USB™ products
- ❖ Based on Ultra Wide Band technology, providing speedy data transfer and low power consumption
- ❖ Convenient plug-and-play connectivity, with simple software installation and setup

# SYSTEM REQUIREMENTS

❖ Microsoft® Windows® XP or Microsoft® Vista® 32-bit

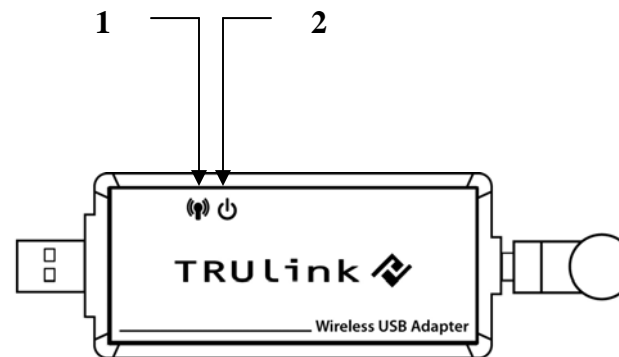
# PACKAGE CONTENTS

- ❖ Wireless USB Host Adapter for your computer
- ❖ Wireless USB Hub for your USB devices
- ❖ Two (2) Dipole Antennas (for USB Adapter and USB Hub)
- ❖ 3ft USB A Male/Mini-B Male Cable
- ❖ USB Extender with Cradle
- ❖ One (1) Power Adapter
- ❖ User Manual
- ❖ Quick Start Guide
- ❖ Driver CD

# DEVICE OVERVIEW

## WIRELESS USB HOST ADAPTER

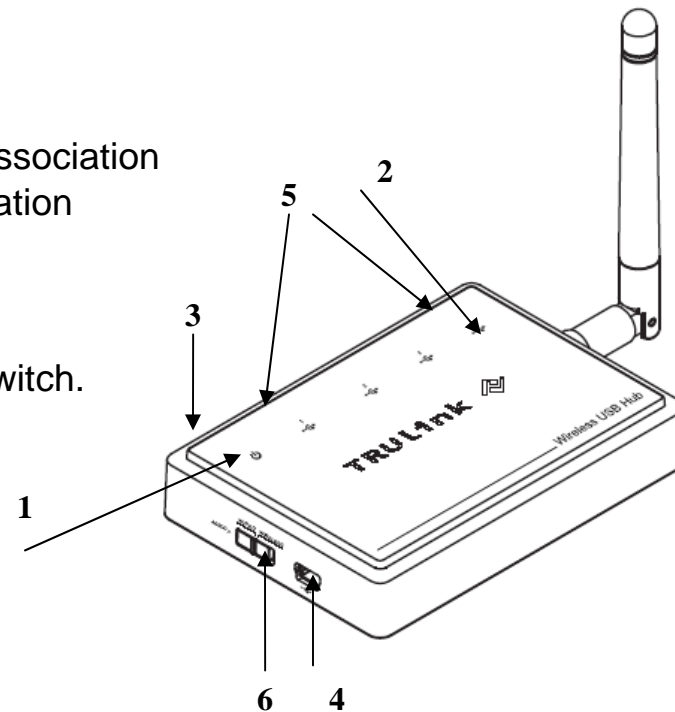
1. Link: Data Connection Indicator
  - LED is solid when transfer device is connected
  - LED blinks when data is being transferred
2. PWR: Power
  - LED is solid when powered by the PC



## DEVICE OVERVIEW

### WIRELESS USB HUB (4-PORT)-29570

1. PWR: Power Indicator
  - LED is solid when power is applied
2. 1-2-3-4: USB Status Indicator
  - Illuminated number/symbol indicates the USB port/s that is currently synced with a USB enabled device
3. PWR plug
  - Power adapter socket
4. USB (mini-B) port
  - In wireless mode, this connector is used for cable association
  - In wired mode, this connector is used for wired operation
5. USB A ports (4)
  - Plug in USB enabled devices
6. WIRELESS/WIRED switch
  - Choose from wired or wireless mode by using this switch.

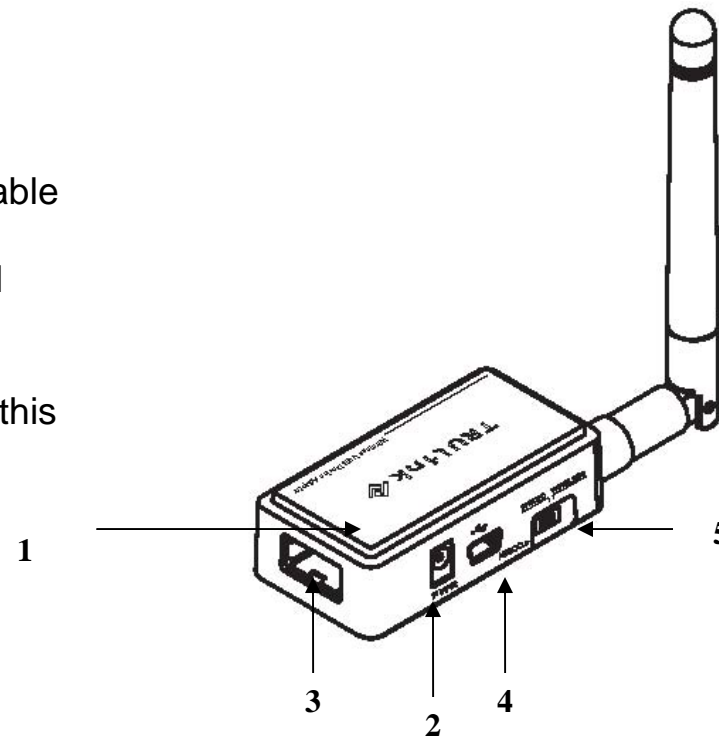




## DEVICE OVERVIEW

### WIRELESS USB DEVICE ADAPTER (1-PORT)-29571

1. PWR: Power Indicator
  - LED is solid when power is applied.
2. PWR plug
  - Power adapter socket
3. USB A port
  - Connect a USB enabled device
4. USB (mini-B) connector
  - In wireless mode, this connector is used for cable association
  - In wired mode, this connector is used for wired operation
5. WIRELESS/WIRED switch
  - Choose from wired or wireless mode by using this switch.



# SOFTWARE/DEVICE INSTALLATION

## IMPORTANT NOTE:

- If installing on Windows XP, Service Pack 2 (SP2) is required. Verify that this has been installed before installing the Wireless USB Hub and Adapter Kit software.
- Before installing the software, make sure that the Wireless USB Host Adapter and Wireless USB Hub Adapter are not connected to the computer, and the Wireless USB Hub Adapter is not powered.

## Step 1-Installing the software

Insert the CD provided and the one of the screens below will appear (depending on which kit you purchased). Select the "Software Installation" from the menu.



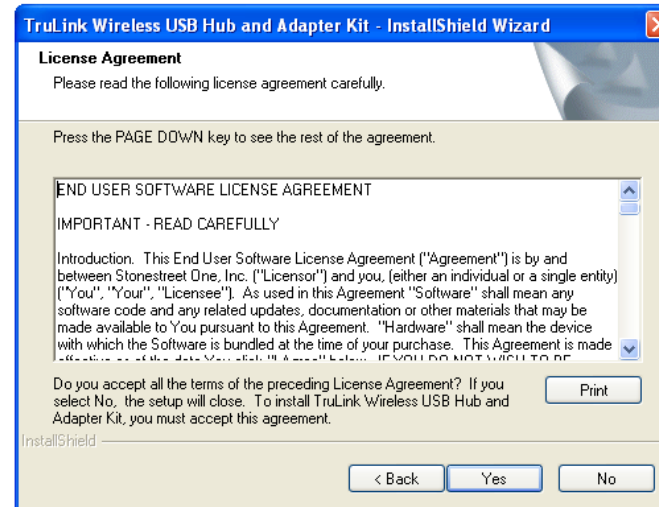
## SOFTWARE/DEVICE INSTALLATION

This will take you to the TruLink Wireless USB Kit InstallShield Wizard.

Click “Next” to go to proceed with the install.

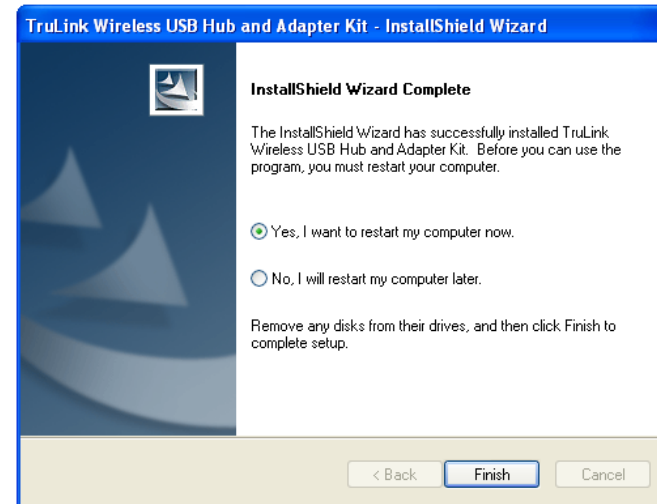


Read and accept the Wireless USB Kit software License Agreement by clicking “Yes”.



## SOFTWARE/DEVICE INSTALLATION

After the software installs your installation is complete and you can hit the “Finish” button to exit the wizard.  
**Important: reboot/restart if prompted.**



### Step 2-Driver Installation for the Wireless USB Host Adapter

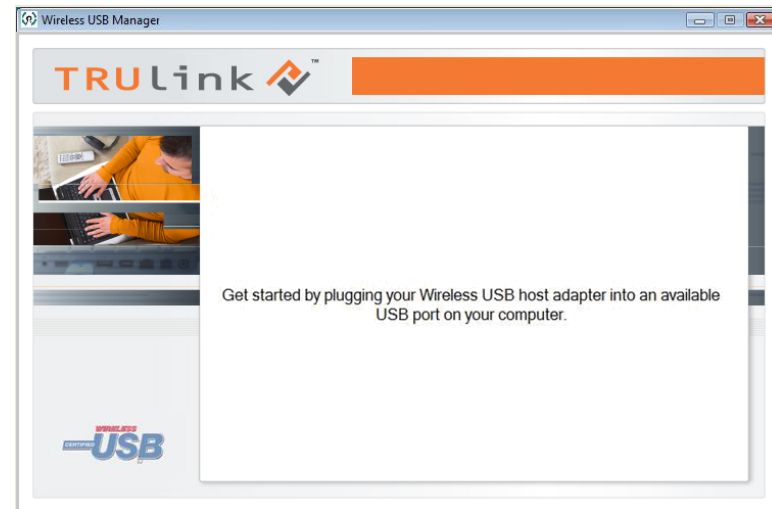
1. Open the Wireless USB Manager by double-clicking the icon on the icon tray at the bottom of your desktop.



Figure: TruLink Wireless USB Manager

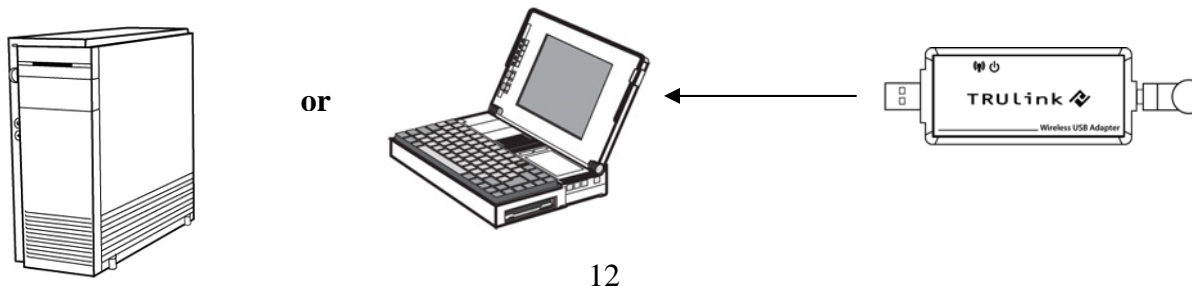
## SOFTWARE/DEVICE INSTALLATION

The Wireless USB Manager will open and instruct you on what to do next.



**Figure: Getting Started Screen**

2. Make sure the antenna is connected to the Wireless USB Host Adapter.
3. Plug the Wireless USB Host Adapter into any available USB port on your computer. You also have the option to connect the Wireless USB Host Adapter to the USB Cradle provided in the package if you need to make the Adapter more mobile.



## SOFTWARE/DEVICE INSTALLATION

Windows will automatically install the appropriate Wireless USB Host Adapter drivers and you will get a Successful Install message pop-up such as the following to let you know it was successful.

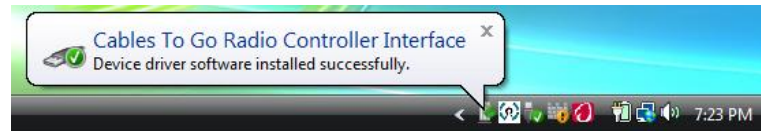


Figure: Successful Install Message

In the Wireless USB Manager, the **TruLink Hub** icon will appear in grey letting you know it is ready for connection.

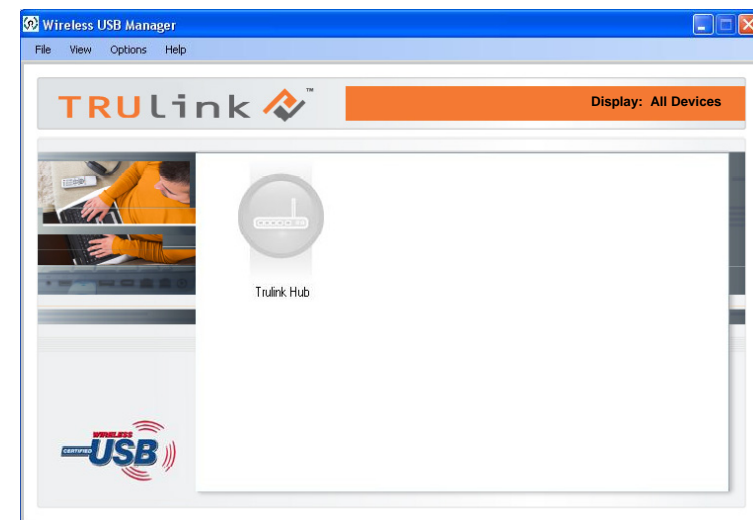


Figure: Wireless USB Hub Not Connected

## SOFTWARE/DEVICE INSTALLATION

### Step 3 – Driver Installation for the Wireless USB Hub

1. Make sure the antenna is connected to the Wireless USB Hub.
2. Plug the supplied power adapter into your Wireless USB Hub.

Windows will automatically install the appropriate Wireless USB Hub drivers and you will get another Successful Install Message pop-up such as on page 13 verifying successful installation.

On the Devices screen of the Wireless USB Manager, the **TruLink Hub** icon will be in color, indicating the Wireless USB Hub and Adapter Kit is active and ready to use.

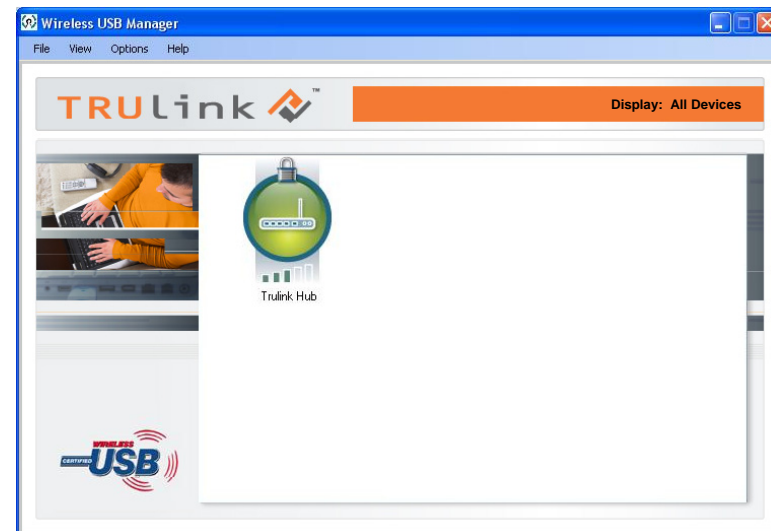
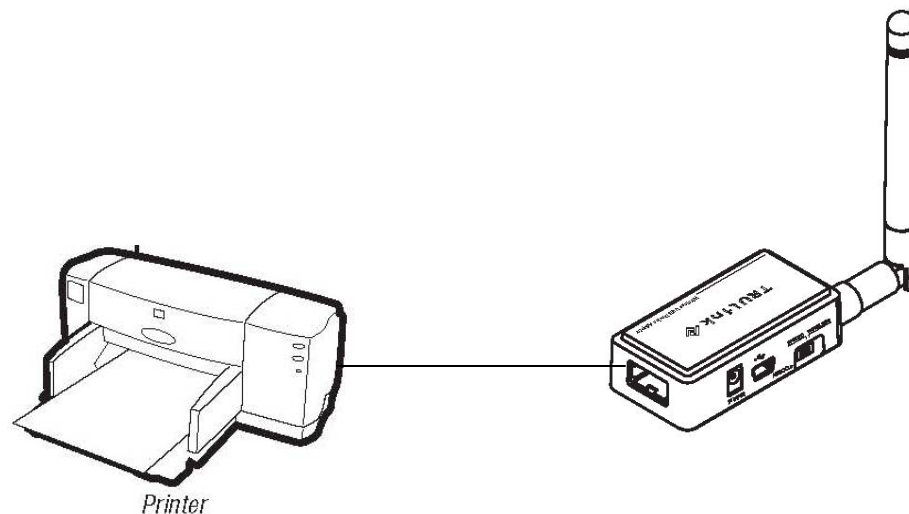


Figure: Wireless USB Hub Connected

## SOFTWARE/DEVICE INSTALLATION

You can now connect your USB enabled devices to the Wireless USB Hub (1-port as shown below) just as you would to your computer. Your devices will follow the same plug and unplug process so you may need to first eject your USB device from your PC before unplugging it from the Wireless USB Hub if you need to unplug it for any reason.



When your Wireless USB Hub and Adapter Kit is not in use, you may disconnect the Wireless USB Host Adapter from your PC if you wish, and connect it back whenever you are ready to use again. Simply plugging the Wireless USB Host Adapter back in your PC will begin automatic association as long as your Wireless USB Hub is still powered on.



# USING THE WIRELESS USB KIT

## WIRELESS USB MANAGER

The Wireless USB Manager is simple and easy to use interface to manage your Wireless USB devices and control your Wireless USB Host Adapter settings. The Wireless USB Manager can be accessed via Wireless USB Manager Icon in the Windows tray (Figure: Wireless USB Manager Icon).



Figure: Wireless USB Manager Icon

To launch the Wireless USB Manager, double click on the Wireless USB Manager icon. In the main pane, you can find an icon representing your Wireless USB Host Adapter. If your Wireless USB Host Adapter is not connected, the icon will be grayed out (Figure: Wireless USB Hub Not Connected). If your Wireless USB Host Adapter is connected and ready to work, the icon will change and show signal strength (Figure: Wireless USB Hub Connected).

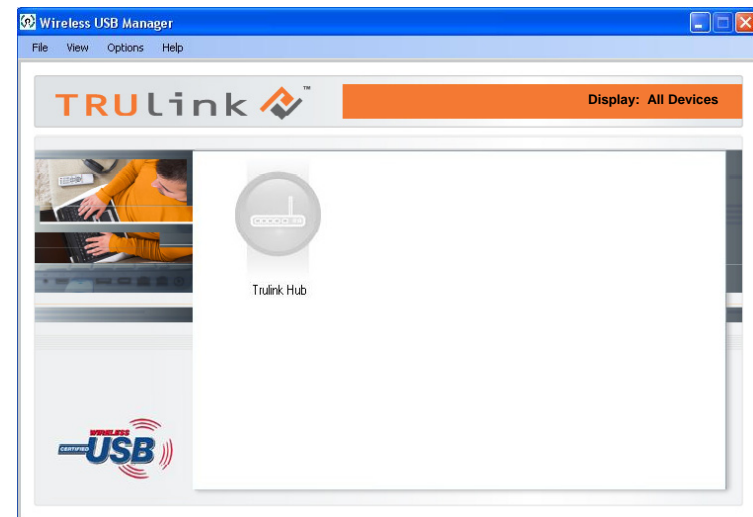


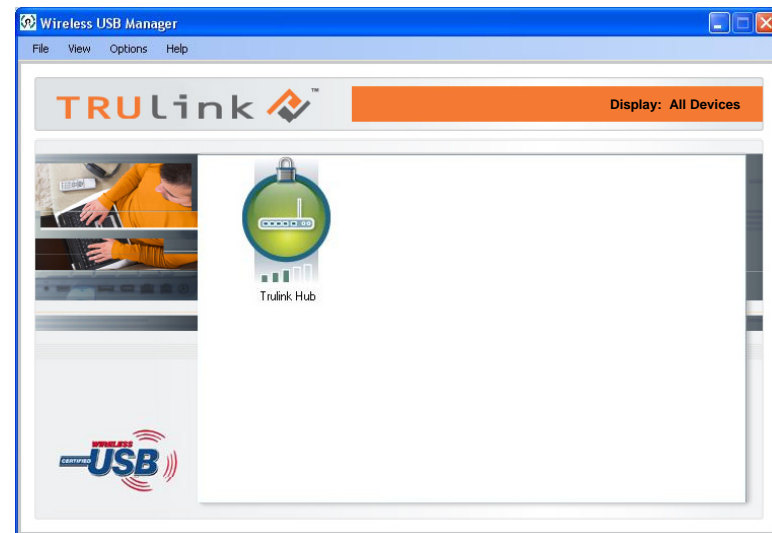
Figure: Wireless USB Hub Not Connected

## USING THE WIRELESS USB KIT

The **VIEW** menu will give the option of what type of devices you wish to display (All Devices, Connected Devices and Not Connected Devices).

The **OPTIONS** menu will give the option to launch Host Settings window and turn the Wireless USB Host Adapter radio on or off.

The **HELP** menu offers quick help on how to connect devices to your Wireless USB Host Adapter.



**Figure: Wireless USB Hub Connected**

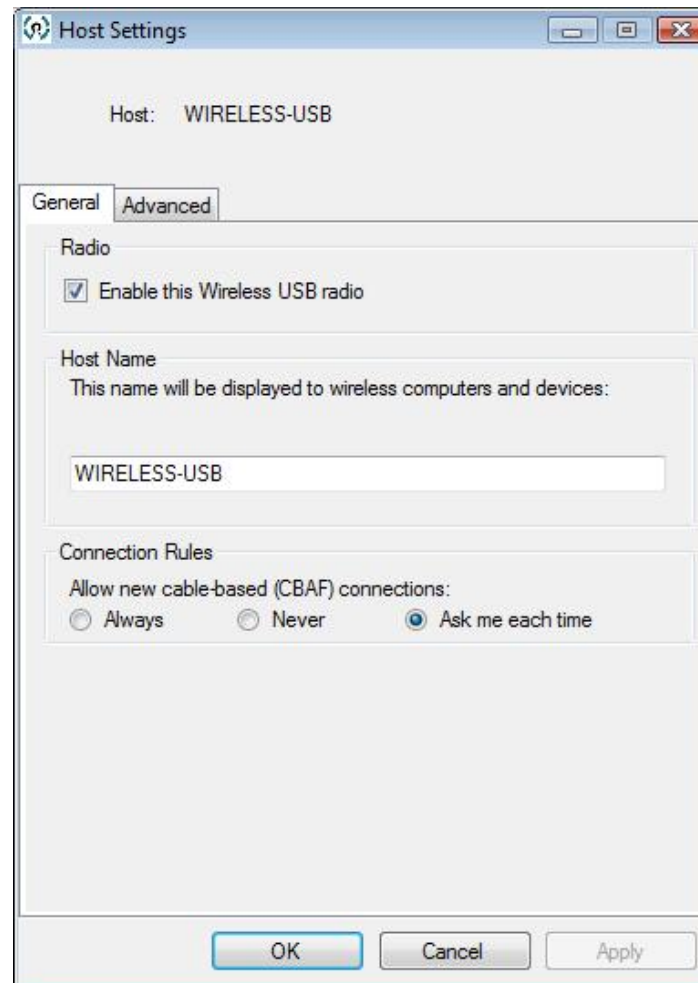
## USING THE WIRELESS USB KIT

To manage the Wireless USB Host Adapter settings, either select “Host Settings” in the “Option” menu of the Wireless USB Manager application or right click on the Wireless USB Manager icon in the Windows tray.

### GENERAL TAB (Figure: Host Settings – General)

1. Enable this Wireless USB radio: turn on or off the Wireless USB radio.
2. Host name: Change the name of your Wireless USB Host Adapter.
3. Cable association connection rules\*: Always, Never or Ask me each time. By default Wireless USB will ask you each time you cable associate.

\*Note that the cable association function is NOT needed to run your kit. This function will be used if you purchase additional Wireless USB devices.

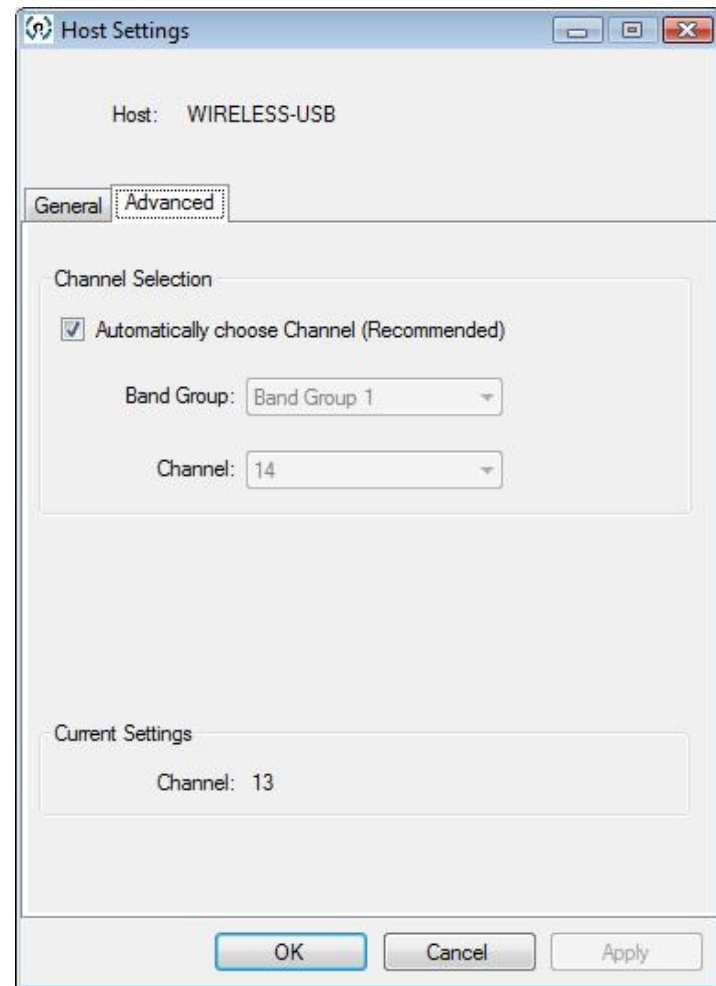


**Figure: Host Settings - General**

## USING THE WIRELESS USB KIT

### ADVANCED TAB (Figure: Host Settings – Advanced)

1. Channel selection: this function allows you to set manually a radio channel for the wireless communication (combination of Band Group and Channel). For optimal performance, the automatic setting is recommended.



**Figure: Host Settings - Advanced**

## **USING THE WIRELESS USB KIT**

### **USING YOUR WIRELESS USB HUB IN WIRED MODE**

Your Wireless USB Hub can also be used wired mode. Make sure the position of the WIRELESS/WIRED switch is in the WIRED position. Plug the USB cable between your computer and the Wireless USB Hub. The function is the same as the wireless mode but data will be transferred through the cable and not use the Wireless USB Host Adapter.

# TECHNICAL SPECIFICATIONS

Operating System Support	Microsoft XP 32-bit; Microsoft Vista 32-bit
PHY Data Rate	53.3Mbps, 80Mbps, 106.6Mbps, 160Mbps, 200Mbps, 320Mbps, 400Mbps, 480Mbps
Operating Range	Up to 30 feet (10 meters)
Frequency	3.1GHz to 4.8GHz (WiMedia Band Group 1)
Number of Channel	7 channels (3 FFI + 4 TFI)
RF Modulation Type	QPSK/DCM
Interface	USB 2.0
USB Specification	Certified Wireless USB 1.0; USB 2.0
Association Mode	Pre-Association, Cable Association and Pin Association; Stores up to 16 Associated Hosts
Antenna Type	Omni directional
Reset Switch	Used for erasing association history by pressing and holding this button for 10 seconds
Power Consumption	Wireless USB Host Adapter: 1.2W; Wireless USB Device Adapter: 3.3W
Max Output Power	-41.3 dBm/MHz
Power Adapter	5V, 2A; 100-240VAC

# CABLES TO GO™ WARRANTY STATEMENT

At Cables To Go, we want you to be totally confident in your purchase. That is why we offer a one year warranty on this device. If you experience problems due to workmanship or material defect for the duration of this warranty, we will repair or replace this device. To request a Return Merchandise Authorization (RMA) number, contact customer service at 1-800-293-4970 or [www.cablestogo.com](http://www.cablestogo.com).



Cables To Go  
3555 Kettering Blvd.  
Moraine, OH 45439  
1-800-826-7904  
[www.cablestogo.com](http://www.cablestogo.com)

# IMPORTANT SAFETY INFORMATION

**!** Do not plug the unit in any outlet that does not have enough current to allow the device to function. Refer to the specifications in this manual for power level of the unit.

**! Liquid:**

If this unit or its corresponding power adapter has had liquid spilled on or in it, do not attempt to use the unit. Do not attempt to use this product in an outdoor environment as elements such as rain, snow, hail, etc. can damage the product.

**!** In case of a storm, it is recommended that you unplug this device from the outlet.

**!** Avoid placing this product next to objects that produce heat such as portable heaters, space heaters, or heating ducts.

**! THERE ARE NO USER SERVICEABLE PARTS**

Do not attempt to open this product and expose the internal circuitry. If you feel that the product is defective, unplug the unit and refer to the warranty information section of this manual.

©2009.Cables To Go is a trademark of Cables To Go. Microsoft and XP/Vista are either registered trademarks or trademarks of Microsoft Corporation in the United States and/or other countries. This product is not endorsed or manufactured by Microsoft Corporation.



## FCC STATEMENT

This device complies with part 15 of the FCC Rules. Operation is subject to the following two conditions: (1) this device may not cause harmful interference, and (2) this device must accept any interference received, including interference that may cause undesired operation. This device is authorized under 47 CFR 15.519 (the FCC Rules and Regulations). The operation of this device is subject to the following restriction: This UWB device shall transmit only when it is sending information to an associated receiver. This UWB device shall cease transmission within 10 seconds unless it receives an acknowledgement from the associated receiver that its transmission is being received. An acknowledgement of reception must continue to be received by the transmitting device at least every 10 seconds of operation or the UWB device must cease transmitting.

# APPENDIX

## CABLE ASSOCIATION WITH OTHER DEVICES

### ASSOCIATION CONCEPT

In order to establish a secure wireless connection, both the Wireless USB Host Adapter and the Wireless USB devices must exchange information about each other. This is done via cable or pin association. Note that your Wireless USB kit has been pre-associated for your convenience and the process described below has been done for you.

### ASSOCIATION PROCESS

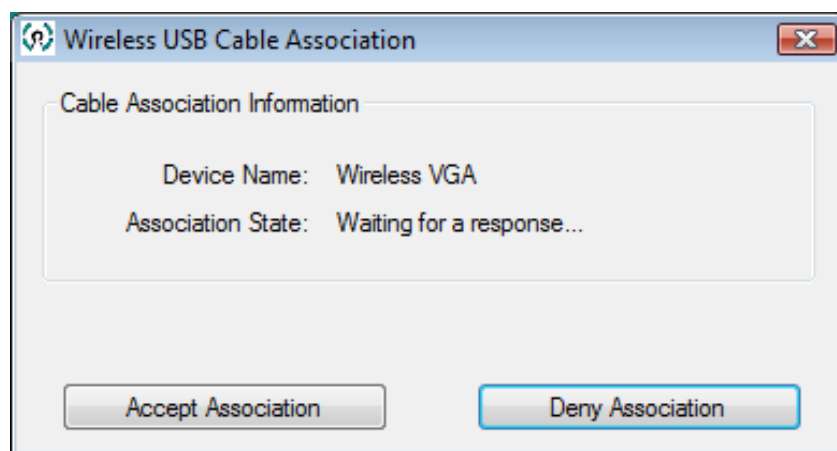
If you purchase additional Certified Wireless USB devices, you will have to associate them with your Wireless USB Host Adapter. Refer to your Wireless USB device documentation for more information on its settings for association or try contacting the product's manufacturer for assistance if needed.

## APPENDIX

### CABLE ASSOCIATION PROCEDURE

Cable association steps: Examples/Figures shown used with the association of the TruLink Wireless USB to VGA Adapter

1. Make sure that the Wireless USB Manager is running. Check your Windows tray for the Wireless USB Manager icon (Figure: Wireless USB Manager).
2. Make sure the WIRELESS/WIRED switch is in the WIRELESS position
3. Power on your Wireless USB Device Adapter (TruLink Wireless USB to VGA Adapter).
4. Connect the USB cable between an available USB port on your computer and your Wireless USB Device Adapter.
5. Complete cable association by pressing the “Accept Association” button when prompted. (Figure: Cable Association)
6. Remove the USB cable from your Wireless USB Device Adapter and computer.



**Figure: Cable Association**

## APPENDIX

Associated Wireless USB Device Adapters will appear as icons in the Wireless USB Manager. When the Wireless USB Device Adapter is connected to your computer, the icon will appear in color (Figure: Wireless VGA Adapter and TruLink Hub Connected).



**Figure: Wireless VGA Adapter and TruLink Hub Connected**

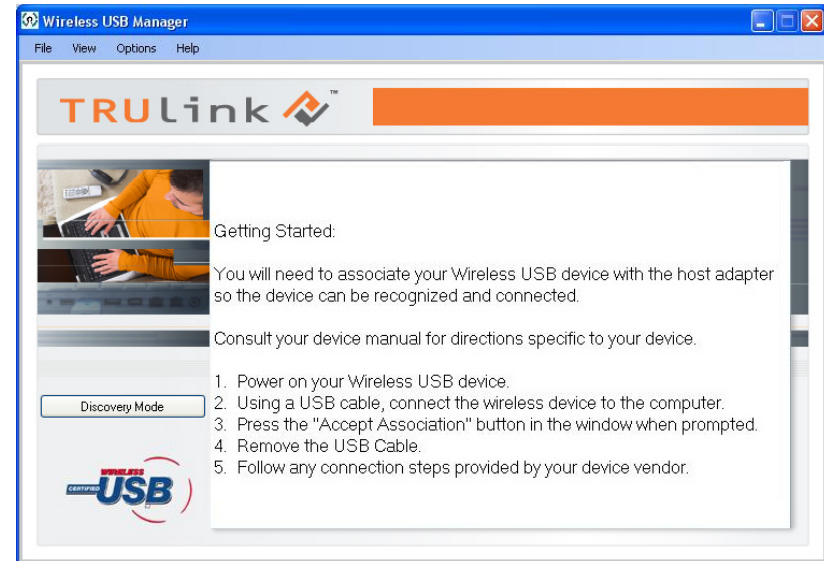
Note: You may rename or delete the Wireless USB Device Adapter by right-clicking the device icon in the Wireless USB Manager and select “rename” or “delete”.

## APPENDIX

### PIN ASSOCIATION PROCEDURE

Pin association steps: Examples/Figures shown used with the association of the TruLink Wireless USB to VGA Adapter

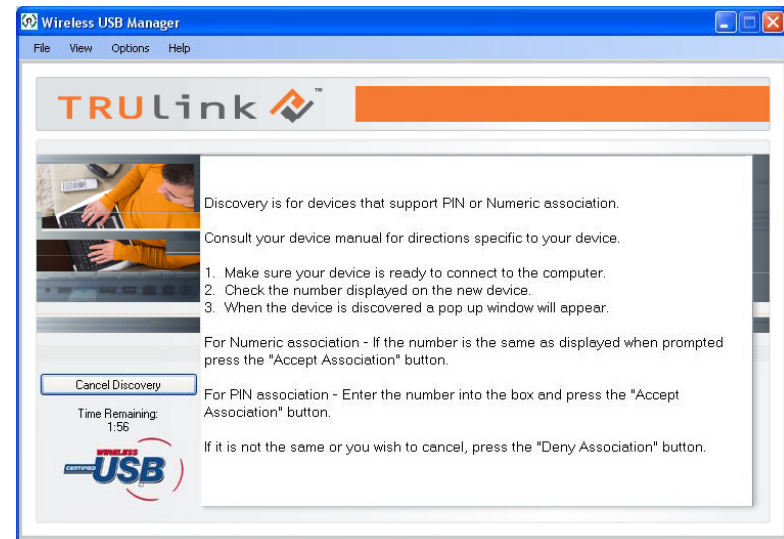
1. Make sure your Wireless USB Device Adapter is powered on and your Wireless USB Host Adapter is connected to your computer. Click the “Discovery Mode” button (Figure: Discovery Mode Screen).



**Figure: Discovery Mode Screen**

## APPENDIX

2. The Wireless USB Host will search for any available Wireless VGA Adapter within its range. Note that this operation can take up to 20 seconds (Figure: Discovery Mode in Process).



**Figure: Discovery Mode in Process**

3. Once the Wireless USB Host Adapter and the Wireless VGA Adapter have exchanged security information, the following dialog will appear.



**Figure: Pin Association Entry**

## **APPENDIX**

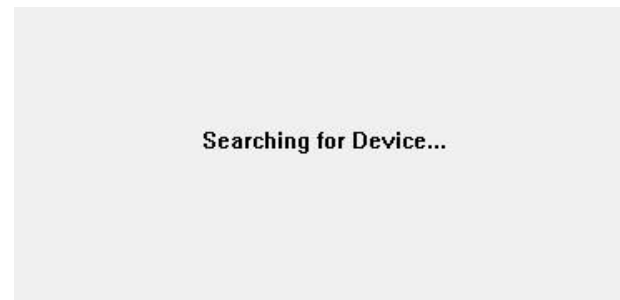
4. Enter the PIN of the Wireless VGA Adapter (4-digit PIN) and click Accept Association. The Wireless VGA Adapter and Wireless USB Host Adapter are now associated and ready for operation.

### **PIN CHANGE PROCEDURE**

The default PIN setting for the Wireless USB Hub is “1234”. This section gives you the instructions to change the PIN to another 4-Digit value.

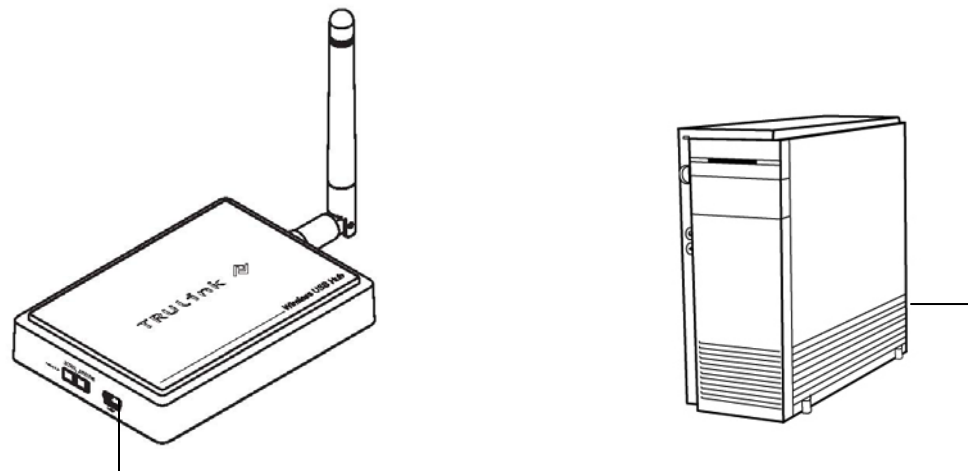
**IMPORTANT:** The application used to change the PIN is not supported in Vista 64bit.

1. Make sure your Wireless USB Host Adapters and the Wireless USB Hub Adapter are not connected to your computer.
2. Open/Launch the application “Pin Update” (C:\Program Files\Wireless USB Manager\Utility\PINUpdate). The following dialog will appear:



## APPENDIX

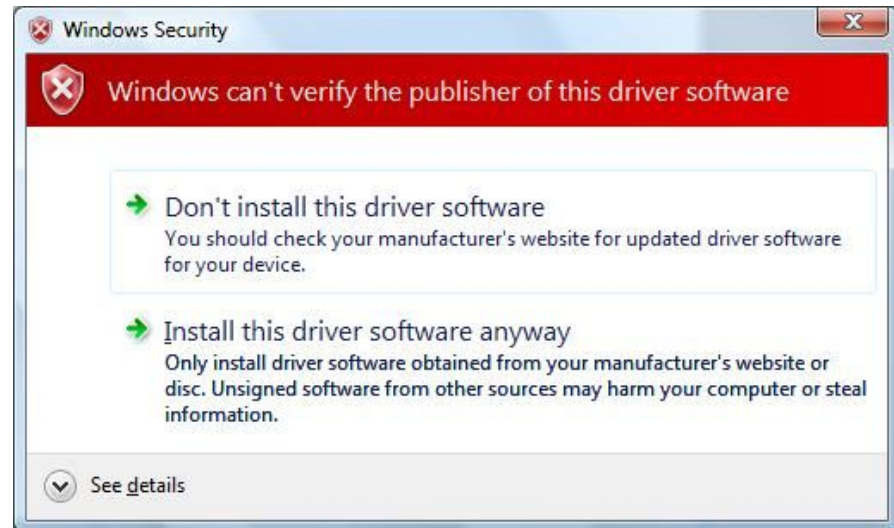
3. Make sure the WIRELESS/WIRED switch on your Wireless VGA Adapter is in the WIRELESS position and the power cable is plugged in your Wireless VGA Adapter. Connect the USB cable between your Wireless VGA Adapter and any available USB port on your computer.





## APPENDIX

4. Click Install this driver software anyway.



5. To change pin, click "Change PIN"



## APPENDIX

6. Enter a 4-Digit PIN (0-9) and click OK.



7. If your PIN is valid, a Window displaying your new PIN will appear. Press OK. Your PIN has been successfully changed. **IMPORTANT:** please exit the Trulink PIN Utility application (Exit button as shown on figure in step 5) before unplugging the USB cable between your Wireless VGA Adapter and your PC.

For more information on this product or to check for updated drivers, manuals or frequently asked questions please visit our website.

[www.cablestogo.com](http://www.cablestogo.com)



VER. 2.0.4.28.09

## Free Manuals Download Website

<http://myh66.com>

<http://usermanuals.us>

<http://www.somanuals.com>

<http://www.4manuals.cc>

<http://www.manual-lib.com>

<http://www.404manual.com>

<http://www.luxmanual.com>

<http://aubethermostatmanual.com>

Golf course search by state

<http://golfingnear.com>

Email search by domain

<http://emailbydomain.com>

Auto manuals search

<http://auto.somanuals.com>

TV manuals search

<http://tv.somanuals.com>