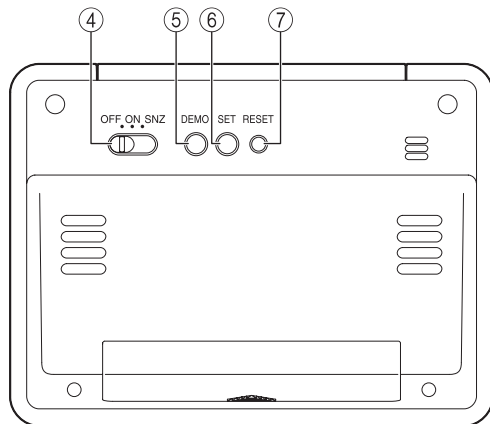
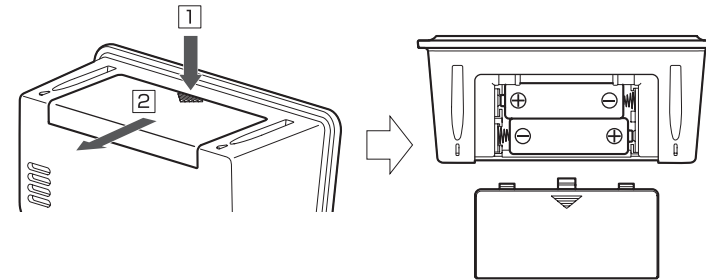
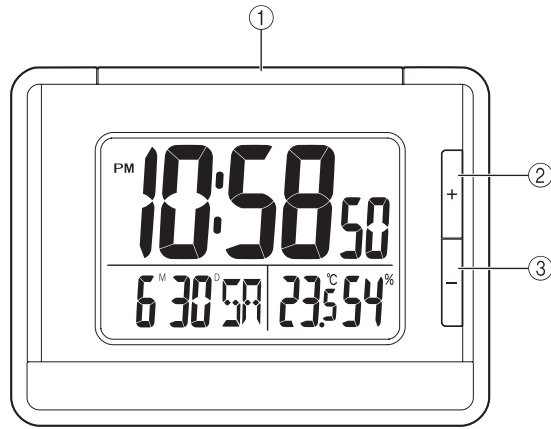
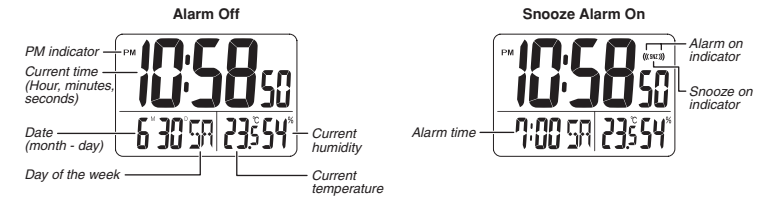


Operation Guide DQ-980

ILLUSTRATION



- A sticker is affixed to the glass of the clock when you purchase it. Be sure to remove the sticker before using the clock.
- Depending on the clock model, its configuration may differ somewhat from that shown in the illustration.



Operation Guide DQ-980

CASIO®

GENERAL GUIDE

① SNOOZE/LIGHT button

- Press this button to illuminate the display for about five seconds.
- Pressing this button while the alarm is sounding stops the alarm.

② ③ + / - buttons

- Use these buttons to change the setting that is flashing on the display.

④ Alarm Mode selector

- SNZ: Snooze alarm on
- ON: Alarm on
- OFF: Alarm off

⑤ DEMO button

- Press this button to sound the alarm.

⑥ SET button

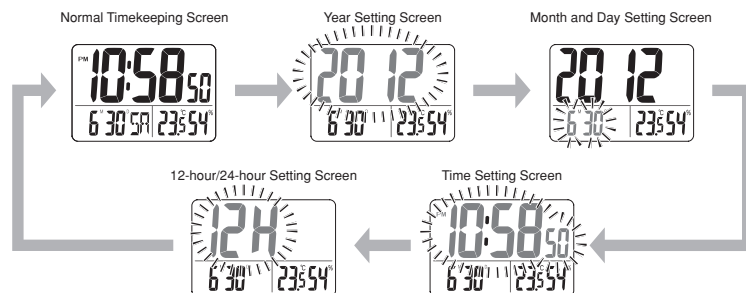
- Use this button when setting the current time.

⑦ RESET button

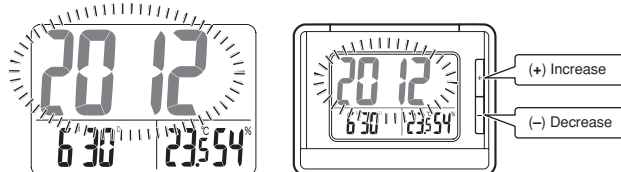
- Press this button to reset the clock after replacing its battery.

USING THE CLOCK

1. Press the **SET button** (⑥) to cycle through the setting screens as shown below.



2. While the screen you want is displayed, use the **+ and - buttons** (② ③) to change the flashing digits.
 - Holding down + or - changes the flashing digits at high speed.
 - You can set the year in the range of 2000 to 2069. The day of the week is set automatically in accordance with the date setting.
 - Pressing + or - while the Time Setting Screen is on the display causes the seconds count to be reset to 00.
 - Each press of + or - while the 12-hour/24-hour Setting Screen is on the display toggles between 12-hour and 24-hour timekeeping.



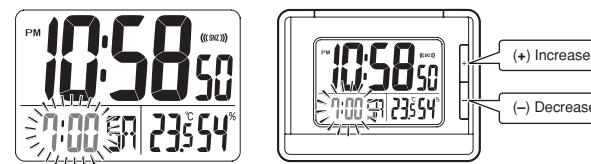
3. After making the settings you want, use the **SET button** (⑥) to display the Normal Timekeeping Screen.
 - The clock automatically returns to the Normal Timekeeping Screen if you leave a setting screen on the display for about five minutes without performing any operation.

USING THE ALARM

The alarm sounds when the alarm time you set is reached. You can also use the **Alarm Mode selector** (④) to select the snooze alarm feature.

Setting the Alarm Time

Use the **+ and - buttons** (② ③) to set the alarm time. Pressing the **+ and - buttons** (② ③) causes the alarm time to appear in place of the date on the display.



- Holding down + or - changes the digits at high speed.

Turning the Alarm On and Off

Use the **Alarm Mode selector** (④) to turn the alarm on and off, and to select the snooze feature.

Alarm Mode selector	Description
SNZ ((((SNZ))))	The alarm sounds at the preset time for one minute, and up to seven more times every five minutes thereafter. Even if you stop the alarm by pressing the SNOOZE/LIGHT button (①), the alarm sounds again about five minutes later. <ul style="list-style-type: none"> • The indicator SNZ flashes on the display to indicate that the snooze feature is activated.
ON (((())))	The alarm sounds at the preset time for one minute.
OFF	The alarm does not sound.

- The alarm time appears in place of the date on the display whenever the **Alarm Mode selector** (④) is set to ON or SNZ.
- The volume of the alarm sound cycles through five levels as it sounds.

Stopping the Alarm

- When the alarm is sounding, press the **SNOOZE/LIGHT button** (①) to stop it. When the snooze feature is turned on, the alarm will sound again in about five minutes.
- To turn off the snooze feature, slide the **Alarm Mode selector** (④) to OFF.

Demo Alarm

Press the **DEMO button** (⑤) to sound the alarm.

THERMOMETER FUNCTIONS

- Display Range: -19.9°C (Under: LL) to 49.9°C (Over: HH)
- Guaranteed Range: 0°C to 40°C

HYGROMETER FUNCTIONS

- Display Range: 20% (Under: LL) to 90% (Over: HH)
- Sensor Precision: ±10% when temperature is 5°C to 40°C.

BATTERY REPLACEMENT

Replace batteries whenever the display becomes dim and difficult to read.

To replace the battery

1. Open the battery compartment cover as shown in the illustration.
2. Remove all of the old batteries.
3. Load a full set of new batteries. Make sure that their positive (+) and negative (-) ends face in the correct directions. If you load batteries incorrectly, they can burst and damage the clock.
4. Press the **RESET** button (⌂). Be sure to press the **RESET** button (⌂) after replacing batteries.
5. Replace the battery compartment cover.

Battery precautions

- Keep batteries out of the reach of small children. If a battery is accidentally swallowed, contact your physician immediately.
- Be sure to load the batteries with their positive (+) and negative (-) ends facing correctly.
- Never mix old and new batteries, or batteries of different brands.
- Never charge the batteries that come with the clock.
- Should batteries ever leak while in the clock, wipe out the fluid with a cloth, taking care not to let any get onto your skin.
- Replace the batteries at least once a year, even if the current batteries are working properly.
- The batteries that come with the clock lose some of their power during transport and storage.

SPECIFICATIONS

Accuracy at normal temperature: ±60 seconds a month

Calendar system: Auto-calendar pre-programmed from the year 2000 to 2069

Alarm: Daily Alarm, Snooze Alarm (7 repeats), Demo Alarm

Thermometer: Measuring range: 0°C to 40°C (guaranteed); Display range: -19.9°C to 49.9°C

Temperature Sensor Precision: ±2°C in range of 0°C to 40°C

Hygrometer Function: Measuring range: 20% to 90%, when temperature is 0°C to 49.9°C

Humidity Sensor Precision: ±10%, when temperature is 5°C to 40°C

Other: LED light; 12/24-hour timekeeping

Battery: Two AA size batteries (Type: R6P)

Battery life: Approximately 1 year

- 1 minute alarm operation per day
- 5 seconds light operation per day

Operating temperature: 0°C to 40°C

Free Manuals Download Website

<http://myh66.com>

<http://usermanuals.us>

<http://www.somanuals.com>

<http://www.4manuals.cc>

<http://www.manual-lib.com>

<http://www.404manual.com>

<http://www.luxmanual.com>

<http://aubethermostatmanual.com>

Golf course search by state

<http://golfingnear.com>

Email search by domain

<http://emailbydomain.com>

Auto manuals search

<http://auto.somanuals.com>

TV manuals search

<http://tv.somanuals.com>