

Dell™ Inspiron™ 1121 Service Manual

[Before You Begin](#)

[Battery](#)

[Memory Module\(s\)](#)

[Keyboard](#)

[Hard Drive](#)

[Palm Rest](#)

[Power Button Board](#)

[Wireless Mini-Card\(s\)](#)

[Audio Board](#)

[Coin-Cell Battery](#)

[Display](#)

[Camera](#)

[Middle Cover](#)

[AC Adapter Connector](#)

[System Board](#)

[Processor Heat Sink](#)

[Speakers](#)

[Flashing the BIOS](#)

Notes, Cautions, and Warnings



NOTE: A NOTE indicates important information that helps you make better use of your computer.



CAUTION: A CAUTION indicates either potential damage to hardware or loss of data and tells you how to avoid the problem.



WARNING: A WARNING indicates a potential for property damage, personal injury, or death.

Information in this document is subject to change without notice.
© 2010 Dell Inc. All rights reserved.

Reproduction of these materials in any manner whatsoever without the written permission of Dell Inc. is strictly forbidden.

Trademarks used in this text: *Dell*, the *DELL* logo, and *Inspiron* are trademarks of Dell Inc.; *Windows* and the *Windows* start button logo are either trademarks or registered trademarks of Microsoft Corporation in the United States and/or other countries; *Bluetooth* is a registered trademark owned by Bluetooth SIG, Inc. and is used by Dell under license.

Other trademarks and trade names may be used in this document to refer to either the entities claiming the marks and names or their products. Dell Inc. disclaims any proprietary interest in trademarks and trade names other than its own.

December 2010 Rev. A00

Regulatory model: P07T series
Regulatory type: P07T001

AC Adapter Connector

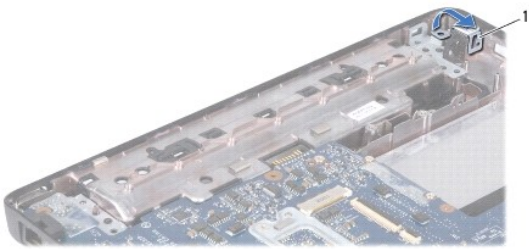
Dell™ Inspiron™ 1121 Service Manual

- [Removing the AC Adapter Connector](#)
- [Replacing the AC Adapter Connector](#)

- ⚠ WARNING:** Before working inside your computer, read the safety information that shipped with your computer. For additional safety best practices information, see the Regulatory Compliance Homepage at www.dell.com/regulatory_compliance.
- ⚠ CAUTION:** Only a certified service technician should perform repairs on your computer. Damage due to servicing that is not authorized by Dell™ is not covered by your warranty.
- ⚠ CAUTION:** To avoid electrostatic discharge, ground yourself by using a wrist grounding strap or by periodically touching an unpainted metal surface (such as a connector on your computer).
- ⚠ CAUTION:** To help prevent damage to the system board, remove the main battery (see [Removing the Battery](#)) before working inside the computer.
-

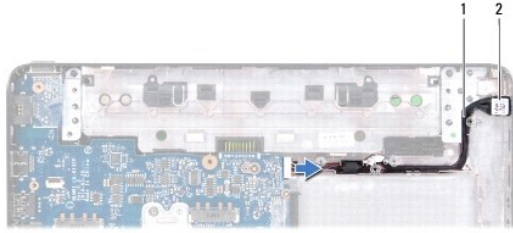
Removing the AC Adapter Connector

1. Follow the instructions in [Before You Begin](#).
2. Remove the battery (see [Removing the Battery](#)).
3. Remove the keyboard (see [Removing the Keyboard](#)).
4. Follow the instructions from [step 4](#) to [step 6](#) in [Removing the Hard Drive](#).
5. Remove the palm rest (see [Removing the Palm Rest](#)).
6. Remove the display assembly (see [Removing the Display Assembly](#)).
7. Remove the middle cover (see [Removing the Middle Cover](#)).
8. Remove the audio board (see [Removing the Audio Board](#)).
9. Lift and remove the bracket off the computer base as shown in the illustration.



1	bracket
---	---------

10. Disconnect the AC adapter connector cable from the connector on the system board.
11. Make note of the cable routing and carefully dislodge the AC adapter connector cable from the routing guides.
12. Lift the AC adapter connector off the computer base.



1	AC adapter connector cable	2	AC adapter connector
---	----------------------------	---	----------------------

Replacing the AC Adapter Connector

1. Follow the instructions in [Before You Begin](#).
2. Route the AC adapter connector cable and place the AC adapter connector on the computer base.
3. Connect the AC adapter connector cable to the connector on the system board.
4. Replace the bracket that secures the AC adapter connector on the computer base.
5. Replace the audio board (see [Replacing the Audio Board](#)).
6. Replace the middle cover (see [Replacing the Middle Cover](#)).
7. Replace the display assembly (see [Replacing the Display Assembly](#)).
8. Replace the palm rest (see [Replacing the Palm Rest](#)).
9. Follow the instructions from [step 5](#) to [step 7](#) in [Replacing the Hard Drive](#).
10. Replace the keyboard (see [Replacing the Keyboard](#)).
11. Replace the battery (see [Replacing the Battery](#)).

CAUTION: Before turning on the computer, replace all screws and ensure that no stray screws remain inside the computer. Failure to do so may result in damage to the computer.

[Back to Contents Page](#)

Audio Board

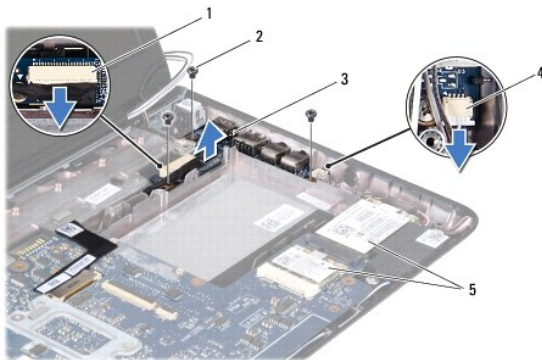
Dell™ Inspiron™ 1121 Service Manual

- [Removing the Audio Board](#)
- [Replacing the Audio Board](#)

- ⚠ WARNING:** Before working inside your computer, read the safety information that shipped with your computer. For additional safety best practices information, see the Regulatory Compliance Homepage at www.dell.com/regulatory_compliance.
- ⚠ CAUTION:** Only a certified service technician should perform repairs on your computer. Damage due to servicing that is not authorized by Dell™ is not covered by your warranty.
- ⚠ CAUTION:** To avoid electrostatic discharge, ground yourself by using a wrist grounding strap or by periodically touching an unpainted metal surface.
- ⚠ CAUTION:** To help prevent damage to the system board, remove the main battery (see [Removing the Battery](#)) before working inside the computer.
-

Removing the Audio Board

1. Follow the instructions in [Before You Begin](#).
2. Remove the battery (see [Removing the Battery](#)).
3. Remove the keyboard (see [Removing the Keyboard](#)).
4. Follow the instructions from [step 4](#) to [step 6](#) in [Removing the Hard Drive](#).
5. Remove the palm rest (see [Removing the Palm Rest](#)).
6. Disconnect the Mini-Card antenna cables from the Mini-Card(s).
7. Disconnect the audio cable and the speaker cable from their connectors on the audio board.
8. Remove the three screws that secure the audio board to the computer base.
9. Lift the audio board out of the computer base.




1	audio cable connector	2	screws (3)
3	audio board	4	speaker cable connector
5	Mini-Cards		

Replacing the Audio Board

1. Follow the instructions in [Before You Begin](#).
2. Align the connectors on the audio board with the slots on the computer base.

3. Replace the three screws that secure the audio board to the computer base.
4. Connect the audio cable and the speaker cable to their respective connectors on the audio board.
5. Connect the Mini-Card antenna cables to the Mini-Card(s).
6. Replace the palm rest (see [Replacing the Palm Rest](#)).
7. Follow the instructions from [step 5](#) to [step 7](#) in [Replacing the Hard Drive](#).
8. Replace the keyboard (see [Replacing the Keyboard](#)).
9. Replace the battery (see [Replacing the Battery](#)).

 **CAUTION:** Before turning on the computer, replace all screws and ensure that no stray screws remain inside the computer. Failure to do so may result in damage to the computer.

[Back to Contents Page](#)

Battery

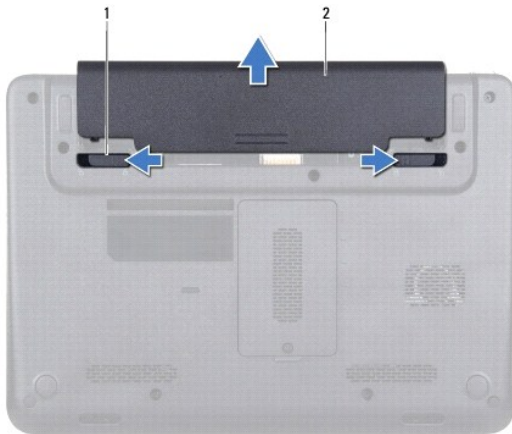
Dell™ Inspiron™ 1121 Service Manual

- [Removing the Battery](#)
- [Replacing the Battery](#)

- ⚠ WARNING:** Before working inside your computer, read the safety information that shipped with your computer. For additional safety best practices information, see the Regulatory Compliance Homepage at www.dell.com/regulatory_compliance.
- ⚠ CAUTION:** Only a certified service technician should perform repairs on your computer. Damage due to servicing that is not authorized by Dell™ is not covered by your warranty.
- ⚠ CAUTION:** To avoid electrostatic discharge, ground yourself by using a wrist grounding strap or by periodically touching an unpainted metal surface (such as a connector on your computer).
- ⚠ CAUTION:** To avoid damage to the computer, use only the battery designed for this particular Dell computer. Do not use batteries designed for other Dell computers.
-

Removing the Battery

1. Follow the instructions in [Before You Begin](#).
2. Turn off the computer (see [Turning Off Your Computer](#)) and turn it over.
3. Slide the battery release latches to the unlock position.
4. Slide the battery out of the battery bay.



1	battery release latches (2)	2	battery
---	-----------------------------	---	---------

Replacing the Battery

- ⚠ CAUTION:** To avoid damage to the computer, use only the battery designed for this particular Dell computer.

1. Follow the instructions in [Before You Begin](#).
 2. Slide the battery into the battery bay, until it clicks into place.
-

Before You Begin

Dell™ Inspiron™ 1121 Service Manual

- [Recommended Tools](#)
- [Turning Off Your Computer](#)
- [Before Working Inside Your Computer](#)

This manual provides instructions for removing and installing components in your computer. Unless otherwise noted, each procedure assumes that the following conditions exist:

- 1 You have performed the steps in [Turning Off Your Computer](#) and [Before Working Inside Your Computer](#).
- 1 You have read the safety information that shipped with your computer.
- 1 A component can be replaced or—if purchased separately—installed by performing the removal procedure in the reverse order.

Recommended Tools


The procedures in this document may require the following tools:

- 1 Phillips screwdriver
- 1 Small flat-blade screwdriver
- 1 Plastic scribe
- 1 BIOS executable update program available at support.dell.com

Turning Off Your Computer

 **CAUTION:** To avoid losing data, save and close all open files and exit all open programs before you turn off your computer.


1. Save and close all open files and exit all open programs.
2. Shut down the operating system:


Click **Start**  and then click **Shut Down**.


3. Ensure that the computer is turned off. If your computer did not automatically turn off when you shut down the operating system, press and hold the power button until the computer turns off.


Before Working Inside Your Computer


Use the following safety guidelines to help protect your computer from potential damage and to help to ensure your own personal safety.

 **WARNING:** Before working inside your computer, read the safety information that shipped with your computer. For additional safety best practices information, see the Regulatory Compliance Homepage at www.dell.com/regulatory_compliance.

 **CAUTION:** Only a certified service technician should perform repairs on your computer. Damage due to servicing that is not authorized by Dell is not covered by your warranty.

 **CAUTION:** Handle components and cards with care. Do not touch the components or contacts on a card. Hold a card by its edges or by its metal mounting bracket. Hold a component by its edges, not by its pins.

 **CAUTION:** When you disconnect a cable, pull on its connector or on its pull-tab, not on the cable itself. Some cables have connectors with locking tabs; if you are disconnecting this type of cable, press in on the locking tabs before you disconnect the cable. As you pull connectors apart, keep them evenly aligned to avoid bending any connector pins. Also, before you connect a cable, ensure that both connectors are correctly oriented and aligned.


 **CAUTION:** To avoid damaging the computer, perform the following steps before you begin working inside the computer.

1. Ensure that the work surface is flat and clean to prevent the computer cover from being scratched.
2. Turn off your computer (see [Turning Off Your Computer](#)) and all attached devices.

 **CAUTION:** To disconnect a network cable, first unplug the cable from your computer and then unplug the cable from the network device.

3. Disconnect all telephone or network cables from the computer.

4. Press and eject any installed cards from the 7-in-1 Media Card Reader.
5. Disconnect your computer and all attached devices from their electrical outlets.
6. Disconnect all attached devices from your computer.

 **CAUTION:** To help prevent damage to the system board, remove the main battery (see [Removing the Battery](#)) before working inside the computer.

7. Remove the battery (see [Removing the Battery](#)).
 8. Turn the computer top-side up, open the computer, and press the power button to ground the system board.
-

[Back to Contents Page](#)


[Back to Contents Page](#)

Flashing the BIOS

Dell™ Inspiron™ 1121 Service Manual

The BIOS may require flashing when an update is available or when replacing the system board. To flash the BIOS:

1. Turn on the computer.
2. Go to support.dell.com/support/downloads.
3. Click **Select Model**.
4. Locate the BIOS update file for your computer:


 **NOTE:** The Service Tag for your computer is located on a label at the bottom of your computer.

If you have your computer's Service Tag:

- a. Click **Enter a Service Tag**.
- b. Enter your computer's Service Tag in the **Enter a service tag:** field, click **Go**, and proceed to [step 5](#).

If you do not have your computer's Service Tag:

- a. Select the type of product in the **Select Your Product Family** list.
- b. Select the product brand in the **Select Your Product Line** list.
- c. Select the product model number in the **Select Your Product Model** list.

 **NOTE:** If you have selected a different model and want to start over again, click **Start Over** on the top right of the menu.

- d. Click **Confirm**.
5. A list of results appear on the screen. Click **BIOS**.
6. Click **Download Now** to download the latest BIOS file.
The **File Download** window appears.
7. Click **Save** to save the file on your desktop. The file downloads to your desktop.
8. Click **Close** if the **Download Complete** window appears.
The file icon appears on your desktop and is titled the same as the downloaded BIOS update file.
9. Double-click the file icon on the desktop and follow the instructions on the screen.

[Back to Contents Page](#)

[Back to Contents Page](#)

Internal Module With Bluetooth® Wireless Technology

Dell™ Inspiron™ N5020/M5030 Service Manual

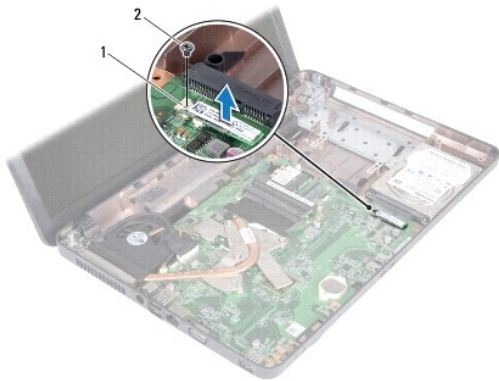
- [Removing the Bluetooth Module](#)
- [Replacing the Bluetooth Module](#)

- WARNING:** Before working inside your computer, read the safety information that shipped with your computer. For additional safety best practices information, see the Regulatory Compliance Homepage at www.dell.com/regulatory_compliance.
- CAUTION:** Only a certified service technician should perform repairs on your computer. Damage due to servicing that is not authorized by Dell™ is not covered by your warranty.
- CAUTION:** To avoid electrostatic discharge, ground yourself by using a wrist grounding strap or by periodically touching an unpainted metal surface (such as a connector on your computer).
- CAUTION:** To help prevent damage to the system board, remove the main battery (see [Removing the Battery](#)) before working inside the computer.

If you ordered a card with Bluetooth® wireless technology with your computer, it is already installed.

Removing the Bluetooth Module

1. Follow the instructions in [Before You Begin](#).
2. Remove the battery (see [Removing the Battery](#)).
3. Remove the keyboard (see [Removing the Keyboard](#)).
4. Remove the palm rest (see [Removing the Palm Rest](#)).
5. Remove the screw that secures the Bluetooth module to the connector on the system board.
6. Lift the Bluetooth module away from the system board.




1	Bluetooth module	2	screw
---	------------------	---	-------

Replacing the Bluetooth Module

1. Follow the instructions in [Before You Begin](#).
2. Align the connector on the Bluetooth module with the connector on the system board and press the Bluetooth module until it is fully seated.
3. Replace the screw that secures the Bluetooth module to the system board.

4. Replace the palm rest (see [Replacing the Palm Rest](#)).
5. Replace the keyboard (see [Replacing the Keyboard](#)).
6. Replace the battery (see [Replacing the Battery](#)).

 **CAUTION:** Before turning on the computer, replace all screws and ensure that no stray screws remain inside the computer. Failure to do so may result in damage to the computer.

[Back to Contents Page](#)

Camera

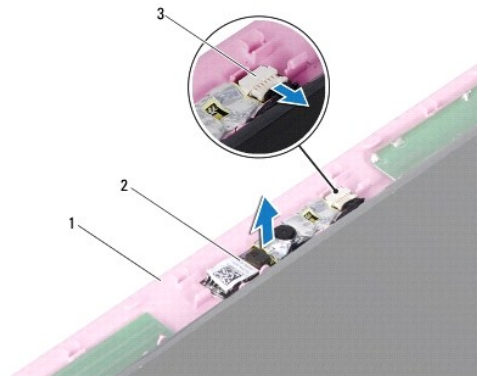
Dell™ Inspiron™ 1121 Service Manual

- [Removing the Camera](#)
- [Replacing the Camera](#)

- ⚠ WARNING:** Before working inside your computer, read the safety information that shipped with your computer. For additional safety best practices information, see the Regulatory Compliance Homepage at www.dell.com/regulatory_compliance.
- ⚠ CAUTION:** Only a certified service technician should perform repairs on your computer. Damage due to servicing that is not authorized by Dell™ is not covered by your warranty.
- ⚠ CAUTION:** To avoid electrostatic discharge, ground yourself by using a wrist grounding strap or by periodically touching an unpainted metal surface (such as a connector on your computer).
- ⚠ CAUTION:** To help prevent damage to the system board, remove the main battery (see [Removing the Battery](#)) before working inside the computer.

Removing the Camera

1. Follow the instructions in [Before You Begin](#).
2. Remove the battery (see [Removing the Battery](#)).
3. Remove the keyboard (see [Removing the Keyboard](#)).
4. Follow the instructions from [step 4](#) to [step 6](#) in [Removing the Hard Drive](#).
5. Remove the palm rest (see [Removing the Palm Rest](#)).
6. Remove the display assembly (see [Removing the Display Assembly](#)).
7. Remove the display bezel (see [Removing the Display Bezel](#)).
8. Disconnect the camera cable from the connector on the camera module.
9. Lift the camera module off the display back cover.




1	display back cover	2	camera module
3	camera cable connector		

Replacing the Camera

1. Follow the instructions in [Before You Begin](#).
2. Place the camera module on the display back cover using the alignment posts.
3. Press down on the camera module to secure it to the display back cover.

4. Connect the camera cable to the connector on the camera module.
5. Replace the display bezel (see [Replacing the Display Bezel](#)).
6. Replace the display assembly (see [Replacing the Display Assembly](#)).
7. Replace the palm rest (see [Replacing the Palm Rest](#)).
8. Follow the instructions from [step 5](#) to [step 7](#) in [Replacing the Hard Drive](#).
9. Replace the keyboard (see [Replacing the Keyboard](#)).
10. Replace the battery (see [Replacing the Battery](#)).

 **CAUTION:** Before turning on the computer, replace all screws and ensure that no stray screws remain inside the computer. Failure to do so may result in damage to the computer.

[Back to Contents Page](#)

Coin-Cell Battery

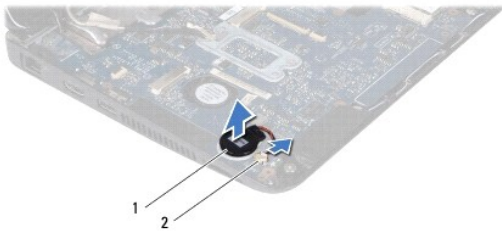
Dell™ Inspiron™ 1121 Service Manual

- [Removing the Coin-Cell Battery](#)
- [Replacing the Coin-Cell Battery](#)

- ⚠ WARNING:** Before working inside your computer, read the safety information that shipped with your computer. For additional safety best practices information, see the Regulatory Compliance Homepage at www.dell.com/regulatory_compliance.
- ⚠ CAUTION:** Only a certified service technician should perform repairs on your computer. Damage due to servicing that is not authorized by Dell™ is not covered by your warranty.
- ⚠ CAUTION:** To avoid electrostatic discharge, ground yourself by using a wrist grounding strap or by periodically touching an unpainted metal surface (such as a connector on your computer).
- ⚠ CAUTION:** To help prevent damage to the system board, remove the main battery (see [Removing the Battery](#)) before working inside the computer.
-

Removing the Coin-Cell Battery


1. Follow the instructions in [Before You Begin](#).
2. Remove the battery (see [Removing the Battery](#)).
3. Remove the keyboard (see [Removing the Keyboard](#)).
4. Follow the instructions from [step 4](#) to [step 6](#) in [Removing the Hard Drive](#).
5. Remove the palm rest (see [Removing the Palm Rest](#)).
6. Disconnect the coin-cell battery cable from the connector on the system board.
7. The coin-cell battery is glued to the system board. Using a plastic scribe, gently pry the coin-cell battery off the system board.



1	coin-cell battery	2	system board connector
---	-------------------	---	------------------------

Replacing the Coin-Cell Battery

1. Follow the instructions in [Before You Begin](#).
2. With the adhesive side of the coin-cell battery facing down, press the coin-cell battery on to the system board.
3. Connect the coin-cell battery cable to the connector on the system board.
4. Replace the palm rest (see [Replacing the Palm Rest](#)).
5. Follow the instructions from [step 5](#) to [step 7](#) in [Replacing the Hard Drive](#).
6. Replace the keyboard (see [Replacing the Keyboard](#)).
7. Replace the battery (see [Replacing the Battery](#)).

 **CAUTION:** Before turning on the computer, replace all screws and ensure that no stray screws remain inside the computer. Failure to do so may result in damage to the computer.

[Back to Contents Page](#)

Processor Module

Dell™ Inspiron™ N5020/M5030 Service Manual

- [Removing the Processor Module](#)
- [Replacing the Processor Module](#)

- WARNING:** Before working inside your computer, read the safety information that shipped with your computer. For additional safety best practices information, see the Regulatory Compliance Homepage at www.dell.com/regulatory_compliance.
- CAUTION:** Only a certified service technician should perform repairs on your computer. Damage due to servicing that is not authorized by Dell™ is not covered by your warranty.
- CAUTION:** To avoid electrostatic discharge, ground yourself by using a wrist grounding strap or by periodically touching an unpainted metal surface (such as a connector on your computer).
- CAUTION:** To help prevent damage to the system board, remove the main battery (see [Removing the Battery](#)) before working inside the computer.

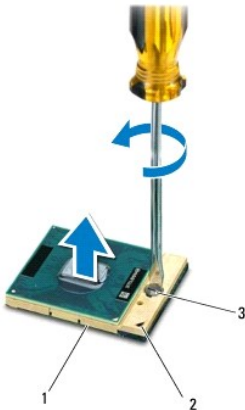
Removing the Processor Module

1. Follow the instructions in [Before You Begin](#).
2. Remove the battery (see [Removing the Battery](#)).
3. Remove the keyboard (see [Removing the Keyboard](#)).
4. Remove the palm rest (see [Removing the Palm Rest](#)).
5. Remove the processor heat sink (see [Removing the Processor Heat Sink](#)).

CAUTION: To prevent intermittent contact between the ZIF-socket cam screw and the processor when removing or replacing the processor, press to apply slight pressure to the center of the processor while turning the cam screw.

CAUTION: To avoid damage to the processor, hold the screwdriver so that it is perpendicular to the processor when turning the cam screw.

6. To loosen the ZIF socket, use a small, flat-blade screwdriver and rotate the ZIF-socket cam screw counterclockwise until it comes to the cam stop.




1	ZIF socket	2	pin-1 corner
3	ZIF-socket cam screw		

CAUTION: To ensure maximum cooling for the processor, do not touch the heat transfer areas on the processor thermal-cooling assembly. The oils in your skin can reduce the heat transfer capability of the thermal pads.


CAUTION: When removing the processor module, pull the module straight up. Be careful not to bend the pins on the processor module.

7. Lift the processor module from the ZIF socket.
-

Replacing the Processor Module

 **NOTE:** If a new processor is installed, you will receive a new thermal-cooling assembly, which will include an affixed thermal pad, or you will receive a new thermal pad along with documentation to illustrate proper installation.

1. Follow the instructions in [Before You Begin](#).
2. Align the pin-1 corner of the processor module with the pin-1 corner of the ZIF socket, then insert the processor module.

 **NOTE:** The pin-1 corner of the processor module has a triangle that aligns with the triangle on the pin-1 corner of the ZIF socket.

When the processor module is properly seated, all four corners are aligned at the same height. If one or more corners of the module are higher than the others, the module is not seated properly.

 **CAUTION:** To avoid damage to the processor module, hold the screwdriver perpendicular to the processor module when turning the cam screw.

3. Tighten the ZIF socket by turning the cam screw clockwise to secure the processor module to the system board.
4. Replace the processor heat sink (see [Replacing the Processor Heat Sink](#)).
5. Replace the palm rest (see [Replacing the Palm Rest](#)).
6. Replace the keyboard (see [Replacing the Keyboard](#)).
7. Replace the battery (see [Replacing the Battery](#)).

 **CAUTION:** Before turning on the computer, replace all screws and ensure that no stray screws remain inside the computer. Failure to do so may result in damage to the computer.

[Back to Contents Page](#)

Processor Heat Sink

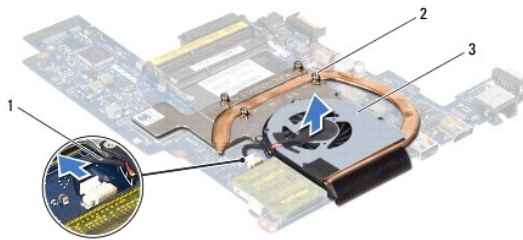
Dell™ Inspiron™ 1121 Service Manual

- [Removing the Processor Heat Sink](#)
- [Replacing the Processor Heat Sink](#)

- ⚠ **WARNING:** Before working inside your computer, read the safety information that shipped with your computer. For additional safety best practices information, see the Regulatory Compliance Homepage at www.dell.com/regulatory_compliance.
- ⚠ **WARNING:** If you remove the processor heat sink from the computer when the heat sink is hot, do not touch the metal housing of the processor heat sink.
- ⚠ **CAUTION:** Only a certified service technician should perform repairs on your computer. Damage due to servicing that is not authorized by Dell™ is not covered by your warranty.
- ⚠ **CAUTION:** To avoid electrostatic discharge, ground yourself by using a wrist grounding strap or by periodically touching an unpainted metal surface (such as a connector on your computer).
- ⚠ **CAUTION:** To help prevent damage to the system board, remove the main battery (see [Removing the Battery](#)) before working inside the computer.

Removing the Processor Heat Sink

1. Follow the instructions in [Before You Begin](#).
2. Remove the system board (see [Removing the System Board](#)).
3. Disconnect the fan cable from the system board connector.
4. Loosen the four captive screws that secure the processor heat sink to the system board in sequential order (indicated next to the captive screws).
5. Remove the processor heat sink from the system board.



1	fan cable	2	captive screws (4)
3	processor heat sink		

Replacing the Processor Heat Sink

- ✔ **NOTE:** The original thermal pad can be reused if the original processor and processor heat sink are reinstalled together. If either the processor or processor heat sink is replaced, use the thermal pad provided in the kit to ensure that thermal conductivity is achieved.
- ✔ **NOTE:** This procedure assumes that you have already removed the processor heat sink and are ready to replace it.

1. Follow the instructions in [Before You Begin](#).
2. Align the four captive screws on the processor heat sink with the screw holes on the system board and tighten the screws in sequential order (indicated next to the captive screws).
3. Connect the fan cable to the system board connector.
4. Replace the system board (see [Replacing the System Board](#)).

- ⚠ **CAUTION:** Before turning on the computer, replace all screws and ensure that no stray screws remain inside the computer. Failure to do so may result in damage to the computer.

[Back to Contents Page](#)

Display

Dell™ Inspiron™ 1121 Service Manual

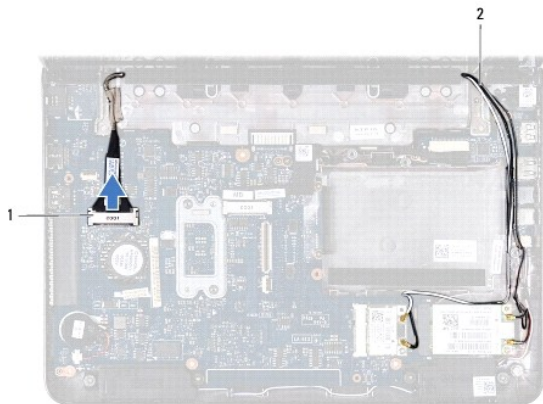
- [Display Assembly](#)
- [Display Bezel](#)
- [Display Panel](#)
- [Display-Panel Brackets](#)

- ⚠ WARNING:** Before working inside your computer, read the safety information that shipped with your computer. For additional safety best practices information, see the Regulatory Compliance Homepage at www.dell.com/regulatory_compliance.
- ⚠ CAUTION:** Only a certified service technician should perform repairs on your computer. Damage due to servicing that is not authorized by Dell™ is not covered by your warranty.
- ⚠ CAUTION:** To avoid electrostatic discharge, ground yourself by using a wrist grounding strap or by periodically touching an unpainted metal surface (such as a connector on your computer).
- ⚠ CAUTION:** To help prevent damage to the system board, remove the main battery (see [Removing the Battery](#)) before working inside the computer.
-

Display Assembly

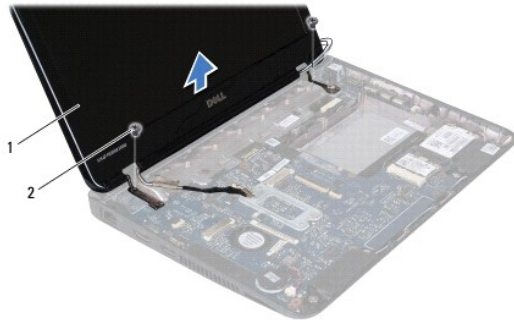
Removing the Display Assembly

1. Follow the instructions in [Before You Begin](#).
2. Remove the battery (see [Removing the Battery](#)).
3. Remove the keyboard (see [Removing the Keyboard](#)).
4. Follow the instructions from [step 4](#) to [step 6](#) in [Removing the Hard Drive](#).
5. Remove the palm rest (see [Removing the Palm Rest](#)).
6. Disconnect the Mini-Card antenna cables from the Mini-Card(s).
7. Make note of the cable routing and carefully dislodge the Mini-Card antenna cables from the routing guides.
8. Disconnect the display cable from the system board connector.



1	display cable connector	2	Mini-Card antenna cables
---	-------------------------	---	--------------------------

9. Remove the two screws (one on each side) that secure the display assembly to the computer base.
10. Lift and remove the display assembly off the computer base.



1	display assembly	2	screws (2)
---	------------------	---	------------

Replacing the Display Assembly

1. Follow the instructions in [Before You Begin](#).
2. Place the display assembly in position and replace the two screws (one on each side) that secure the display assembly to the computer base.
3. Connect the display cable to the system board connector.
4. Route the Mini-Card antenna cables through the routing guides on the computer base.
5. Connect the Mini-Card antenna cables to the Mini-Card(s).
6. Replace the palm rest (see [Replacing the Palm Rest](#)).
7. Follow the instructions from [step 5](#) to [step 7](#) in [Replacing the Hard Drive](#).
8. Replace the keyboard (see [Replacing the Keyboard](#)).
9. Replace the battery (see [Replacing the Battery](#)).

CAUTION: Before turning on the computer, replace all screws and ensure that no stray screws remain inside the computer. Failure to do so may result in damage to the computer.

Display Bezel

Removing the Display Bezel

CAUTION: The display bezel is extremely fragile. Be careful when removing it to prevent damaging the bezel.

1. Follow the instructions in [Before You Begin](#).
2. Remove the display assembly (see [Removing the Display Assembly](#)).
3. Remove the two rubber pads covering the screws on the display bezel.
4. Remove the two screws that secure the display bezel to the display back cover.
5. Using your fingertips, carefully pry up the inside edges of the display bezel to remove it from the display back cover.



1	rubber pads (2)	2	screws (2)
3	display bezel		

Replacing the Display Bezel

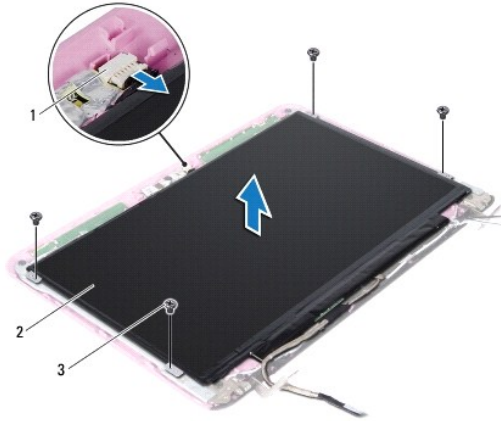
1. Follow the instructions in [Before You Begin](#).
2. Align the display bezel over the display back cover, and gently snap into place.
3. Replace the two screws that secure the display bezel to the display back cover.
4. Replace the two rubber pads that cover the display bezel screws.
5. Replace the display assembly (see [Replacing the Display Assembly](#)).

CAUTION: Before turning on the computer, replace all screws and ensure that no stray screws remain inside the computer. Failure to do so may result in damage to the computer.

Display Panel

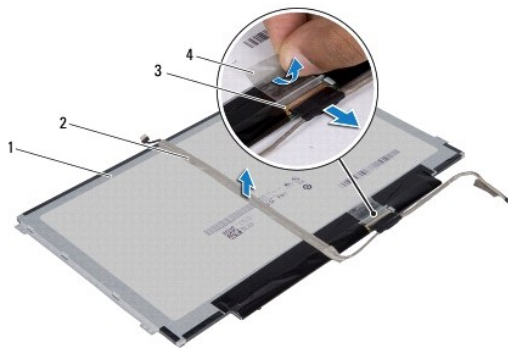
Removing the Display Panel

1. Follow the instructions in [Before You Begin](#).
2. Remove the display assembly (see [Removing the Display Assembly](#)).
3. Remove the display bezel (see [Removing the Display Bezel](#)).
4. Remove the four screws that secure the display panel to the display back cover.
5. Disconnect the camera cable from the connector on the camera module.



1	camera cable connector	2	display panel
3	screws (4)		

6. Lift the display panel off the display back cover.
7. Turn the display panel over and place it on a clean surface.
8. Peel the tape covering the display cable and lift the display cable off the back of the display panel.
9. Lift the tape that secures the display cable to the display cable connector and disconnect the display cable.



1	back of the display panel	2	display cable
3	display cable connector	4	tape

Replacing the Display Panel

1. Follow the instructions in [Before You Begin](#).
2. Connect the display cable to the display cable connector and secure it with the tape.
3. Place the display cable on the back of the display panel and secure it with the tape.
4. Turn the display panel over and place it on the display back cover.
5. Connect the camera cable to the connector on the camera module.
6. Replace the four screws that secure the display panel to the display back cover.

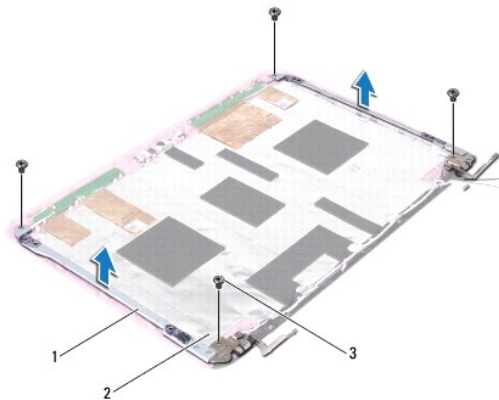
7. Replace the display bezel (see [Replacing the Display Bezel](#)).
8. Replace the display assembly (see [Replacing the Display Assembly](#)).

CAUTION: Before turning on the computer, replace all screws and ensure that no stray screws remain inside the computer. Failure to do so may result in damage to the computer.

Display-Panel Brackets

Removing the Display-Panel Brackets


1. Follow the instructions in [Before You Begin](#).
2. Remove the display assembly (see [Removing the Display Assembly](#)).
3. Remove the display bezel (see [Removing the Display Bezel](#)).
4. Remove the display panel (see [Removing the Display Panel](#)).
5. Gently peel the aluminum foil that covers the display-panel bracket screws.
6. Remove the four screws that secure the display-panel brackets to the display back cover.
7. Lift the display-panel brackets off the display back cover.



1	display-panel brackets (2)	2	aluminum foil
3	screws (4)		

Replacing the Display-Panel Brackets

1. Follow the instructions in [Before You Begin](#).
2. Place the display-panel brackets on the display back cover.
3. Replace the four screws that secure the display-panel brackets to the display back cover.
4. Adhere the aluminum foil over the display-panel bracket screws.
5. Replace the display panel (see [Replacing the Display Panel](#)).
6. Replace the display bezel (see [Replacing the Display Bezel](#)).
7. Replace the display assembly (see [Replacing the Display Assembly](#)).

 **CAUTION:** Before turning on the computer, replace all screws and ensure that no stray screws remain inside the computer. Failure to do so may result in damage to the computer.

[Back to Contents Page](#)

Hard Drive

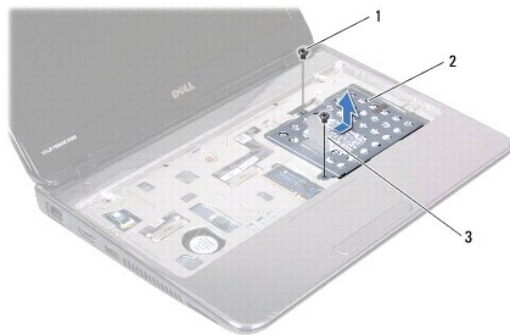
Dell™ Inspiron™ 1121 Service Manual

- [Removing the Hard Drive](#)
- [Replacing the Hard Drive](#)

- ⚠ **WARNING:** Before working inside your computer, read the safety information that shipped with your computer. For additional safety best practices information, see the Regulatory Compliance Homepage at www.dell.com/regulatory_compliance.
- ⚠ **WARNING:** If you remove the hard drive from the computer when the drive is hot, do not touch the metal housing of the hard drive.
- ⚠ **CAUTION:** Only a certified service technician should perform repairs on your computer. Damage due to servicing that is not authorized by Dell is not covered by your warranty.
- ⚠ **CAUTION:** To avoid electrostatic discharge, ground yourself by using a wrist grounding strap or by periodically touching an unpainted metal surface (such as a connector on your computer).
- ⚠ **CAUTION:** To prevent data loss, turn off your computer (see [Turning Off Your Computer](#)) before removing the hard drive. Do not remove the hard drive while the computer is On or in Sleep state.
- ⚠ **CAUTION:** To help prevent damage to the system board, remove the main battery (see [Removing the Battery](#)) before working inside the computer.
- ⚠ **CAUTION:** Hard drives are extremely fragile. Exercise care when handling the hard drive.
- 📌 **NOTE:** Dell does not guarantee compatibility or provide support for hard drives from sources other than Dell.
- 📌 **NOTE:** If you are installing a hard drive from a source other than Dell, you need to install an operating system, drivers, and utilities on the new hard drive.

Removing the Hard Drive

1. Follow the instructions in [Before You Begin](#).
 2. Remove the battery (see [Removing the Battery](#)).
 3. Remove the keyboard (see [Removing the Keyboard](#)).
 4. Remove the two screws that secure the hard-drive assembly to the computer base.
 5. Using the pull-tab, slide the hard-drive assembly to the side to disconnect it from the connector on the system board.
- ⚠ **CAUTION:** When the hard drive is not in the computer, store it in protective antistatic packaging (see "Protecting Against Electrostatic Discharge" in the safety instructions that shipped with your computer).
6. Lift the hard-drive assembly out of the computer base.



1	screws (2)	2	hard-drive assembly
3	pull-tab		

7. Remove the four screws that secure the hard-drive bracket to the hard drive.
8. Lift the hard-drive bracket off the hard drive.



1	hard-drive bracket	2	hard drive
3	screws (4)		

Replacing the Hard Drive

1. Follow the instructions in [Before You Begin](#).
2. Remove the new hard drive from its packaging.
Save the original packaging for storing or shipping the hard drive.
3. Place the hard drive in the hard-drive bracket.
4. Replace the four screws that secure the hard-drive bracket to the hard drive.
5. Place the hard-drive assembly in the computer base.
6. Using the pull-tab, slide the hard-drive assembly into the connector on the system board.
7. Replace the two screws that secure the hard-drive assembly to the computer base.
8. Replace the keyboard (see [Replacing the Keyboard](#)).
9. Replace the battery (see [Replacing the Battery](#)).

⚠ CAUTION: Before turning on the computer, replace all screws and ensure that no stray screws remain inside the computer. Failure to do so may result in damage to the computer.

10. Install the operating system for your computer, as needed. See "Restoring Your Operating System" in the *Setup Guide*.
11. Install the drivers and utilities for your computer, as needed.

[Back to Contents Page](#)

Middle Cover

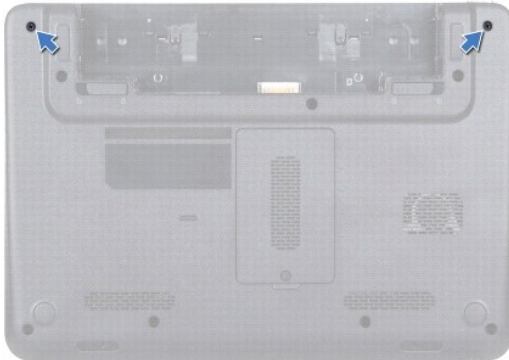
Dell™ Inspiron™ 1121 Service Manual

- [Removing the Middle Cover](#)
- [Replacing the Middle Cover](#)

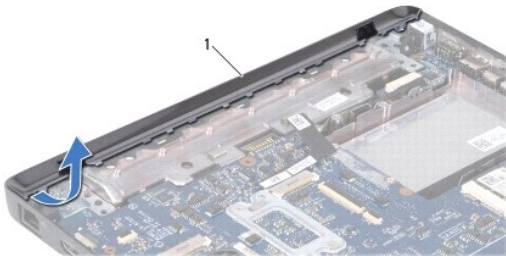
- ⚠ WARNING:** Before working inside your computer, read the safety information that shipped with your computer. For additional safety best practices information, see the Regulatory Compliance Homepage at www.dell.com/regulatory_compliance.
- ⚠ CAUTION:** To avoid electrostatic discharge, ground yourself by using a wrist grounding strap or by periodically touching an unpainted metal surface (such as a connector on your computer).
- ⚠ CAUTION:** Only a certified service technician should perform repairs on your computer. Damage due to servicing that is not authorized by Dell™ is not covered by your warranty.
- ⚠ CAUTION:** To help prevent damage to the system board, remove the main battery (see [Removing the Battery](#)) before working inside the computer.
-

Removing the Middle Cover

1. Follow the instructions in [Before You Begin](#).
2. Remove the battery (see [Removing the Battery](#)).
3. Remove the keyboard (see [Removing the Keyboard](#)).
4. Follow the instructions from [step 4](#) to [step 6](#) in [Removing the Hard Drive](#).
5. Remove the palm rest (see [Removing the Palm Rest](#)).
6. Remove the display assembly (see [Removing the Display Assembly](#)).
7. Remove the two screws that secure the middle cover to the computer base.




8. Turn the computer over.
9. Gently pry out the middle cover and remove it from the computer base.



Replacing the Middle Cover

1. Follow the instructions in [Before You Begin](#).
2. Align the tabs on the middle cover with the slots on the computer base and snap the middle cover into place.
3. Turn the computer over.
4. Replace the two screws that secure the middle cover to the computer base.
5. Replace the display assembly (see [Replacing the Display Assembly](#)).
6. Replace the palm rest (see [Replacing the Palm Rest](#)).
7. Follow the instructions from [step 5](#) to [step 7](#) in [Replacing the Hard Drive](#).
8. Replace the keyboard (see [Replacing the Keyboard](#)).
9. Replace the battery (see [Replacing the Battery](#)).

 **CAUTION:** Before turning on the computer, replace all screws and ensure that no stray screws remain inside the computer. Failure to do so may result in damage to the computer.

[Back to Contents Page](#)

Power Button Module

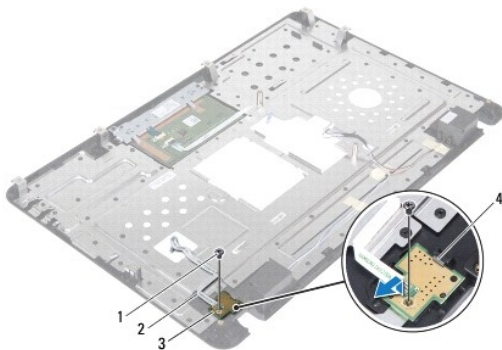
Dell™ Inspiron™ N5020/M5030 Service Manual

- [Removing the Power Button Module](#)
- [Replacing the Power Button Module](#)

- WARNING:** Before working inside your computer, read the safety information that shipped with your computer. For additional safety best practices information, see the Regulatory Compliance Homepage at www.dell.com/regulatory_compliance.
- CAUTION:** Only a certified service technician should perform repairs on your computer. Damage due to servicing that is not authorized by Dell™ is not covered by your warranty.
- CAUTION:** To avoid electrostatic discharge, ground yourself by using a wrist grounding strap or by periodically touching an unpainted metal surface (such as a connector on your computer).
- CAUTION:** To help prevent damage to the system board, remove the main battery (see [Removing the Battery](#)) before working inside the computer.
-

Removing the Power Button Module

1. Follow the instructions in [Before You Begin](#).
2. Remove the battery (see [Removing the Battery](#)).
3. Remove the keyboard (see [Removing the Keyboard](#)).
4. Remove the palm rest (see [Removing the Palm Rest](#)).
5. Turn the palm rest over.
6. Remove the screw that secures the power button module to the palm rest.
7. Peel the power button cable off the palm rest.
8. Lift and slide the power button module from under the latch.



1	screw	2	power button cable
3	power button module	4	latch

Replacing the Power Button Module

1. Follow the instructions in [Before You Begin](#).
2. Slide the power button module under the latch and align the screw hole on the power button module with the screw hole on the palm rest.


3. Replace the screw that secures the power button module to the palm rest.

4. Adhere the power button cable to the palm rest.

5. Replace the palm rest (see [Replacing the Palm Rest](#)).

6. Replace the keyboard (see [Replacing the Keyboard](#)).

7. Replace the battery (see [Replacing the Battery](#)).

 **CAUTION:** Before turning on the computer, replace all screws and ensure that no stray screws remain inside the computer. Failure to do so may result in damage to the computer.

[Back to Contents Page](#)

Keyboard

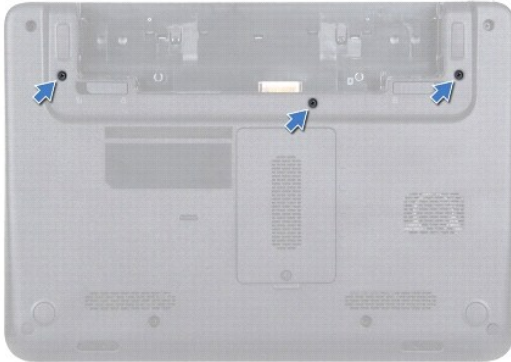
Dell™ Inspiron™ 1121 Service Manual

- [Removing the Keyboard](#)
- [Replacing the Keyboard](#)

- ⚠ **WARNING:** Before working inside your computer, read the safety information that shipped with your computer. For additional safety best practices information, see the Regulatory Compliance Homepage at www.dell.com/regulatory_compliance.
 - ⚠ **CAUTION:** Only a certified service technician should perform repairs on your computer. Damage due to servicing that is not authorized by Dell™ is not covered by your warranty.
 - ⚠ **CAUTION:** To avoid electrostatic discharge, ground yourself by using a wrist grounding strap or by periodically touching an unpainted metal surface (such as a connector on your computer).
 - ⚠ **CAUTION:** To help prevent damage to the system board, remove the main battery (see [Removing the Battery](#)) before working inside the computer.
-

Removing the Keyboard

1. Follow the instructions in [Before You Begin](#).
2. Remove the battery (see [Removing the Battery](#)).
3. Remove the three screws that secure the keyboard to the computer base.

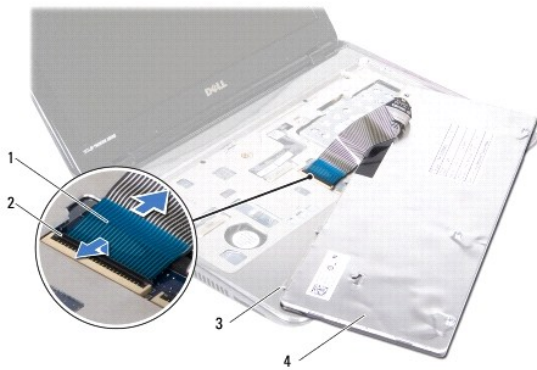


4. Turn the computer over and open the display as far as possible.
- ⚠ **CAUTION:** The keycaps on the keyboard are fragile, easily dislodged, and time-consuming to replace. Be careful when removing and handling the keyboard.
 - ⚠ **CAUTION:** Be extremely careful when removing and handling the keyboard. Failure to do so could result in scratching the display panel.
5. Slide a plastic scribe between the keyboard and palm rest and pry and lift the keyboard to disengage it from the tabs on the palm rest.



1	plastic scribe	2	keyboard
3	palm rest		


6. Carefully lift the keyboard and slide the keyboard tabs out of the slots on the palm rest.
7. Turn the keyboard over and place it on the palm rest.
8. Lift the connector latch and disconnect the keyboard cable from the connector on the system board.
9. Lift the keyboard off the palm rest.



1	keyboard cable	2	connector latch
3	keyboard tabs (5)	4	keyboard

Replacing the Keyboard

1. Follow the instructions in [Before You Begin](#).
2. Slide the keyboard cable into the connector on the system board and press down on the connector latch to secure the keyboard cable.
3. Align the tabs at the bottom of the keyboard with the slots on the palm rest and lower the keyboard into place.
4. Gently press around the edges of the keyboard to secure the keyboard under the tabs on the palm rest.
5. Close the display and turn the computer over.
6. Replace the three screws that secure the keyboard to the computer base.
7. Replace the battery (see [Replacing the Battery](#)).

 **CAUTION:** Before turning on the computer, replace all screws and ensure that no stray screws remain inside the computer. Failure to do so may result in damage to the computer.

[Back to Contents Page](#)

Memory Module(s)

Dell™ Inspiron™ 1121 Service Manual

- [Removing the Memory Module\(s\)](#)
- [Replacing the Memory Module\(s\)](#)

- ⚠ WARNING:** Before working inside your computer, read the safety information that shipped with your computer. For additional safety best practices information, see the Regulatory Compliance Homepage at www.dell.com/regulatory_compliance.
- ⚠ CAUTION:** Only a certified service technician should perform repairs on your computer. Damage due to servicing that is not authorized by Dell™ is not covered by your warranty.
- ⚠ CAUTION:** To avoid electrostatic discharge, ground yourself by using a wrist grounding strap or by periodically touching an unpainted metal surface (such as a connector on your computer).
- ⚠ CAUTION:** To help prevent damage to the system board, remove the main battery (see [Removing the Battery](#)) before working inside the computer.

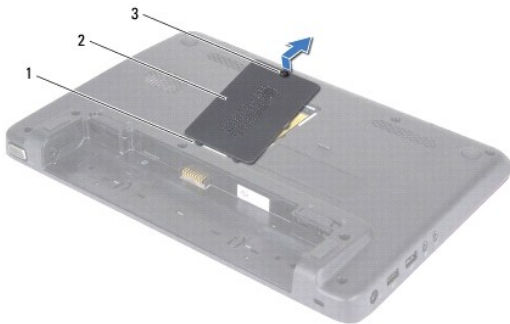
You can increase your computer memory by installing memory modules on the system board. See "Specifications" in the *Setup Guide* that shipped with your computer or at support.dell.com/manuals for information on the memory supported by your computer.

📌 NOTE: Memory modules purchased from Dell™ are covered under your computer warranty.

Your computer has two user-accessible SODIMM connectors that can be accessed from the bottom of your computer.

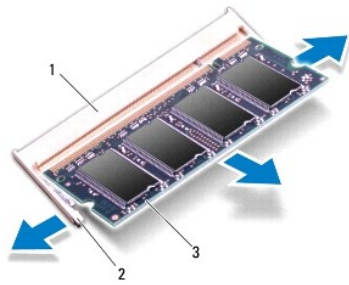
Removing the Memory Module(s)

1. Follow the instructions in [Before You Begin](#).
2. Remove the battery (see [Removing the Battery](#)).
3. Loosen the captive screw that secures the memory-module cover to the computer base.
4. Lift the memory-module cover off the computer base.



1	tabs (2)	2	memory-module cover
3	captive screw		

- ⚠ CAUTION:** To prevent damage to the memory module connector, do not use tools to spread the memory module securing clips.
5. Use your fingertips to carefully spread apart the securing clips on each end of the memory module connector until the memory module pops up.
 6. Remove the memory module from the memory-module connector.



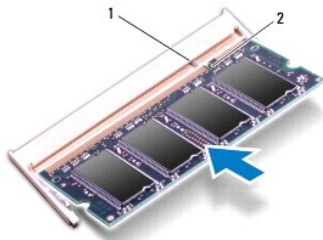
1	memory-module connector	2	securing clips (2)
3	memory module		

Replacing the Memory Module(s)

CAUTION: If you need to install memory modules in two connectors, install a memory module in the lower connector before you install a memory module in the upper connector.

1. Follow the instructions in [Before You Begin](#).
2. Align the notch in the memory module with the tab in the memory-module connector.
3. Slide the memory module firmly into the memory-module connector at a 45-degree angle, and press the memory module down until it clicks into place. If you do not hear the click, remove the memory module and reinstall it.

NOTE: If the memory module is not installed properly, the computer may not boot.



1	tab	2	notch
---	-----	---	-------

4. Slide the tabs on the memory-module cover into the slots on the computer base and gently press the memory-module cover into place.
5. Tighten the screw that secures the memory-module cover to the computer base.
6. Replace the battery (see [Replacing the Battery](#)).
7. Connect the AC adapter to your computer and an electrical outlet.
8. Turn on the computer.

As the computer boots, it detects the memory module(s) and automatically updates the system configuration information.

To confirm the amount of memory installed in the computer, click **Start** → **Control Panel** → **System and Security** → **System**.

[Back to Contents Page](#)

Wireless Mini-Card(s)

Dell™ Inspiron™ 1121 Service Manual

- [Removing the Mini-Card\(s\)](#)
- [Replacing the Mini-Card\(s\)](#)

- ⚠ **WARNING:** Before working inside your computer, read the safety information that shipped with your computer. For additional safety best practices information, see the Regulatory Compliance Homepage at www.dell.com/regulatory_compliance.
- ⚠ **CAUTION:** Only a certified service technician should perform repairs on your computer. Damage due to servicing that is not authorized by Dell™ is not covered by your warranty.
- ⚠ **CAUTION:** To avoid electrostatic discharge, ground yourself by using a wrist grounding strap or by periodically touching an unpainted metal surface (such as a connector on your computer).
- ⚠ **CAUTION:** To help prevent damage to the system board, remove the main battery (see [Removing the Battery](#)) before working inside the computer.
- ⚠ **CAUTION:** When the Mini-Card is not in the computer, store it in protective antistatic packaging (see "Protecting Against Electrostatic Discharge" in the safety instructions that shipped with your computer).
- 📌 **NOTE:** Dell does not guarantee compatibility or provide support for Mini-Cards from sources other than Dell.

If you ordered a wireless Mini-Card with your computer, the card is already installed.

Your computer has one full Mini-Card slot and one half Mini-Card slot:

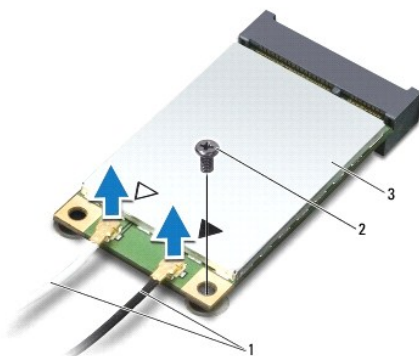
- 1 One full Mini-Card slot — supports Mobile broadband or Wireless Wide Area Network (WWAN), GPS, or TV tuner module
- 1 One half Mini-Card slot — supports Wireless Local Area Network (WLAN), WLAN/Bluetooth® combo, or Worldwide Interoperability for Microwave Access (WiMax)

- 📌 **NOTE:** Depending on the configuration of the computer when it was sold, the Mini- Card slots may or may not have Mini-Cards installed in them.

Removing the Mini-Card(s)

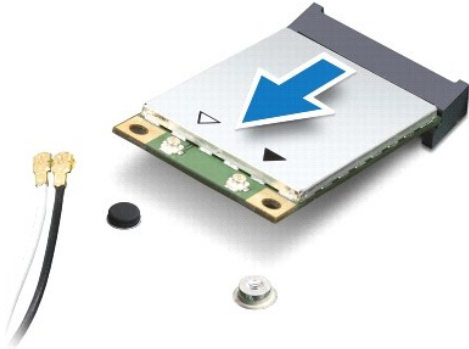
1. Follow the instructions in [Before You Begin](#).
2. Remove the battery (see [Removing the Battery](#)).
3. Remove the keyboard (see [Removing the Keyboard](#)).
4. Follow the instructions from [step 4](#) to [step 6](#) in [Removing the Hard Drive](#).
5. Remove the palm rest (see [Removing the Palm Rest](#)).
6. Disconnect the antenna cables from the Mini-Card.
7. Remove the screw that secures the Mini-Card to the system board.

- 📌 **NOTE:** Your computer can only support either one WWAN Mini-Card or one TV Tuner card in the full Mini-Card slot at a time.



1	antenna cables (2)	2	screw
3	Mini-Card		

- Lift the Mini-Card out of the system board connector.




Replacing the Mini-Card(s)

- Follow the instructions in [Before You Begin](#).
 - Remove the new Mini-Card from its packaging.
- ⚠ **CAUTION:** Use firm and even pressure to slide the card into place. If you use excessive force, you may damage the connector.
- ⚠ **CAUTION:** The connectors are keyed to ensure correct insertion. If you feel resistance, check the connectors on the card and on the system board, and realign the card.
- ⚠ **CAUTION:** To avoid damage to the Mini-Card, never place cables under the card.
- Insert the Mini-Card connector at a 45-degree angle into the appropriate system board connector. For example, the WLAN card connector is labeled **WLAN**.
 - Press the other end of the Mini-Card down into the slot on the system board and replace the screw that secures the Mini-Card to the system board.
 - Connect the appropriate antenna cables to the Mini-Card you are installing. The following table provides the antenna cable color scheme for the Mini-Cards supported by your computer.

Connectors on the Mini-Card	Antenna Cable Color Scheme
WWAN (2 antenna cables)	
Main WWAN (white triangle)	white with gray stripe
Auxiliary WWAN (black triangle)	black with gray stripe
WLAN (2 antenna cables)	
Main WLAN (white triangle)	white
Auxiliary WLAN (black triangle)	black
TV tuner (1 antenna cable)	black

- Secure the unused antenna cables in the protective mylar sleeve.
- Replace the palm rest (see [Replacing the Palm Rest](#)).
- Follow the instructions from [step 5](#) to [step 7](#) in [Replacing the Hard Drive](#).
- Replace the keyboard (see [Replacing the Keyboard](#)).
- Replace the battery (see [Replacing the Battery](#)).
- Install the drivers and utilities for your computer, as required.

 **NOTE:** If you are installing a wireless Mini-Card from a source other than Dell, you must install the appropriate drivers and utilities.

[Back to Contents Page](#)

Optical Drive

Dell™ Inspiron™ N5020/M5030 Service Manual

- [Removing the Optical Drive](#)
- [Replacing the Optical Drive](#)

- WARNING:** Before working inside your computer, read the safety information that shipped with your computer. For additional safety best practices information, see the Regulatory Compliance Homepage at www.dell.com/regulatory_compliance.
- CAUTION:** Only a certified service technician should perform repairs on your computer. Damage due to servicing that is not authorized by Dell™ is not covered by your warranty.
- CAUTION:** To avoid electrostatic discharge, ground yourself by using a wrist grounding strap or by periodically touching an unpainted metal surface (such as a connector on your computer).
- CAUTION:** To help prevent damage to the system board, remove the main battery (see [Removing the Battery](#)) before working inside the computer.
-

Removing the Optical Drive


1. Follow the instructions in [Before You Begin](#).
2. Remove the battery (see [Removing the Battery](#)).
3. Remove the keyboard (see [Removing the Keyboard](#)).
4. Remove the screw that secures the optical drive to the computer base.
5. Slide the optical drive out of the optical drive bay.



1	optical drive	2	screw
---	---------------	---	-------

Replacing the Optical Drive

1. Follow the instructions in [Before You Begin](#).
2. Slide the optical drive into the optical drive bay until it is fully seated.
3. Replace the screw that secures the optical drive to the computer base.
4. Replace the keyboard (see [Replacing the Keyboard](#)).
5. Replace the battery (see [Replacing the Battery](#)).

 **CAUTION:** Before turning on the computer, replace all screws and ensure that no stray screws remain inside the computer. Failure to do so may result in damage to the computer.

[Back to Contents Page](#)

Palm Rest

Dell™ Inspiron™ 1121 Service Manual

- [Removing the Palm Rest](#)
- [Replacing the Palm Rest](#)

- ⚠ **WARNING:** Before working inside your computer, read the safety information that shipped with your computer. For additional safety best practices information, see the Regulatory Compliance Homepage at www.dell.com/regulatory_compliance.
- ⚠ **CAUTION:** To avoid electrostatic discharge, ground yourself by using a wrist grounding strap or by periodically touching an unpainted metal surface (such as a connector on your computer).
- ⚠ **CAUTION:** Only a certified service technician should perform repairs on your computer. Damage due to servicing that is not authorized by Dell™ is not covered by your warranty.
- ⚠ **CAUTION:** To help prevent damage to the system board, remove the main battery (see [Removing the Battery](#)) before working inside the computer.

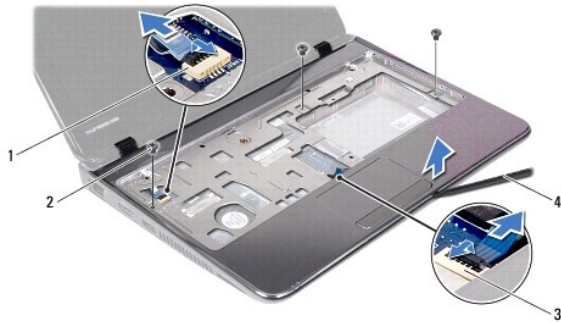
Removing the Palm Rest

1. Follow the instructions in [Before You Begin](#).
2. Remove the battery (see [Removing the Battery](#)).
3. Remove the keyboard (see [Removing the Keyboard](#)).
4. Follow the instructions from [step 4](#) to [step 6](#) in [Removing the Hard Drive](#).
5. Close the display and turn the computer over.
6. Using a plastic scribe, remove the two rubber caps that cover the palm rest screws on the computer base.
7. Remove the four screws that secure the palm rest to the computer base.



1	rubber caps (2)	2	screws (4)
---	-----------------	---	------------

8. Turn the computer over and open the display as far as possible.
 9. Remove the three screws that secure the palm rest to the computer base.
 10. Lift the connector latch and pull the pull-tab to disconnect the touch pad cable and the power button board cable from their connectors on the system board.
- ⚠ **CAUTION:** Carefully separate the palm rest from the computer base to avoid damage to the palm rest.
11. Slide a plastic scribe between the computer base and the palm rest, and pry out the palm rest off the computer base.



1	power button board cable connector	2	screws (3)
3	touch pad cable connector	4	plastic scribe

Replacing the Palm Rest

1. Follow the instructions in [Before You Begin](#).
2. Align the palm rest on the computer base and gently snap the palm rest into place.
3. Slide the touch pad cable and the power button board cable into their connectors on the system board and press down on the connector latch to secure the cables.
4. Replace the three screws that secure the palm rest to the computer base.
5. Follow the instructions from [step 5](#) to [step 7](#) in [Replacing the Hard Drive](#).
6. Replace the keyboard (see [Replacing the Keyboard](#)).
7. Close the display and turn the computer over.
8. Replace the four screws that secure the palm rest to the computer base.
9. Replace the two rubber caps that cover the palm rest screws on the computer base.
10. Replace the battery (see [Replacing the Battery](#)).

CAUTION: Before turning on the computer, replace all screws and ensure that no stray screws remain inside the computer. Failure to do so may result in damage to the computer.

[Back to Contents Page](#)

Power Button Board

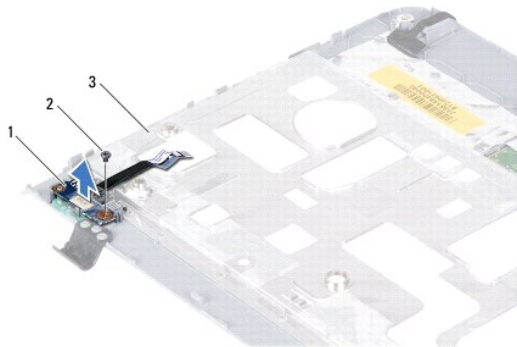
Dell™ Inspiron™ 1121 Service Manual

- [Removing the Power Button Board](#)
- [Replacing the Power Button Board](#)

- ⚠ WARNING:** Before working inside your computer, read the safety information that shipped with your computer. For additional safety best practices information, see the Regulatory Compliance Homepage at www.dell.com/regulatory_compliance.
- ⚠ CAUTION:** Only a certified service technician should perform repairs on your computer. Damage due to servicing that is not authorized by Dell™ is not covered by your warranty.
- ⚠ CAUTION:** To avoid electrostatic discharge, ground yourself by using a wrist grounding strap or by periodically touching an unpainted metal surface (such as a connector on your computer).
- ⚠ CAUTION:** To help prevent damage to the system board, remove the main battery (see [Removing the Battery](#)) before working inside the computer.
-

Removing the Power Button Board

1. Follow the instructions in [Before You Begin](#).
2. Remove the battery (see [Removing the Battery](#)).
3. Remove the keyboard (see [Removing the Keyboard](#)).
4. Follow the instructions from [step 4](#) to [step 6](#) in [Removing the Hard Drive](#).
5. Remove the palm rest (see [Removing the Palm Rest](#)).
6. Turn the palm rest over and remove the screw that secures the power button board to the palm rest.
7. Lift the power button board off the palm rest.




1	power button board	2	screw
3	back of the palm rest		

Replacing the Power Button Board

1. Follow the instructions in [Before You Begin](#).
2. Align the screw hole on the power button board with the screw hole on the palm rest.
3. Replace the screw that secures the power button board to the palm rest.
4. Replace the palm rest (see [Replacing the Palm Rest](#)).
5. Follow the instructions from [step 5](#) to [step 7](#) in [Replacing the Hard Drive](#).

6. Replace the keyboard (see [Replacing the Keyboard](#)).

7. Replace the battery (see [Replacing the Battery](#)).

 **CAUTION:** Before turning on the computer, replace all screws and ensure that no stray screws remain inside the computer. Failure to do so may result in damage to the computer.

[Back to Contents Page](#)

[Back to Contents Page](#)

Battery

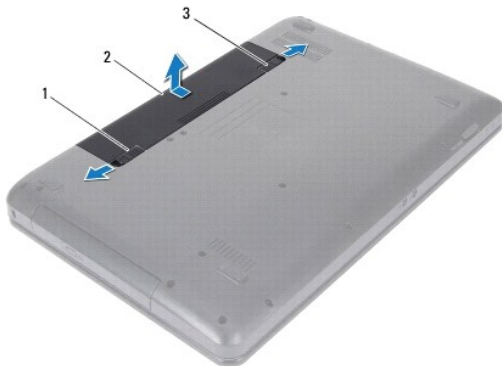
Dell™ Inspiron™ N5020/M5030 Service Manual

- [Removing the Battery](#)
- [Replacing the Battery](#)

- ⚠ WARNING:** Before working inside your computer, read the safety information that shipped with your computer. For additional safety best practices information, see the Regulatory Compliance Homepage at www.dell.com/regulatory_compliance.
- ⚠ CAUTION:** Only a certified service technician should perform repairs on your computer. Damage due to servicing that is not authorized by Dell™ is not covered by your warranty.
- ⚠ CAUTION:** To avoid electrostatic discharge, ground yourself by using a wrist grounding strap or by periodically touching an unpainted metal surface (such as a connector on your computer).
- ⚠ CAUTION:** To avoid damage to the computer, use only the battery designed for this particular Dell computer. Do not use batteries designed for other Dell computers.
-

Removing the Battery

1. Follow the instructions in [Before You Begin](#).
2. Shut down the computer and turn it over.
3. Slide the battery lock latch to the unlock position.
4. Slide the battery release latch to the side.
5. Slide and lift the battery out of the battery bay.



1	battery release latch	2	battery	3	battery lock latch
---	-----------------------	---	---------	---	--------------------

Replacing the Battery

1. Follow the instructions in [Before You Begin](#).
 2. Align the tabs on the battery with the slots on the battery bay.
 3. Slide the battery into the battery bay until it clicks into place.
 4. Slide the battery lock latch to the lock position.
-

[Back to Contents Page](#)

Speakers

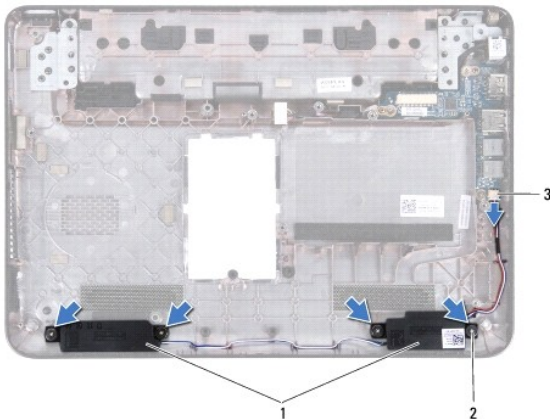
Dell™ Inspiron™ 1121 Service Manual

- [Removing the Speakers](#)
- [Replacing the Speakers](#)

- ⚠ WARNING:** Before working inside your computer, read the safety information that shipped with your computer. For additional safety best practices information, see the Regulatory Compliance Homepage at www.dell.com/regulatory_compliance.
- ⚠ CAUTION:** Only a certified service technician should perform repairs on your computer. Damage due to servicing that is not authorized by Dell™ is not covered by your warranty.
- ⚠ CAUTION:** To avoid electrostatic discharge, ground yourself by using a wrist grounding strap or by periodically touching an unpainted metal surface (such as a connector on your computer).
- ⚠ CAUTION:** To help prevent damage to the system board, remove the main battery (see [Removing the Battery](#)) before working inside the computer.

Removing the Speakers

1. Follow the instructions in [Before You Begin](#).
2. Remove the system board (see [Removing the System Board](#)).
3. Disconnect the speaker cable from the connector on the audio board.
4. Remove the four screws (two on each speaker) that secure the speakers to the computer base.
5. Lift the speakers off the computer base.



1	speakers (2)	2	screws (4)
3	speaker cable connector		

Replacing the Speakers

1. Follow the instructions in [Before You Begin](#).
 2. Place the speakers in the computer base.
 3. Replace the four screws (two on each speaker) that secure the speakers to the computer base.
 4. Connect the speaker cable to the connector on the audio board.
 5. Replace the system board (see [Replacing the System Board](#)).
- ⚠ CAUTION:** Before turning on the computer, replace all screws and ensure that no stray screws remain inside the computer. Failure to do so may result in damage to the computer.

[Back to Contents Page](#)

System Board

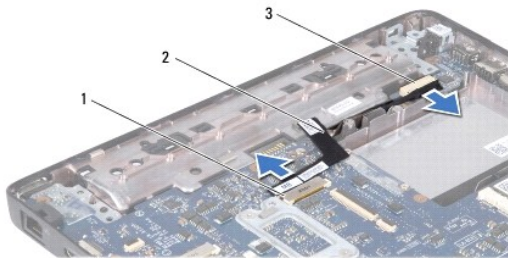
Dell™ Inspiron™ 1121 Service Manual

- [Removing the System Board](#)
- [Replacing the System Board](#)

- ⚠ WARNING:** Before working inside your computer, read the safety information that shipped with your computer. For additional safety best practices information, see the Regulatory Compliance Homepage at www.dell.com/regulatory_compliance.
- ⚠ CAUTION:** Only a certified service technician should perform repairs on your computer. Damage due to servicing that is not authorized by Dell™ is not covered by your warranty.
- ⚠ CAUTION:** To avoid electrostatic discharge, ground yourself by using a wrist grounding strap or by periodically touching an unpainted metal surface (such as a connector on your computer).
- ⚠ CAUTION:** To help prevent damage to the system board, remove the main battery (see [Removing the Battery](#)) before working inside the computer.
-

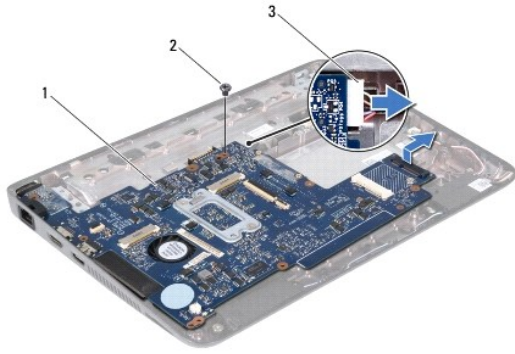
Removing the System Board

1. Follow the instructions in [Before You Begin](#).
2. Remove the battery (see [Removing the Battery](#)).
3. Remove the memory module(s) (see [Removing the Memory Module\(s\)](#)).
4. Remove the keyboard (see [Removing the Keyboard](#)).
5. Follow the instructions from [step 4](#) to [step 6](#) in [Removing the Hard Drive](#).
6. Remove the palm rest (see [Removing the Palm Rest](#)).
7. Remove the Mini-Card(s) (see [Removing the Mini-Card\(s\)](#)).
8. Remove the display assembly (see [Removing the Display Assembly](#)).
9. Remove the middle cover (see [Removing the Middle Cover](#)).
10. Disconnect the audio cable from the connectors on the system board and the audio board.



1	system board connector	2	audio cable
3	audio board connector		

11. Remove the coin-cell battery (see [Removing the Coin-Cell Battery](#)).
12. Remove the screw that secures the system board to the computer base.
13. Lift the system board up slightly and disconnect the AC adapter connector cable from the system board.
14. Lift the system board completely off the computer base.



1	system board	2	screw
3	AC adapter connector cable		

15. If you are replacing the system board, remove the processor fan and heat sink assembly (see [Removing the Processor Heat Sink](#)).

Replacing the System Board

1. Follow the instructions in [Before You Begin](#).
2. If removed, replace the processor fan and heat sink assembly (see [Replacing the Processor Heat Sink](#)).
3. Connect the AC adapter connector cable to the system board.
4. Align the connectors on the system board with the slots on the computer base, and use the alignment posts on the computer base to correctly place the system board.
5. Replace the screw that secures the system board to the computer base.
6. Replace the coin-cell battery (see [Replacing the Coin-Cell Battery](#)).
7. Connect the audio cable to the connectors on the system board and the audio board.
8. Replace the middle cover (see [Replacing the Middle Cover](#)).
9. Replace the display assembly (see [Replacing the Display Assembly](#)).
10. Replace the Mini-Card(s) (see [Replacing the Mini-Card\(s\)](#)).
11. Replace the palm rest (see [Replacing the Palm Rest](#)).
12. Follow the instructions from [step 5](#) to [step 7](#) in [Replacing the Hard Drive](#).
13. Replace the keyboard (see [Replacing the Keyboard](#)).
14. Replace the memory module(s) (see [Replacing the Memory Module\(s\)](#)).
15. Replace the battery (see [Replacing the Battery](#)).

CAUTION: Before turning on the computer, replace all screws and ensure that no stray screws remain inside the computer. Failure to do so may result in damage to the computer.

16. Turn on the computer.

NOTE: After you have replaced the system board, enter the computer's Service Tag into the BIOS of the replacement system board.

17. Enter the service tag:
- a. Ensure that the AC adapter is plugged in and that the main battery is installed properly.

- b. Press <F2> during POST to enter the system setup program.
 - c. Navigate to the **Security** tab and enter the Service Tag in the **Set Service Tag** field.
-

[Back to Contents Page](#)

[Back to Contents Page](#)

Dell™ Inspiron™ N5020/M5030 Service Manual



NOTE: A NOTE indicates important information that helps you make better use of your computer.



CAUTION: A CAUTION indicates either potential damage to hardware or loss of data and tells you how to avoid the problem.



WARNING: A WARNING indicates a potential for property damage, personal injury, or death.

Information in this document is subject to change without notice.
© 2010 Dell Inc. All rights reserved.

Reproduction of these materials in any manner whatsoever without the written permission of Dell Inc. is strictly forbidden.

Trademarks used in this text: *Dell*, the *DELL* logo, and *Inspiron* are trademarks of Dell Inc.; *Bluetooth* is a registered trademark owned by Bluetooth SIG, Inc. and is used by Dell under license; *Microsoft*, *Windows*, *Windows Vista*, and the *Windows Vista* start button logo are either trademarks or registered trademarks of Microsoft Corporation in the United States and/or other countries.

Other trademarks and trade names may be used in this document to refer to either the entities claiming the marks and names or their products. Dell Inc. disclaims any proprietary interest in trademarks and trade names other than its own.

June 2010 Rev. A00

[Back to Contents Page](#)

Free Manuals Download Website

<http://myh66.com>

<http://usermanuals.us>

<http://www.somanuals.com>

<http://www.4manuals.cc>

<http://www.manual-lib.com>

<http://www.404manual.com>

<http://www.luxmanual.com>

<http://aubethermostatmanual.com>

Golf course search by state

<http://golfingnear.com>

Email search by domain

<http://emailbydomain.com>

Auto manuals search

<http://auto.somanuals.com>

TV manuals search

<http://tv.somanuals.com>