

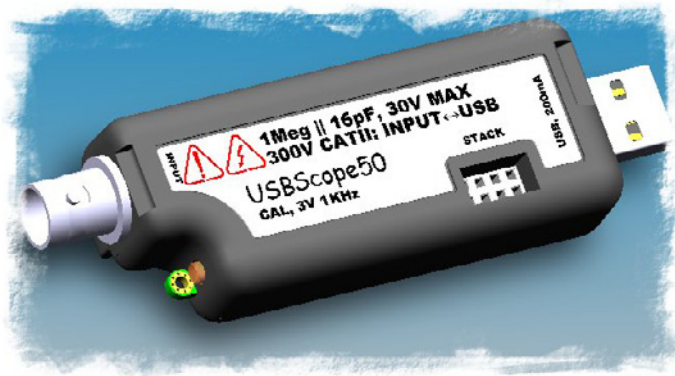


ELAN DIGITAL SYSTEMS LTD.

LITTLE PARK FARM ROAD,
SEGENSWORTH WEST,
FAREHAM,
HANTS. PO15 5SJ.
TEL: (44) (0)1489 579799
FAX: (44) (0)1489 577516
e-mail: support@pccard.co.uk
website: <http://www.pccard.co.uk>

USBscope50 USER'S GUIDE

ES370



Important Notice: Please refer to Safety Data 4.4.1, before using this instrument

All Trademarks are duly acknowledged.
The USBscope50 is Patent Pending.

REVISION HISTORY

ISSUE	PAGES	DATE	NOTES
1	30	04.07.2005	FIRST ISSUE
2	30	08.07.2005	Various additional info & spec amendments
3	31	15.07.2005	Add support for Win98 & DBCS Language's in 2K/XP
4	31	20.07.2005	Various additional info & amendments
5	39	27.09.2005	General update. Explain trigger modes, Math, FFTs etc

CONTENTS

1	OVERVIEW.....	5
2	ABOUT THE USBSCOPE50	6
2.1	General	6
2.2	USBscope50 Architecture	7
2.3	Using More Than One USBscope50.....	8
2.3.1	Assembling The Stack	8
2.3.2	Disassembling The Stack.....	10
2.3.3	USB Connections For Stacked Configurations.....	11
2.3.4	Software For Stacked Configurations.....	11
2.3.5	Stacking Do's And Don'ts	13
2.4	Input Ranges	14
2.5	Probe Compensation	15
2.6	Acquisition Modes	18
2.6.1	Single Shot	18
2.6.2	Random Interleaved Sampling.....	19
2.7	Trigger Modes.....	21
2.7.1	Auto Triggering	21
2.7.2	Normal Triggering	22
2.7.3	Free Triggering	22
2.8	Trigger Position	23
2.9	Trigger Delay	23
2.10	Trigger Threshold	25
2.11	Full Screen Plot.....	25
2.12	FFT Plot (Spectrum Analyser).....	27
2.13	Math Functions.....	28
2.14	Data Export.....	29
2.14.1	Example Data File	30
2.14.2	Example FFT File.....	31
3	SOFTWARE INSTALLATION	32
3.1	Windows 98SE and Windows Me	32
3.2	Windows 2K and XP	34

4	HARDWARE SPECIFICATION	36
4.1	Power Requirements	36
4.2	Mechanical	36
4.3	Environmental	36
4.4	Performance	37
4.4.1	Safety Data and Maximum Ratings	37
4.4.2	Static Performance	38
4.4.3	Dynamic Performance	39
4.4.4	Miscellaneous.....	39

Disclaimer

This document has been carefully prepared and checked. No responsibility can be assumed for inaccuracies. Elan reserves the right to make changes without prior notice to any products herein to improve functionality, reliability or other design aspects. Elan does not assume any liability for losses arising out of the use of any product described herein; neither does its use convey any license under its patent rights or the rights of others. Elan does not guarantee the compatibility or fitness for purpose of any product listed herein. Elan products are not authorized for use as components in life support services or systems. Elan should be informed of any such intended use to determine suitability of the products.

Software supplied with Elan PC-Cards, Compact Flash cards or USB devices is provided “as-is” with no warranty, express or implied, as to its quality or fitness for a particular purpose. Elan assumes no liability for any direct or indirect losses arising from use of the supplied code.

Copyright © 2005 Elan Digital Systems Ltd.

Federal Communications Commission (FCC) Statement

This equipment has been tested and found to comply with the limits for a Class A digital device, pursuant to Part 15 of the FCC Rules. These limits are designed to provide reasonable protection against harmful interference in a residential installation. This equipment generates, uses, and can radiate radio frequency energy and, if not installed and used in accordance with the instructions, may cause harmful interference to radio communications. However, there is no guarantee that interference will not occur in a particular installation. If this equipment does cause harmful interference to radio or television reception, which can be determined by turning the equipment off and on, the user is encouraged to try to correct the interference by one or more of the following measures:

- Reorient or relocate the receiving antenna
- Increase the separation between the equipment and receiver
- Connect the equipment into an outlet on a circuit different from that to which the receiver is connected.
- Consult an Elan authorized dealer or service representative for help.

Elan is not responsible for any radio or television interference caused by using other than recommended cables and connectors or by unauthorized changes or modifications to this equipment. Unauthorized changes or modifications could void the user's authority to operate the equipment.

This device complies with Part 15 of the FCC Rules. Operation is subject to the following two conditions (1) this device may not cause harmful interference, and (2) this device must accept any interference received, including interference that may cause undesired operation.

Listed Products

The models covered by this installation guide are intended only for installation in Listed computers for use in business or home.

1 OVERVIEW

The USBscope50 is a digital storage oscilloscope that has the following features:

- Single channel scope with BNC input and USB PC interface
- Each USBscope50 can be stacked to increase channel count (each requires its own USB connection)¹
- 300V Cat II isolation between BNC ground and USB ground²
- 50MSample/sec single shot sample rate
- 1GSample/sec equivalent sample rate³
- Timebase from 4ns/div to 4s/div in 1,2,4 steps
- 75MHz 3dB analogue bandwidth⁴
- 3000 sample points, 8-bits per sample
- Pre and post triggering, and trigger delay⁵
- AC and DC coupling
- Input sensitivities with x1 probe are 30mV/div, 300mV/div, 3V/div and with x10 probe are 300mV/div, 3V/div, 30V/div
- 1Meg input impedance, 16pF
- Channel offset control
- Auto and Normal hardware triggering with >, <, +, – modes
- Host powered from USB (200mA typ)
- Stacked configurations of 2,3 and 4 channels are supported
- Stacked configurations allow any channel to be trigger channel
- Stacked configurations have tight phase locking between channels
- Probe compensation output, 3V 1KHz
- Power/activity LED

¹ A stacking connector kit is required

² In stacked configurations the channels share a common ground at the BNC terminals

³ Suitable to measure repetitive signals that are not phase locked with the internal acquisition clock

⁴ Hardware trigger bandwidth is approximately 60MHz

⁵ Only in single-shot mode

2.1 General

The USBscope50 uses a 50MSample/sec 8-bit A-to-D converter. The A-to-D and front-end circuits that process the input waveform, and the digital stages that acquire and store the waveform are all powered from the USB host interface via an isolated supply. This means that there is no galvanic connection between the BNC ground (or BNC centre terminal), and the USB interface. When you measure a circuit and connect the scope ground clip to a voltage that is not at the same ground potential as the host computer, no current can flow and the host computer is therefore not forced to be at the same potential as the circuit under test. This clearly has major safety advantages. The USBscope50 has been designed so that up to 300V CAT II⁶, or 500V CAT I can exist between the scope ground clip and the host computer ground.

Each USBscope50 can be used as an independent single channel scope but to enhance flexibility several USBscope50s can be stacked together to make a combined 2,3 or 4-channel device. In this case, each scope is synchronised with the others so that the compound device acts like a single multi-channel instrument. Each USBscope50 still needs its own USB connection and the combined device shares a common ground between all the BNC connectors i.e. the channels are isolated from the USB but not from each other.

⁶ The CAT rating refers to how large a transient over-voltage may be when connected to the circuit in question. The USBscope50 is designed to handle a certain transient over-voltage between the BNC and the USB host i.e. across the internal isolation circuits. The CAT II UL rating defines a more severe environment than CAT I and hence larger transients are possible. This is why the isolation rating for CAT II is lower than the rating for CAT I. For further information on CAT ratings please refer to www.fluke.com

2.2 USBscope50 Architecture

The figure below shows a simplified diagram of the USBscope50.

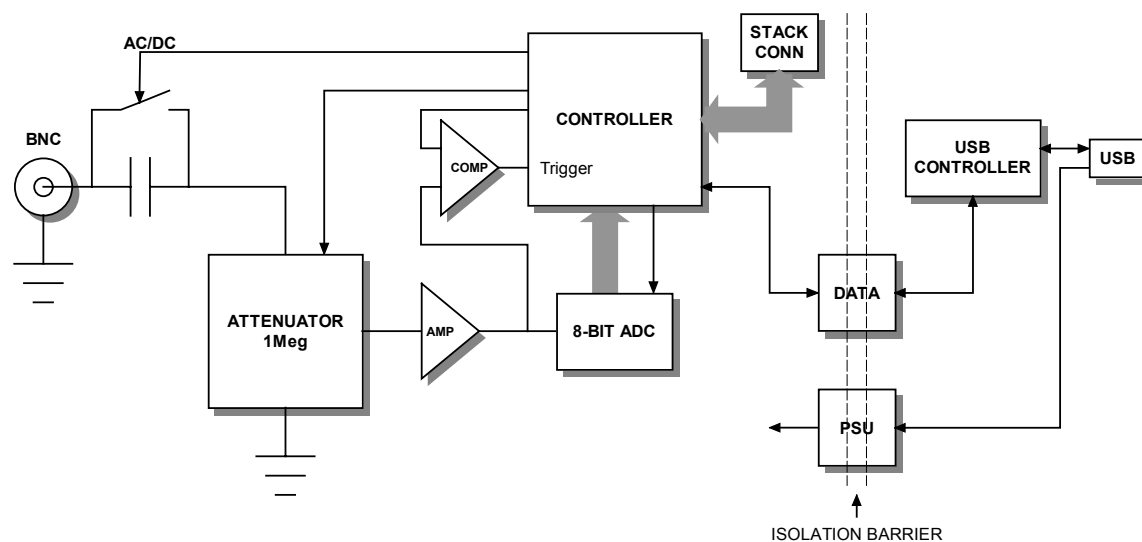
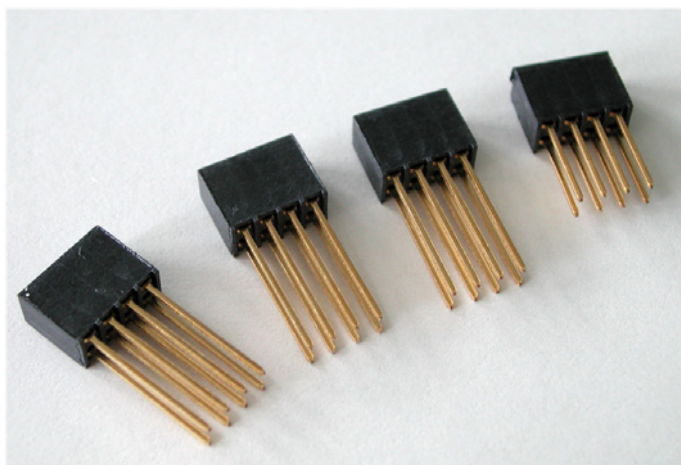


Figure 2.2-1 USBscope50 Architecture Diagram

2.3 Using More Than One USBscope50

A unique feature of the USBscope50 architecture is that up to 4 devices⁷ can be stacked to make a multi-channel instrument.

In order to use a stacked configuration, you **must purchase the stacking connector kit**. This kit comprises 3 long lead connectors and 1 short lead connector as shown:



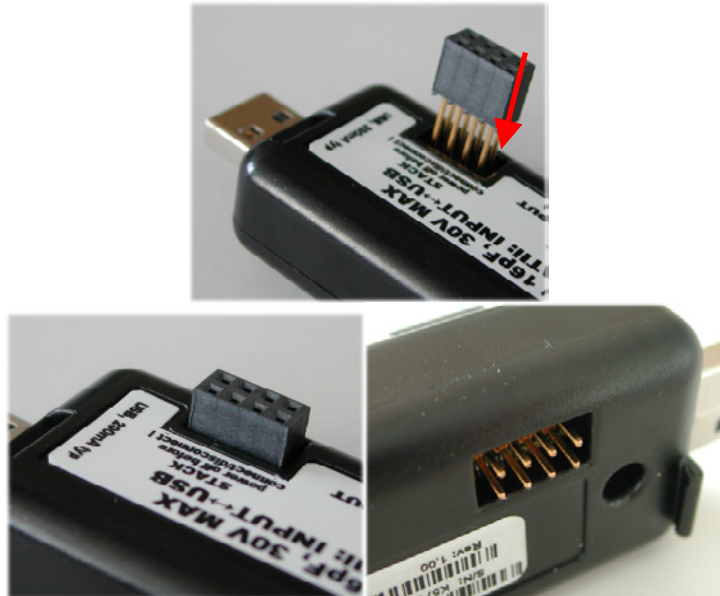
2.3.1 Assembling The Stack

To stack the USBscope50 devices, first be sure that none of them are connected to a USB port.

Before you begin, put the short lead connector to one-side...you'll use that one last.

Now, insert one of the long connectors from the top of one of the scopes (it doesn't really matter which one). Push the pins of the connector into the top of the stacking connector from the side where you can see the top of the black connector down inside the scope. Be careful when doing this, don't use too much force or you may damage the connector pins. Push the long connector all the way in until it seats down on the scope's internal connector. You should be able to see the gold pins about 2-3mm beyond the bottom surface of the scope. The connectors have no pin orientation...they can go in 2 possible ways round...both are OK.

⁷ Don't stack more than 4, the software will reject this.



Repeat this for all except the last scope to be stacked.

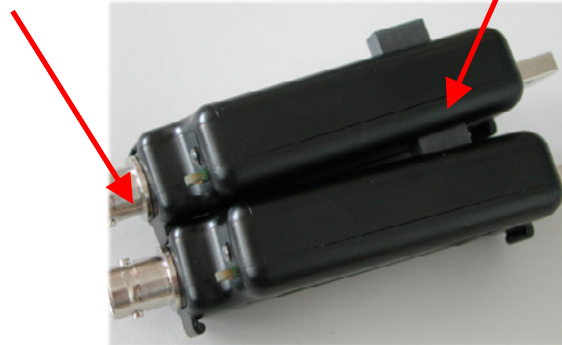
For the last scope in the stack, do the same as above but use the short length connector. This time, the pins are shorter so they stop well inside the scope's case. **This scope MUST be the bottom scope in the stack.** The reason for this is that if you use the long connector, the pins could be shorted out accidentally, or you may touch the pins when the scope is connected to a high voltage and you could get an electric shock! Similarly, if you plan to use only one scope, make sure there is no stack connector fitted or the shorter connector type is fitted.



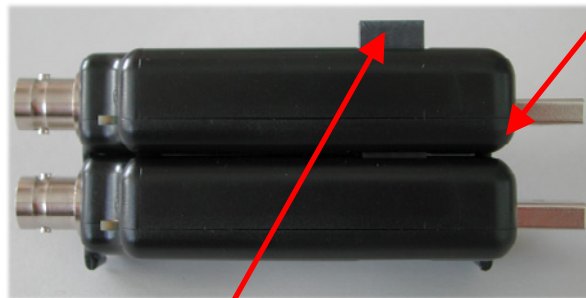
This is a safety critical point so please note it carefully.

Now you can assemble the stack.

Start with the bottom scope. Hold it in one hand, and put the next scope on top of the 1st, the same way around. Align the stacking connectors and when the stacking connectors are partly mated engage the front “P” shaped clip (BNC end) on the 2nd scope into the “P” shaped slot on the 1st scope.



Now, bring the back edge “P” clip (USB end) of the 2nd scope down until it clicks into the 1st scope’s slot. These two scopes are now mated.



Check that as you pushed the 2nd scope down, the stack connector has not been forced upward...if it has simply press it down until it seats correctly (see picture above for a guide as to the normal exposed connector depth after stacking). Repeat this for each remaining scope, adding each one on top of the previous one.

The scopes are now stacked.

2.3.2 Disassembling The Stack

Start with the top scope in the stack. Grasp the stack in one hand and with the other hand’s thumb and forefinger, pinch between the interface between the top two scopes, near the back “P” clip (USB end). With moderate force, the top scope will pop up and come free. Remove the stacking connector from the free scope.

Repeat this for all scopes in the stack.

2.3.3 USB Connections For Stacked Configurations

All stacked scopes need a USB connection. A standard hub may be useful for multi-channel stacks to get enough USB ports.

Each scope needs about 200mA. Plugging more than 2 scopes into a hub will mean that the hub may need to be powered externally. Please refer to the hub's documentation for more details about the power available per port.

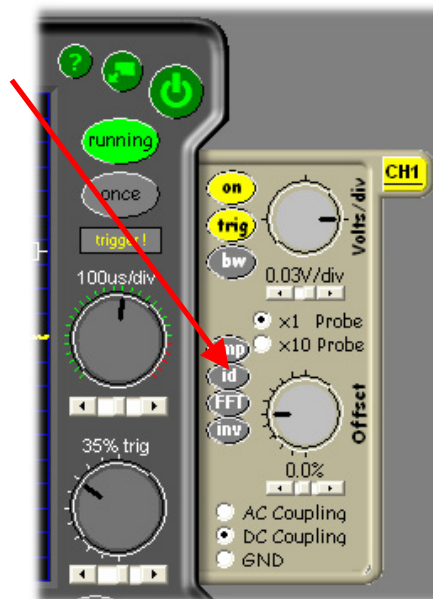
2.3.4 Software For Stacked Configurations

When you run USBscope50, it will automatically detect the scopes connected via USB and will also check to see if the scopes are electrically connected together via the stack. It will then initialise all connected scopes, one at a time. This may take a few seconds.

If you stack several scopes but forget to connect say one of the scopes to a USB port, the software will warn you and will not run.

The software will display a channel "tab" for each scope in use. The channel number allocated to each scope depends on its serial number, so the order you stacked them will almost certainly NOT be the same as the channel order allocated by software.

To find out which scope is Channel 1, use the CH1 tab and click the "id" button.



The LED on that scope will blink rapidly for about 4 seconds, or until you click the button again.

Repeat this for each channel in the stack to identify them.

If you like, you can stop the software, and unplug all the scopes from their USB connections, and then re-stack them in their channel order.

The “about” tab lists all the scopes that have been found. Click on any of the scopes in the list to see more information and an explanation of items in the list.



2.3.5 Stacking Do's And Don'ts

- Do power off all scopes (remove USB lead) before connecting and disconnecting scopes from the stack
- Don't remove any scopes from the stack while the software is running
- Don't remove any scopes from the stack while any of them are powered
- Don't stack several scopes and leave one or more scopes unstacked...this configuration will ignore the un-stacked scopes
- Don't short circuit any of the stack connector pins, or bend the pins or use excessive force trying to mate the connectors
- Don't probe or drive any of the stack connector signals
- Avoid touching the stack connector pins/signals during stacking
- Do make sure that each stack connector is properly seated in place before trying to stack another channel on top
- Don't allow water or dirt etc to enter the scope via the stack connector access hole
- Do remember that scopes in the stack **are NOT isolated from each other, they are only isolated from the USB ports. To re-iterate, stacked scopes have their BNC connector bodies connected together through the stack connector.**

2.4 Input Ranges

The USBscope50 supports 3 settings on its input attenuator.



The ranges at the BNC input depend on the type of scope probe used:

A “x1” probe causes no signal attenuation and will result in nominal full-scale input ranges of +/-0.3V, +/-3V and +/-30V. The bandwidth of x1 scope probes is generally quite low (10’s of MHz) and the circuit being measured will see a 1MegOhm load.

A “x10” probe causes a factor of ten signal attenuation and will result in nominal full-scale input ranges of +/-3V, +/-30V and +/-300V. The bandwidth of x10 scope probes is generally high (100’s of MHz) and the circuit being measured will see a 10MegOhm load.

The USBscope50 also supports AC and DC coupling:

In AC coupling mode, the input signal is passed through a capacitor prior to attenuation. The input bandwidth is around 3.4Hz up to 75MHz.

In DC coupling mode, the capacitor is bypassed and the bandwidth is DC up to 75MHz.

2.5 Probe Compensation

Before taking measurements with the USBscope50, the attached x10 scope probe must be compensated to ensure that it is matched to the scope input stage⁸.

This ensures that the probe+scope act together to keep the input frequency response as flat as possible. Using a scope probe that has not been adjusted to match the USBscope50 can lead to inaccurate readings for higher frequency signals.

The USBscope50 includes a probe compensation output⁹.



This must be turned on using the USBscope50 software. Once enabled, the compensation output is a 0 to 3V (approx) square wave with 50% duty cycle and 1KHz frequency. *Note that the compensation output will switch off automatically when you close the channel's tab*¹⁰.

The USBscope50 can work with scope probes that list an adjustment range that includes 16pF. It is best to use probes that have a range that puts the 16pF point near the middle of the range, for example the HP10071A type probe lists an adjustment range of 9-17pF and our tests show that whilst it is easy to compensate this probe against the USBscope50, the trimmer in the probe body is certainly quite close to the top end of its range. There are many probe choices on the market, and lots of them list ranges that span 16pF.¹¹

To compensate your probe follow these steps:

1. Connect your x10 probe to the USBscope50 software and run the USBscope50 software

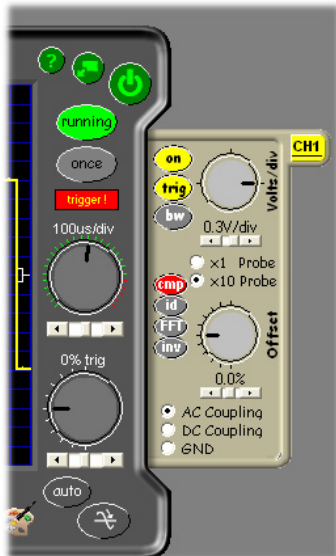
⁸ This does not apply to x1 scope probes

⁹ Later models have a dual pad compensation point that includes a GND pad

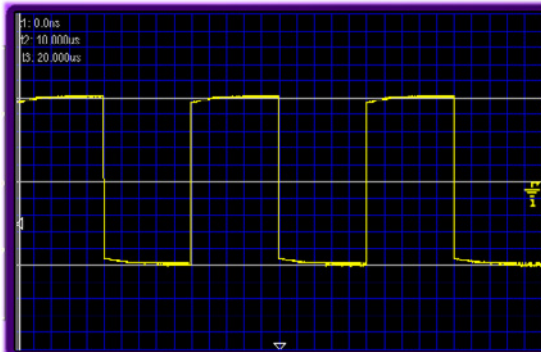
¹⁰ This is to avoid the fast edges of the square wave possibly coupling into your measurement

¹¹ Some very high frequency low capacitance probes may not be suitable for use with the USBscope50

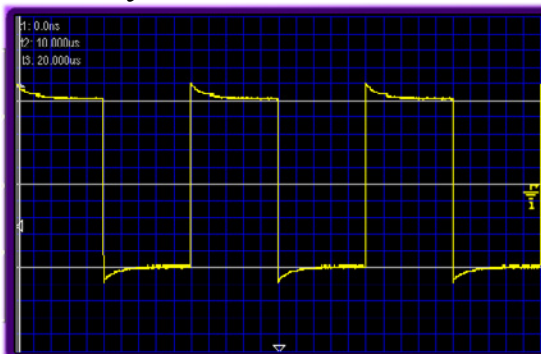
- Set the input range to 0.3V/div, x10 probe and coupling to AC
- Use the channel tab and click on the “cmp” button to turn on the compensation output



- Set the timebase to 100us/div, and set “auto” triggering, with the trigger level set to about 0%.
- Now connect your probe tip to the compensation output on the scope. You should see a square wave something like this



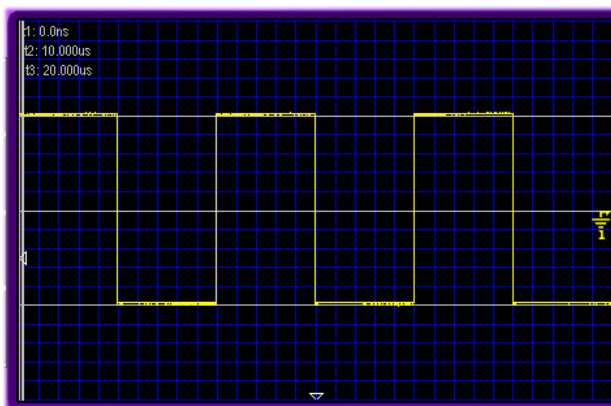
or it may look more like this



- You may find you need to connect the ground clip to either the BNC ground or use the GND pad near the compensation

output¹² to achieve a clean waveform with minimal mains “hum”

7. Now, slowly adjust the trimmer in the probe body until you achieve the best square wave shape that you can. By this we mean nice square corners and minimum over and under shoot near the edges. A small amount of over shoot is preferable to an adjustment with “curved” square wave corners: this would mean that the scope will attenuate high frequency signal components whereas a small amount of overshoot will mean that the scope will tend to slightly amplify high frequency signal components. A typical trace, after compensation will look like this.

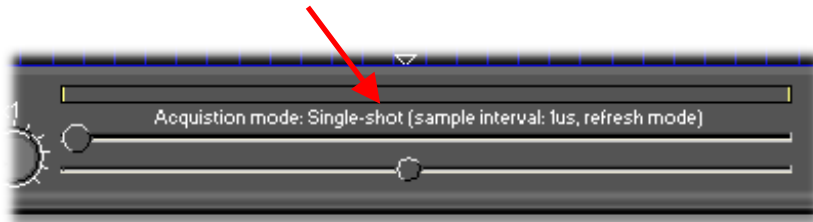


Some deviation from this is normal due to variations in probe performance. It is possible that on lower cost, lower bandwidth probes that you may see a larger amount of overshoot near the edges. This overshoot may be very narrow and seem to come and go...this is normal. Better quality scope probes have better transient response and so have smaller overshoot.

¹² Be careful not to short-circuit the GND pad to the COMP output with the ground clip. A momentary short circuit is not harmful but leaving a sustained short may damage the scope's output

2.6 Acquisition Modes

The USBscope50 can acquire waveforms in two different ways. The mode and sample interval (i.e. the time between each data point) is displayed on the main panel



2.6.1 Single Shot

In this mode, the ADC is clocked at up to 50MegaSamples/sec. Each sample is placed into the buffer and then the buffer is painted on the screen.

This mode is the one to use for non-repetitive signals i.e. single pulses, irregular bus events etc. It can also be used for repetitive waveforms.

For practical purposes the maximum frequency sine wave you can resolve is about 10MHz in this mode, giving just 5 sample points per cycle: expect to see a very “jagged” and “triangular” looking waveform when observing a 10MHz input! Drop the input frequency down to say 1MHz and you will see a nice smooth waveform.

In single shot mode the timebase can be set from 200ns/div all the way up to 4s/div. The time to acquire the waveform gets noticeably slower when rates above 40ms/div are selected: the total acquisition time is approximately “30 x timebase” so at 4s/div, the display will update once every 120s, or 2 minutes !

As with all digital storage scopes, be careful not to view a high frequency waveform on too low a timebase. You may see a waveform that looks correct but drifts or fluctuates over time, and that has the wrong frequency...this is called aliasing and is quite normal. To avoid this effect, always pick the fastest single shot timebase consistent with being able to view the waveform in question.

2.6.2 Random Interleaved Sampling

This mode is a little more complex and is suited only to observing certain types of waveform.

The USBscope50 includes special circuitry that allows it to trigger off the input waveform and also to be able to measure the time between the trigger instant and the first ADC sample that is taken. In this way, several single shot acquisitions are taken and the data points for each “sweep” are ordered based on the relative time as measured. For this to work of course, the relationship between the trigger instant and the waveform must remain constant i.e. a repetitive waveform is required like a continuous sine wave or square wave for example. It also needs the scope to be in normal trigger mode...the software automatically switches to this mode on entering RIS mode.

The software automatically sweeps the input several times before updating the display. Because each sweep happens at a random time with respect to the input waveform, the relative times measured for each sweep are also random. **So it can take a few seconds for the “picture” of the waveform to update fully.** While this acquisition process is happening, you may see some waveform displays that are not related to the actual input waveform...this is because the random nature of the sweeps means that the software may not have completely built up the picture of the signal, leaving some data from previous sweeps on the screen. This is normal. Wait a while and the waveform will update completely.

Another side-effect of the RIS mode is that because the relative sweep time measurement is “quantized” i.e. the time value is rounded up or down to place it into one of 20 possible values, or “bins”, a fast changing input signal can show small anomalies¹³ on the screen as a result...the software forces the sweep data into one or other of the bins even though the data may have been at one end of the “bin” or the other.

¹³ This may show up as small spikes that come and go, particularly near to fast changing edges. In essence the data for a particular sweep is forced to a particular place on the time axis and these data points may therefore appear to be in slightly the “wrong” place in time...showing as an error in voltage i.e. a spike. This is normal.

RIS mode is not well suited to very slow input signals or signals that have jitter. This will lead to an uncertainty in the trigger instant and hence the sweep data will appear in the wrong “bins” and so the displayed waveform will not “lock” on the screen over time.

Please note that in RIS mode it is not possible to observe the probe compensation output. This is because it is precisely phase-locked to the ADC’s clock hence there is no way to take random sweeps to build up the picture...every sweep comes out in the same bin due to the phase lock. This is normal.

2.7 Trigger Modes

The USBscope50 can use three main types of triggering. These modes are used when the “run” button or the “once¹⁴” button has been pressed causing the scope to enter the run state.



2.7.1 Auto Triggering

In this mode the acquisition begins just after the software has set up the scope. The scope will effectively free run, but it will try periodically to trigger from the input waveform. If a trigger is detected the scope will stay in a mode to enable it run as though it is in Normal mode (see below). This means the scope will lock to the waveform. If no trigger is detected the scope will carry in in a Free Run mode. Note that when you adjust the trigger threshold or the timebase, the scope will shorten the time until the next trigger test so that it can lock to the waveform more rapidly as you adjust these settings. If the scope loses lock on the waveform, you will observe a brief delay (1 to 2 seconds) before the Free Run mode is resumed.



In Auto mode, when triggering is detected, the trigger status panel will illuminate red.



¹⁴ The once button does a single acquisition and so does not perform any trigger test when in Auto mode. Effectively, using the once button in Auto mode is the same as using it in Free mode. In Norm mode, the scope will wait for the trigger event during a “once” acquisition.

It is normal for the scope to take several seconds to move from free run to triggered mode when a signal is first applied to the scope input or is changed significantly.

2.7.2 Normal Triggering

In this mode, the acquisition is primed, but will not start until the input waveform meets some criteria. This mode will cause the waveform on the screen to “lock” to an edge and so appear fixed in time. It is useful for observing regular waveforms or for doing a single triggered acquisition. If no suitable waveform is present, the scope will wait indefinitely with no display update in the meantime.



2.7.3 Free Triggering

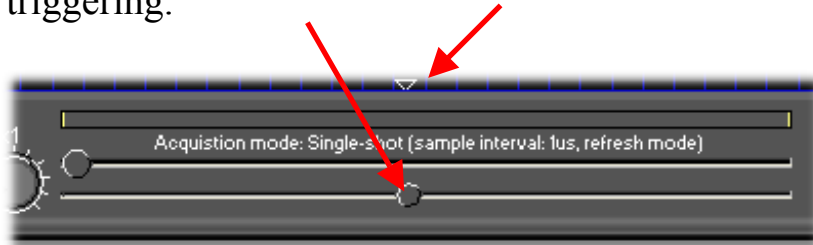
This mode is a simple Free Run (like Auto Mode) with no attempt to lock to the input waveform. It is good for checking DC levels etc. Note there are no options for edge selection as these have no effect in Free Mode.



2.8 Trigger Position

The total sample buffer is 3000 points long. The acquisition can be triggered in Auto and Norm mode from the input waveform.

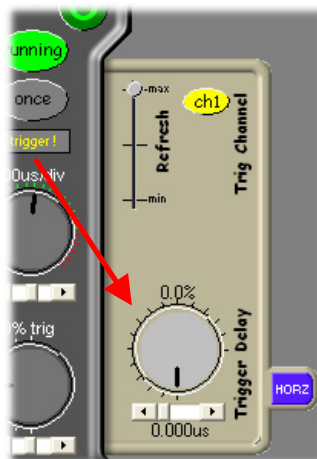
By adjusting the trigger position slider, you can make the trigger position in the buffer earlier or later in time. This is known as pre and post triggering.



Trigger position is adjustable in single-shot mode only¹⁵.

2.9 Trigger Delay

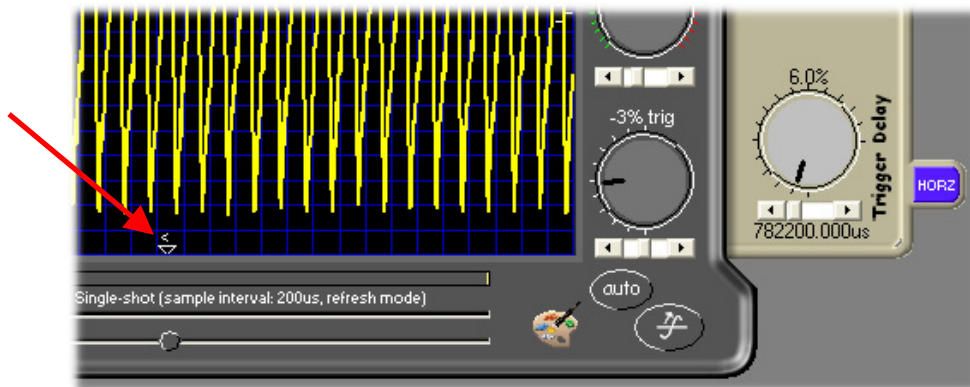
Like the trigger position setting, the trigger delay allows an amount of time to pass after the trigger instant, before the acquisition stores the sample data into the buffer. This allows you to see events that happen some time after the trigger.



The delay is adjustable in steps of the sample interval, from 0 to 65535 steps. **Adding trigger delay when using slow timebase settings further slows the time between successive sweeps.**

When delayed trigger is used, the trigger mark on the plot shows a “<” symbol.

¹⁵ By definition, RIS mode needs repetitive waveforms so pre or post trigger has no relevance.



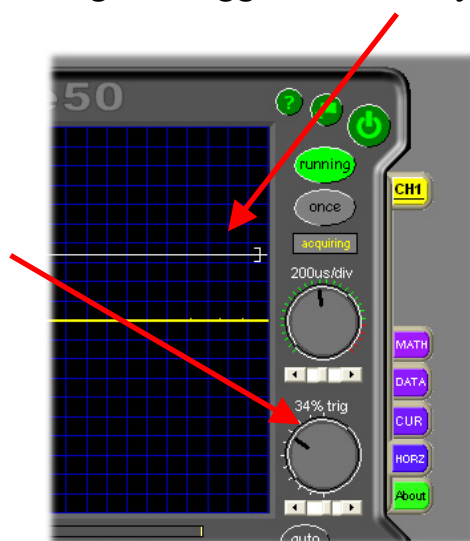
Trigger delay is effective in single-shot mode only.

Note that setting a large delay will noticeably slow the overall acquisition rate.

Also note that if you forget that you have set up a delayed trigger, it can appear that you can't find the trigger event on your waveform. Please keep note of whether there is a "<" symbol on the trigger indicator.

2.10 Trigger Threshold

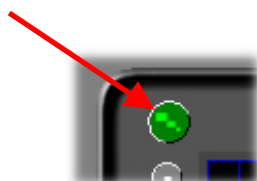
You can adjust the trigger voltage that is used for Auto and Norm Modes, either by turning the trigger knob or by clicking on the main plot.

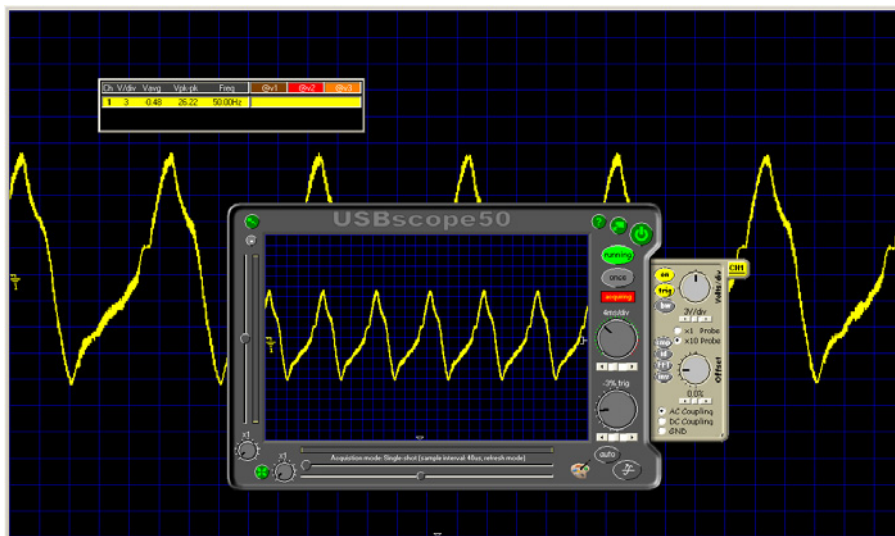


After the trigger threshold has been moved, a guide line appears on the screen for a few seconds.

2.11 Full Screen Plot

To aid viewing the time plot, a full screen mode is available. Note that when viewing the waveform at such a large scale, you will be able to see the small steps in the waveform introduced by the digitisation process. This is normal.



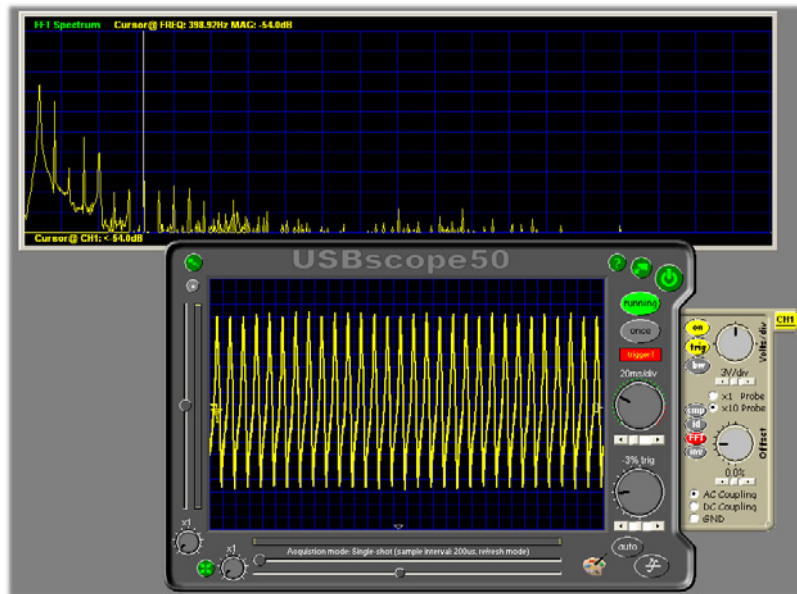


The full screen plot can be placed on top by simply left clicking it. To pop the scope back on top, click the plot with the right mouse key.

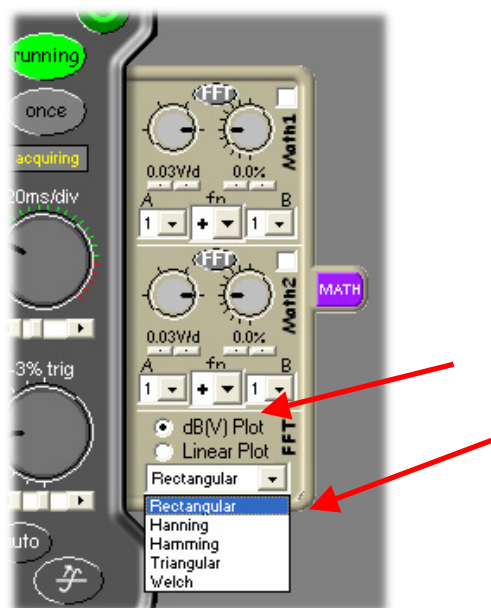
The full screen plot can be stretched to any size, and can be maximised by double clicking it.

2.12 FFT Plot (Spectrum Analyser)

Each scope channel can be analysed using a 2048 point Fast Fourier Transform. The plot will be shown in a scalable window and will include all channels selected for analysis, in their respective colours. The lower limit for the dB plot is limited to -54dB . An on-screen cross-hair type cursor allows you to measure points on the spectrum.

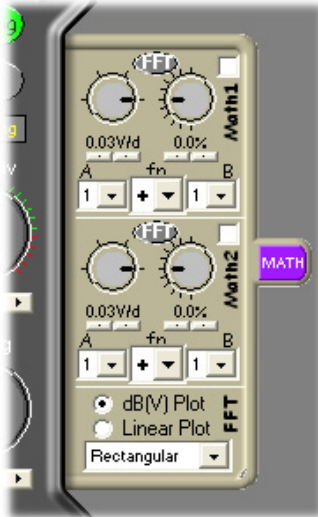


The FFT time data can be “pre-shaped” using various window functions, available under the MATH tab. There is also a selection for dB or Linear plot types on the same tab. These settings are global for all FFTs.



2.13 Math Functions

The USBscope50 includes two virtual math channels. These channels are generated using the data from two scope channels called A and B and a mathematical function, like +, - etc. The math functions are accessed under the MATH tab.



Note that the voltage range selector knobs may adjust or limit automatically. This is so that the computed math data cannot be shown in higher effective resolution than either of the two constituent channels used in the math. The practical effect of this is that if you try and turn the voltage selector for a math channel to a setting that is lower than one or both of the selected channels, the knob will jump back to the lowest setting allowed. Equally, if you adjust either of the channels involved in the maths, then the math channel selector knob will auto adjust to match the lowest setting of either channel.

The math data computed can also be FFT'd just like the regular scope channels.

IMPORTANT NOTE: The math functions use the true channel data. If you invert a channel using the “inv” button, this will have no effect on the math result. So to get ch1 minus ch2, select “A” as “1”, select “B” as “2” and select the “fn” as “-“.

2.14 Data Export

The channel data and FFT data can be saved using the DATA tab.



Simply select the channels you wish to save and click the save button. You will be prompted for a file name. The final files will be stored as:

YourSelectedName.chNdata.txt

and

YourSelectedName.chNfft.txt

where N is the channel number. FFT data will only be stored if that channel's FFT is enabled.

Remember to stop the scope before saving the data otherwise the most recent data will be saved.

Data is saved in ASCII text format and will import directly to Excel or MathCAD.

2.14.1 Example Data File

There are 3000 sets of numbers, followed by a footer that defined the acquisition mode used.

```
-5.0079  
-4.7575  
-5.0079  
-5.0079  
-4.7575  
-4.7575  
...  
-5.0079  
-4.7575  
-4.7575  
-4.7575  
-4.7575  
-4.7575
```


```
DATA FOR CH: 1  
VERTICAL FULL SCALE (+/-v): 30  
SAMPLE PERIOD (s): 0.0004  
BANDWIDTH LIMIT: False  
DATE: 21/09/2005 11:32:31  
SOFTWARE: USBscope50 Ver1.0.8
```

2.14.2 Example FFT File

There are 1024 sets of numbers, followed by a footer that defined the acquisition mode used.

-54.0
-54.0
-54.0
-54.0
-54.0
-54.0
...
-54.0
-54.0
-54.0
-54.0
-54.0
-54.0

FFT FOR CH: 1
VERTICAL FULL SCALE (+/-v): 30
FREQ STEP (Hz): 2.44140625
SPECTRAL WINDOW: Rectangular
PLOT TYPE: dB(V) Plot
DATE: 27/09/2005 18:48:39
SOFTWARE: USBscope50 Ver1.0.8



3 SOFTWARE INSTALLATION

3.1 Windows 98SE and Windows Me

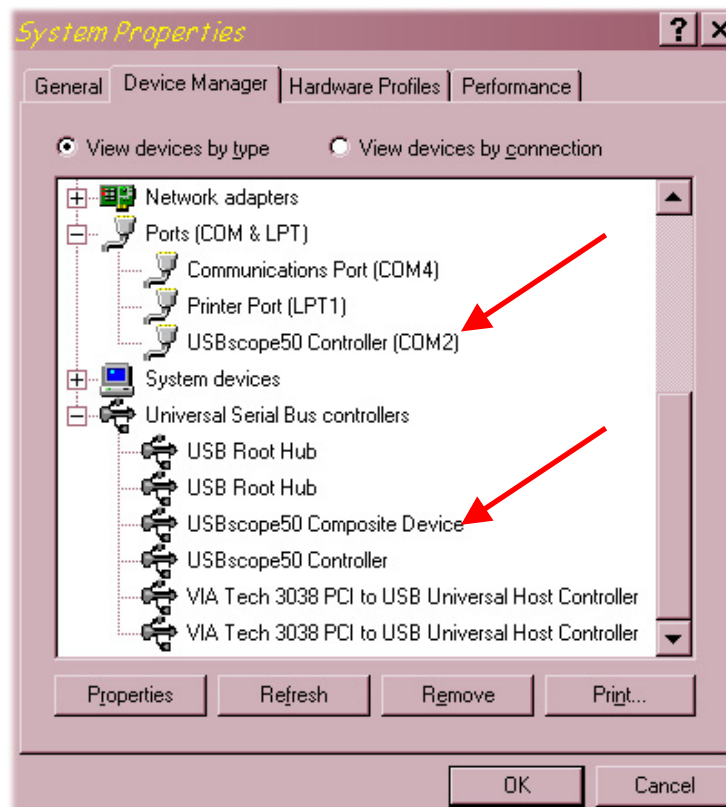
Before plugging in the hardware:

Use the supplied install CD and run the setup program. This will copy all the required files and drivers to your PC.

After running the setup program:

Insert the USBscope50 into a free USB socket, or into a USB hub port. A USB extension cable can be used if needed.

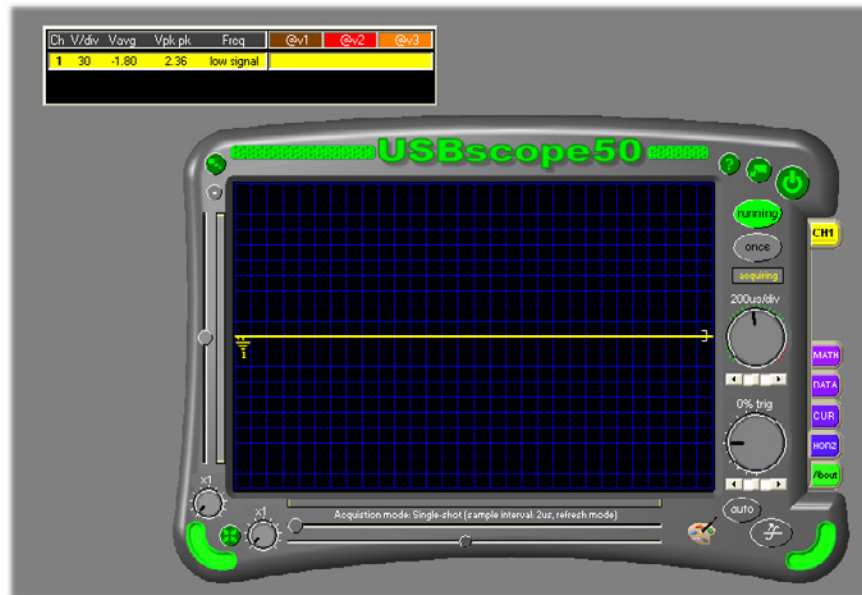
During installation, **three** new hardware devices are detected: The “*USBscope50 Composite Device*” first, followed (twice) by the “*USBscope50 Controller*” itself. **The installation is automatic and requires no user input.** After the drivers have started, you will not get any indication that everything went OK except by checking the device manager. After installation the device manager will look like this¹⁶:



¹⁶ The COM port number will be platform specific, this is just an example

Once the hardware has installed, there is no need to make any settings for the allocated COM port...the software takes care of all this at run time.

Start the USBscope50 software and you will see the following display:



To find out what the various buttons and knobs do, simply hover over them for a brief explanation.

3.2 Windows 2K and XP¹⁷

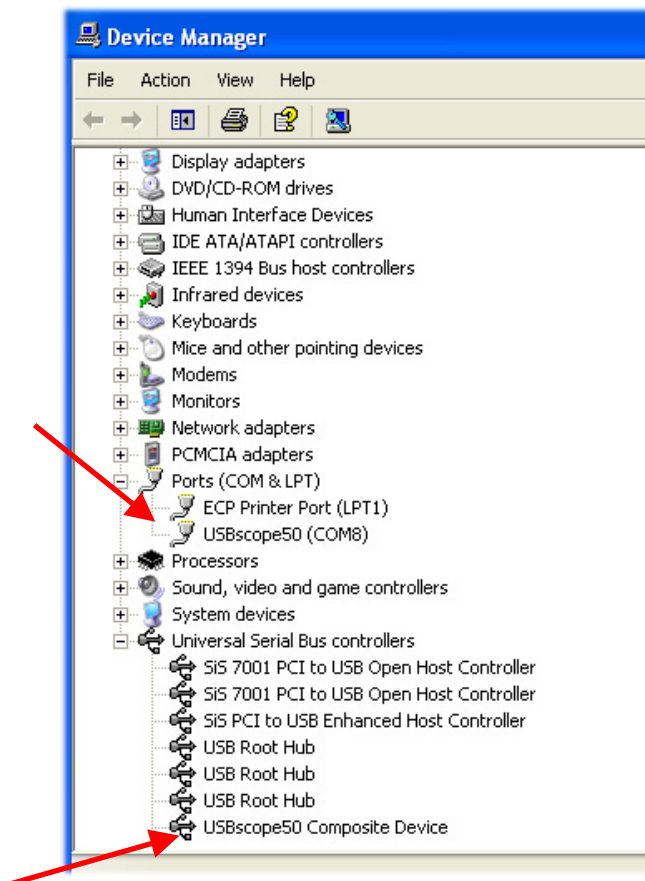
Before plugging in the hardware:

Use the supplied install CD and run the setup program. This will copy all the required files and drivers to your PC.

After running the setup program:

Insert the USBscope50 into a free USB socket, or into a USB hub port. A USB extension cable can be used if needed.

During installation, **two** hardware devices are detected: The “USBscope50 Composite Device” first, followed by the “USBscope50” itself. **It is vital to complete the installation of both devices¹⁸**. After installation the device manager will look like this¹⁹:



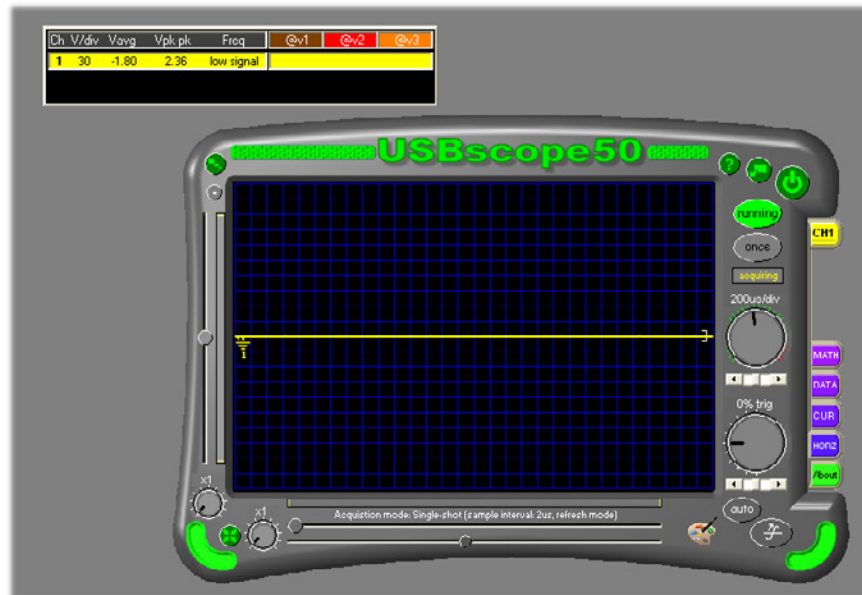
¹⁷ Include Language variants using the DBCS character mappings e.g. Chinese, Japanese, Korean etc

¹⁸ **If Windows prompts to search the Internet for a driver, select “Not this time”, and when it warns about Unsigned Drivers you MUST click on “Continue Anyway”**

¹⁹ The COM port number will be platform specific, this is just an example

Once the hardware has installed, there is no need to make any settings for the allocated COM port...the software takes care of all this at run time²⁰.

Start the USBscope50 software and you will see the following display:



To find out what the various buttons and knobs do, simply hover over them for a brief explanation.

²⁰ You may be prompted to alter the COM port number...please follow the on-screen instructions.

4 HARDWARE SPECIFICATION

All parameters typical @ 20°C unless otherwise stated

4.1 Power Requirements

Supply Voltage: 5.0V \pm 10% from host USB bus
Total Supply Current: 200mA avg

4.2 Mechanical

Mass: 42g typ.
Case Material Data: Polycarbonate (UL94V rated)
Size (typical in mm): 99.6²¹ x 30.6 x 17.5²²

4.3 Environmental

Humidity: <80% non condensing
General Operating Temperature: -10°C to +45°C Ambient
Specific Operating Temperature: 22°C \pm 3°C for rated accuracy
Full Warm Up Time: 10mins for rated accuracy
Storage Temperature: -40°C to +80°C Ambient
Operating Location: Indoor or under-cover use only
Operational Category: Cat II
Pollution Degree: 2

²¹ From BNC end to USB end

²² Not including "P" clips on base

4.4 Performance

4.4.1 Safety Data and Maximum Ratings



Important Safety Precautions

Always observe these when using the USBscope50

The USBscope50 contain no user serviceable parts inside. Do not open the plastic housing.

There may be lethal voltages inside the plastic housing. Do not use the instrument if the housing is damaged or is poorly fitting. In such a case do not connect anything to the USBscope50 to avoid a hazard. The USBscope50 will have to be repaired or replaced in such a situation.

Do not exceed the maximum ratings listed below.

Never use the instrument if it becomes damp for any reason. This includes situations where condensation has formed on the unit due to sudden temperature or humidity changes.

Never use test leads that are damaged or have insufficient or incomplete insulation.

Never allow any conductive part of any test lead to contact the host computer ground. Doing so will bypass the safety isolation in the USBscope50 and could cause a lethal hazard.

Remember that the isolation is between the BNC and the USB connectors. The BNC is, of course, at the same potential as the test lead ground clip to which it is connected. Be careful when measuring hazardous voltages not to touch the BNC connector ground for this reason²³.

Only use the shorter length stack connector in the bottom scope of the stack, and if using a single scope, don't fit any stack connector at all. This is to avoid touching the contacts

²³ This is true of almost all scopes, except that most scopes have no isolation to safety earth...in fact normal scopes connect the BNC ground **directly** to safety earth. If you were to connect a probe ground clip to an earth referenced potential you would short it out on a normal scope!

Isolation rating:	300V CAT II, 500V CAT I between BNC ground and USB ground
Transient isolation ²⁴ :	BNC ground to USB ground +/-2.5KV
Isolation capacitance ²⁵ :	1000pF typ between BNC ground and USB ground
Maximum Measured Voltage:	Between BNC center and BNC ground: +/-30V.
Absolute Maximum Input Voltage ²⁶ :	Between BNC center and BNC ground: +/-50V.

4.4.2 Static Performance

Input DC resistance:	1Meg Ohm ±2%
Input capacitance:	16pF ±10% at 1MHz
Range accuracy:	+/-0.3V range: ±4%
	+/-3.0V range: ±6%
	+/-30.0V range: ±6%
Input coupling modes:	AC, DC, GND
ADC vertical resolution:	8bit
Channel offset error:	±2% of range
Channel offset control:	±100% of range, approx 7bit resolution
Buffer depth:	3000 points
Pre-triggering:	Up to 99% of buffer depth ²⁷
Post-triggering:	Up to 100% of buffer depth ²⁷
Triggering:	Auto, normal, rising edge, falling edge, greater, less
Trigger delay:	From 0 to 65535 sample periods ²⁷
Trigger range:	±100% of range, approx 7bit resolution

²⁴ This figure derives from the 300V CAT II isolation rating and defines the peak transient voltage that can be safely tolerated between the BNC ground and the USB ground.

²⁵ This capacitance causes the impedance across the isolation barrier will reduce with frequency. This is only significant if an AC component is impressed between the BNC ground and the USB ground that is referenced to the USB ground. At 50/60Hz this impedance is approximately 3MegOhms.

²⁶ This level will saturate the scope input, and is the maximum that can be applied without causing damage to the scope. It applies regardless of the input attenuator or coupling setting.

²⁷ Single shot mode only

4.4.3 Dynamic Performance

Maximum ADC single shot rate:	50MSPS
Maximum effective sample rate ²⁸ :	1GSPS
Sample rates available:	4ns/div to 4s/div in 1,2,4 sequence
Sample rate accuracy:	0.02% typ
Stacked scope channel skew:	±2ns between any channel pair typ
Analogue 3dB bandwidth:	75MHz typ
AC coupling 3dB high pass freq:	3.4Hz typ
Analogue trigger 3dB bandwidth ²⁹ :	60MHz typ
SFDR:	50dB typ
Compensation output:	0 to 3V nominal 1KHz square wave, absolute max source/sink current 1mA

4.4.4 Miscellaneous

USB transfer rate:	USB 1.1 ³⁰ Full Speed 12Mbits/sec
USB device ID:	10C4 F001

²⁸ Using RIS mode

²⁹ The circuit involved with triggering causes the maximum input frequency that can trigger the scope to be lower than the scopes measurement channel bandwidth.

³⁰ Works in USB 1.1 or USB 2.0 hosts using the 12Mbits/sec full speed mode

Free Manuals Download Website

<http://myh66.com>

<http://usermanuals.us>

<http://www.somanuals.com>

<http://www.4manuals.cc>

<http://www.manual-lib.com>

<http://www.404manual.com>

<http://www.luxmanual.com>

<http://aubethermostatmanual.com>

Golf course search by state

<http://golfingnear.com>

Email search by domain

<http://emailbydomain.com>

Auto manuals search

<http://auto.somanuals.com>

TV manuals search

<http://tv.somanuals.com>