

333504B

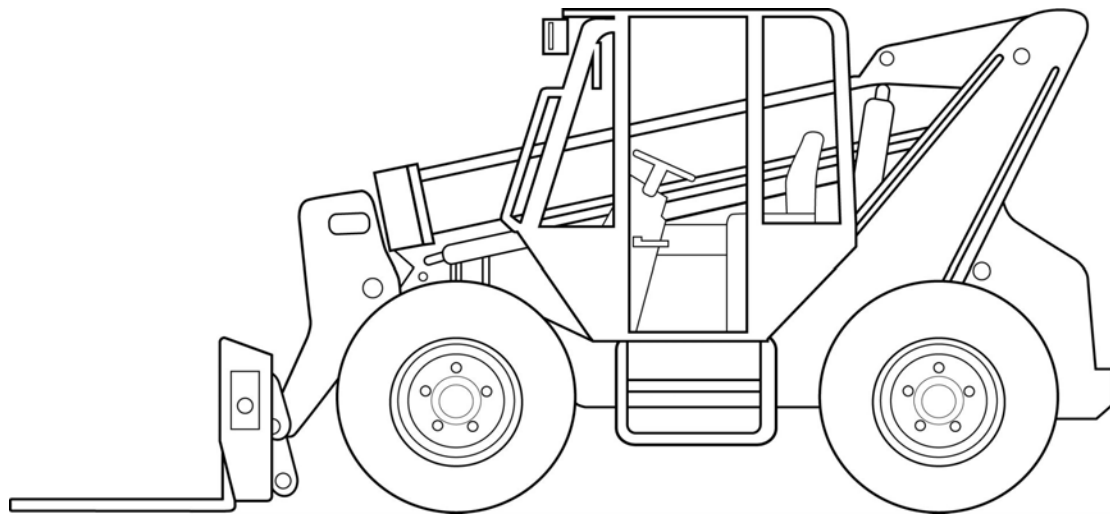
Mobile Lubrication Library Telehandler Loadall



Suggested automated lubrication system layout for Telehandler Loadall

Kit No.: 24R378, G3, USP, 21PT

Maximum System Working Pressure: 3000 psi (206 bar, 20.7 MPa)



Important Safety Information

Read all warnings and instructions in all related manuals. Save all instructions.

Related Manuals	
Manual No.	Manual Title
3A0414	G3 Pump
3A0525	Pressure Relief Valve
3A0528	Remote Manual Run
3A0860	USP Valves

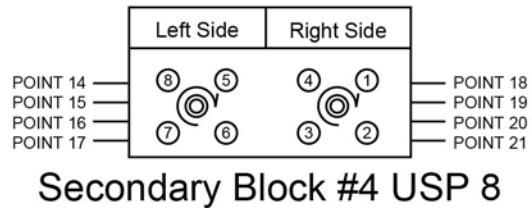
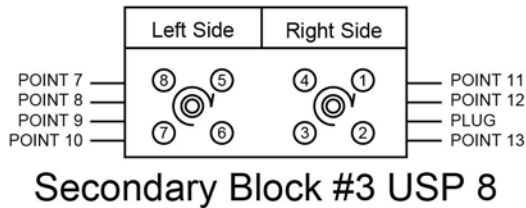
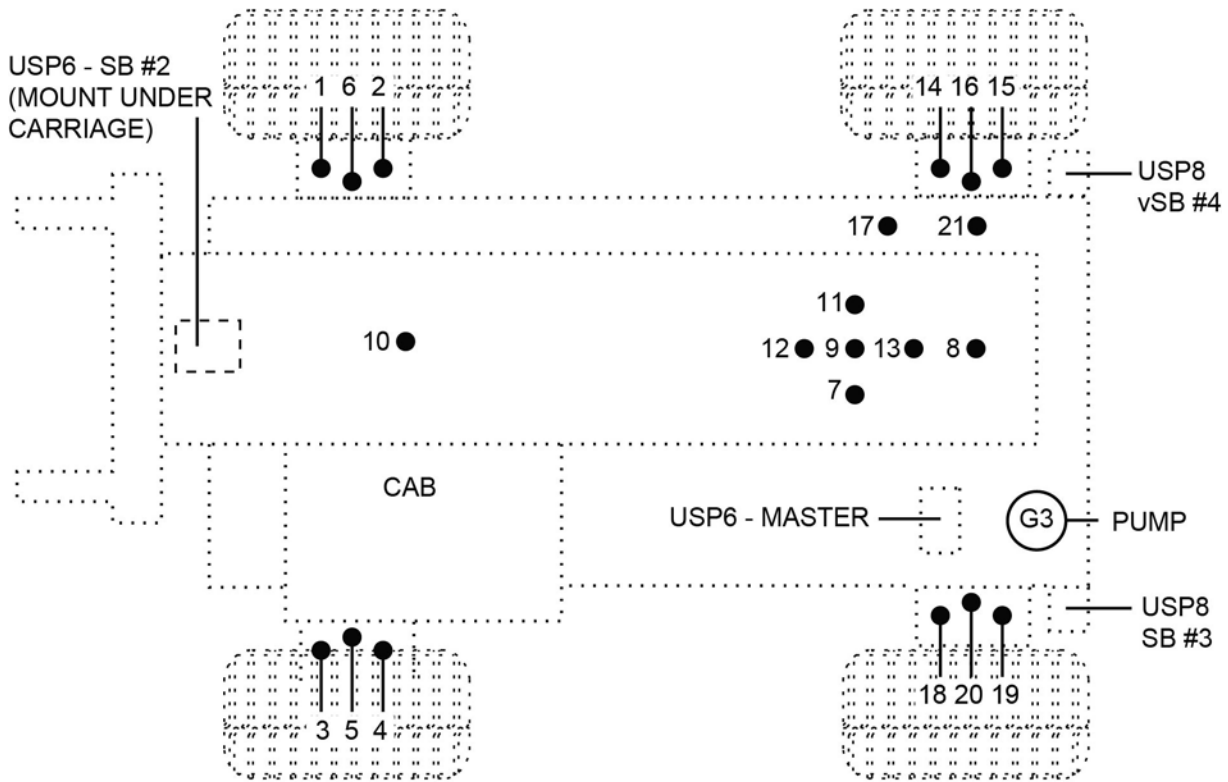
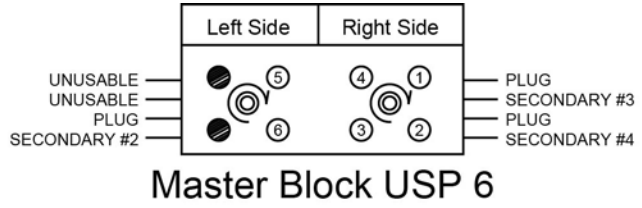
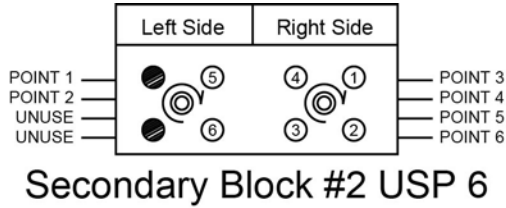
Fluid leaks from incorrectly installed or ruptured components, and/or failure to verify the components are properly installed and tested, can result in serious injury such as fluid spraying in the eyes or on skin and fluid injection, or equipment damage.						
To prevent injury or equipment damage, installation must be done by a professional and tested prior to use. Consult Parker literature for specific hose assembly instructions. These instructions are available from your Parker representative or at www.Parker.com/pdf .						

The information contained in this document is only a recommendation for an automatic lubrication system and is not intended to replace the installation and maintenance instructions provided by the original equipment manufacturer.

PROVEN QUALITY. LEADING TECHNOLOGY.

Suggested Lube Points

USP Valves

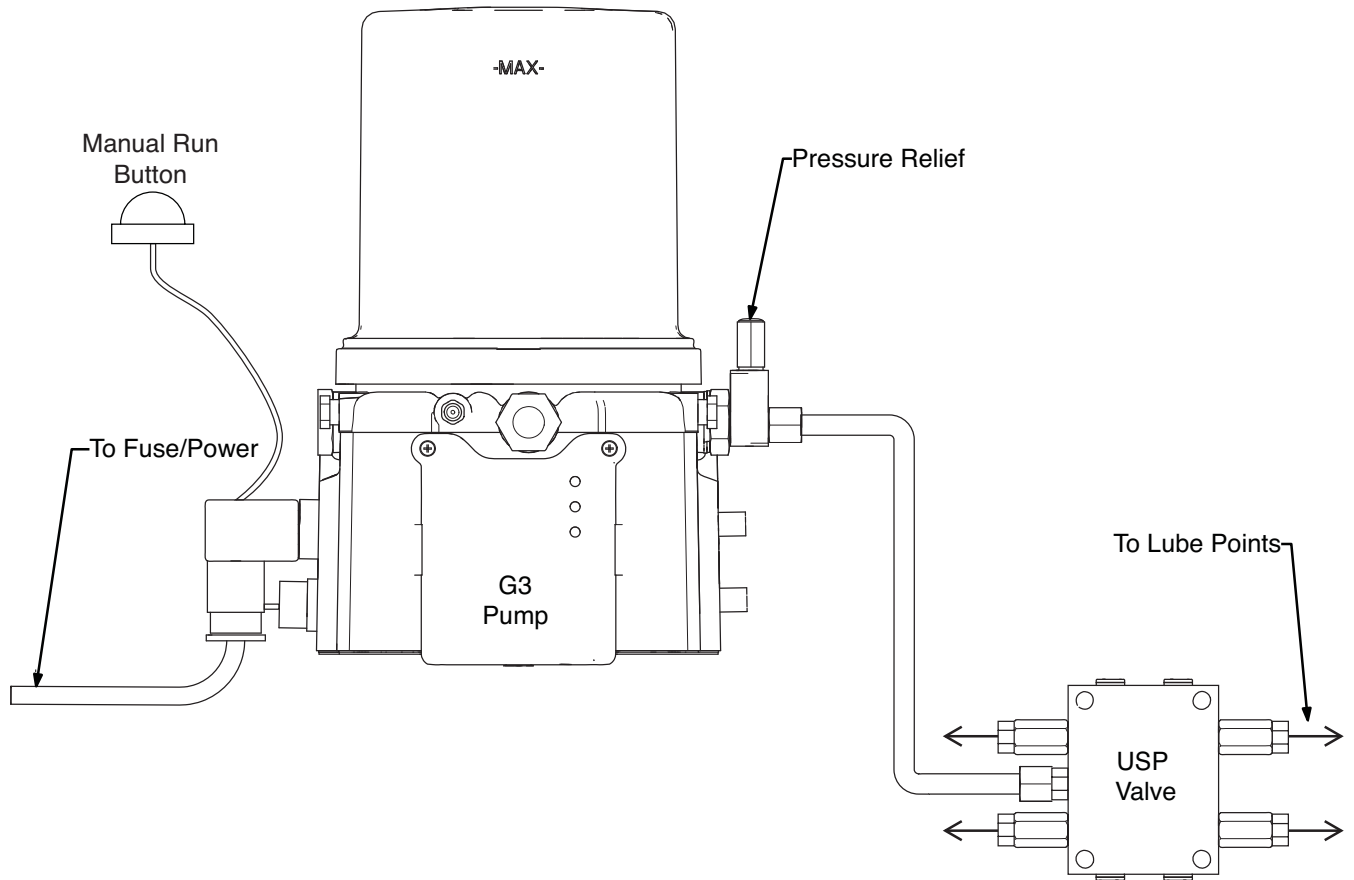


LUBE POINT INFORMATION				
Lube Point	USP Outlet	Bearing Description	USP Block	USP Volume Dispense
1	5	King pin upper right	SB#2	Single
2	6	King pin lower right	SB#2	Single
3	1	King pin upper left	SB#2	Single
4	2	King pin lower left	SB#2	Single
5	3	Steering arm left	SB#2	Single
6	4	Steering arm right	SB#2	Single
7	5	Boom pivot left	SB#3	Single
8	6	Telescope ram rear	SB#3	Single
9	7	Upper compensating ram	SB#3	Single
10	8	Main lift boom cylinder upper	SB#3	Single
11	1	Boom pivot right	SB#3	Single
12	2	Main lift boom cylinder lower	SB#3	Single
13	3 and 4	Lower compressing ram	SB#3	Double
14	5	King pin upper right	SB#4	Single
15	6	King pin lower right	SB#4	Single
16	7	Steering arm right	SB#4	Single
17	8	Trunion right	SB#4	Single
18	1	King pin upper left	SB#4	Single
19	2	King pin lower left	SB#4	Single
20	3	Steering arm left	SB#4	Single
21	4	Trunion left	SB#4	Single

24R378: Recommended Kit Parts List		
Part Number	Description	Qty
96G099	PUMP, G3-G-12MX-4L0L00-UDMVA1R2 (see manual 3A0414)	1
571036	KIT, accessory, cover	1
571028	KIT, accessory, pressure relief (see manual 3A0525)	1
24E406	KIT, valve, USP, 6 outlet (see manual 3A0860)	2
24E407	KIT, valve, USP, 8 outlet (see manual 3A0860)	2
571032	KIT, remote manual run, 12V, w/ cable (see manual 3A0528)	1
24N007	KIT, accessory, mounting, USP, 6-8	4
16U586	KIT, accessory, hose, 100 ft	1
556773	HOSE, end female swivel SAE 4 JIC	8
556763	FITTING, 4 JIC 1/8 pm	25
555749	CONNECTOR, 4 JIC 1/8 pm	30
557393	COUPLING, 1/8 fp x 1/8 mp x 1-1/4 HEX	21
556402	FITTING, 1/4 x 1/8 nptf hex	1
557349	PLUG, dryseal 1/8 nptf	4
16U587	KIT, accessory, guard, scuff, 75 ft	1
15K783	FITTING, elbow, street, 1/8	5
127009	TIE, cable, 14.75' x .31" black	4
16U982	KIT, accessory, hose, 200 ft	1
16U933	KIT, accessory, guard, scuff, 160 ft	1
24F467	PLUG, USP, doubling plug	4
557944	CLAMP, 7/16, tube 4TS6-14002	20
127012	CLAMP, hose, .375 OD hose	20
563178	COUPLING, extension 1/8 female to 1/8 male	4
127013	FITTING, swivel, JIC 37D size #4	42

USP VALVES* AND ACCESSORIES	
Part Number	Description
24E408	KIT, valve, USP, 10 outlet
24E409	KIT, valve, USP, 12 outlet
24E410	KIT, valve, USP, 14 outlet
24E411	KIT, valve, USP, 16 outlet
24N008	KIT, mounting bracket, 10-12 outlets
24N009	KIT, mounting bracket, 14-16 outlets
*see manual 3A0860	

Typical Pump Installation



Graco Information

For the latest information about Graco products, visit www.graco.com.

TO PLACE AN ORDER, contact your Graco distributor or call to identify the nearest distributor.

Phone: 612-623-6928 **or Toll Free:** 1-800-533-9655, **Fax:** 612-378-3590

*All written and visual data contained in this document reflects the latest product information available at the time of publication.
Graco reserves the right to make changes at any time without notice.*

For patent information, see www.graco.com/patents.

Original information. This manual contains English. MM 333504

Graco Headquarters: Minneapolis

International Offices: Belgium, China, Japan, Korea

GRACO INC. AND SUBSIDIARIES • P.O. BOX 1441 • MINNEAPOLIS MN 55440-1441 • USA

Copyright 2013, Graco Inc. All Graco manufacturing locations are registered to ISO 9001.

www.graco.com

August 2013, revised January 2014

Download from Www.Somanuals.com. All Manuals Search And Download.

Free Manuals Download Website

<http://myh66.com>

<http://usermanuals.us>

<http://www.somanuals.com>

<http://www.4manuals.cc>

<http://www.manual-lib.com>

<http://www.404manual.com>

<http://www.luxmanual.com>

<http://aubethermostatmanual.com>

Golf course search by state

<http://golfingnear.com>

Email search by domain

<http://emailbydomain.com>

Auto manuals search

<http://auto.somanuals.com>

TV manuals search

<http://tv.somanuals.com>