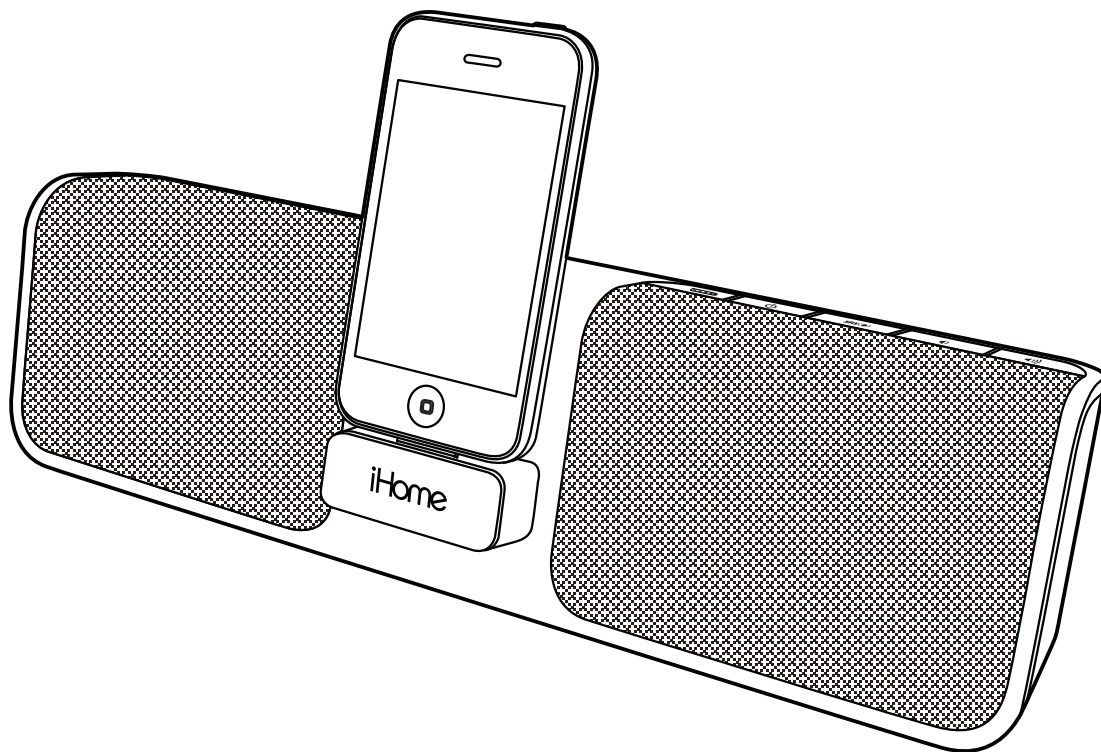


iHome®

Model iP56
**Portable Stereo Speakers for
your iPod / iPhone®**



Questions? Visit www.ihomeintl.com

Table of Contents

iP56 Quick Start	1
Controls and Indicators	2
Using the iP56	3-4
A Consumer Guide to Product Safety	5
Trouble Shooting	6
Warranty Information	7



This product bears the selective sorting symbol for waste electrical and electronic equipment (WEEE).

This means that this product must be handled pursuant to European Directive 2002/96/EC in order to be recycled or dismantled to minimize its impact on the environment.

For further information, please contact your local or regional authorities.



Electronic products not included in the selective sorting process are potentially dangerous for the environment and human health due to the presence of hazardous substances.



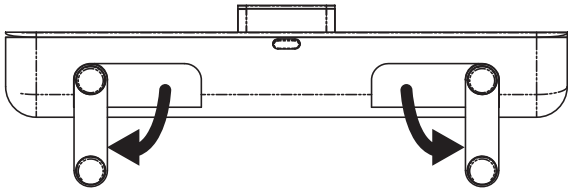
TruBass and WOW technologies are incorporated under license from SRS Labs, Inc.

Maintenance

- Place the unit on a level surface away from sources of direct sunlight or excessive heat.
- Protect your furniture when placing your unit on a natural wood and lacquered finish. A cloth or other protective material should be placed between it and the furniture.
- Clean your unit with a soft cloth moistened only with mild soap and water. Stronger cleaning agents, such as Benzene, thinner or similar materials can damage the surface of the unit.

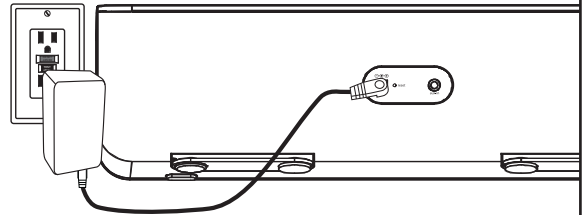
iP56 Quick Start

1: Stand



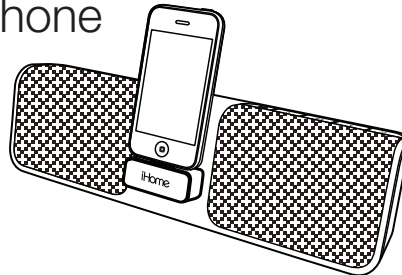
Fold out the stand feet on the bottom of the iP56, then turn unit up right for operation.

2: AC adapter



Plug the AC adapter into the DC jack on the rear of the iP56 and the other end into a working outlet. The internal battery (and docked iPhone/iPod) will charge.

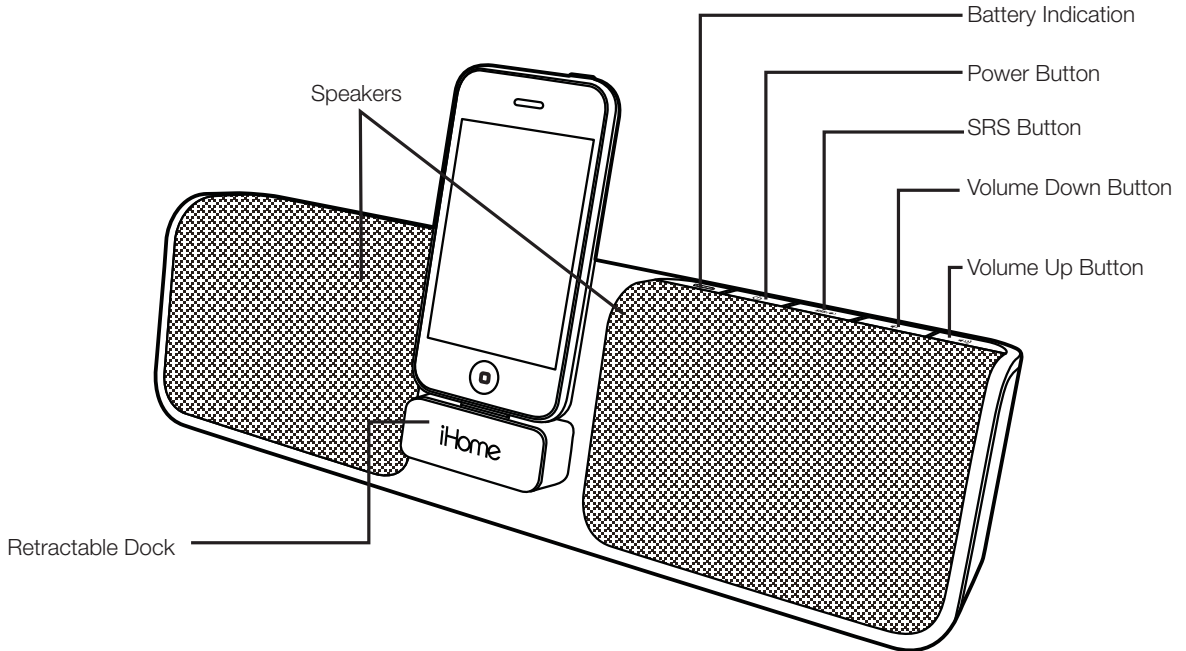
3: iPod/iPhone



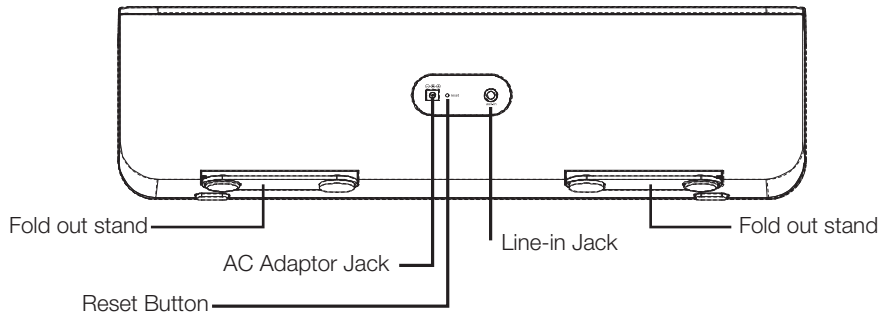
Press on the iHome name to release the retracting dock on the front of the unit. Gently dock your iPhone or iPod. Press the **⏻ Button** to turn the iP56 on. Access iPod play mode on your iPhone or iPod to listen to audio. When connected to AC power or when the internal battery is fully charged, the dock will charge your iPhone or iPod until completely charged.

Controls and Indicators

Front Panel



Rear Panel



Using the iP56

Charging & Playing iPhone and iPod

The iP56 has a retracting dock to play and charge your iPhone or iPod while connected to AC power (it will ALSO charge when operating on the internal rechargeable battery and iP56 is powered on). The dock will charge your iPhone or iPod until completely charged then stop charging.

1. Make sure the unit is connected to a working power source (AC adaptor is connected or internal battery is charged).
2. Press on the iHome name below the dock to release and access the dock (press back into unit when not in use).
3. Gently press your iPhone or iPod onto the dock. Do not force or use undue pressure. Make sure your iPhone or iPod is not in a case or "skin".
4. Press the **Power Button** located on top of the iP56 to turn the unit on. Place your iPhone or iPod in play mode. Press the **Left** or **Right** **Buttons** located on top of the unit to adjust the system volume. Press the **SRS™ Button** for enhanced bass response.

Note: Docking an already playing iPhone or iPod will also turn the iP56 on.

Charging the Internal Battery

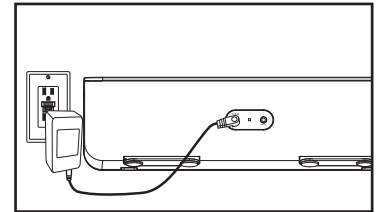
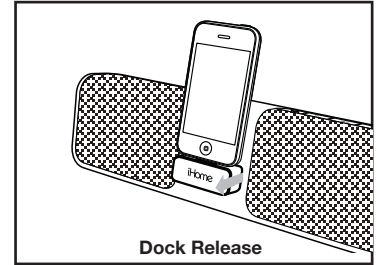
The iP56 has an internal rechargeable lithium ion battery. The battery condition indicator is located on top of the unit. When fully charged, the indicator will glow steadily. When the battery needs charging, the indicator will flash. To charge, connect the iP56 to a working AC outlet.

End-Of-Life Battery Disposal Instructions

The iP56 uses an internal Lithium-ion battery that may be recharged hundreds of times and should last the lifetime of the device. The rechargeable battery is also recyclable. The battery is permanently sealed inside the unit and is not consumer replaceable. If you find that the battery in your iP56 will no longer maintain a charge, please contact us at www.ihomeaudio.com for repair information. DO NOT attempt to replace the battery yourself. If you decide that you do not want to have your unit repaired, please do not dispose of the unit with your normal household trash. Contact your local recycling center for information on the proper disposal of products containing rechargeable batteries. In addition, many electronics stores, possibly including the store where you purchased your unit, are now accepting used electronics products containing recyclable batteries and other hazardous materials, for proper disposal and/or recycling.

Caution: The Battery used in this device may present a risk of fire, explosion or chemical burn if mistreated

Battery shall not be exposed to excessive heat such as fire, or the like. Do not use or charge the battery if it appears to be leaking, discolored, deformed, or in any way abnormal. Do not leave your battery discharged or unused for extended periods of time. When batteries are misused, they may explode or leak, causing burns and personal injury. If your battery leaks, use normal precaution and cease using the product right away.



Using the Aux Line-in Jack

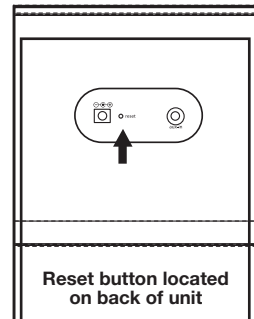
The iP56 has an aux line-in jack located on the back of the unit to play other audio devices.

1. Connect one end of a standard 3.5mm audio cable (**available at www.ihomeaudio.com**) to the aux line-in jack and the other end into the headphone or line-out jack on your audio device.
2. Press the **⏻ Button** on the iP56 to turn it on. Make sure your device is turned on, too.
3. Put your device into play mode. Press the **◀▶** or **◀▶) Buttons** to adjust the system volume. You may need to adjust the volume on your device, too.
4. Press the **⏻ Button** to turn the iP56 off. Remember to turn your device off, too.

Note: Do not play an audio device through the aux line-in jack while an iPhone or iPod is playing in the dock or you will hear both at once.

Resetting the iP56

Your iP56 was designed with a special surge protection circuit to prevent permanent damage to the unit in the event of an unexpected power surge. If your unit appears to be 'locked up' and is not operating normally, and you know that the battery is properly charged, use a straightened paper clip, toothpick, or similar object to press the RESET button, located on the back panel next to the AC jack. This will unlock the unit and restore the original factory default settings.



IMPORTANT SAFETY INSTRUCTIONS

When used in the directed manner, this unit has been designed and manufactured to ensure your personal safety. However, improper use can result in potential electrical shock or fire hazards. Please read all safety and operating instructions carefully before installation and use, and keep these instructions handy for future reference. Take special note of all warnings listed in these instructions and on the unit.

1. **Water and Moisture** – The unit should not be used near water. For example: near a bathtub, washbowl, kitchen sink, laundry tub, swimming pool or in a wet basement.
2. **Ventilation** – The unit should be situated so that its location or position does not interfere with its proper ventilation. For example, it should not be situated on a bed, sofa, rug or similar surface that may block ventilation openings. Also, it should not be placed in a built-in installation, such as a bookcase or cabinet, which may impede the flow of air through the ventilation openings.
3. **Heat** – The unit should be situated away from heat sources such as radiators, heat registers, stoves or other appliances (including amplifiers) that produce heat.
4. **Power Sources** – The unit should be connected to a power supply only of the type described in the operating instructions or as marked on the appliance.
5. **Power-Cable Protection** – Power supply cables should be routed so that they are not likely to be walked on or pinched by items placed upon or against them. It is always best to have a clear area from where the cable exits the unit to where it is plugged into an AC socket.
6. **Cleaning** – The unit should be cleaned only as recommended. See the Maintenance section of this manual for cleaning instructions.
7. **Objects and Liquid Entry** – Care should be taken so that objects do not fall and liquids are not spilled into any openings or vents located on the product.
8. **Attachments** – Do not use attachments not recommended by the product manufacturer.
9. **Lightning and Power Surge Protection** – Unplug the unit from the wall socket and disconnect the antenna or cable system during a lightning storm or when it is left unattended and unused for long periods of time. This will prevent damage to the product due to lightning and power-line surges.
10. **Overloading** – Do not overload wall sockets, extension cords, or integral convenience receptacles as this can result in a risk of fire or electric shock.
11. **Damage Requiring Service** – The unit should be serviced by qualified service personnel when:
 - A. the power supply cable or plug has been damaged.
 - B. objects have fallen into or liquid has been spilled into the enclosure.
 - C. the unit has been exposed to rain.
 - D. the unit has been dropped or the enclosure damaged.
 - E. the unit exhibits a marked change in performance or does not operate normally.
12. **Periods of Nonuse** – If the unit is to be left unused for an extended period of time, such as a month or longer, the power cable should be unplugged from the unit to prevent damage or corrosion.
13. **Servicing** – The user should not attempt to service the unit beyond those methods described in the user's operating instructions. Service methods not covered in the operating instructions should be referred to qualified service personnel.

Questions? Visit www.ihomeintl.com

Trouble Shooting

Symptom	Possible Problem	Solution
Unit doesn't respond (no power)	AC adaptor isn't plugged into a wall outlet or the connector is not plugged into the power supply jack on the back of the dock	Plug the AC adaptor into a wall outlet and plug the connector into the supply jack on the unit
	Wall outlet is not functioning or switched off	Plug another device into the same outlet to confirm the outlet is working. Make sure any associated power switch is ON
	Battery is weak/ dead	Charge internal battery by connecting AC adaptor to working outlet until battery indicator glows steadily.
iPod/iPhone does not dock properly	iPod/iPhone not docked properly	Remove your iPod/iPhone from the dock and check for obstruction on the connectors in the dock and on your iPod/iPhone. Make sure there is no "skin" or case on the iPod/iPhone. Then reseal it in the dock.
iPod/iPhone does not respond to the unit	iPod/iPhone is not docked properly	Remove your iPod/iPhone from the dock and check for obstruction on the connectors in the dock and on your iPod. Then reseal it in the dock.
	Your iPod/iPhone software is too old	Upgrade software on your iPod/iPhone via iTunes
	iPod/iPhone is locked up	Please make sure your iPod/iPhone is working properly before docking into the unit. Please refer to your iPod/iPhone manual for details.
	Using 1 st or 2 nd generation iPod, iPod shuffle or other devices.	Unit cannot control those iPod models or other devices. Use the Line-in jack to play these devices.
iPod/iPhone does not come on immediately	If your iPod/iPhone is not used for some time, it may enter deep sleep mode	Press the Menu button on your iPod/iPhone
	iPod/iPhone battery is run down or is too weak	Charge your iPod/iPhone for about 5 minutes
Unit operation is erratic	Unit requires reset	Insert the end of a paperclip or similar into the Reset port located next to the AC jack and press in for a few seconds to restore the unit to factory default settings. Doing so will overwrite any current settings.

iHome®

Free Manuals Download Website

<http://myh66.com>

<http://usermanuals.us>

<http://www.somanuals.com>

<http://www.4manuals.cc>

<http://www.manual-lib.com>

<http://www.404manual.com>

<http://www.luxmanual.com>

<http://aubethermostatmanual.com>

Golf course search by state

<http://golfingnear.com>

Email search by domain

<http://emailbydomain.com>

Auto manuals search

<http://auto.somanuals.com>

TV manuals search

<http://tv.somanuals.com>