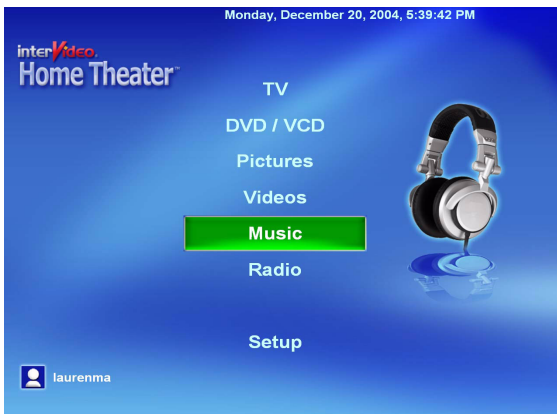


InterVideo Home Theater Quick Start Guide

Welcome to InterVideo Home Theater!

InterVideo Home Theater is your complete digital entertainment solution for you to enjoy TV viewing & recording, pictures, music, video clips and DVD/ VCD playback. It has an easy-to-use interface that can be clearly viewed from your living room TV or your PC. And with the remote control you can easily control Home Theater from the comfort of your couch. Remote control and TV features may not be available with all models.



Installation Instructions

Connecting the TV Tuner and FM Radio

(TV tuner and/or FM tuner not available with all models)

Connectors and cables required for the TV tuner may vary. You may need to purchase the appropriate adaptor, splitter, A/B switch, or combination to complete the setup of your TV tuner card or external USB device.

1. Disconnect the television signal source from your TV or VCR system.
2. Reconnect this cable to the TV tuner card cable/antenna connector on the back of your PC or external USB device.

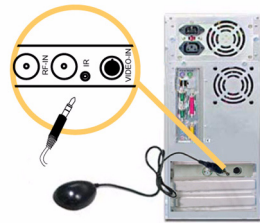
Note: *InterVideo Home Theater automatically detects whether your computer has a TV tuner card installed. If not, then the TV & Radio features will be disabled. For more information about how to connect the TV tuner card, please refer to the TV tuner card instructions from your TV tuner package.*

InterVideo Remote Control

(Remote control optional with select models)

1. Open the back cover of the remote control and insert two AAA batteries (alkaline batteries are recommended).
2. Plug the remote control receiver into the IR port of tuner card or any available USB port on your computer (depends on remote control model).

Your remote control is ready to use.



Note: *When using the remote control make sure that there is nothing blocking the path between the remote control and the receiver unit.*

Getting Started

Starting Home Theater

- On the desktop, double-click the shortcut button.
- In the Start Menu, select Programs > InterVideo Home Theater > InterVideo Home Theater.
- On the remote control, press Home Theater button.



Starting the Applications

- From the Home Page, select the application with your mouse or the arrow keys on the keyboard.
- From the remote control, press the corresponding button to each application - DVD/VCD, TV, Pictures, Videos, Music, Radio.

Getting Help

Click the Help button on any display window to obtain help.

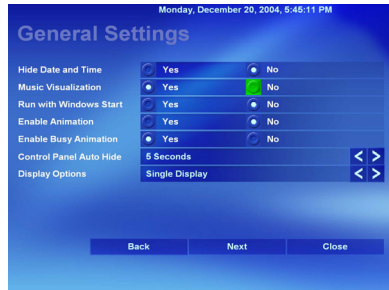


Setup

The first time Home Theater is launched the Setup wizard will run. Follow the steps to set your preferences for TV, pictures, music, and video.

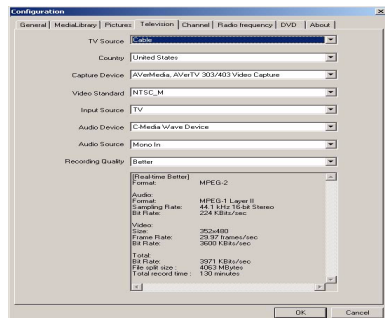
1. For basic setup, open the Setup wizard as follows:

- Launch Home Theater from the home page
- Move the cursor (remote control mouse pad or arrow keys) to select the **Setup** button.
- Follow the steps through the Setup wizard to set your Home Theater preferences.



2. Access the advanced setup configurations as follows:

- From the Windows taskbar
 - Click the **Start Menu**.
 - Point to **Programs**.
 - Point to **InterVideo Home Theater**.
 - Click **Home Theater Config**.
- The Configuration dialog box contains tabs for
 - General
 - Media Library
 - Pictures
 - TV
 - Channel
 - TxtEpg
 - DVD
 - Information



Note: To set the path for your pictures, music, video files, use the Media Library tab within the configuration dialog box to change the path from the default path: C:\Documents and Settings\User Name\My Documents\..... or C:\Documents and Settings\All Users\Documents\.....

Using InterVideo Home Theater DVD/VCD

(DVD/VCD feature requires a DVD or CD drive installed)

Playback

- Insert a DVD or VCD in DVD or CD drive.
- Press **Play** or the spacebar.

Karaoke

- Insert a Karaoke VCD, SVCD or DVD disc.
- Plug in a microphone.
- Press **Karaoke** to select Left, Right or Both Vocal



Note: The Karaoke button is enabled in DVD menu automatically once you insert a Karaoke disc

TV

(TV feature requires a TV tuner and signal. TV is not available in all versions)

Setting Channel Line Up

- Select the **Settings** button.
- Select **Auto Scan** to search for available channels.
- Select Input Sources: antenna and cable feeds for a television source, or S-Video and composite to connect a camcorder or VCR, etc.

Watching TV

- To easily find the show you're looking for, select the **Channel Surfing** button to preview 16 channels.
- Change channels with remote control or keyboard (Page Up/Down).

Scheduling a Show to Record

- Select **Schedule**.
- Input program name, channel, time, date, and recording quality information to set recording.

Teletext (The Teletext button is automatically enabled in the TV menu if you are in a supported region)

- From the TV main page, select **Teletext** (Teletext button is enabled in TV menu automatically if the country where you are in supports teletext).
- Teletext provides channel and program information.

Electronic Program Guide (not available in all countries)

- From the TV main page, select **Guide**.
- EPG provides channel listings and program information.



Pictures

Thumbnail images of the pictures stored in the directory selected are displayed. Pictures in the My Pictures folder are shown by default if no other folder has been selected during Setup. To add new files or folders, please reference the advance setup configuration option.

Playback Slideshow

- To organize your pictures select **Sort by Name** or **Sort by Date**.
- Highlight the picture(s) that you would like to view using the check/uncheck button on the remote control.
- Select **Play** to start the slideshow.
- If slideshow music was selected during setup, then music will begin. To set it now, select Settings.



Other Media

- Home Theater will auto detect any picture files saved in the removable devices plugged into your PC, including CD-ROM, DVD-ROM, and USB Flash Drive.
- Select **Other Media** to view picture files saved in your CD/VCD/DVD disc and USB Flash Drive.

Print

- To print a picture press the **Print** button on the remote control or select Print Picture from the Picture main page.

Note: The Print button may not be available for all versions.

Videos

Thumbnail images of the videos stored in the directory selected are displayed. Videos in the My Videos folder are shown by default if no other folder has been selected during Setup. To add new files or folders, please reference the advance setup configuration option.

Playback

- Add path to your Media Library (Videos of files stored in the “My Videos” directory are displayed. To add files from additional directories, use the configurator utility as described above).
- Selected locations will be scanned for video files to be displayed on screen.
- To organize your videos select **Sort by Name** or **Sort by Date**.
- Highlight the video clip you would like to view using the check/uncheck button on the remote control.
- Select **Play** to start the video clip.



Music

Media Library

- From your library of music files you can create unique playlists for playback. Create & save multiple playlists for music compilations that suit your variety of music.
- Sort listings by **Albums**, **Artists**, or **Genres**.

Create a Temporary Playlist

- Select the song(s) from the list you would like to listen to using the **Arrow Keys** and the **Check/Uncheck** button on the remote control, or the left mouse button.
- Click Play or press the **Play** button to begin listening.
- To select all the songs in the list, navigate to the Title box with the arrow keys and press OK on the remote control.

Set Playlists

- Select the songs from the list you would like to add to the playlist using the **Arrow Keys** and the **Check/Uncheck** button on the remote control, or the left mouse button.
- Select **Add to Playlist** to add songs to the playlist.
- Select **Go to Playlist** to view, play, save or clear the newly created playlist.

Play CD/Other Media

- With an audio CD in the CD drive Home Theater will auto scan for music files to be displayed on screen, together with other music files from the Media Library.
- To only play music on the CD, select **Other Media** and select **Play**.



Radio

(Radio is not available in all versions)

The first time the radio feature is launched it will perform an autoscan to find all available radio stations. The available stations are listed in My Station list.

Listen to Radio

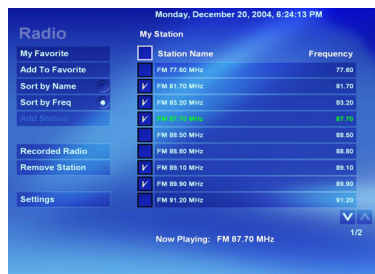
- From the My Station list, select the station to listen to.

Set Favorite Station

- Check favorite stations from the My Station list.
- Press **Add To favorite**.
- Press **My Favorite** to view your favorite radio station list.

Record Radio

- Press **Record** on the control panel or the corresponding key on the remote control.
- To listen to the recorded radio, select **Recorded Radio**.



Remote Control Features



	Function
	Power off -- application or system
	Launch television (TV)
	Print Picture
	Close current application
	Launch music
	Launch pictures
	Launch video clips
	Launch DVD / VCD or menus
	Arrow keys and OK
	Back step
	Switch to full screen view
	Go to previous Chapter
	select / check / uncheck
	Play or pause
	Go to next chapter
	Fast rewind
	Stop
	Fast forward
	Volume up and down
	Home Theater / Home Page
	Channel up and down
	Mute audio
	Record
	Recall: go back to the latest channel you watched
	Number keys 0-9
	Shuffle playing sequence
	Repeat video loop

Note: 1. Press Home Theater button to launch InterVideo Home Theater.
 2. The print button may not be available for all remote control model.

Keyboard Shortcuts

Function	Key Mapping
Back	Backspace
Clear	ESC
Down	Down arrow
Up	Up arrow
Right	Right arrow
Left	Left arrow
Mute	F8
My Music	Ctrl+Shift+Alt+4
My Pictures	Ctrl+Shift+Alt+2
My DVD / DVD Menu	Ctrl+Alt+M
My TV	Ctrl+Shift+Alt+2
Number keys	0 to 9
OK	Enter / Spacebar
Pause	Ctrl+P
Play	Ctrl+Shift+P
Record TV / Radio	Ctrl+R
Replay	Ctrl+B
Forward	Ctrl+Shift+Alt+3
Skip	Ctrl+F
Stop	Ctrl+S
Enter	Enter
Volume Up	F9
Volume Down	F10

Note: If a shortcut key functionality requires combination of keys, such as Ctrl+Shift+Alt+4, please hold down Ctrl, Shift, and Alt key then press 4.

Free Manuals Download Website

<http://myh66.com>

<http://usermanuals.us>

<http://www.somanuals.com>

<http://www.4manuals.cc>

<http://www.manual-lib.com>

<http://www.404manual.com>

<http://www.luxmanual.com>

<http://aubethermostatmanual.com>

Golf course search by state

<http://golfingnear.com>

Email search by domain

<http://emailbydomain.com>

Auto manuals search

<http://auto.somanuals.com>

TV manuals search

<http://tv.somanuals.com>